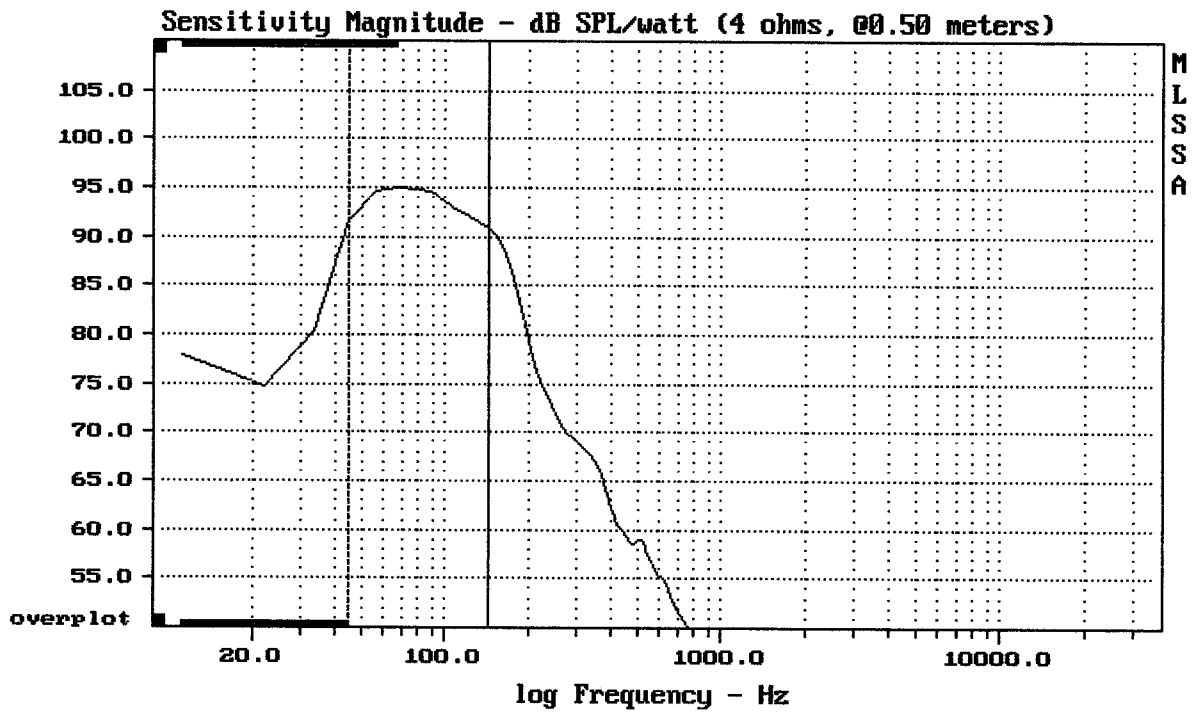


E-shop:

<http://eshop.prodance.cz/artist-sub-white/d-97378/>

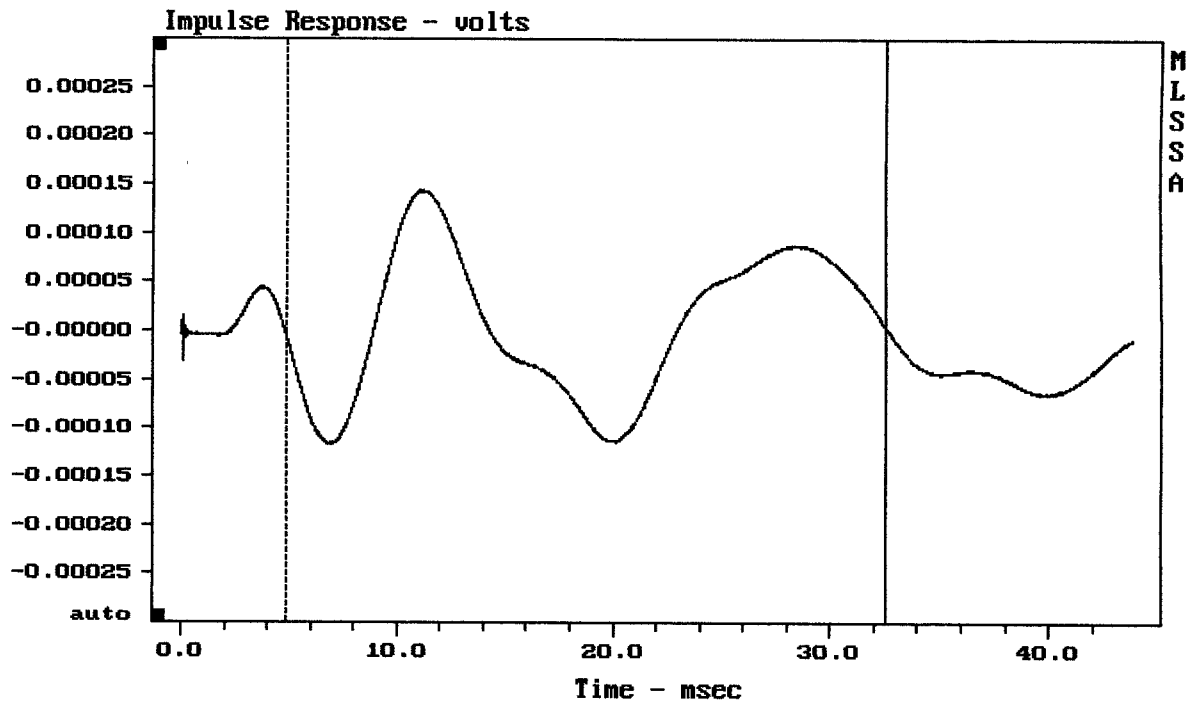
<http://eshop.prodance.cz/artist-sub-black/d-95864/>



mean: 93.30, rms: 93.42, std: 1.35, max: 94.96, min: 90.91

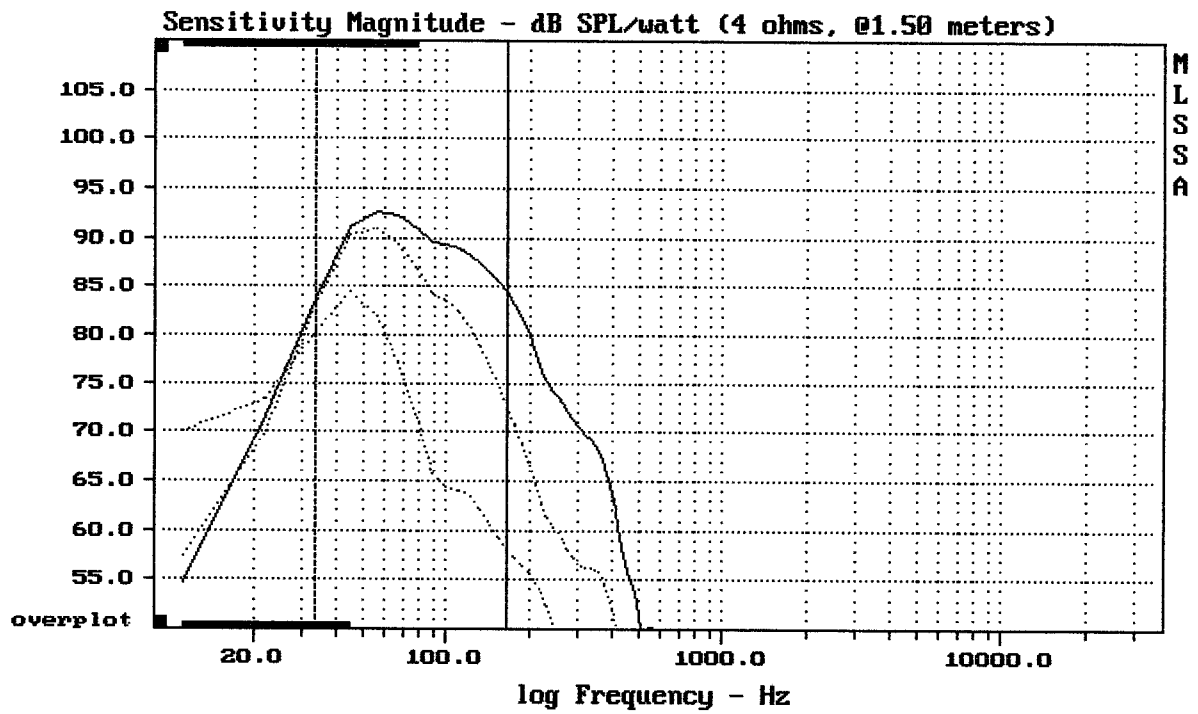
ADAM AUDIO ARTIST SUB7

MLSSA: Frequency Domain



mean: 6.758e-006, rms: 7.507e-005, std: 7.477e-005, max: 0.0001434, min: -0.00

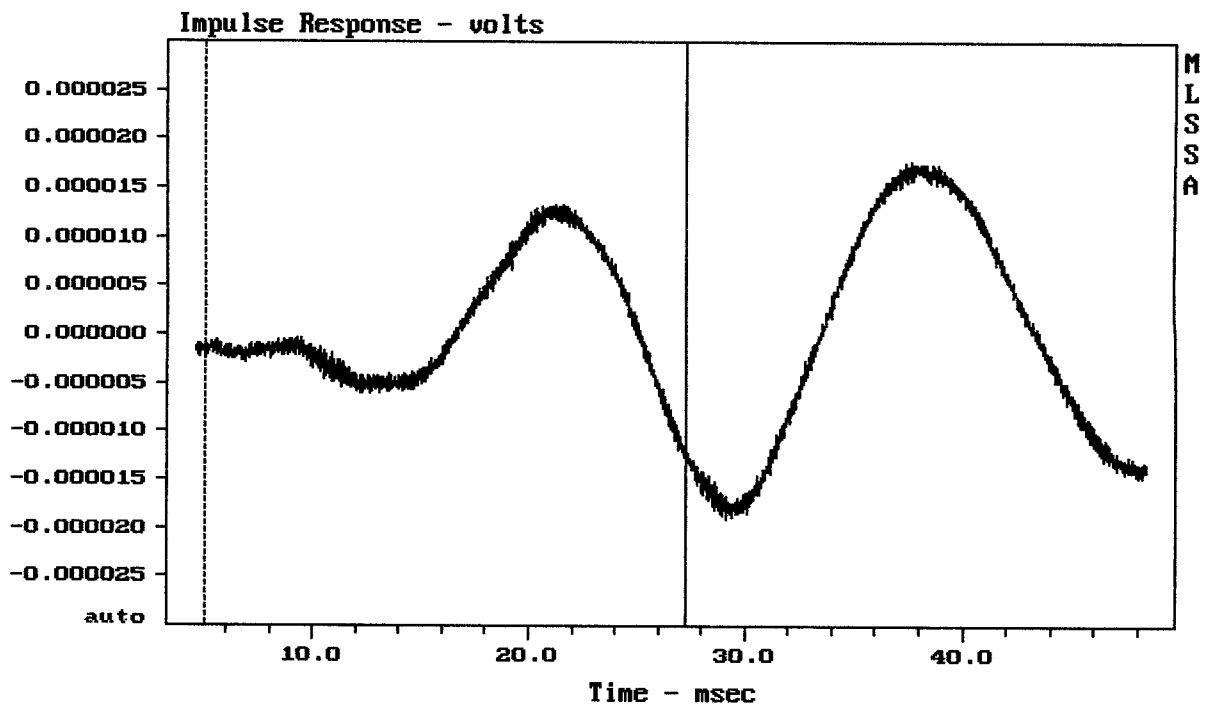
ADAM AUDIO ARTIST SUB7



Temporal averaging completed after 3 measurements

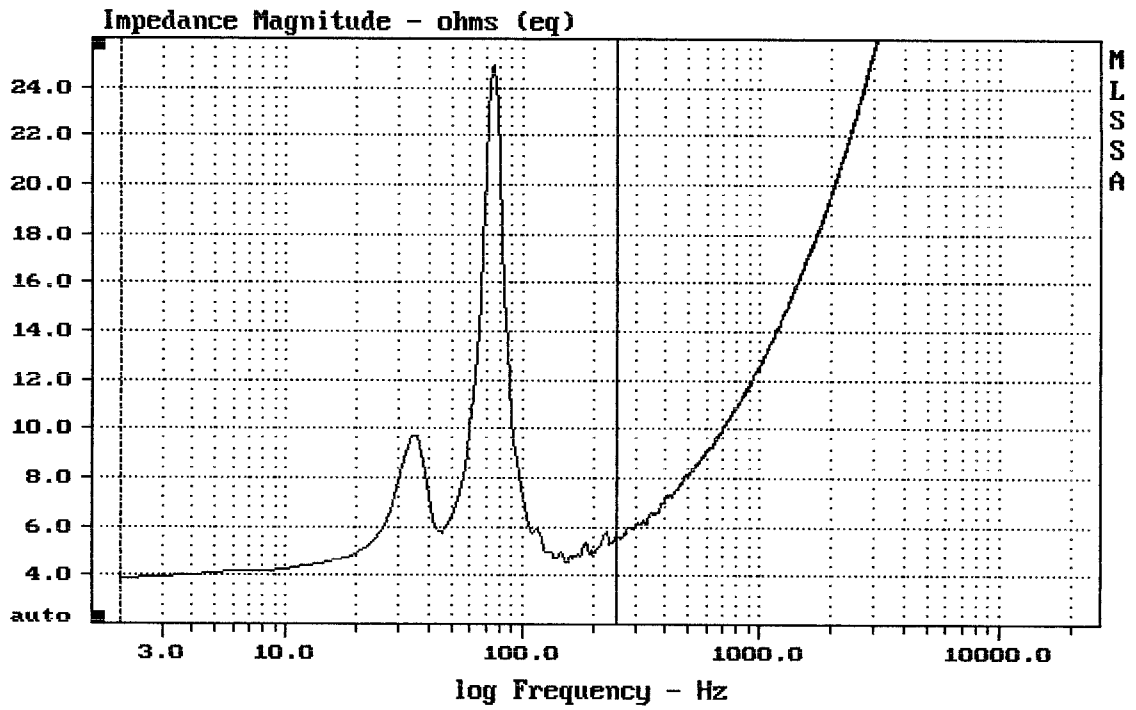
ADAM AUDIO ARTIST SUB7

MLSSA: Frequency Domain



mean: 7.372e-007, rms: 6.336e-006, std: 6.293e-006, max: 1.334e-005, min: -1.2

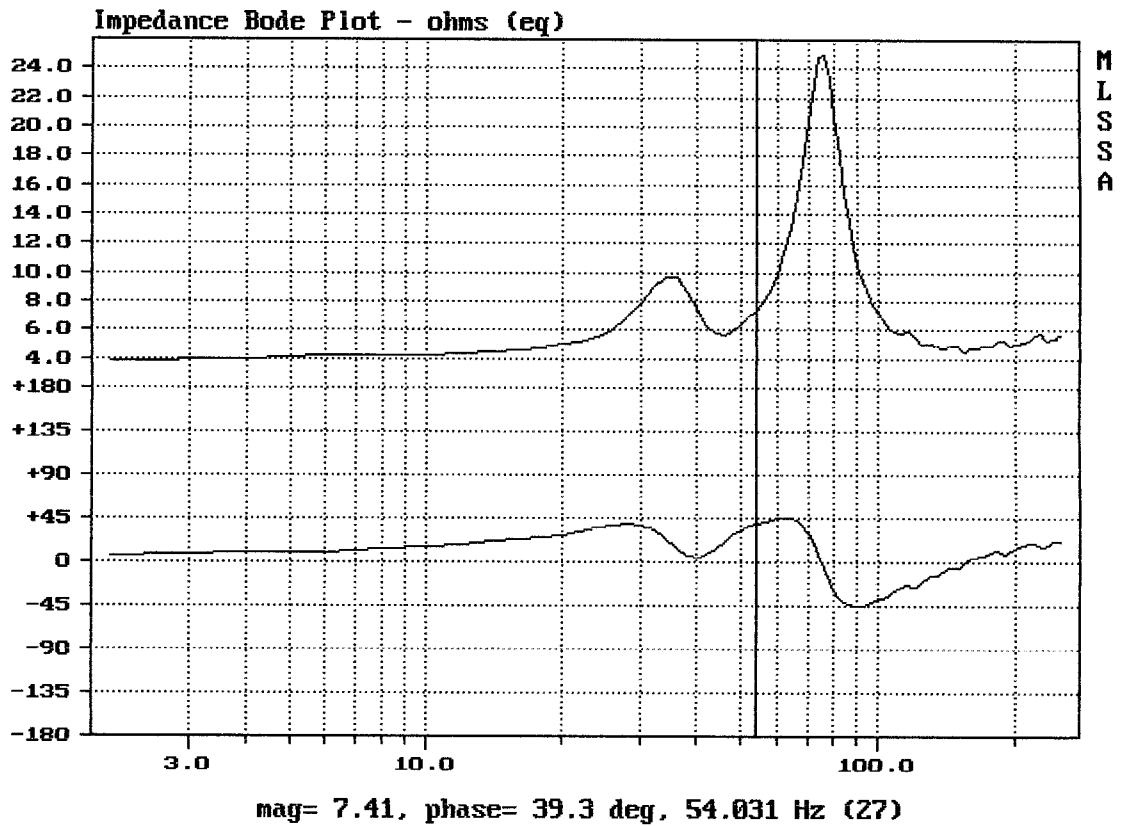
ADAM AUDIO ARTIST SUB7

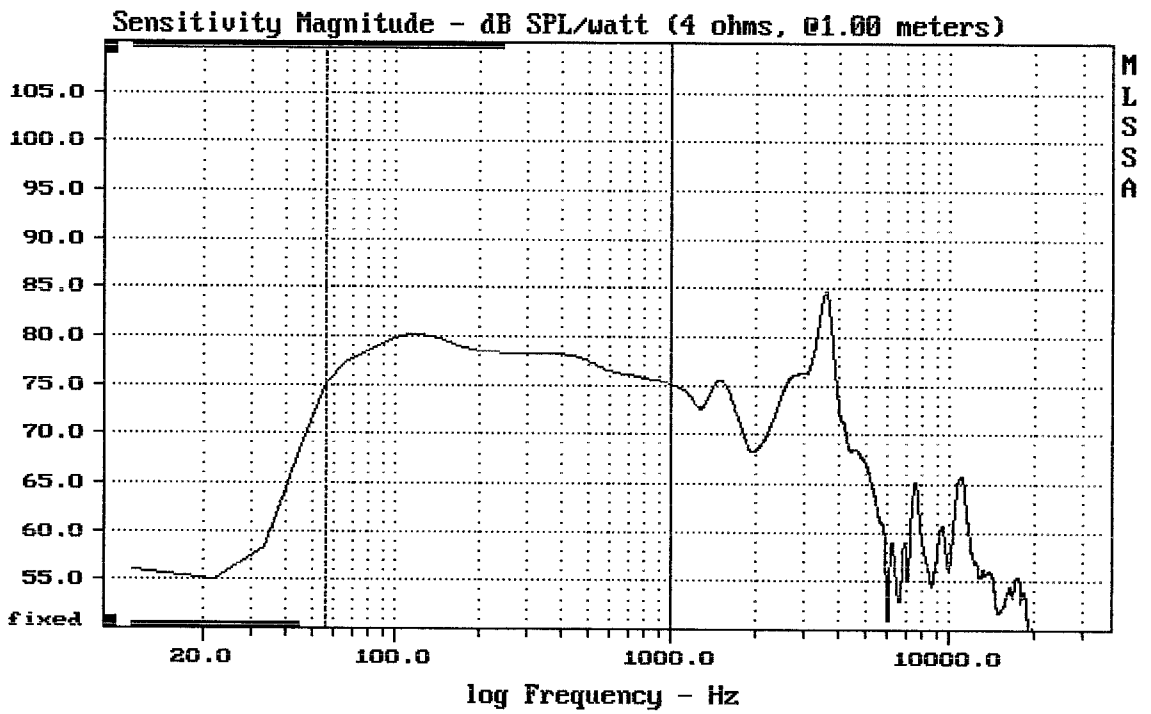


mean: 7.098, rms: 8.35, std: 4.397, max: 24.91, min: 3.862

SUB7

MLSSA: Frequency Domain

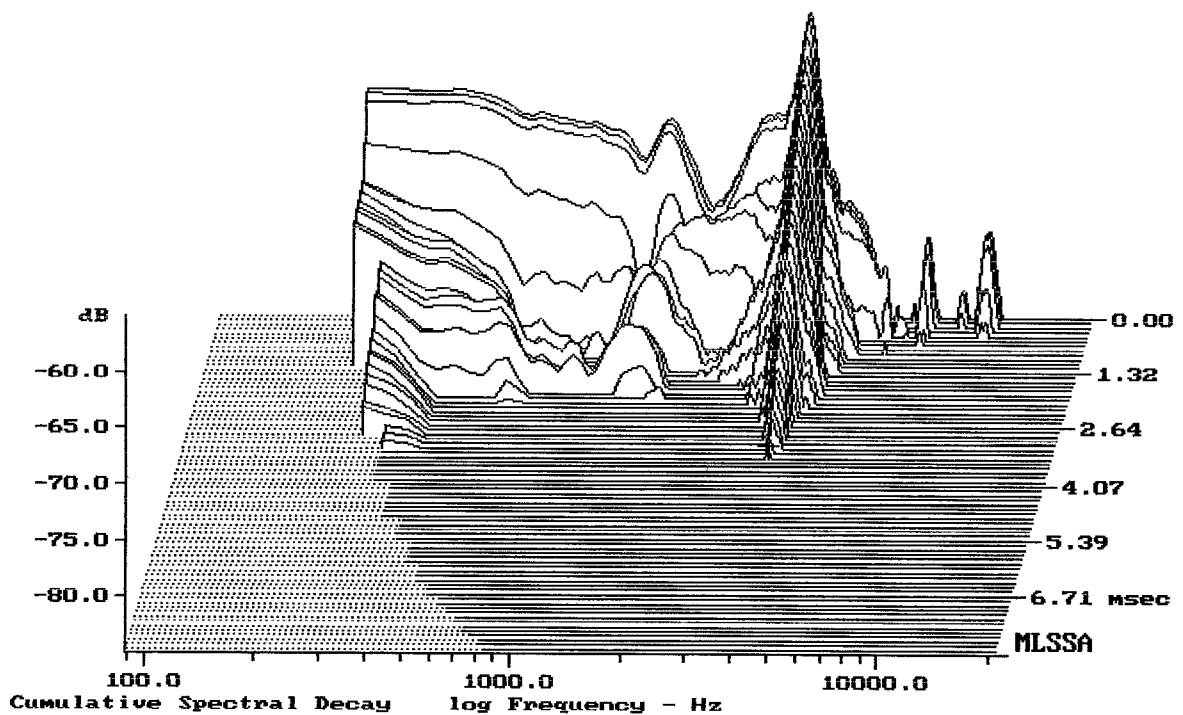




Level (55:999 Hz) = 78.10 dB SPL/watt (4 ohms, @1.00 meters)

7" FROM SUB7

MLSSA: Frequency Domain



-84.32 dB, 3551 Hz (80), 3.300 msec (31)

Line	Parameter	Value	Units
1	RMSE-free	0.33	Ohms
2	Fs	62.64	Hz
3	Re	3.66	Ohms[dc]
4	Res	30.66	Ohms
5	Qms	5.78	
6	Qes	0.69	
7	Qts	0.62	
8	L1	1.10	mH
9	L2	1.36	mH
10	R2	6.13	Ohms
11	RMSE-load	0.38	Ohms
12	Vas(Sd)	4.51	liters
13	Mms	30.28	grams
14	Cms	213	$\mu\text{M}/\text{Newton}$
15	B1	7.95	Tesla-M
16	SPLref(Sd)	83.9	dB[Re]
17	Rub-index	0.01	

Method: Mass-loaded (30.00 grams)

Area (Sd): 122.72 sq cm

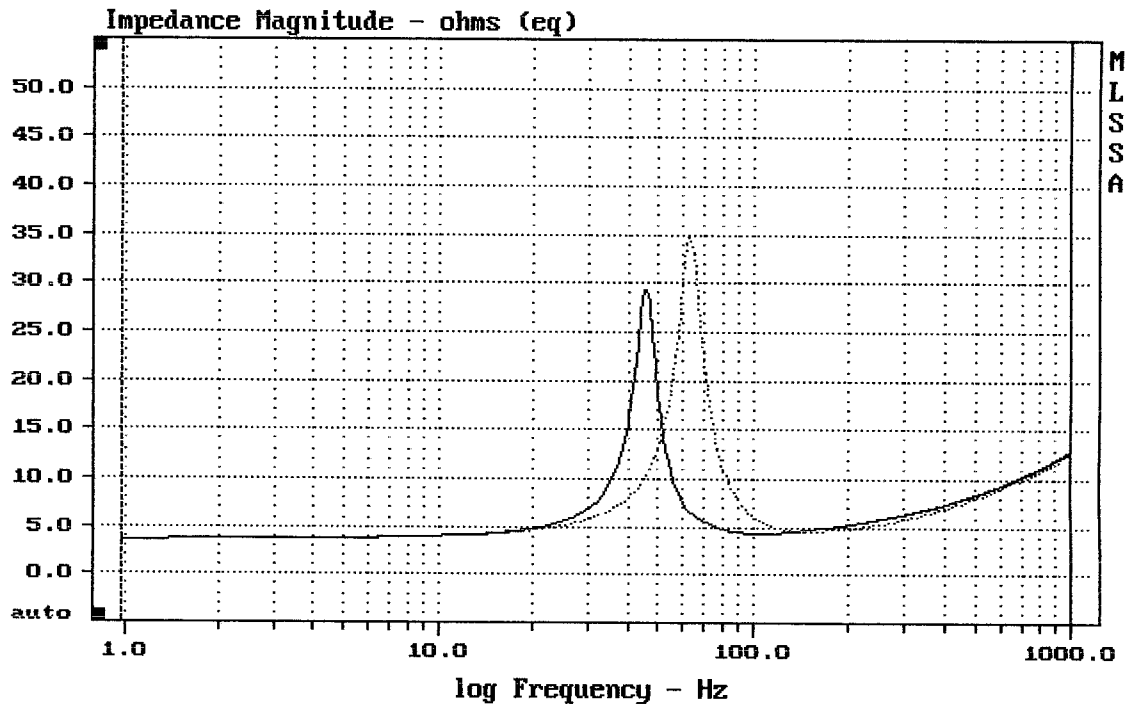
DCR mode: Measure (-0.08 ohms)

QC file: CLOSED

Analysis successful. Shift in Fs = -27.7% (-20% to -50% is recommended).

7" FROM SUB7

MLSSA: Parameters



mean: 8.71, rms: 9.431, std: 3.617, max: 34.88, min: 3.665

MLSSA: Frequency Domain