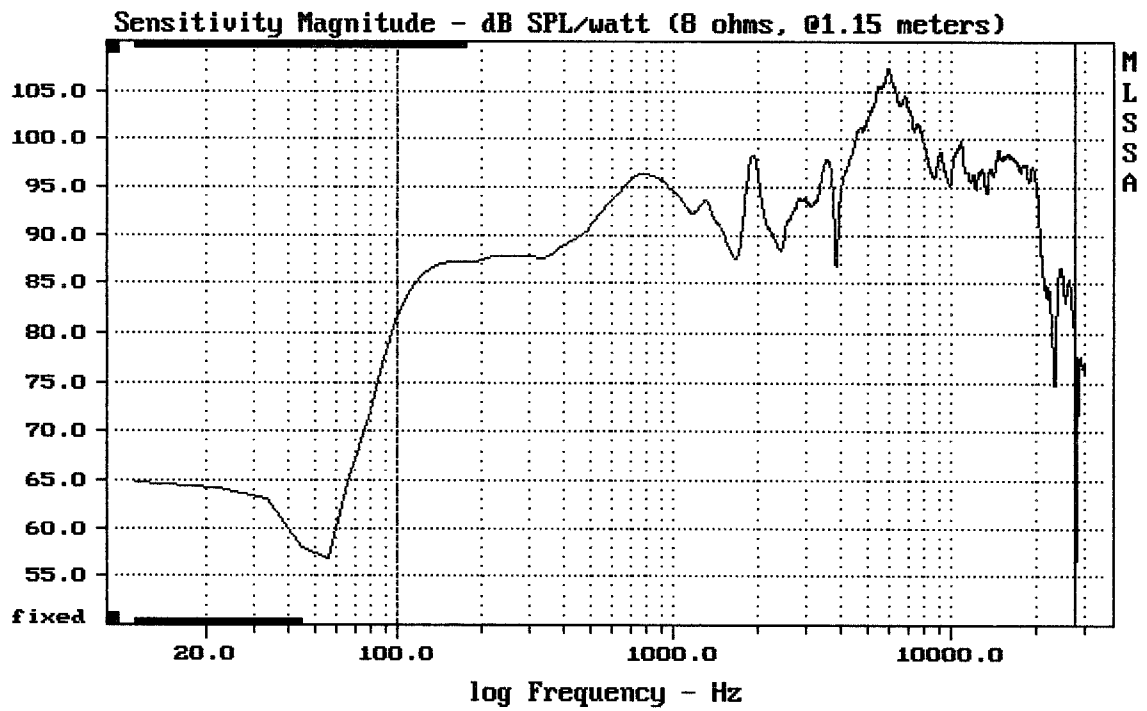


E-shop:

<http://eshop.prodance.cz/mq-80pb/d-90520/>

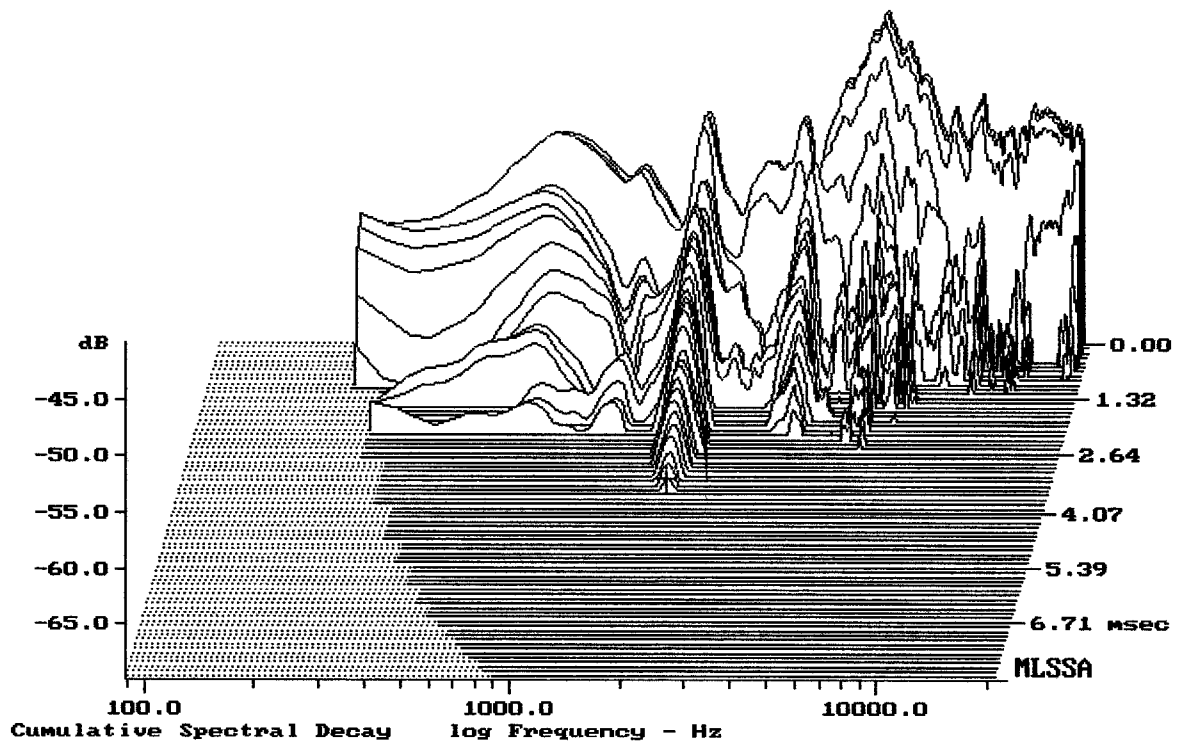
<http://eshop.prodance.cz/mq-80pw/d-89216/>



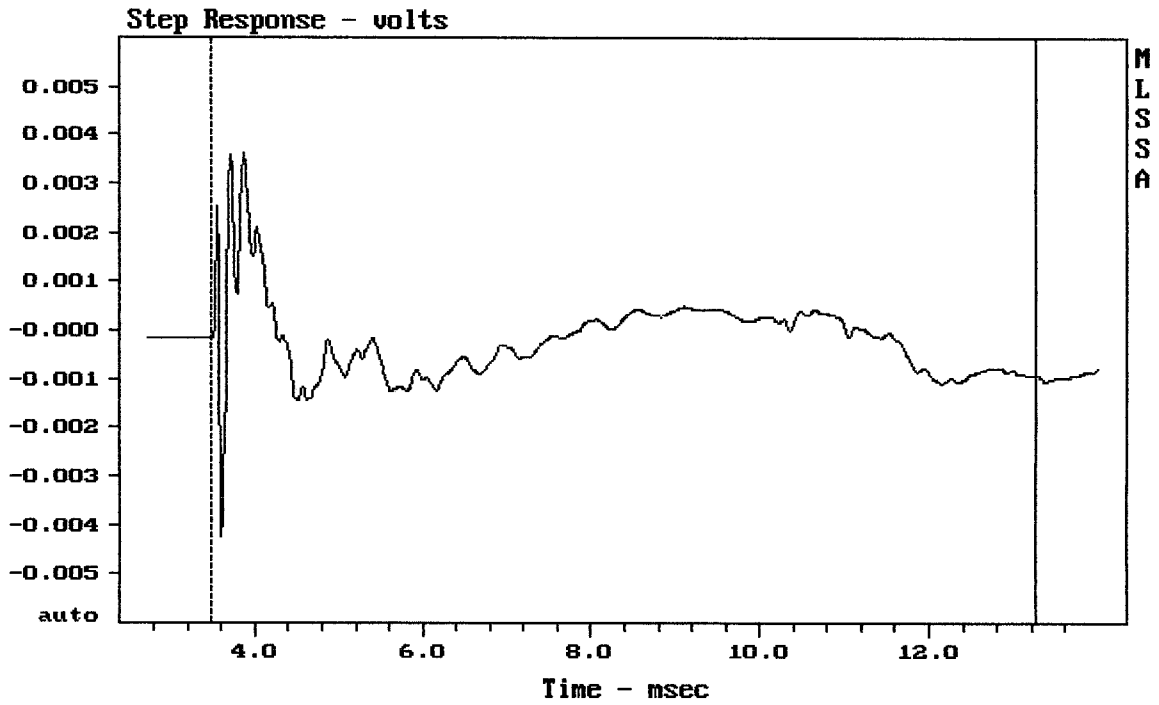
Level (100:27499 Hz) = 96.56 dB SPL/watt (8 ohms, @1.15 meters)

RCF MQ80P

MLSSA: Frequency Domain



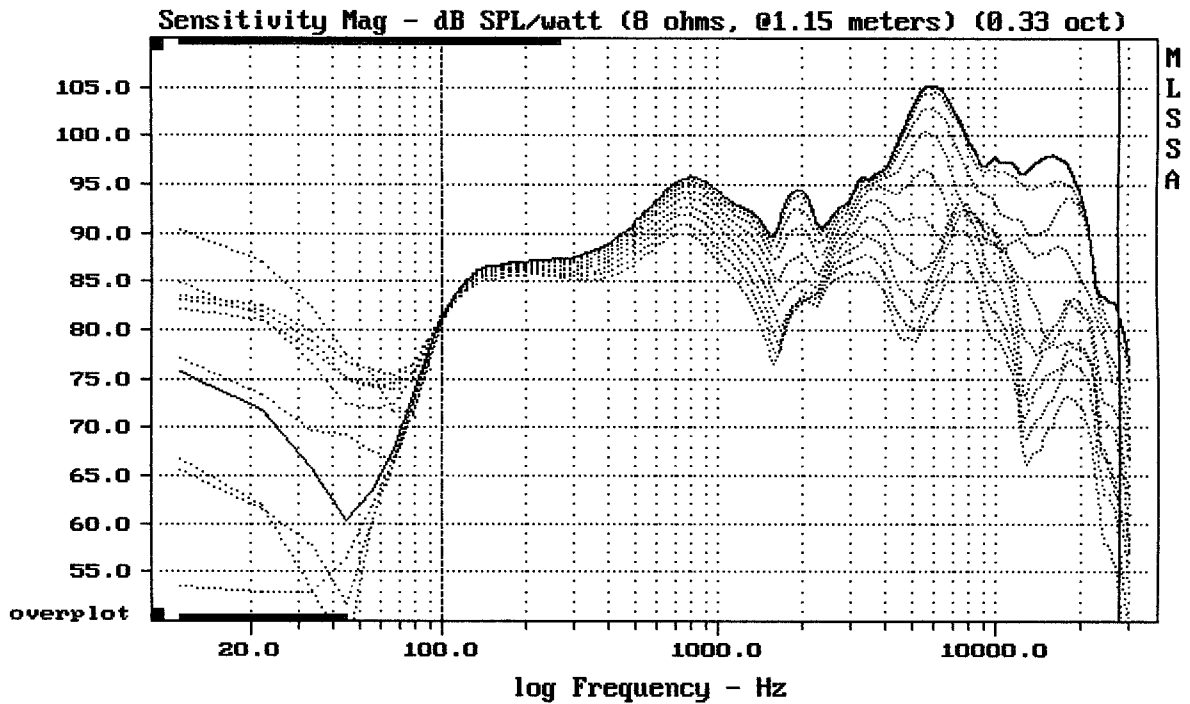
-69.00 dB, 1909 Hz (43), 3.520 msec (33)



mean: -0.0002073, rms: 0.0008487, std: 0.000823, max: 0.003604, min: -0.004249

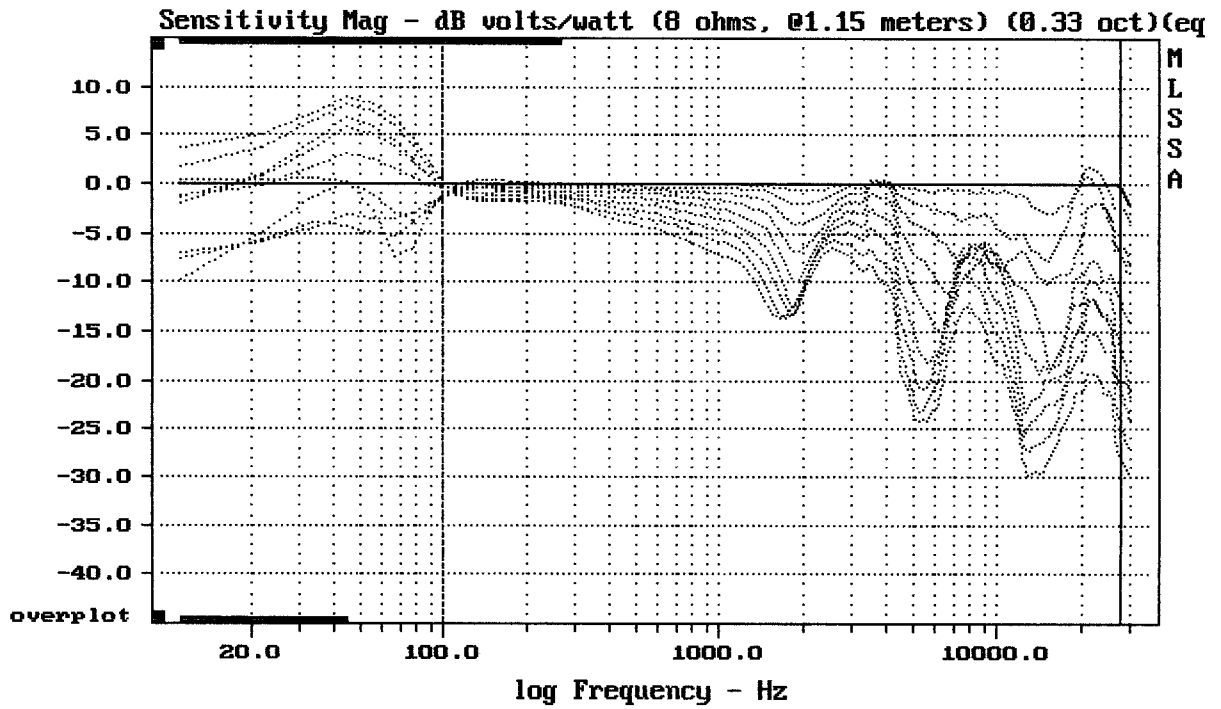
RCF MQ80P

MLSSA: Time Domain



Overlay Compare: dev= +21/-9.2, std= 6.7, avg= -21

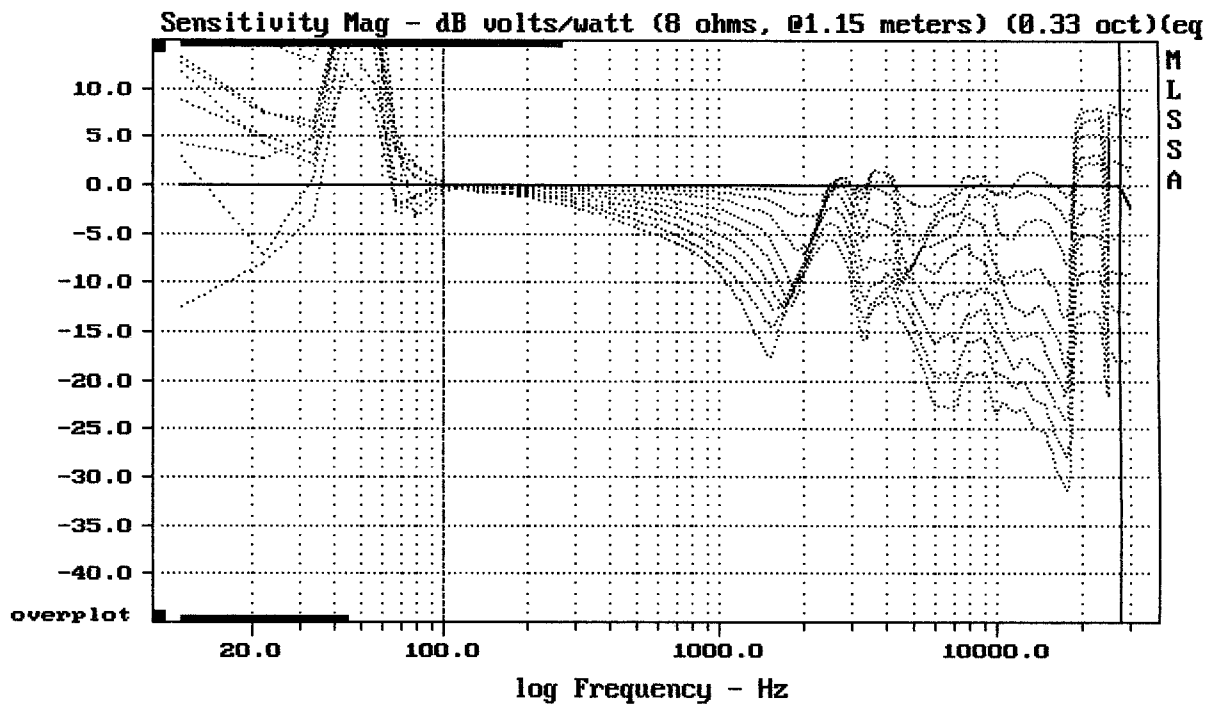
RCF MQ80P



Overlay Compare: dev= +20/-9.8, std= 6.6, avg= -20

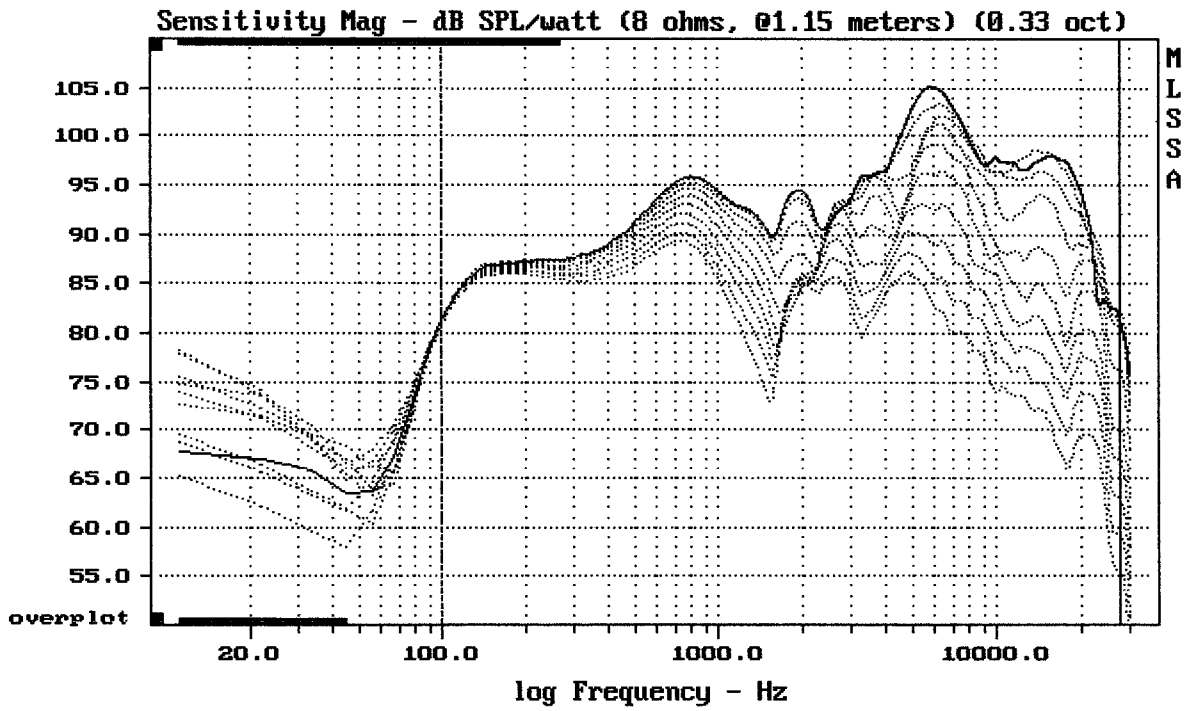
RCF MQ80P

MLSSA: Frequency Domain



Overlay Compare: dev= +19/-13, std= 6.5, avg= -19

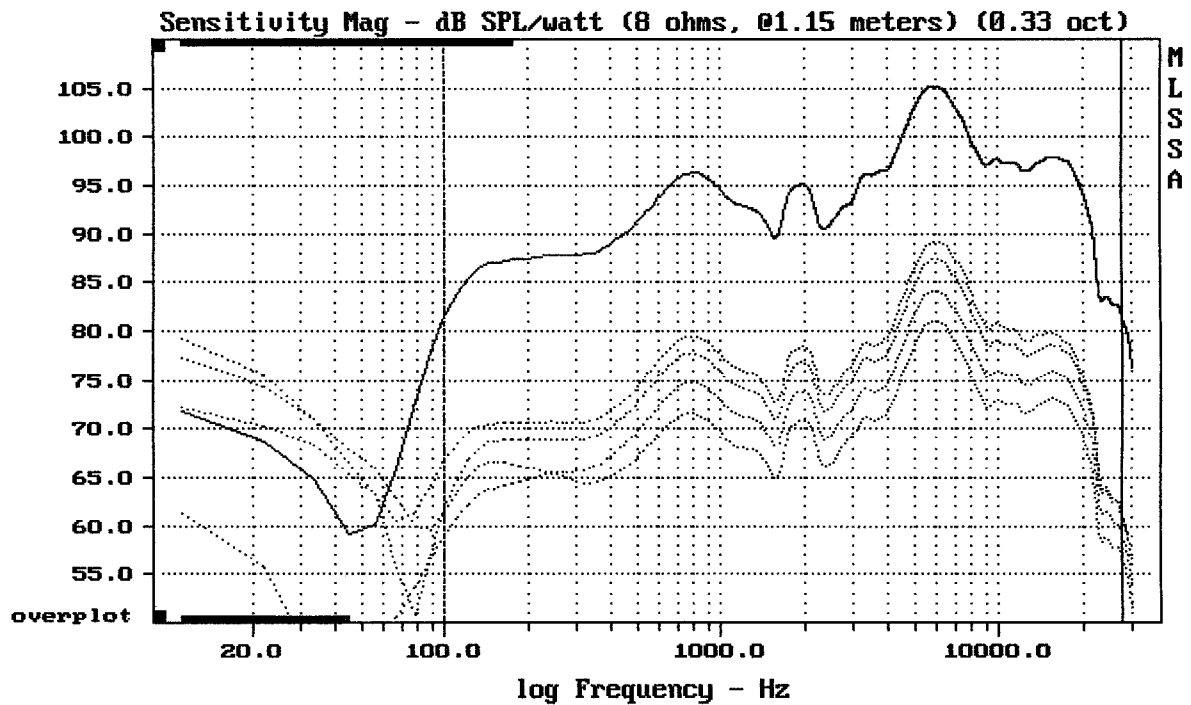
RCF MQ80P



Overlay Compare: dev= +21/-10, std= 6.3, avg= -21

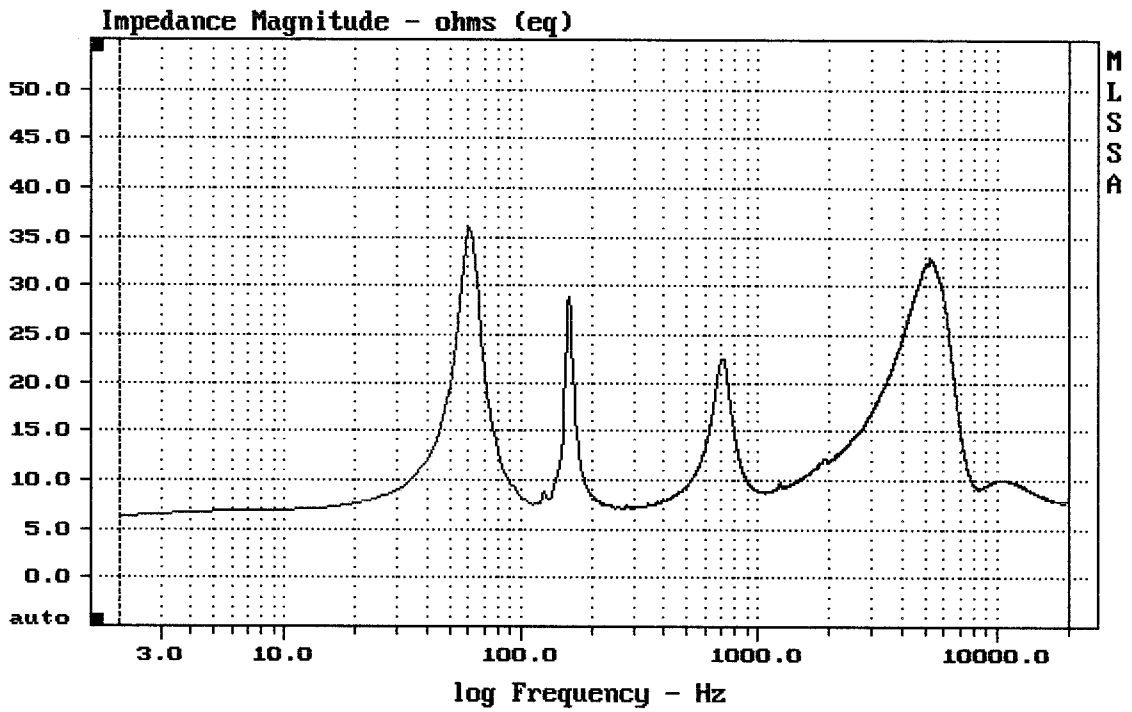
RCF MQ80P

MLSSA: Frequency Domain



Overlay Compare: dev= +4.6/-0.65, std= 0.46, avg= -25

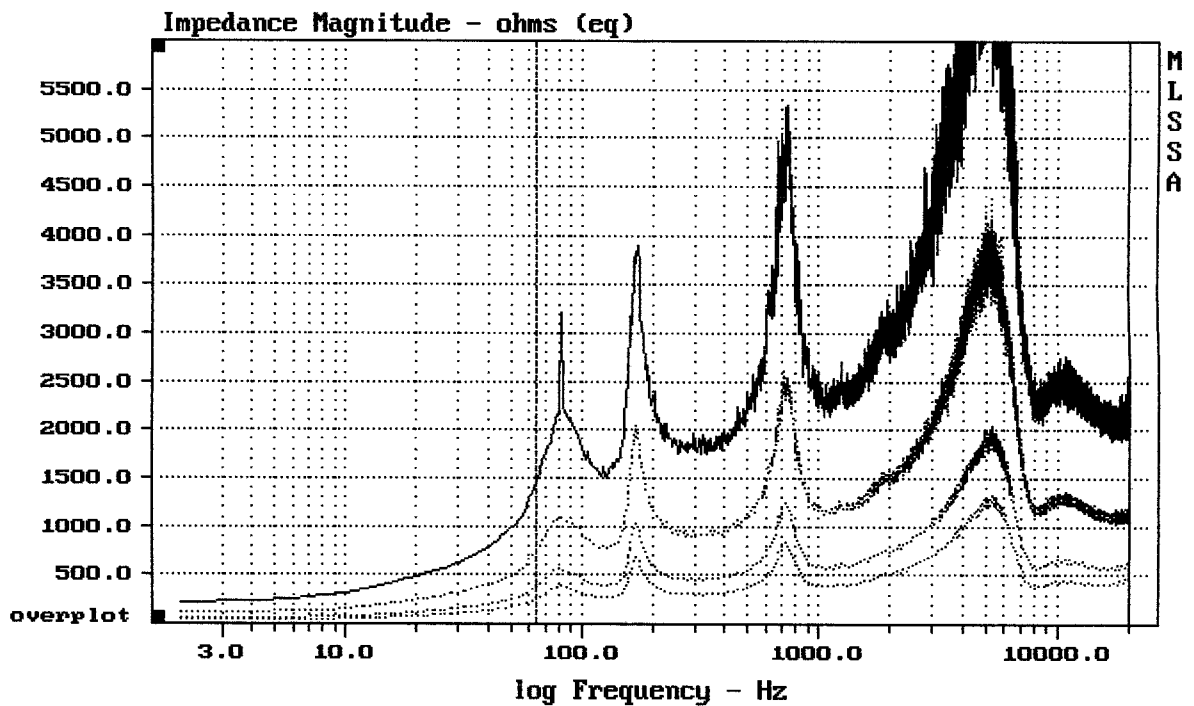
RCF MQ80P



mean: 12.84, rms: 14.68, std: 7.114, max: 36.15, min: 6.256

RCF MQ80P

MLSSA: Frequency Domain



mean: 552.6, rms: 607.7, std: 252.7, max: 1322, min: 257

RCF MQ80P