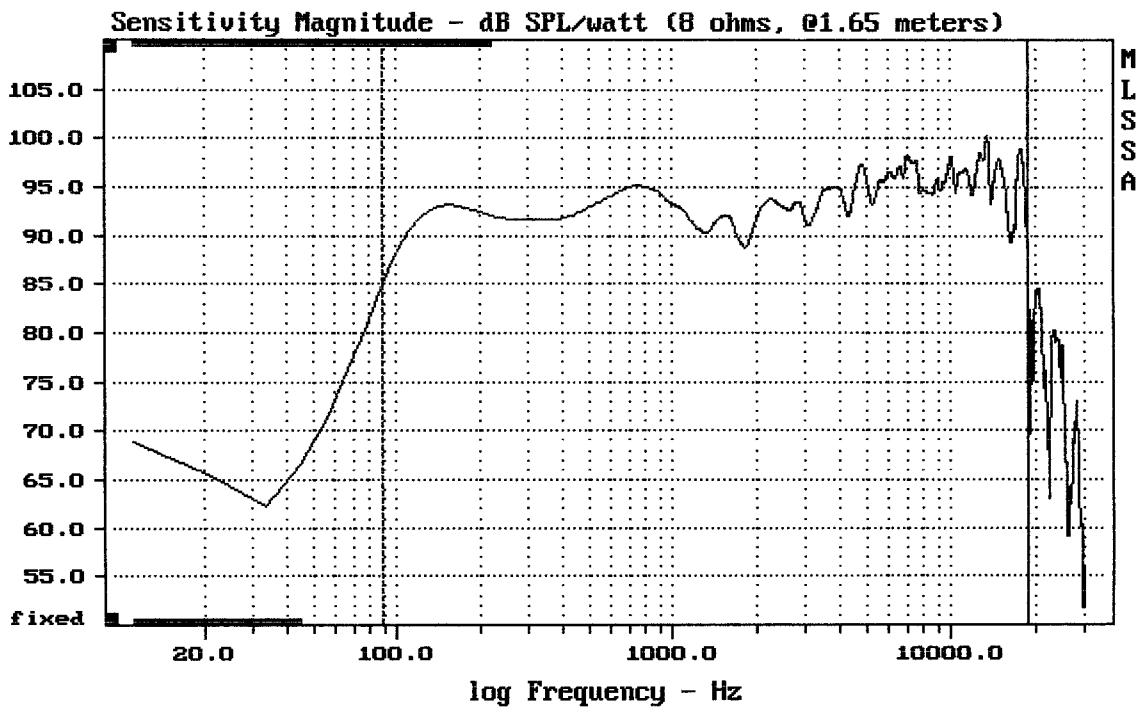


E-shop:

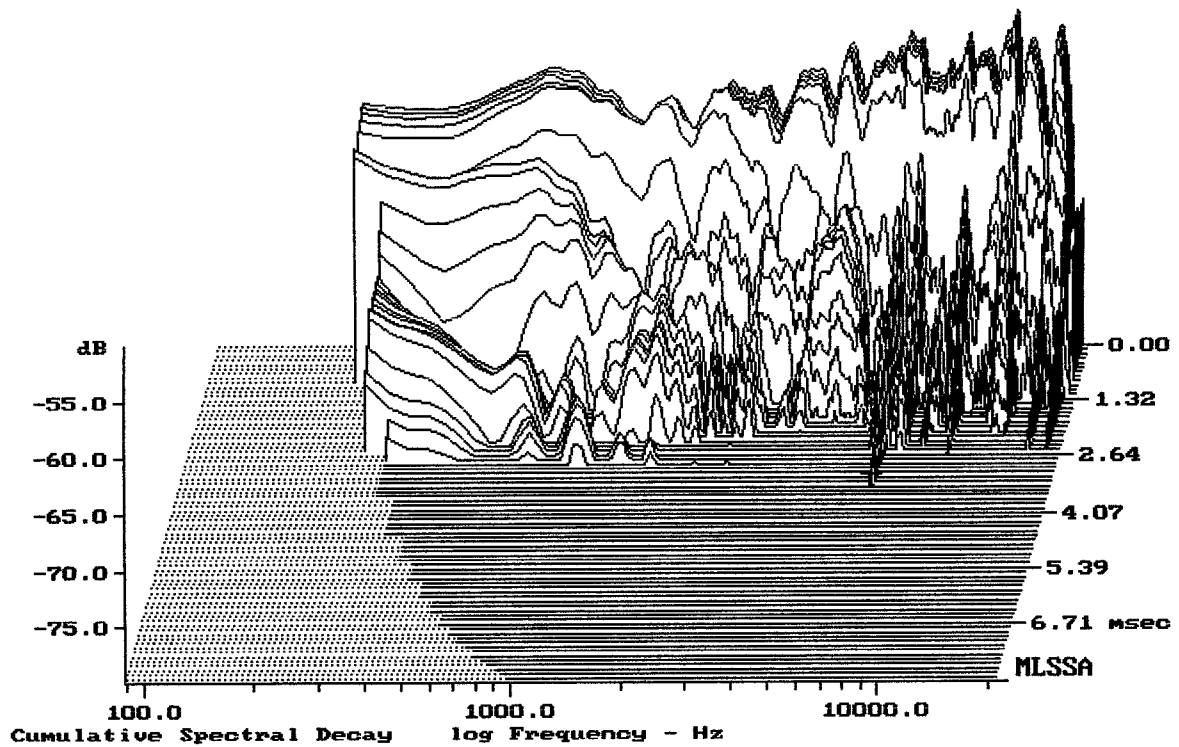
<http://eshop.prodance.cz/vfm109/d-97625/>



Level (89:18810 Hz) = 93.89 dB SPL/watt (8 ohms, @1.65 meters)

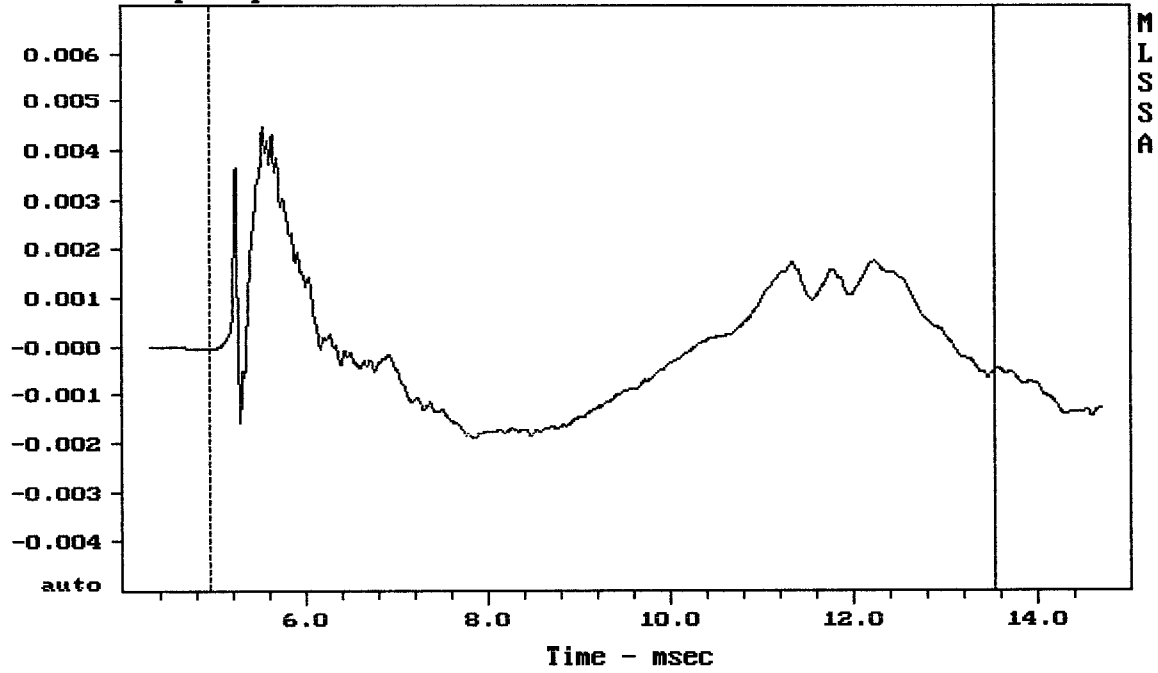
EAW UFM109

MLSSA: Frequency Domain



-78.88 dB, 6836 Hz (154), 3.410 msec (32)

Step Response - volts

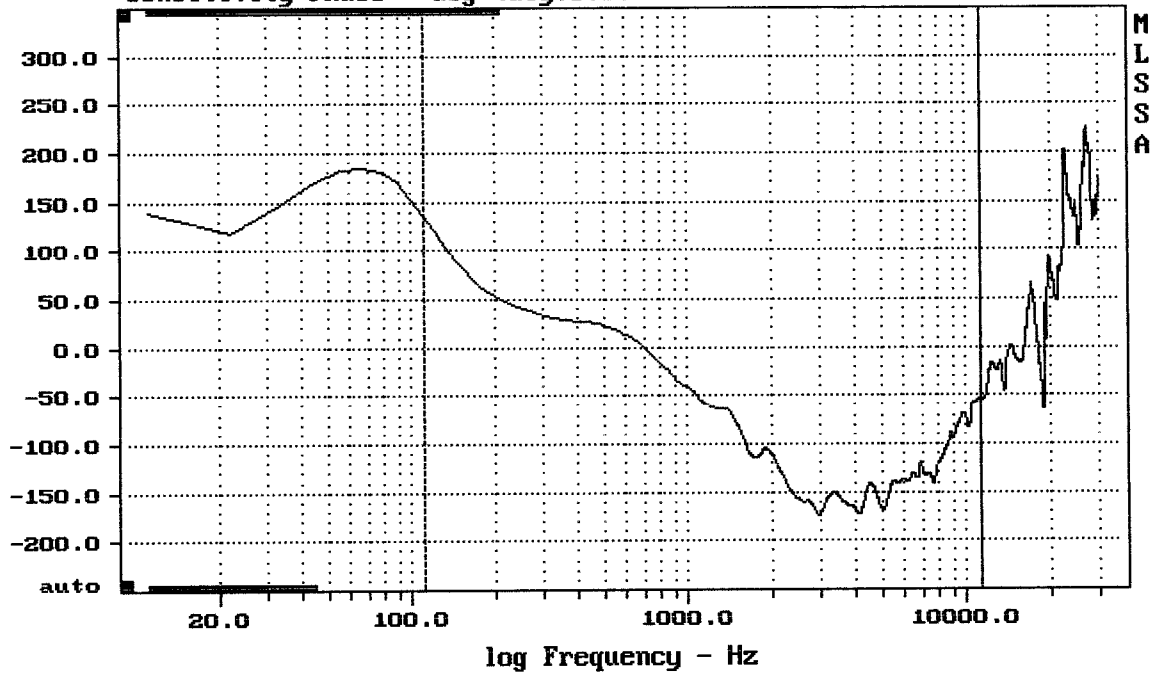


mean: 4.339e-005, rms: 0.001366, std: 0.001365, max: 0.004485, min: -0.001892

EAW UFM109

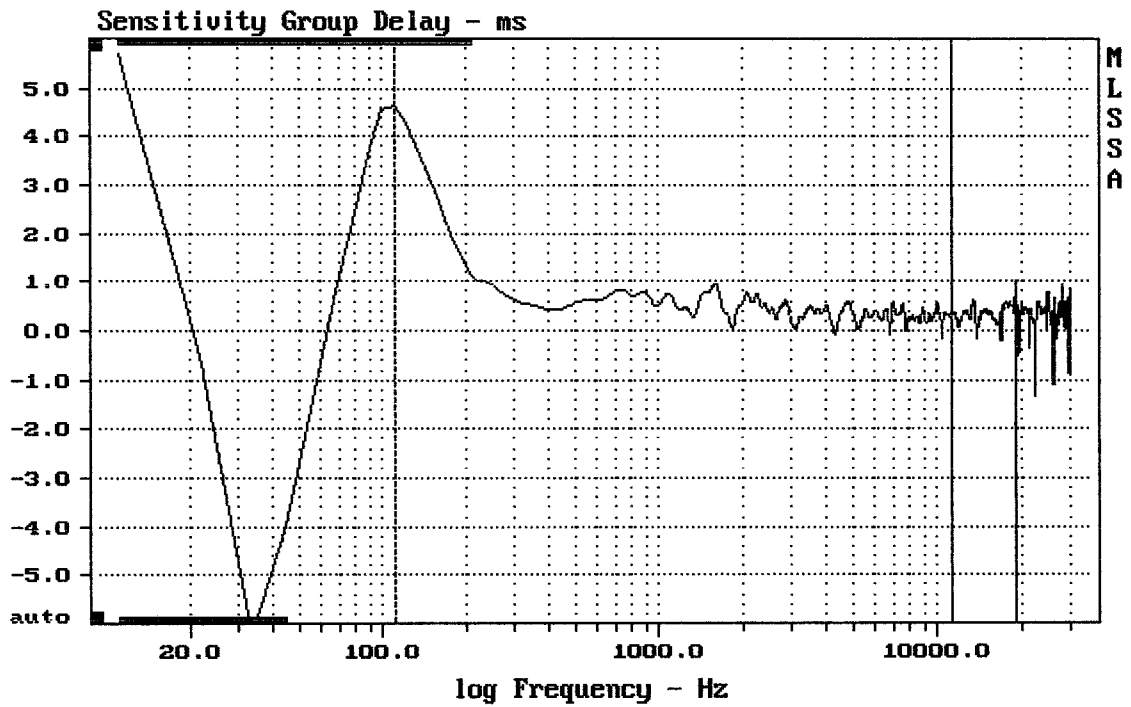
MLSSA: Time Domain

Sensitivity Phase - deg (dly:0.34 ms)



mean: -107.9, rms: 119.7, std: 51.63, max: 136.1, min: -173.8

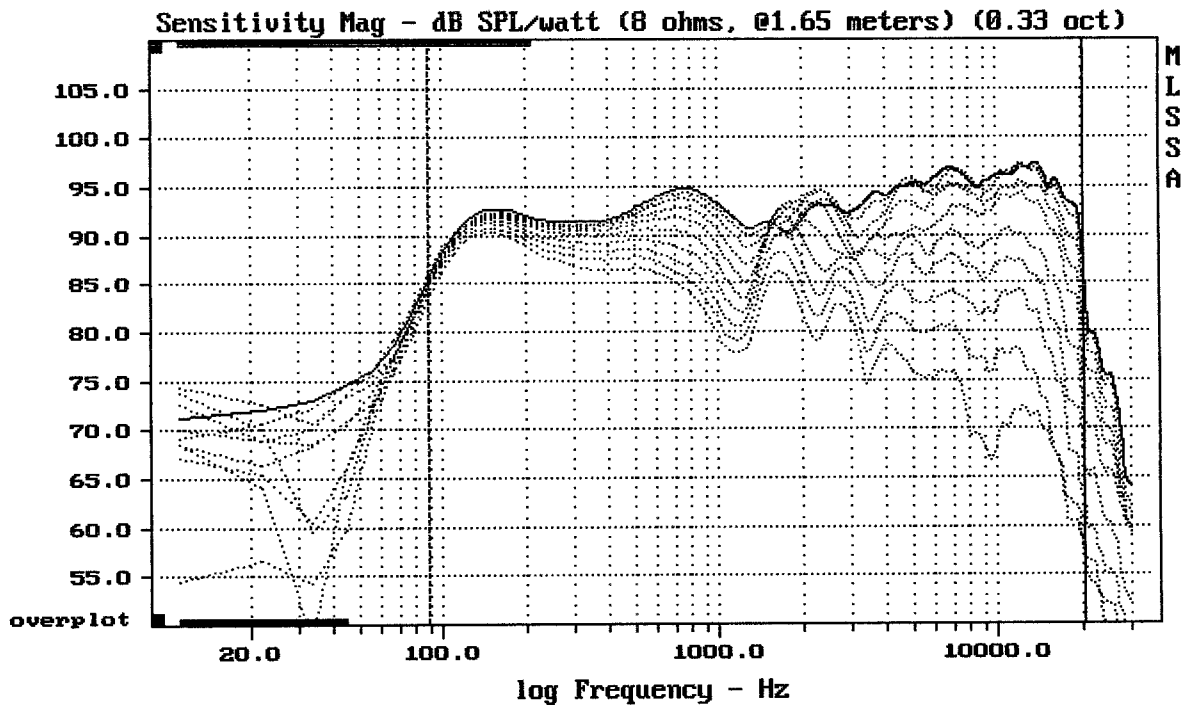
EAW UFM109



mean: 0.3875, rms: 0.5048, std: 0.3234, max: 4.638, min: -0.1551

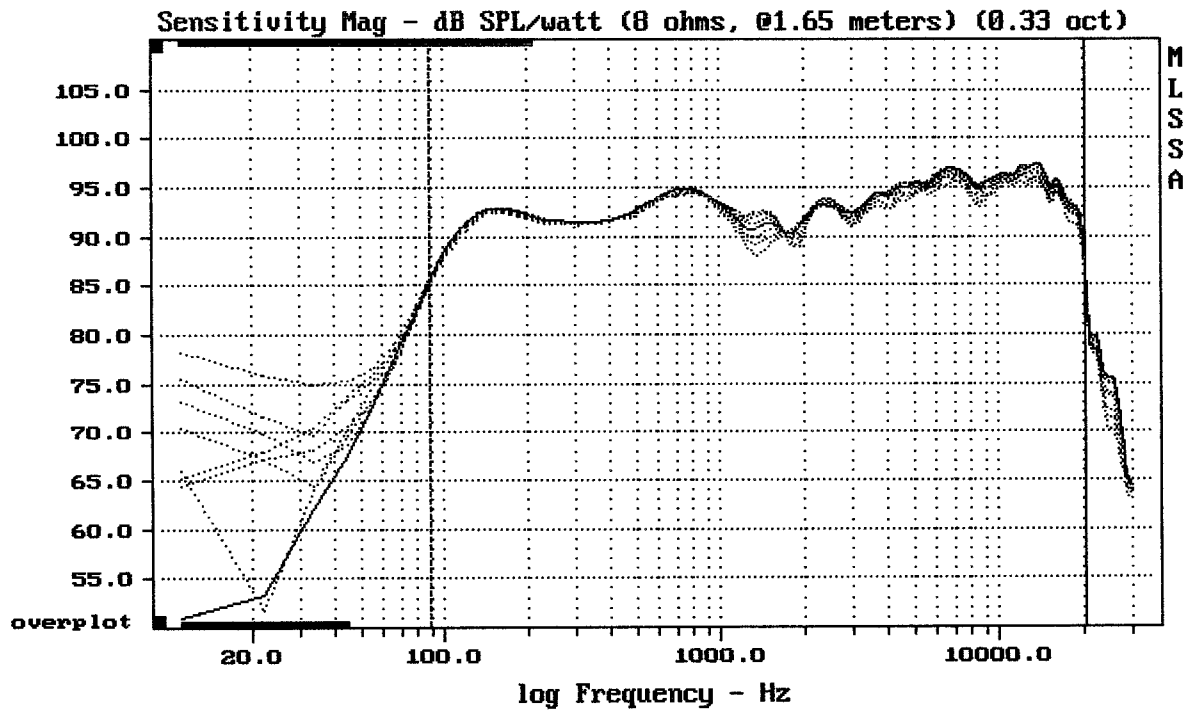
EAW VFM109

MLSSA: Frequency Domain



Overlay Compare: dev= +21/-8.6, std= 7, avg= -23

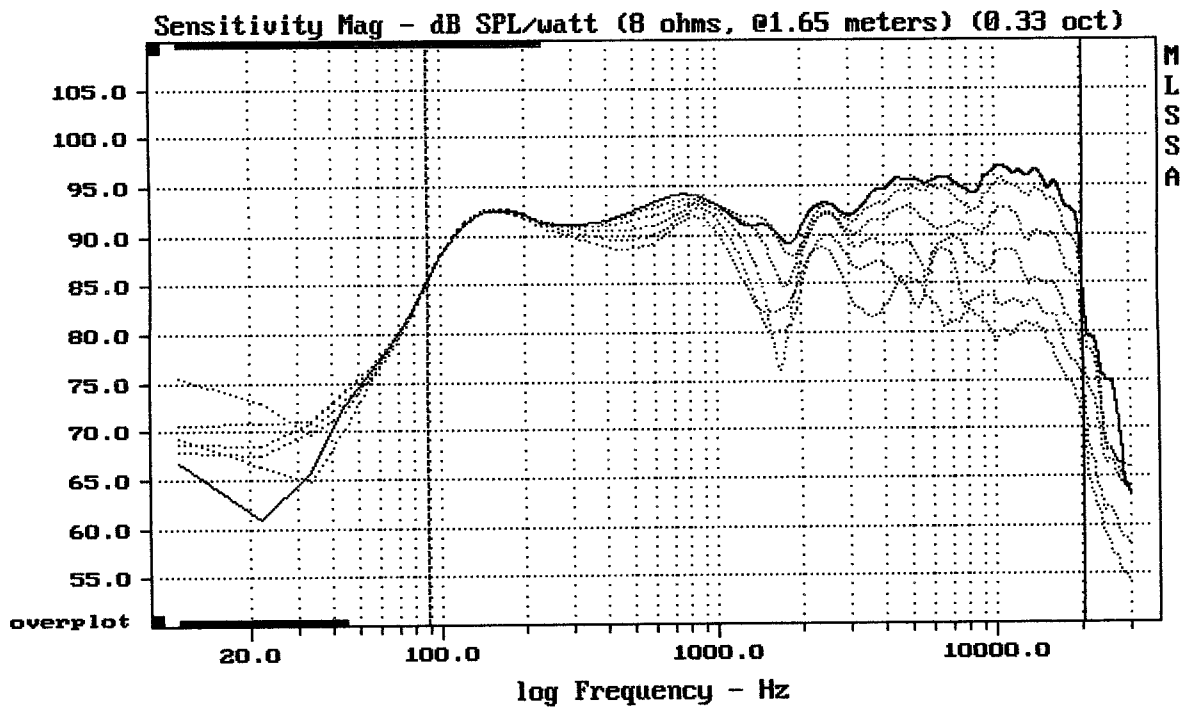
EAW VFM109



CURSOR: y = 84.3864 x = 20507.8119 (1848)

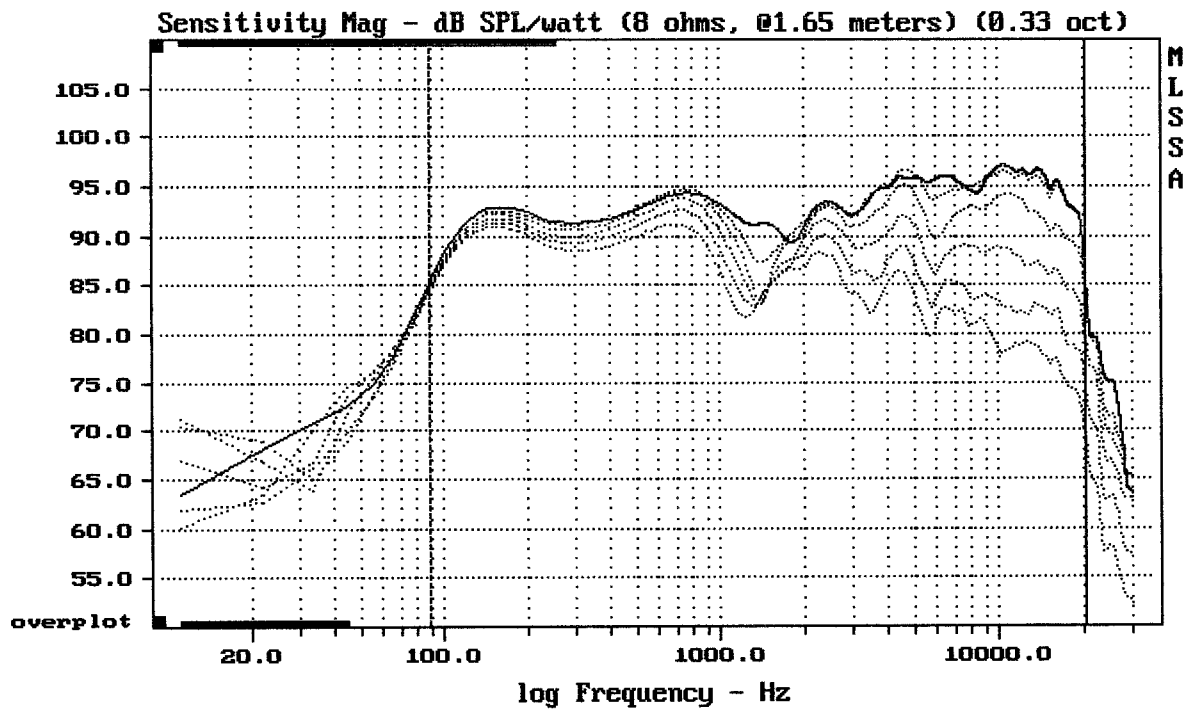
EAW VFM109

MLSSA: Frequency Domain



Overlay Compare: dev= +14/-5.1, std= 4.4, avg= -14

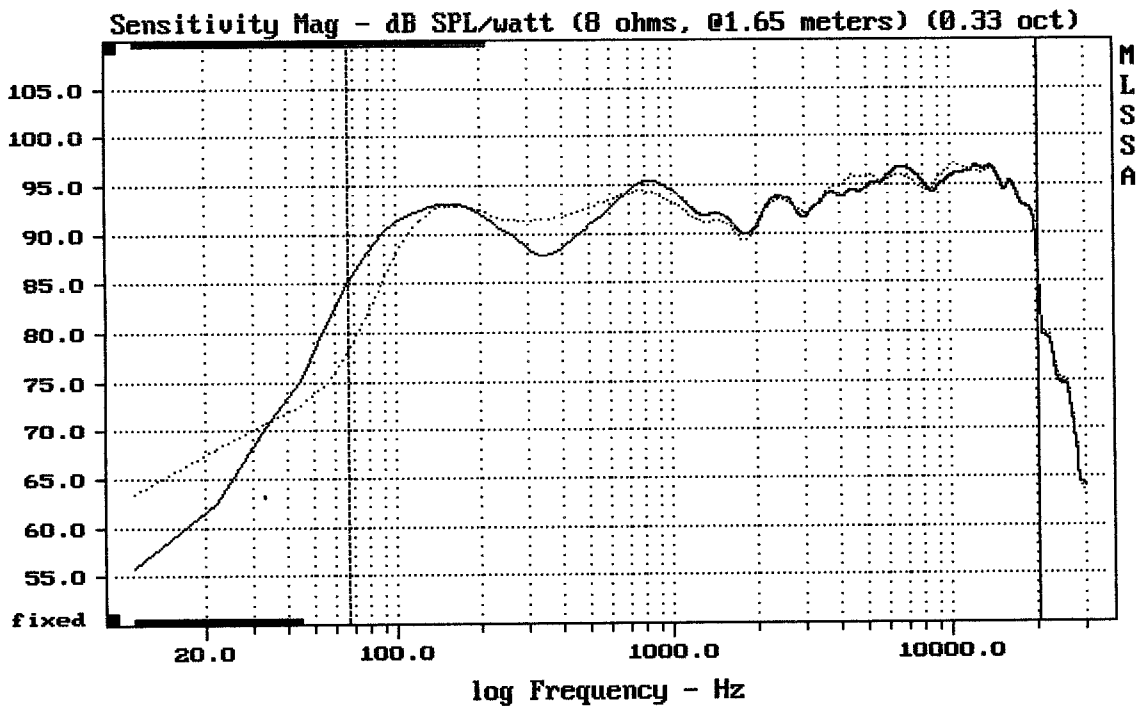
EAW VFM109



Overlay Compare: dev= +14/-4.8, std= 4.8, avg= -15

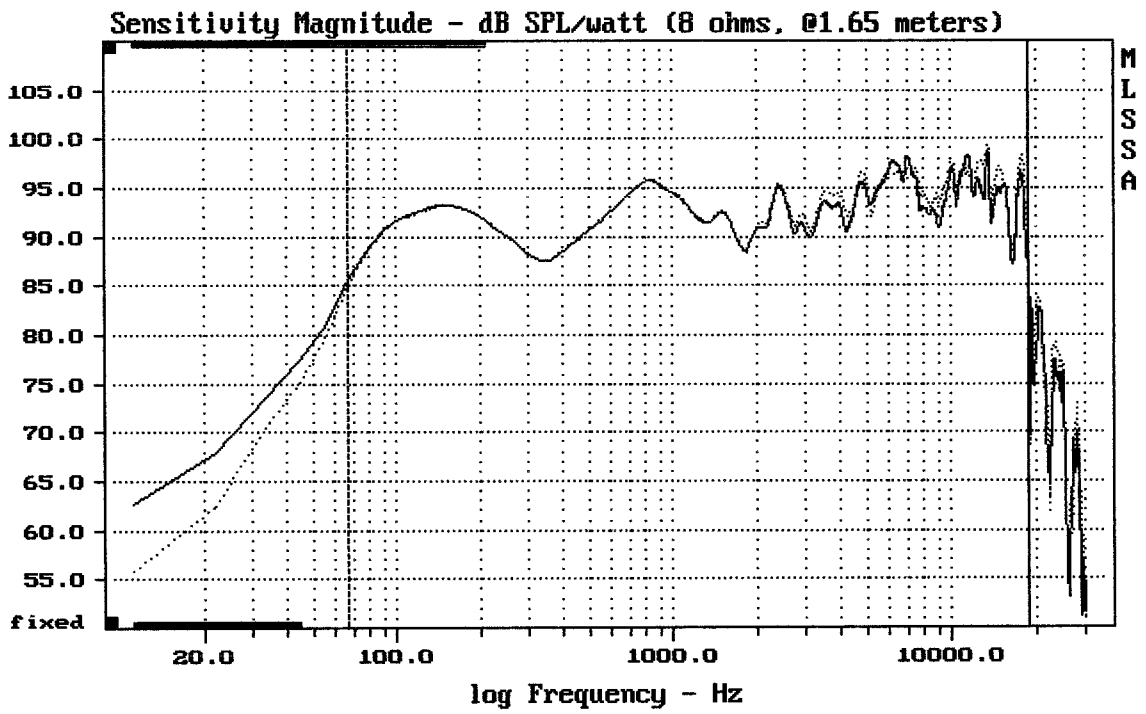
EAW UFM109

MLSSA: Frequency Domain



Overlay Compare: dev= +7.2/-3.6, std= 0.73, avg= -0.09

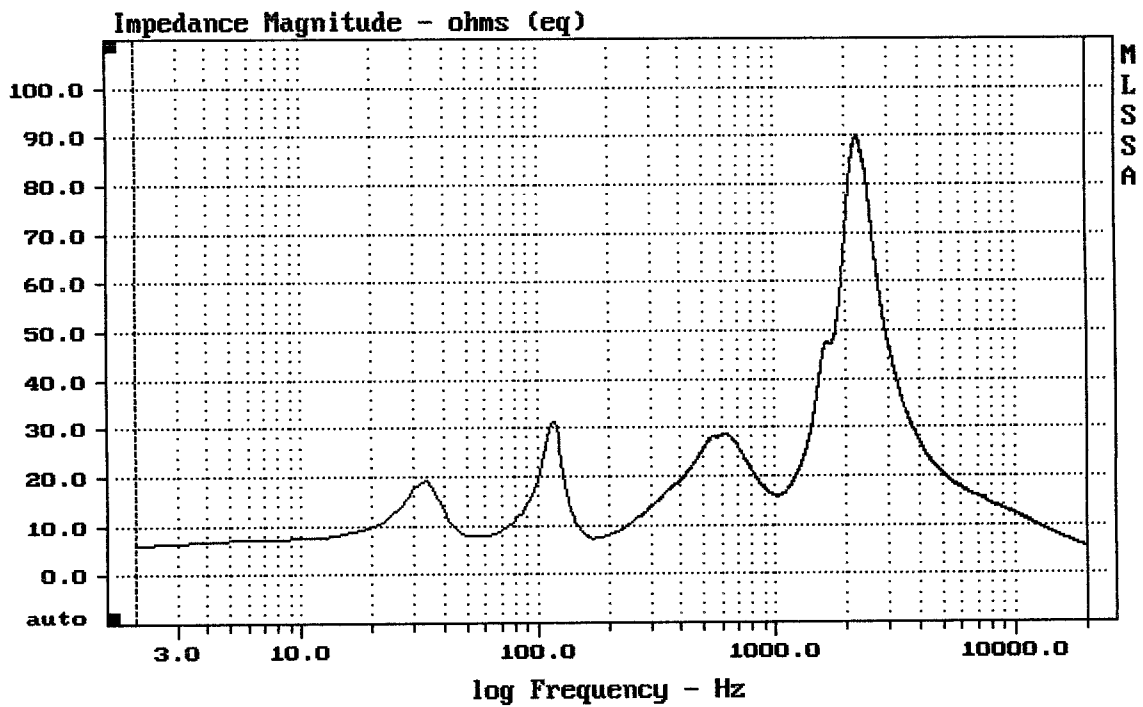
EAW UFM109



Overlay Compare: dev= +2.5/-2.4, std= 1, avg= -0.81

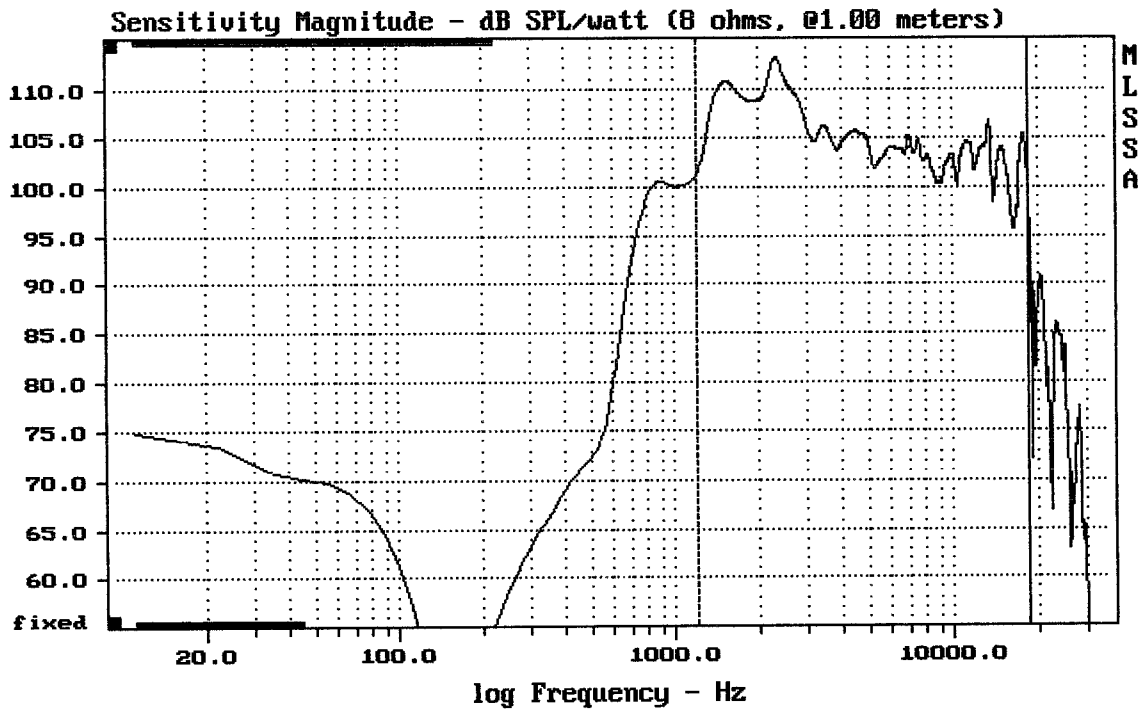
EAW UFM109

MLSSA: Frequency Domain



mean: 17.35, rms: 23.61, std: 16.02, max: 90.18, min: 5.421

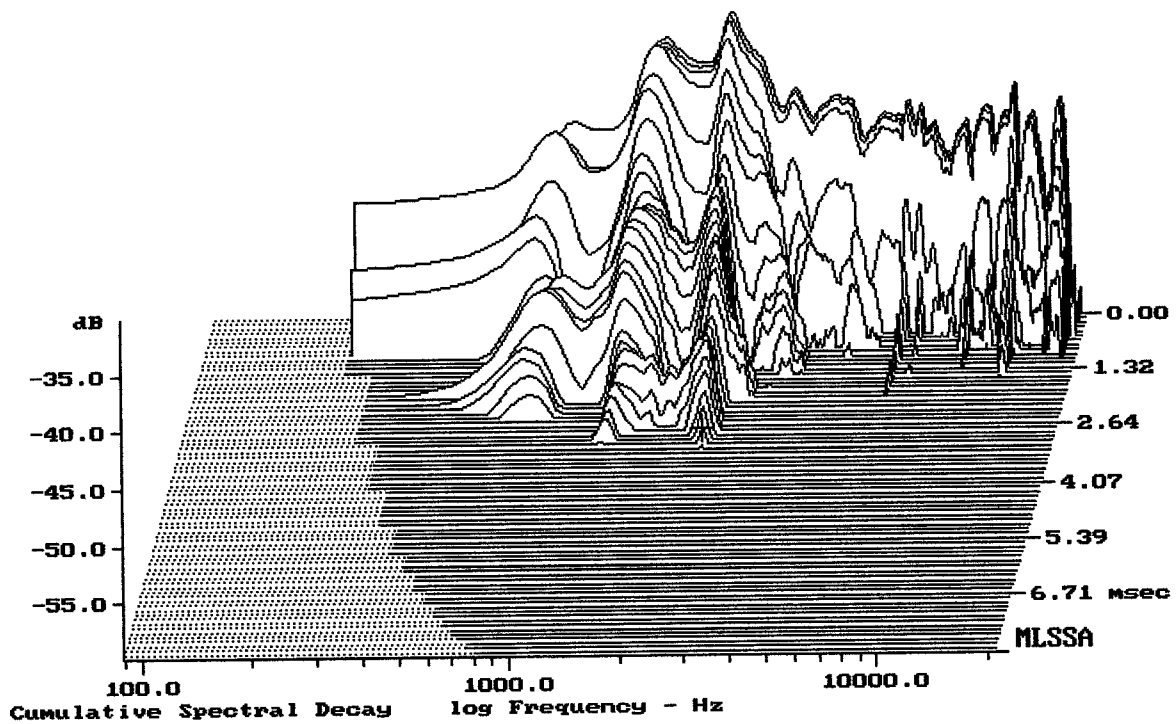
EAW UFM109



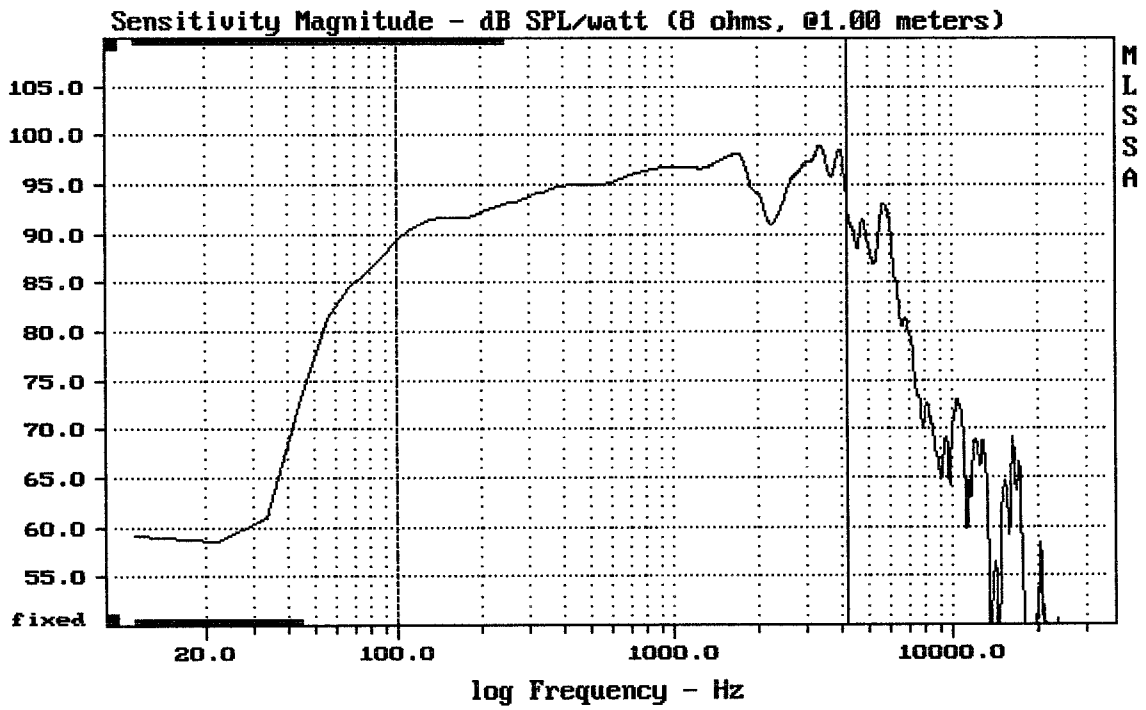
Level (1199:18710 Hz) = 106.70 dB SPL/watt (8 ohms, @1.00 meters)

1" + HORN FROM UFM109

MLSSA: Frequency Domain



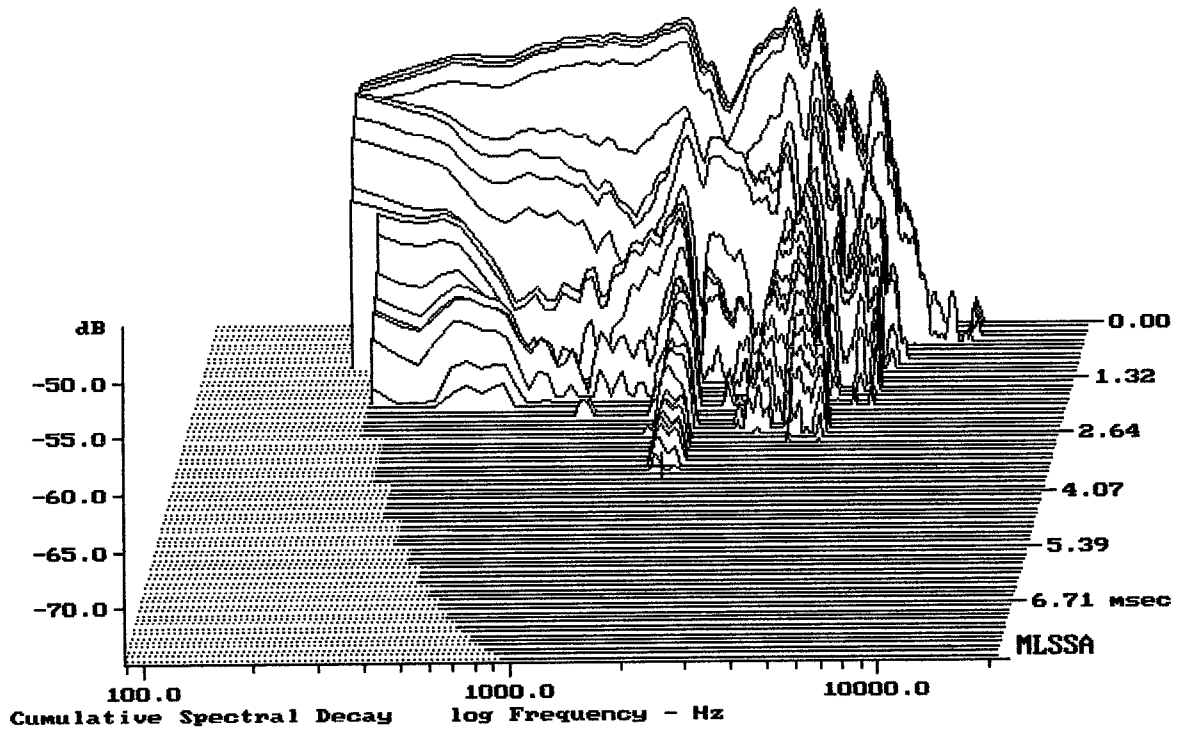
-58.54 dB, 2353 Hz (53), 3.000 msec (29)



Level (100:4206 Hz) = 95.17 dB SPL/watt (8 ohms, @1.00 meters)

FROM URM109

MLSSA: Frequency Domain



-74.69 dB, 1864 Hz (42), 3.520 msec (33)

Measured Data

QC Limits

Line	Parameter	Value	Units
1	RMSE-free	0.54	Ohms
2	Fs	74.11	Hz
3	Re	5.24	Ohms[dc]
4	Res	40.09	Ohms
5	Qms	3.48	
6	Qes	0.46	
7	Qts	0.40	
8	L1	0.54	mH
9	L2	1.03	mH
10	R2	3.91	Ohms
11	RMSE-load	0.50	Ohms
12	Vas(Sd)	32.68	liters
13	Mms	26.12	grams
14	Cms	177	$\mu\text{M}/\text{Newton}$
15	Bl	11.83	Tesla-M
16	SPLref(Sd)	96.5	dB[Re]
17	Rub-index	0.01	

Method: Mass-loaded (40.00 grams)

Area (Sd): 363.05 sq cm

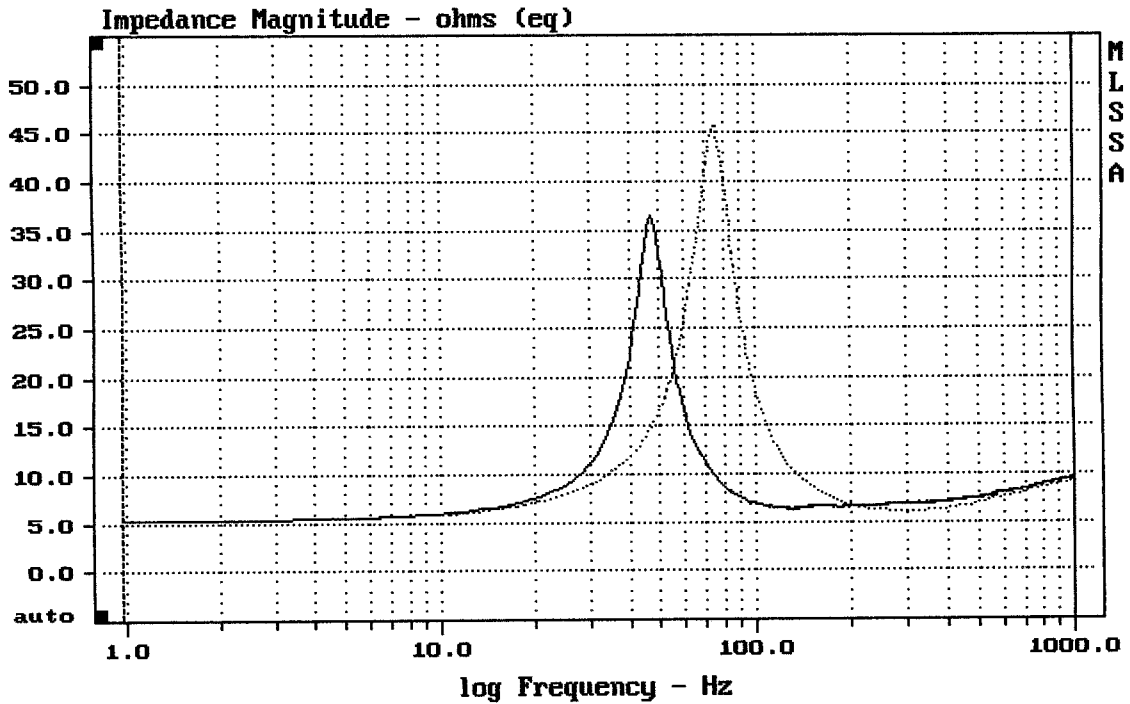
DCR mode: Measure (-0.07 ohms)

QC file: CLOSED

Analysis successful. Shift in Fs = -36.9% (-20% to -50% is recommended).

P/N 2037470 LC10-2008-8 FROM VRM109

MLSSA: Parameters



mean: 9.014, rms: 10.62, std: 5.614, max: 45.63, min: 5.332

MLSSA: Frequency Domain