

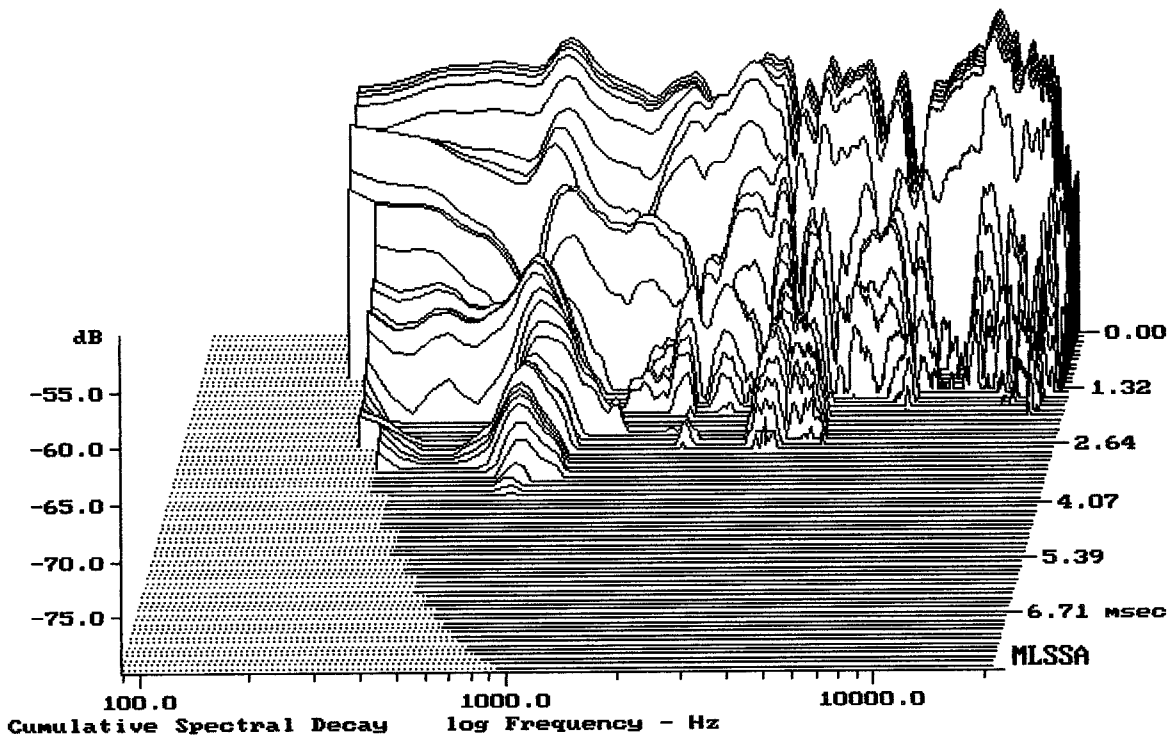

---

mean: 92.80, rms: 93.20, std: 2.35, max: 97.88, min: 83.74

---

AD-C1200

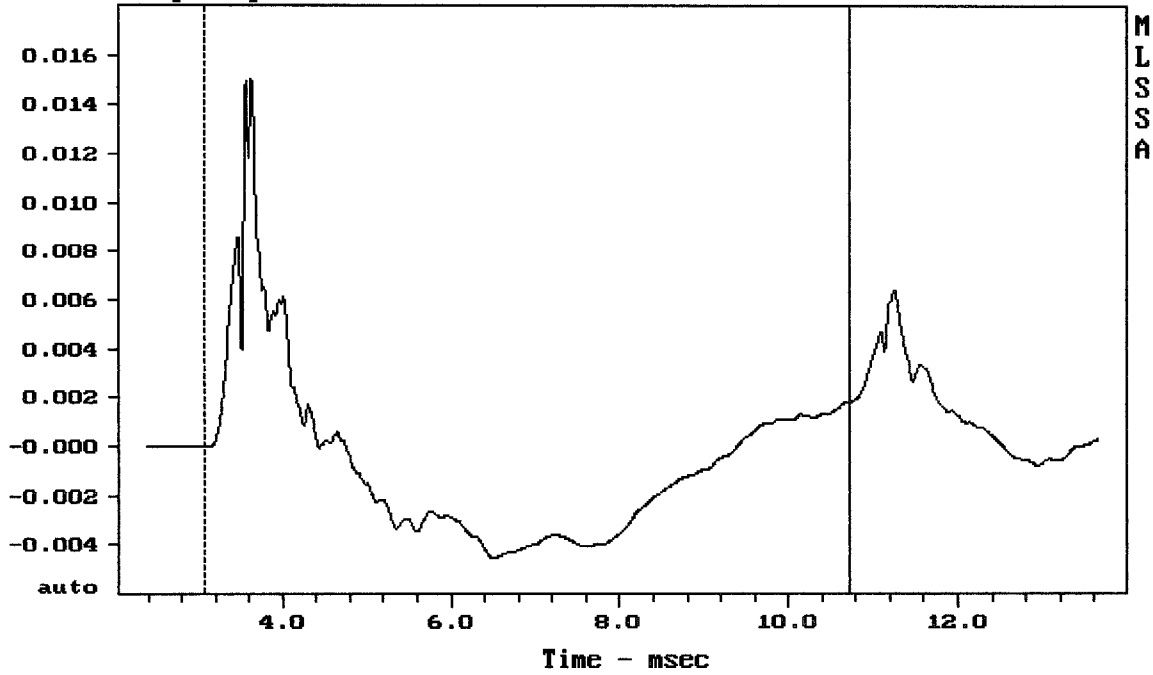
MLSSA: Frequency Domain



-78.42 dB, 3462 Hz (78), 2.750 msec (26)

DTTO

Step Response - volts



---

mean: -0.000662, rms: 0.003541, std: 0.003479, max: 0.01505, min: -0.004515

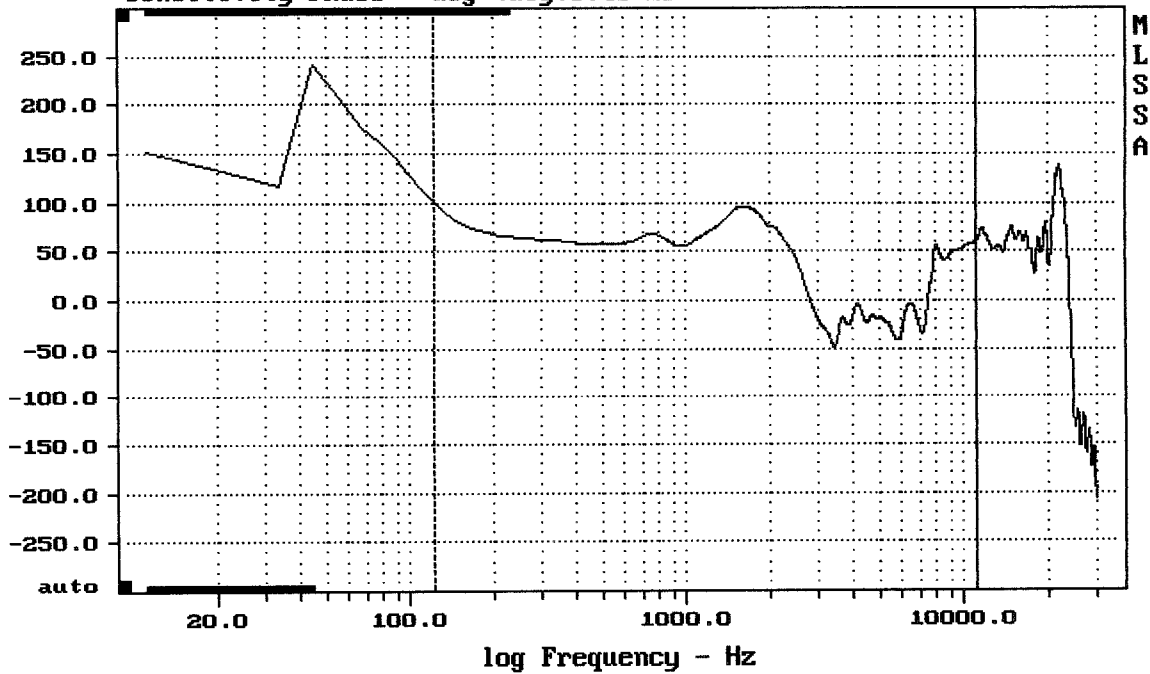
---

AD-C1200

4-29-93 2:40 PM

MLSSA: Time Domain

Sensitivity Phase - deg (dly:0.48 ms)



---

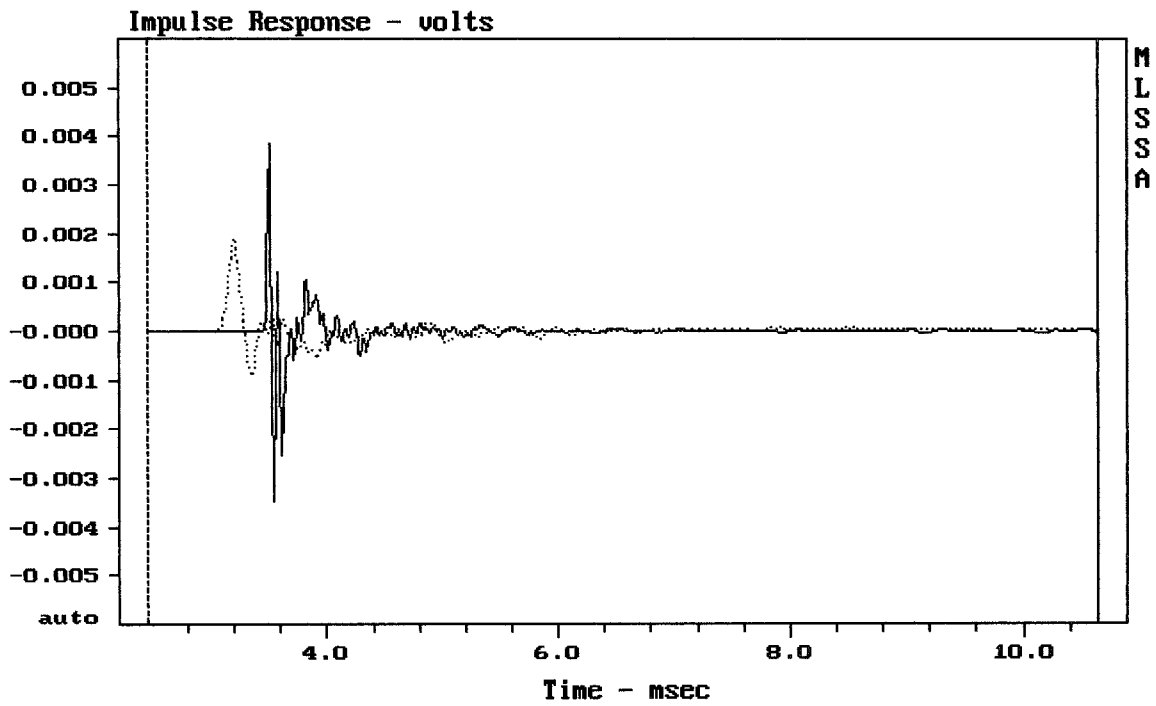
mean: 22.84, rms: 47.32, std: 41.44, max: 101.3, min: -48.27

---

AD-C1200

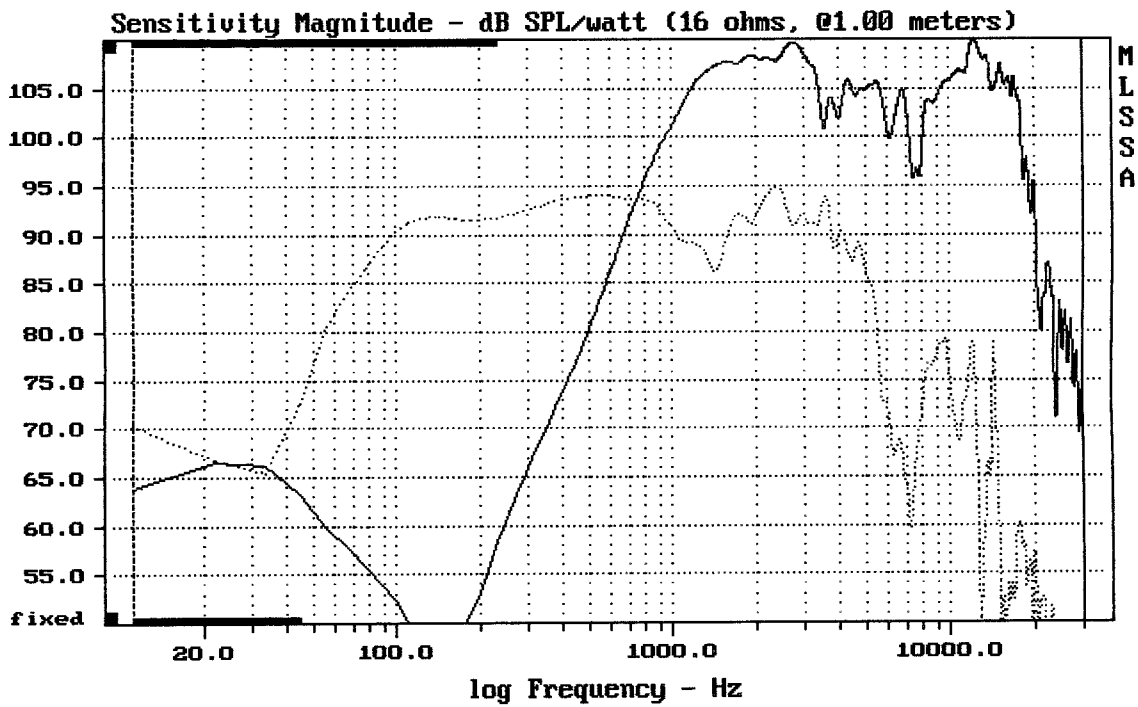
4-29-93 2:40 PM

MLSSA: Frequency Domain



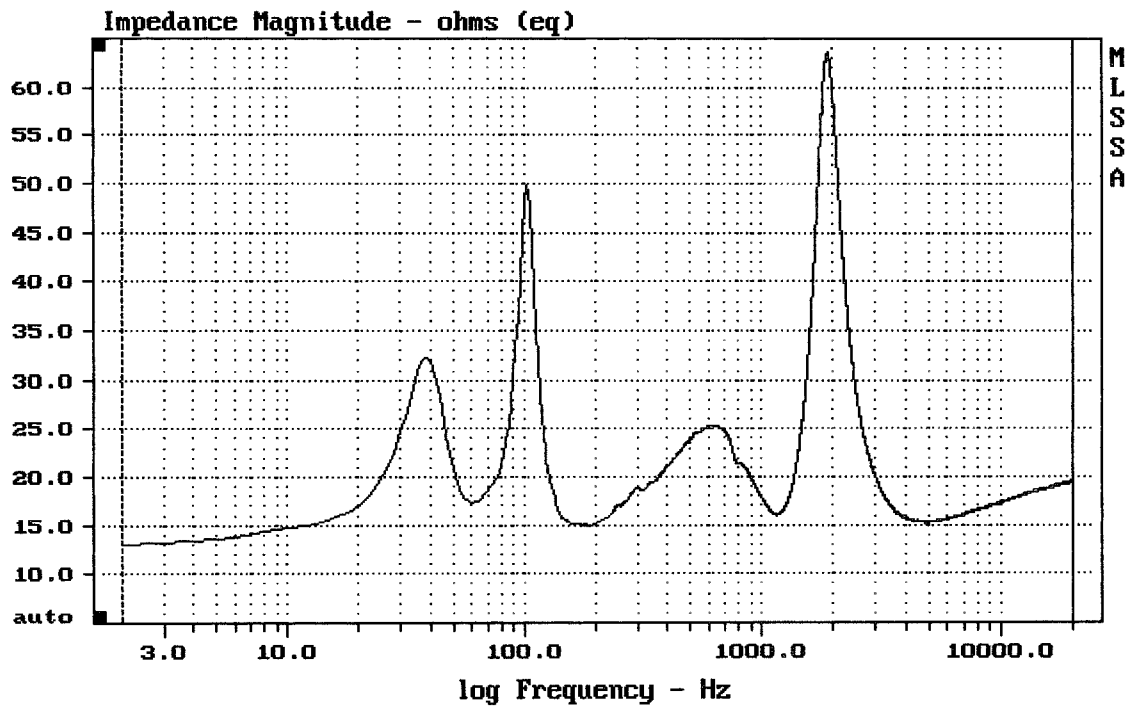
AD-C1200

MLSSA: Time Domain



AD-C1200

MLSSA: Frequency Domain



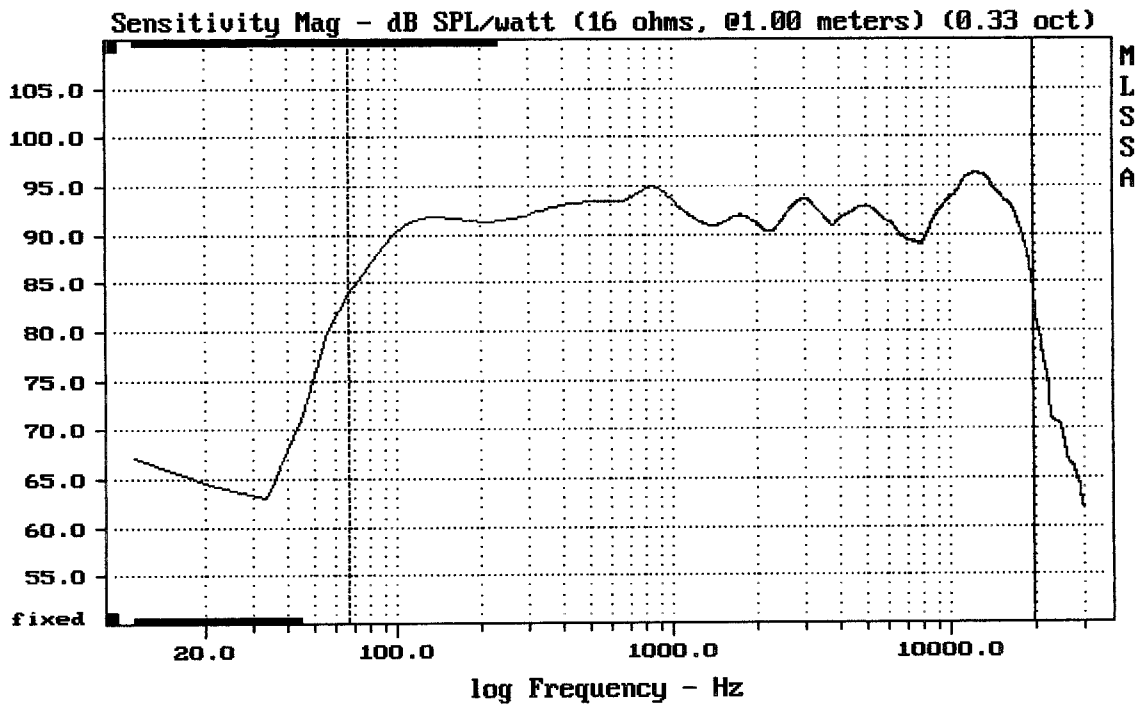

---

mean: 19.39, rms: 20.55, std: 6.794, max: 63.67, min: 12.95

---

AD-C1200

MLSSA: Frequency Domain



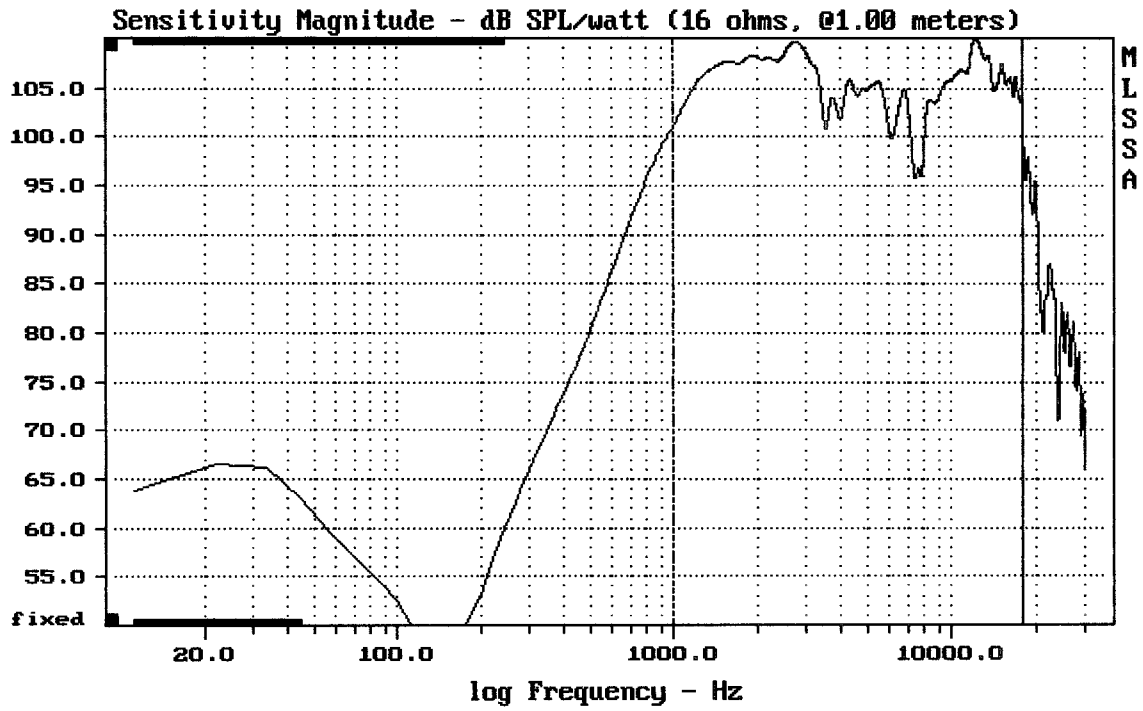

---

Level (67:19809 Hz) = 92.33 dB SPL/watt (16 ohms, @1.00 meters) (0.33 oct)

---

AD-C1200

MLSSA: Frequency Domain



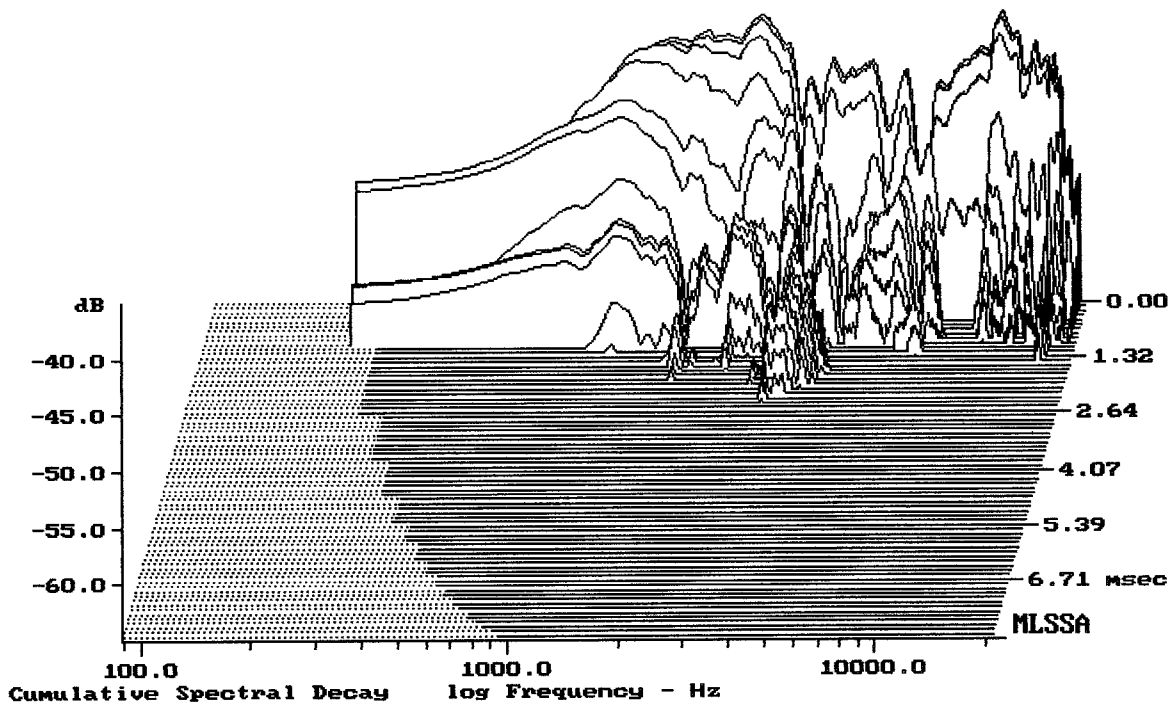

---

Level (999:18111 Hz) = 106.25 dB SPL/watt (16 ohms, @1.00 meters)

---

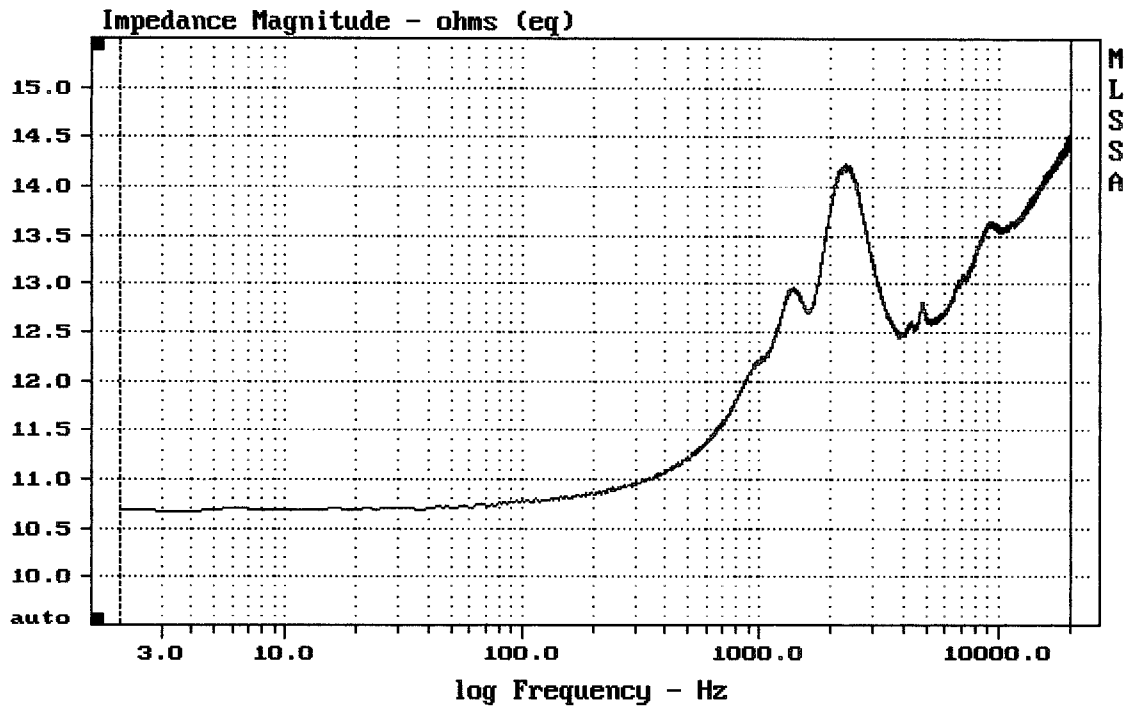
AD-C1200

MLSSA: Frequency Domain



-63.18 dB, 3240 Hz (73), 2.310 msec (22)

DTTO




---

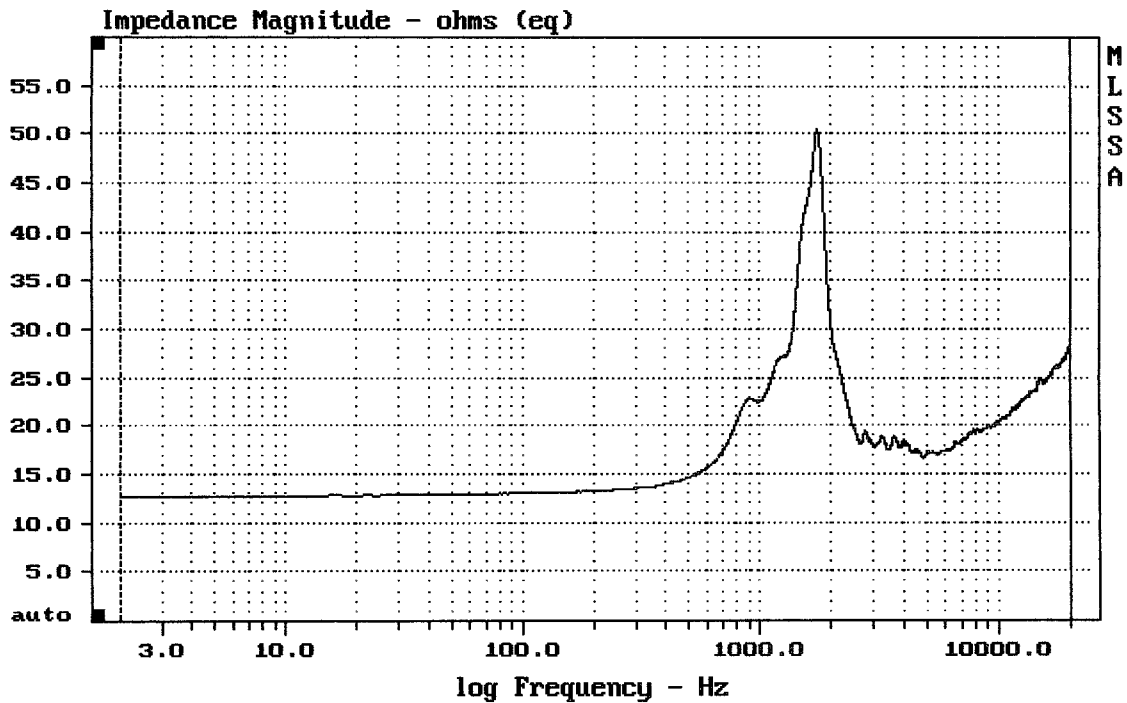
mean: 13.45, rms: 13.47, std: 0.768, max: 14.57, min: 10.68

---

8" FROM QSC AD-CB21

4-26-93 3:40 AM

MLSSA: Frequency Domain




---

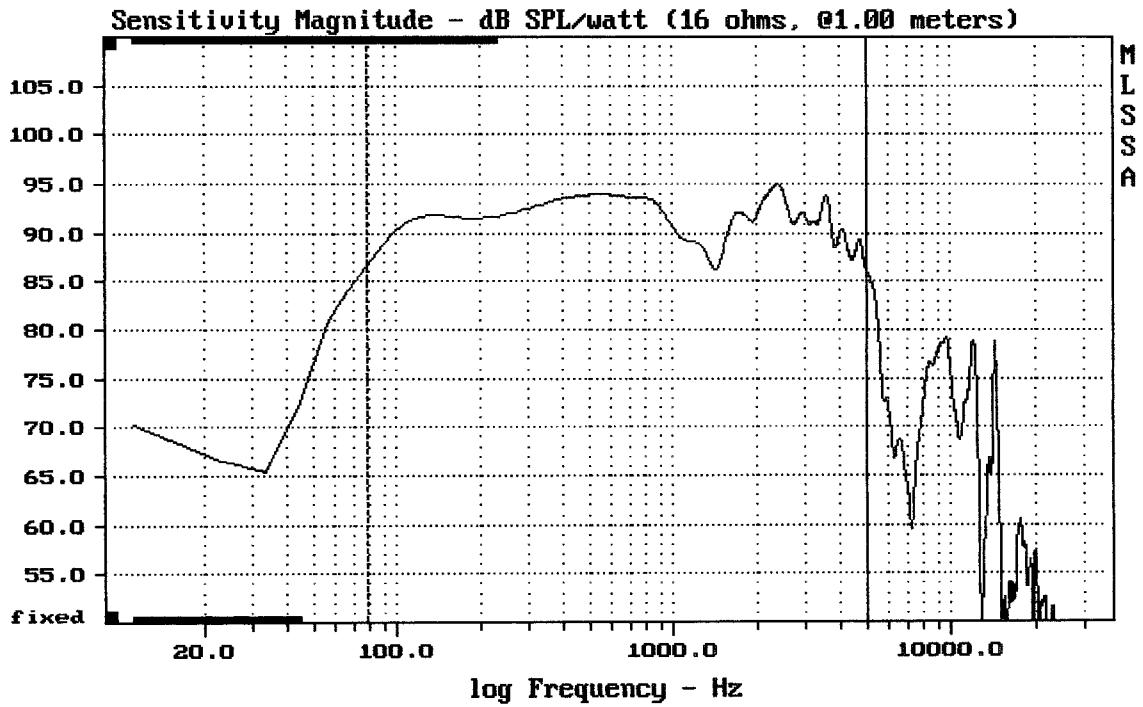
mean: 22.2, rms: 22.76, std: 5.028, max: 50.4, min: 12.71

---

12" FROM QSC AD-C1200

4-26-93 3:44 AM

MLSSA: Frequency Domain



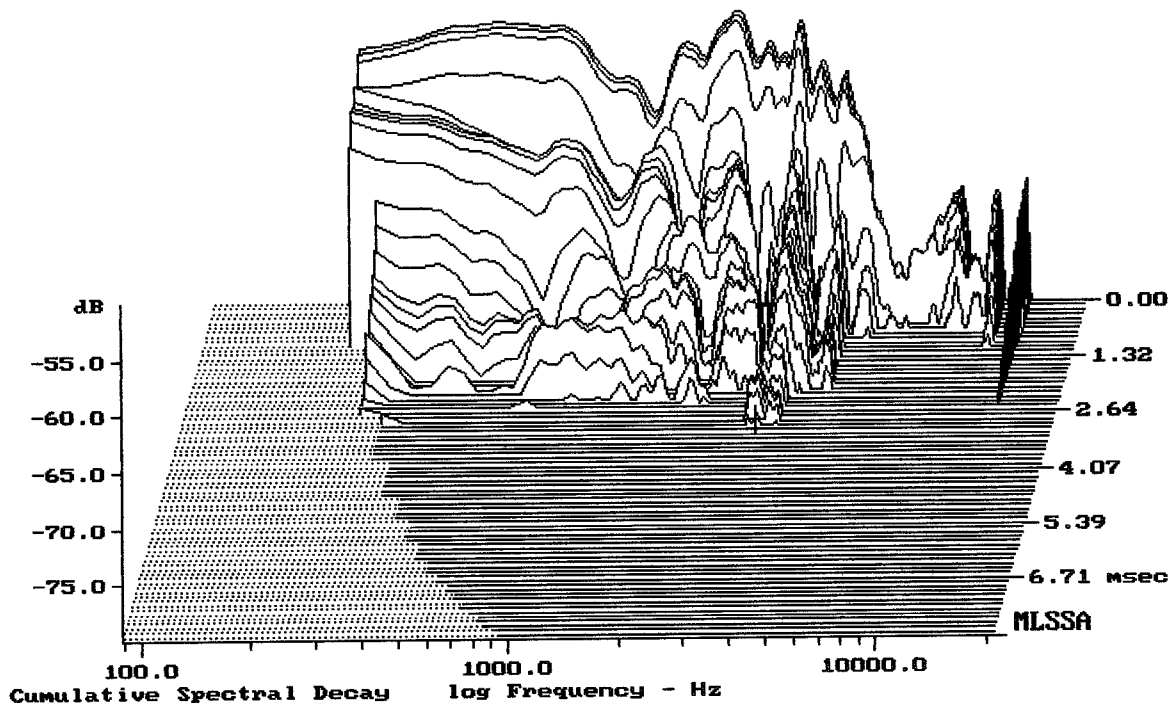

---

Level (78:5005 Hz) = 91.93 dB SPL/watt (16 ohms, @1.00 meters)

---

AD-C1200

MLSSA: Frequency Domain



-79.53 dB, 3240 Hz (73), 2.970 msec (28)

DTTO

## Measured Data

QC Limits

Line	Parameter	Value	Units
1	RMSE-free	0.62	Ohms
2	Fs	66.93	Hz
3	Re	12.21	Ohms[dc]
4	Res	49.21	Ohms
5	Qms	3.59	
6	Qes	0.89	
7	Qts	0.71	
8	L1	1.68	mH
9	L2	2.79	mH
10	R2	10.83	Ohms
11	RMSE-load	1.07	Ohms
12	Vas(Sd)	50.24	liters
13	Mms	42.74	grams
14	Cms	132	$\mu\text{M}/\text{Newton}$
15	B1	15.70	Tesla-M
16	SPLref(Sd)	94.1	dB[Re]
17	Rub-index	0.01	

Method: Mass-loaded (60.00 grams)

Area (Sd): 520.00 sq cm

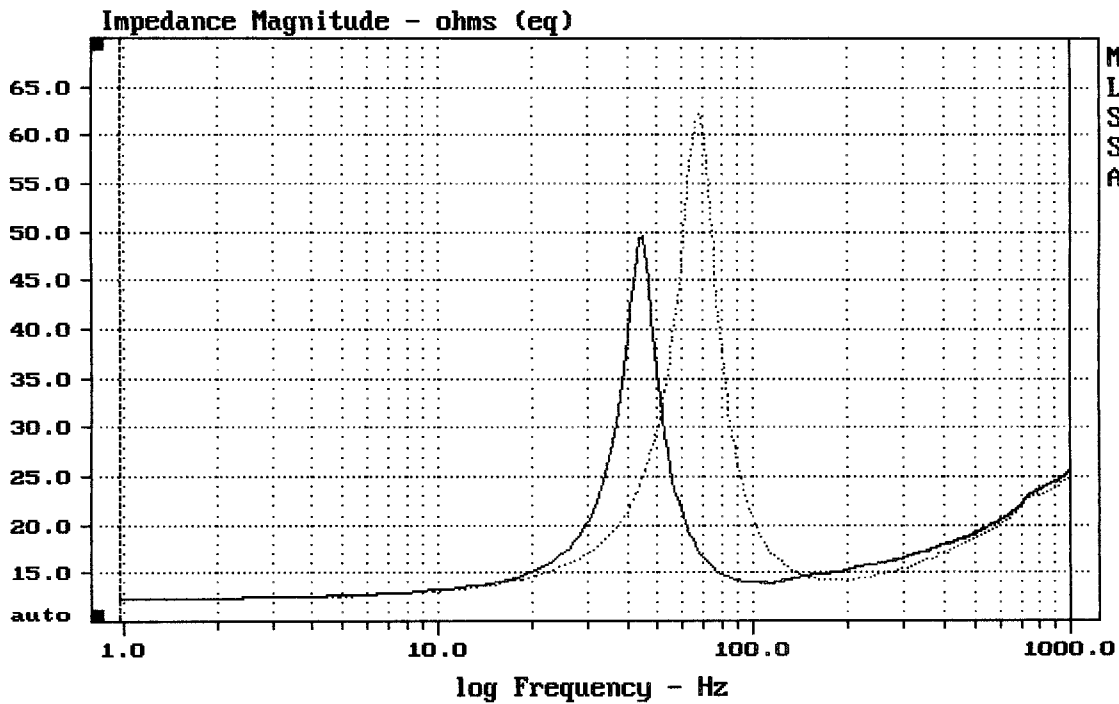
DCR mode: Measure (-0.15 ohms)

QC file: CLOSED

Analysis successful. Shift in Fs = -34.7% (-20% to -50% is recommended).

12" from QSC AD-C1200

MLSSA: Parameters




---

mean: 20.39, rms: 21.36, std: 6.371, max: 62.21, min: 12.36

---

MLSSA: Frequency Domain