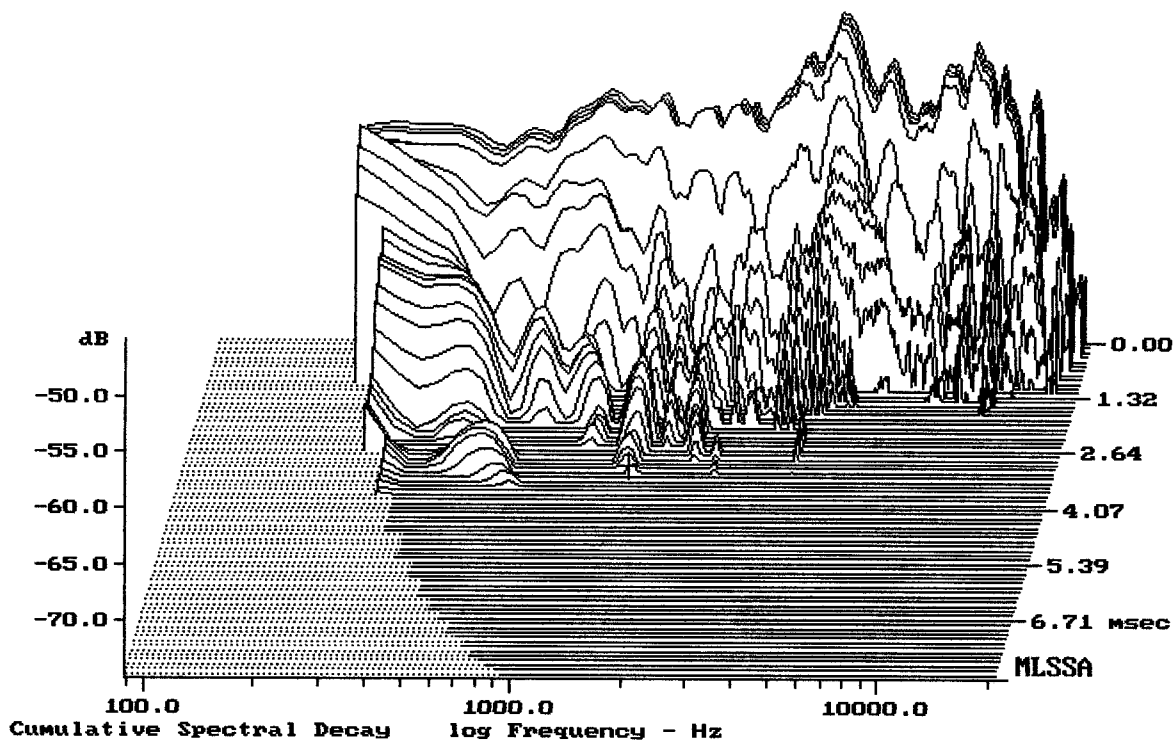


mean: 97.85, rms: 98.58, std: 3.10, max: 105.00, min: 85.60

VERSE INSIDER 10

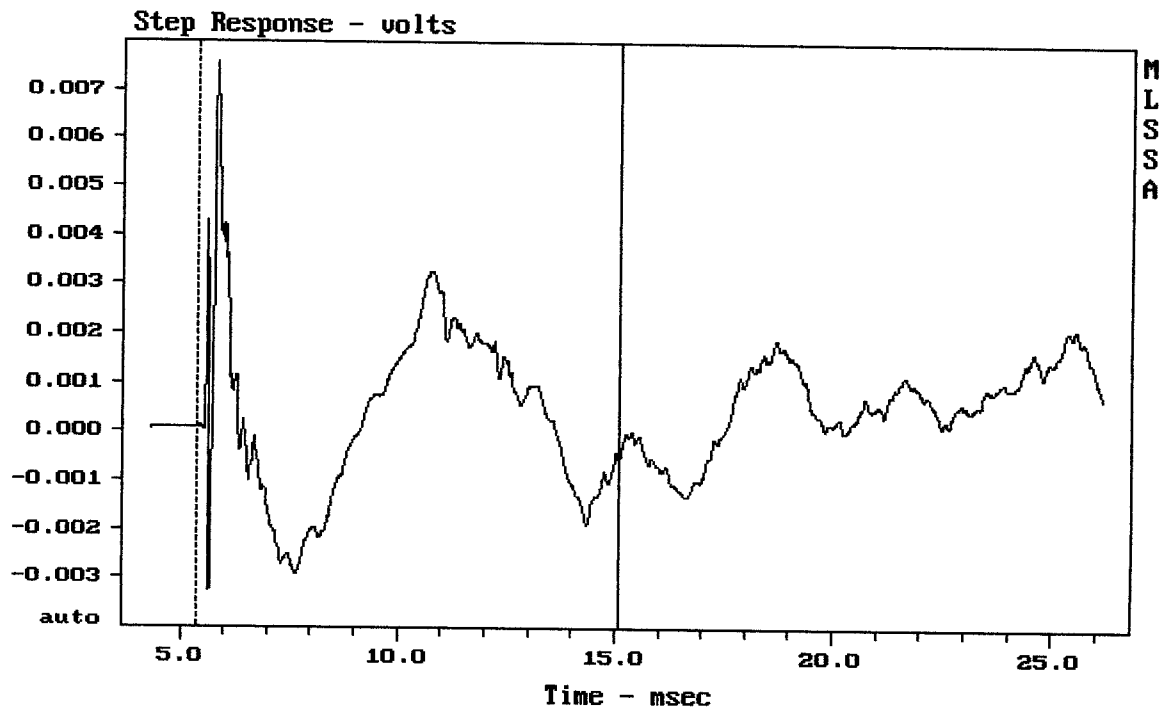
4-30-93 8:59 PM

MLSSA: Frequency Domain



-74.33 dB, 1465 Hz (33), 3.190 msec (30)

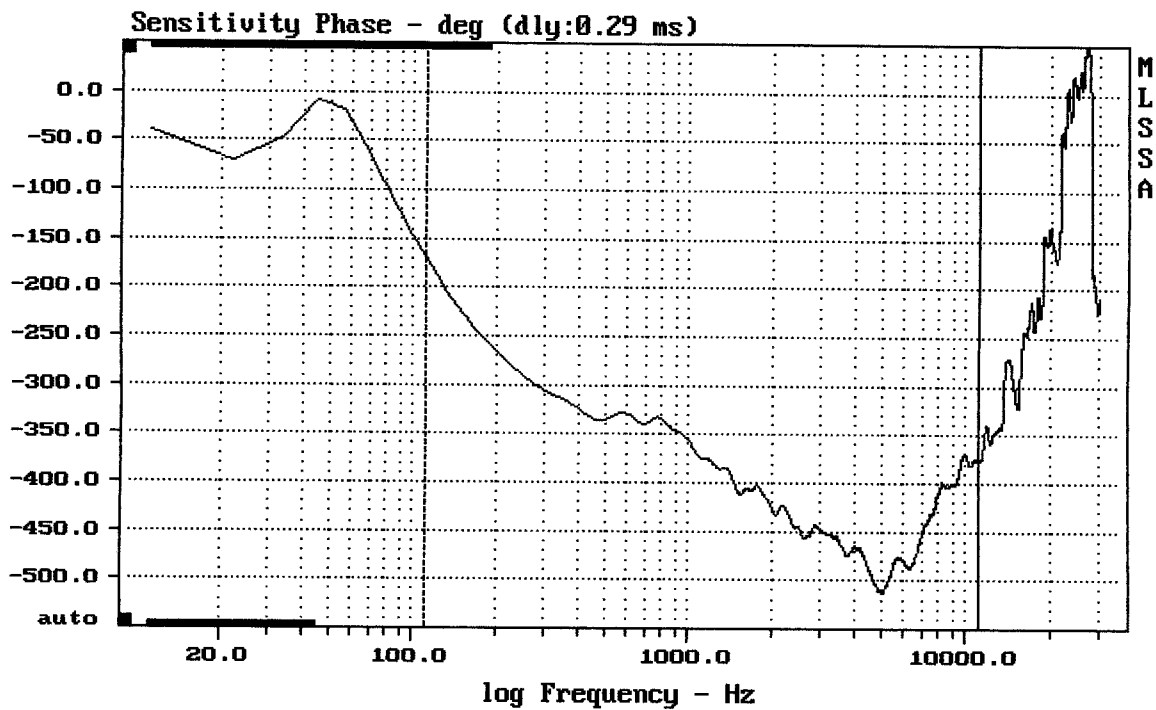
DTTO



mean: 0.0003133, rms: 0.001851, std: 0.001824, max: 0.007554, min: -0.003262

VERSE INSIDER 10

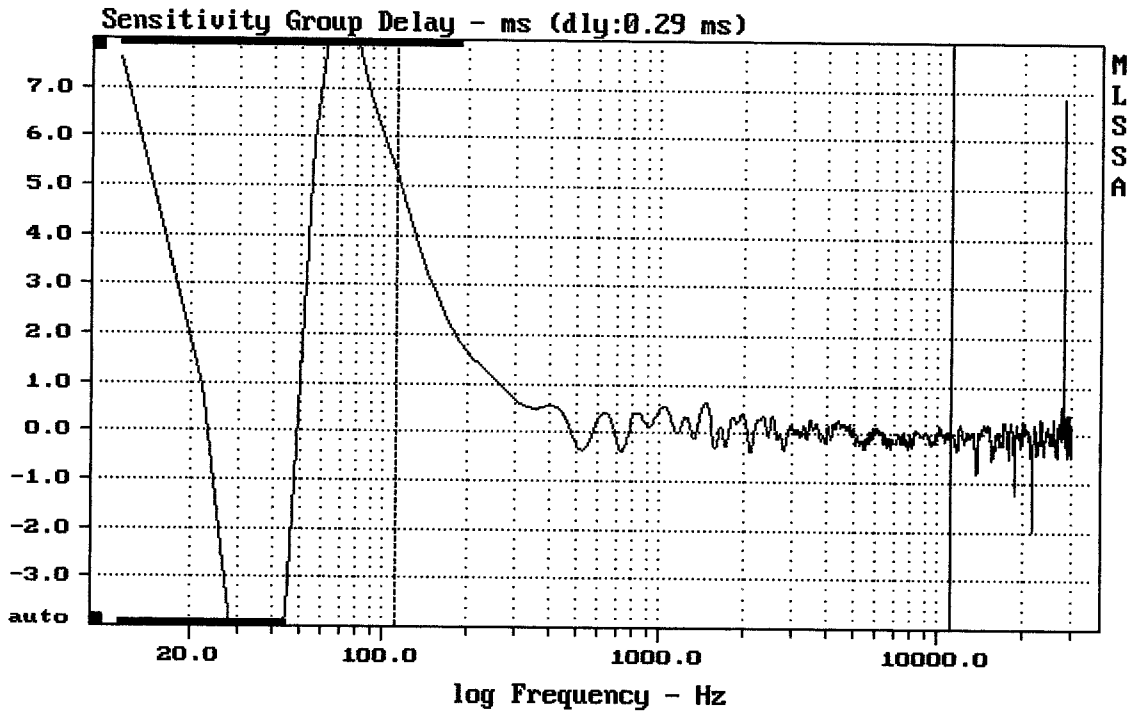
MLSSA: Time Domain



mean: -425.1, rms: 428.4, std: 52.99, max: -168.9, min: -513.4

VERSE INSIDER 10

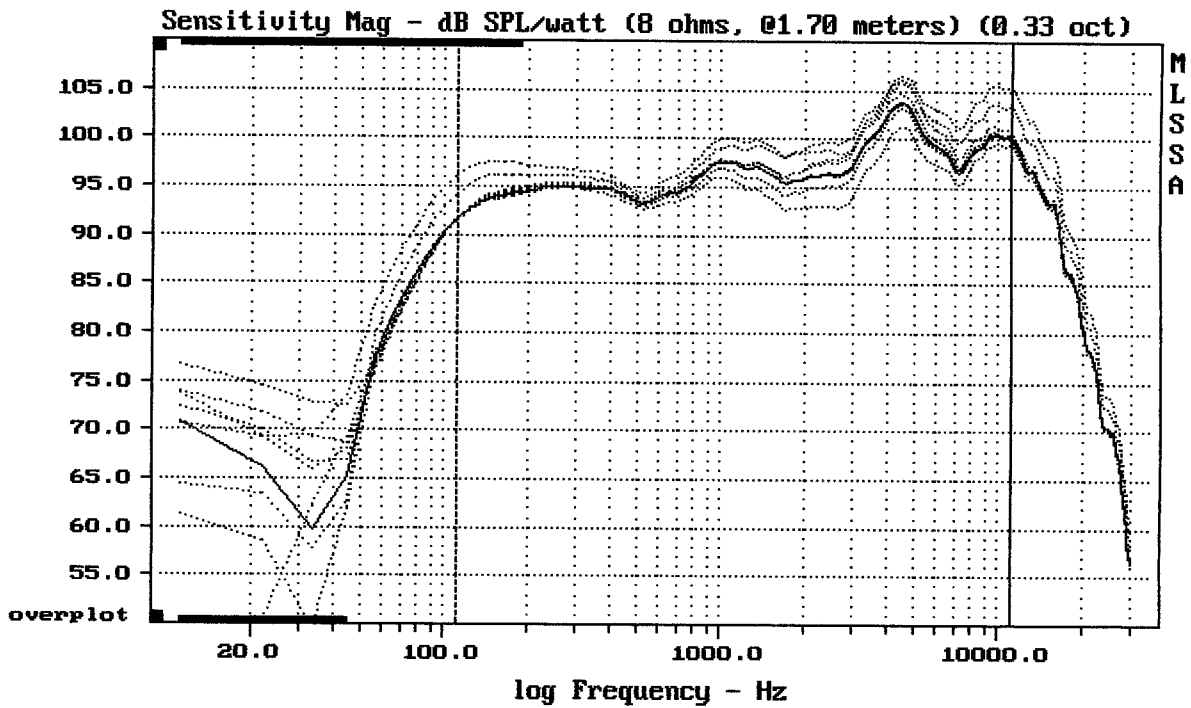
MLSSA: Frequency Domain



mean: 0.05511, rms: 0.3786, std: 0.3746, max: 5.276, min: -0.3949

VERSE INSIDER 10

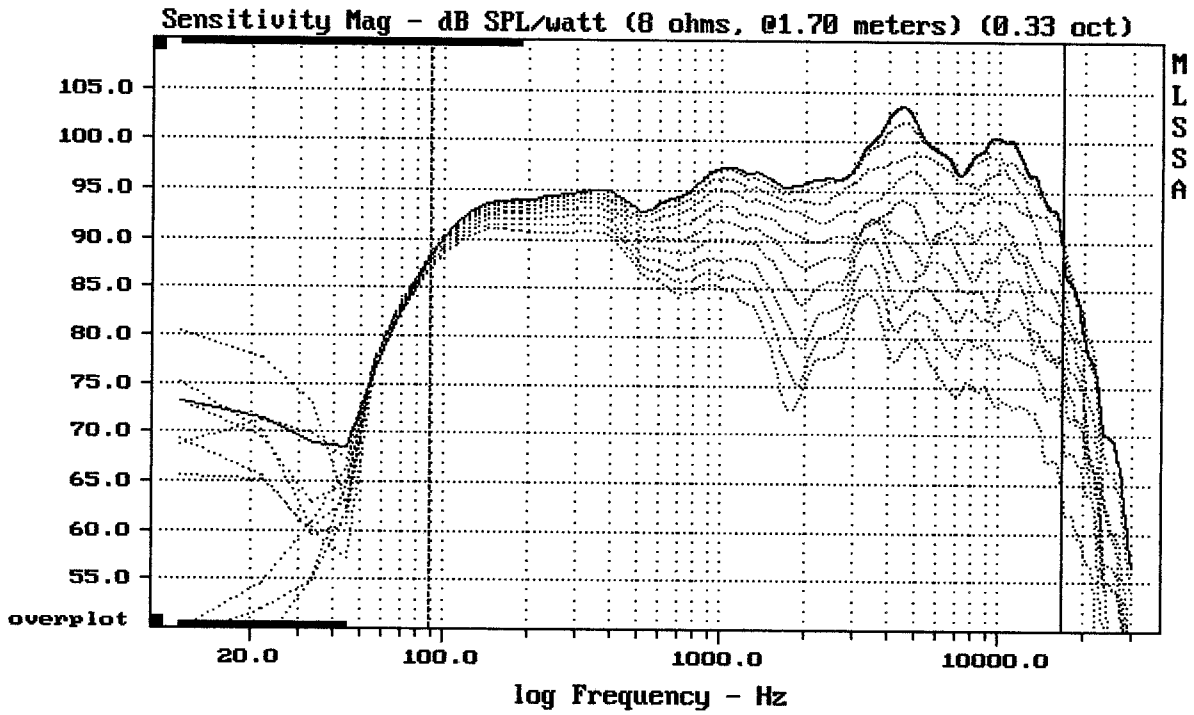
MLSSA: Frequency Domain



CURSOR: y = 105.419 x = 11075.1062 (998)

VERSE INSIDER 10

MLSSA: Frequency Domain

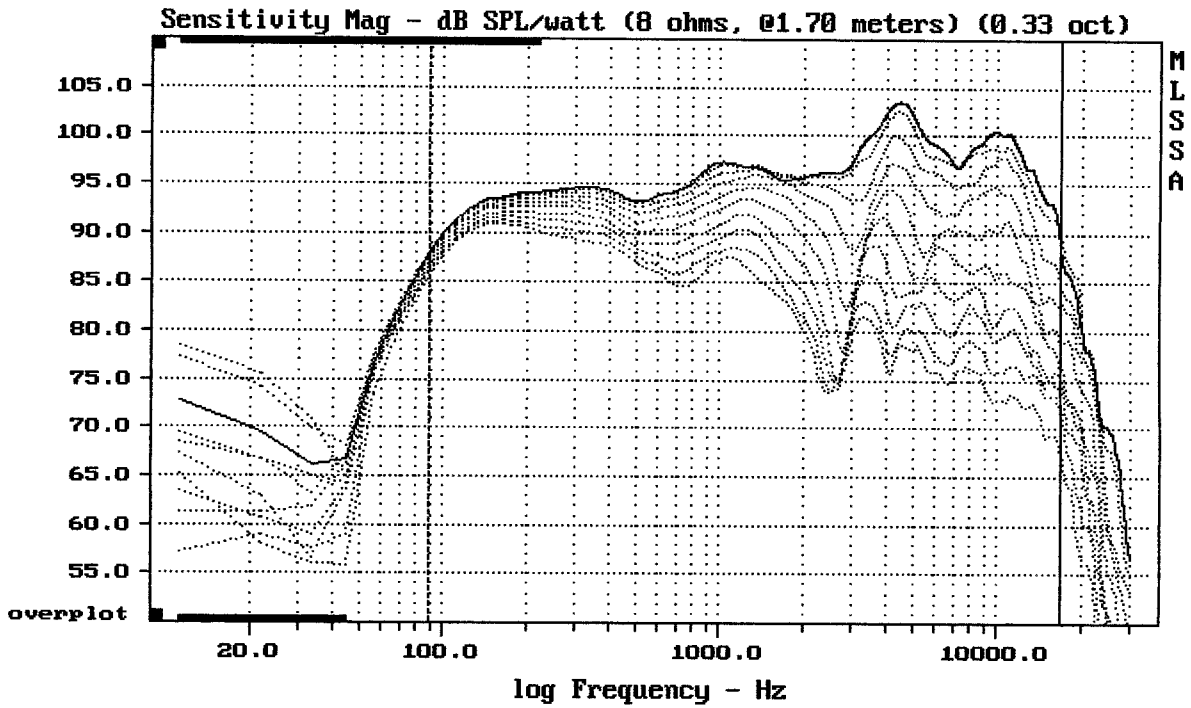


Overlay Compare: dev= +21/-4.9, std= 5, avg= -22

VERSE INSIDER 10

4-30-93 8:55 PM

MLSSA: Frequency Domain

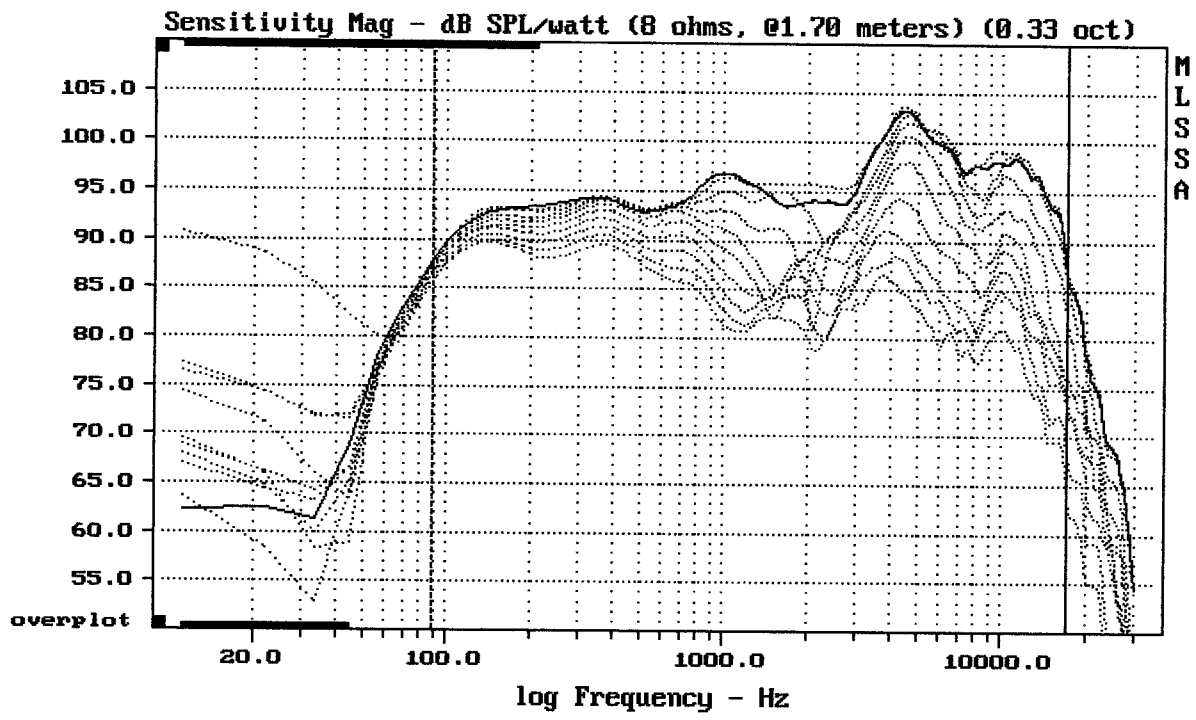


Overlay Compare: dev= +20/-5.5, std= 5.1, avg= -22

VERSE INSIDER 10

4-30-93 8:57 PM

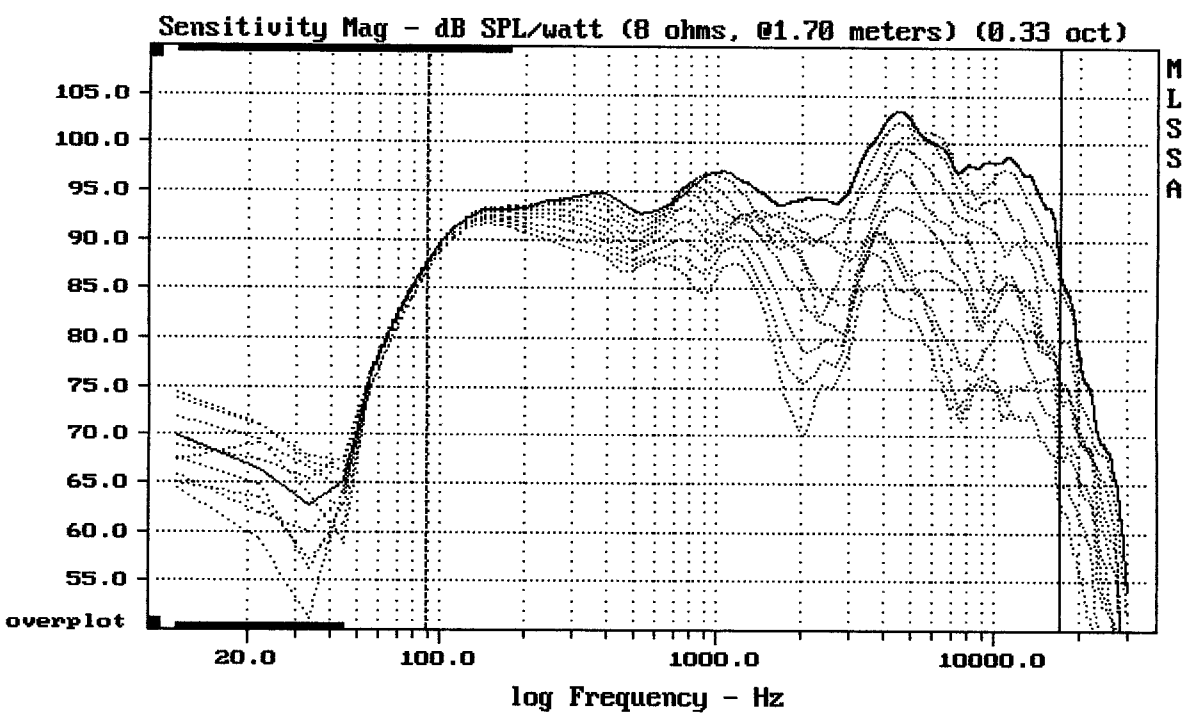
MLSSA: Frequency Domain



Overlay Compare: dev= +16/-6.3, std= 4.3, avg= -18

VERSE INSIDER 10

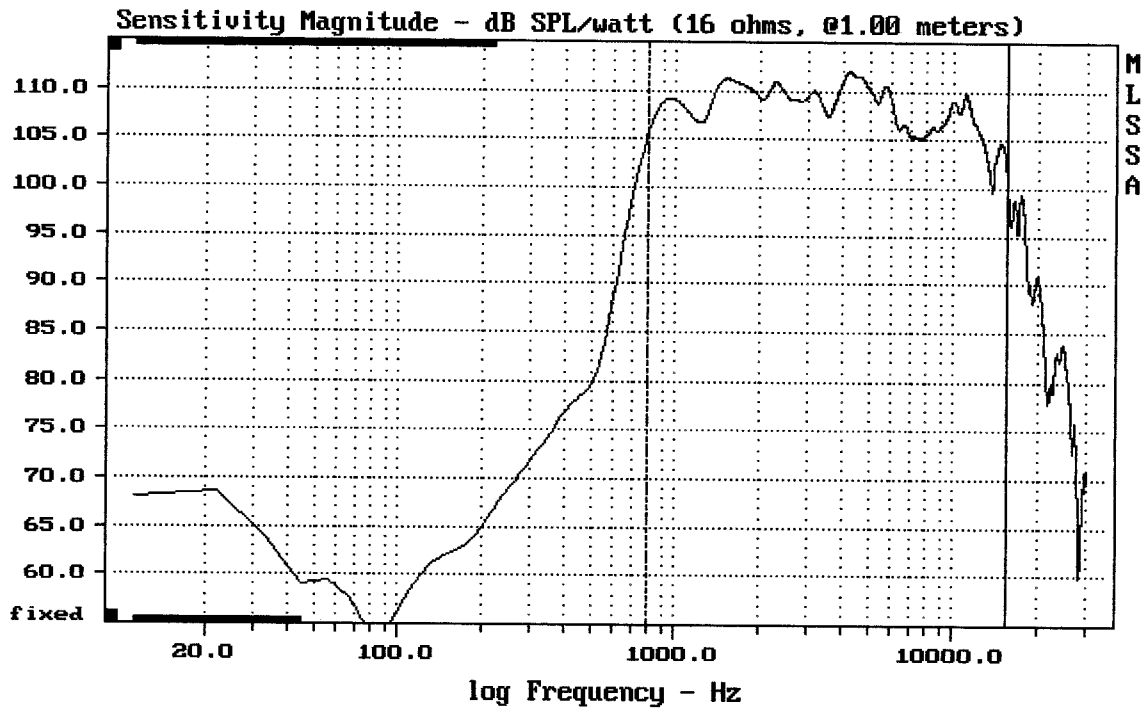
MLSSA: Frequency Domain



Overlay Compare: dev= +21/-5.3, std= 5.2, avg= -22

VERSE INSIDER 10

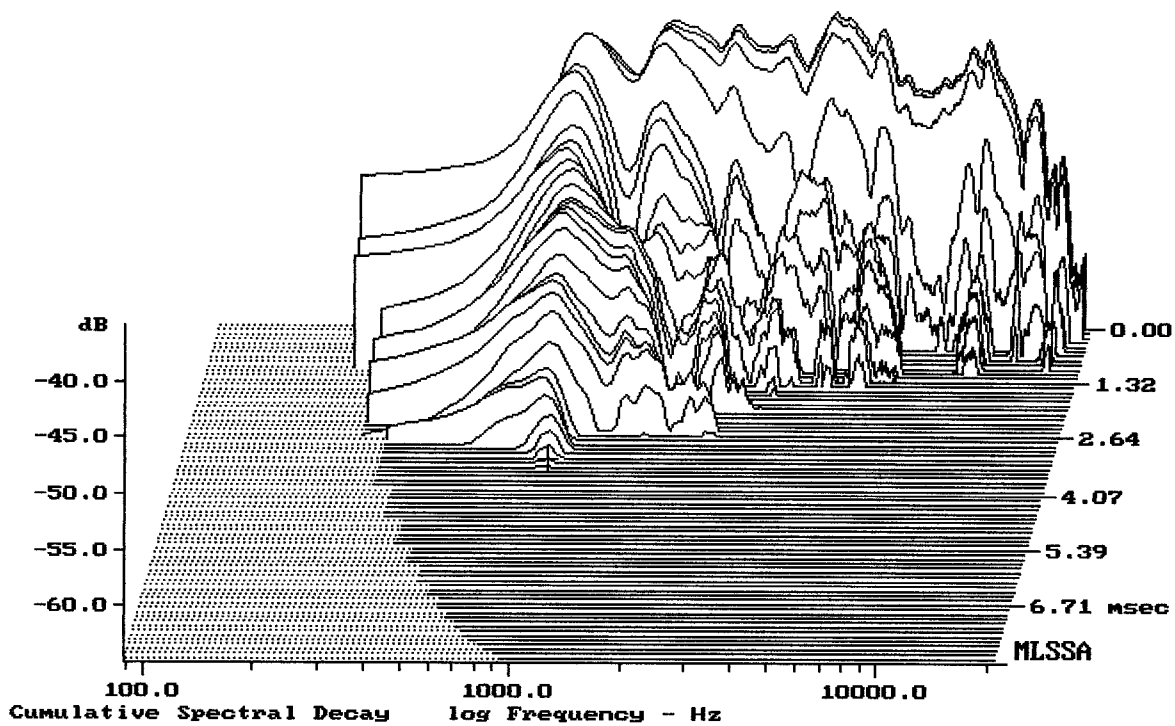
MLSSA: Frequency Domain



Level (799:15503 Hz) = 108.88 dB SPL/watt (16 ohms, @1.00 meters)

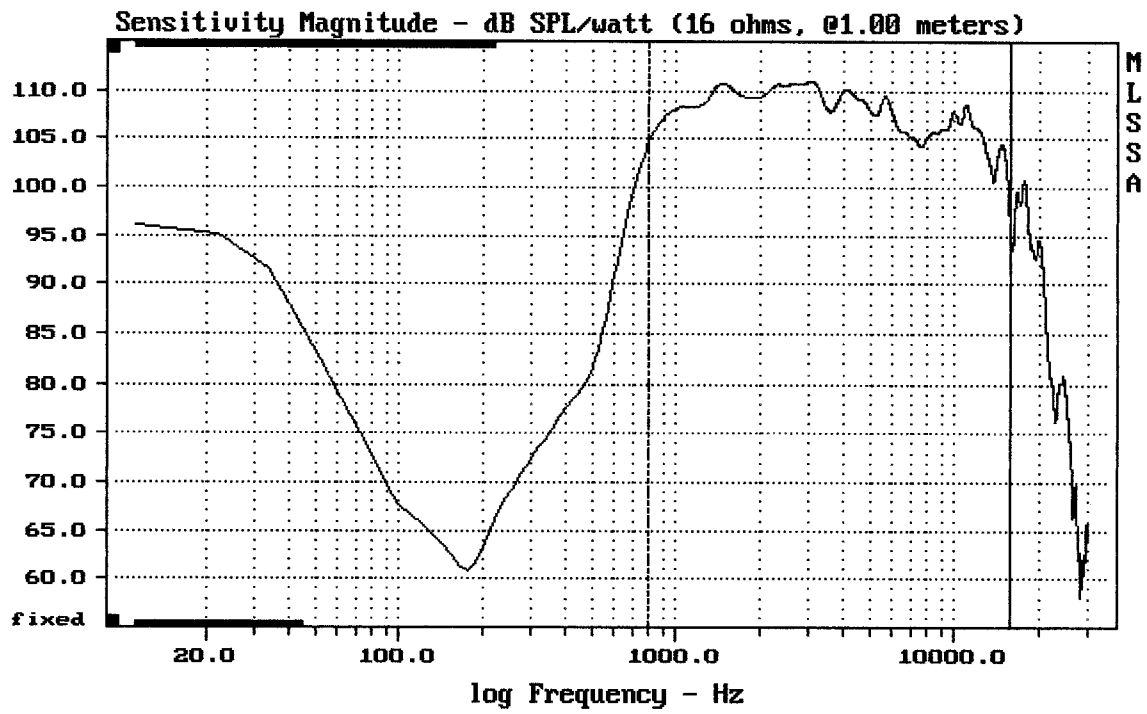
1" + HORN VERSE INSIDER 10

MLSSA: Frequency Domain



-64.61 dB, 888 Hz (20), 3.300 msec (31)

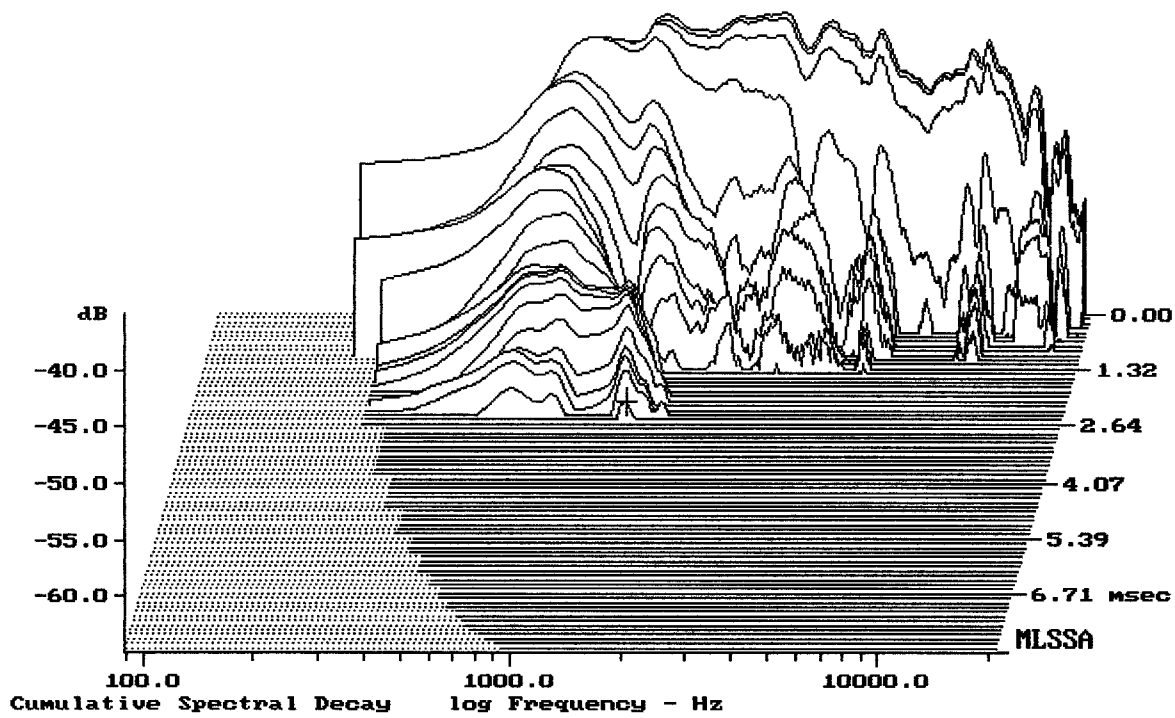
DTTO



Level (799:15703 Hz) = 108.49 dB SPL/watt (16 ohms, @1.00 meters)

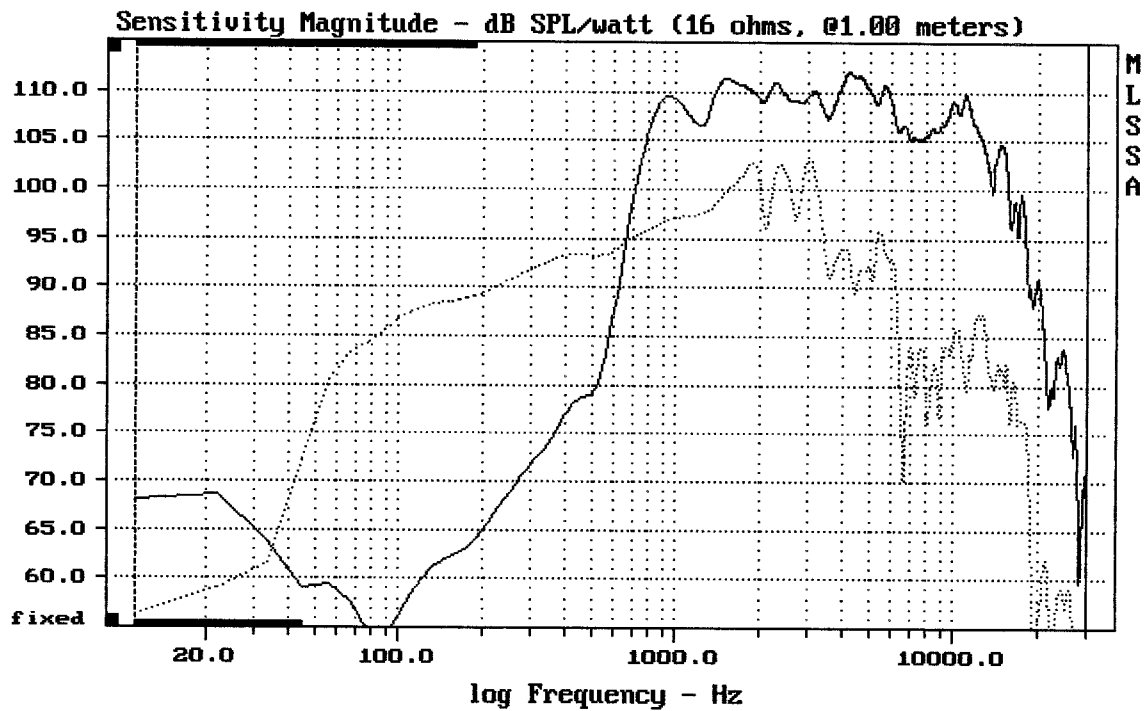
ND1020 160HM + A7570

MLSSA: Frequency Domain



-63.41 dB, 1376 Hz (31), 2.530 msec (24)

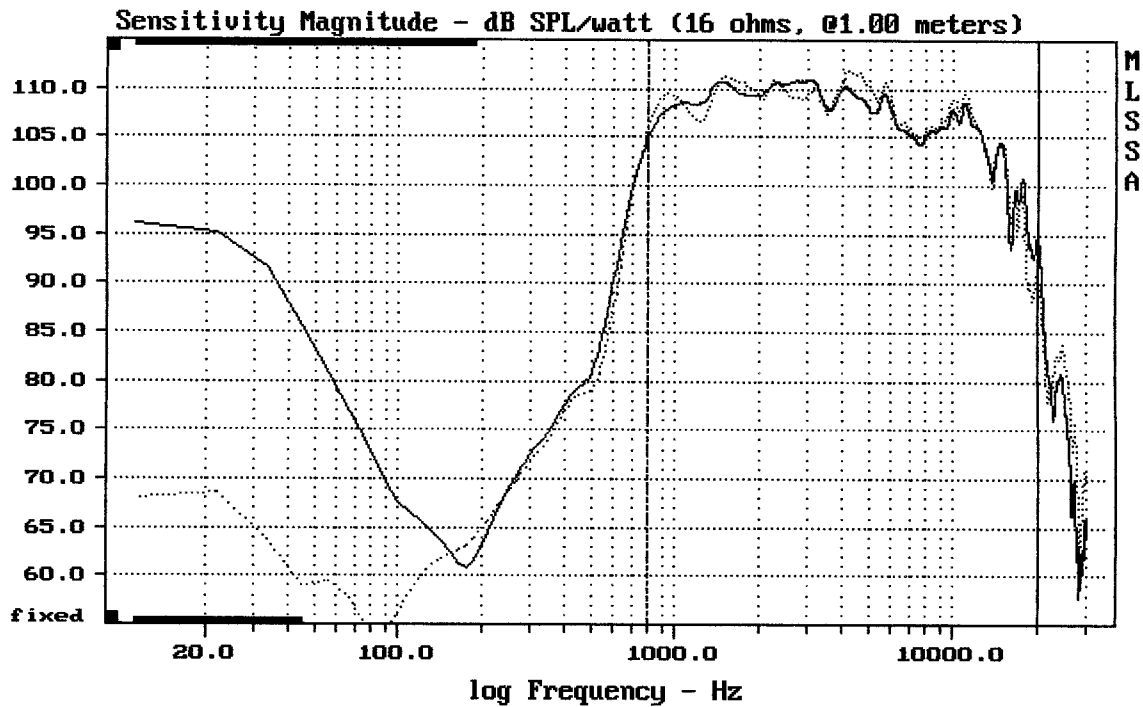
DTTO



CURSOR: dy = -27.4468 x = 30007.1014 (2704)

1" + HORN VERSE INSIDER 10

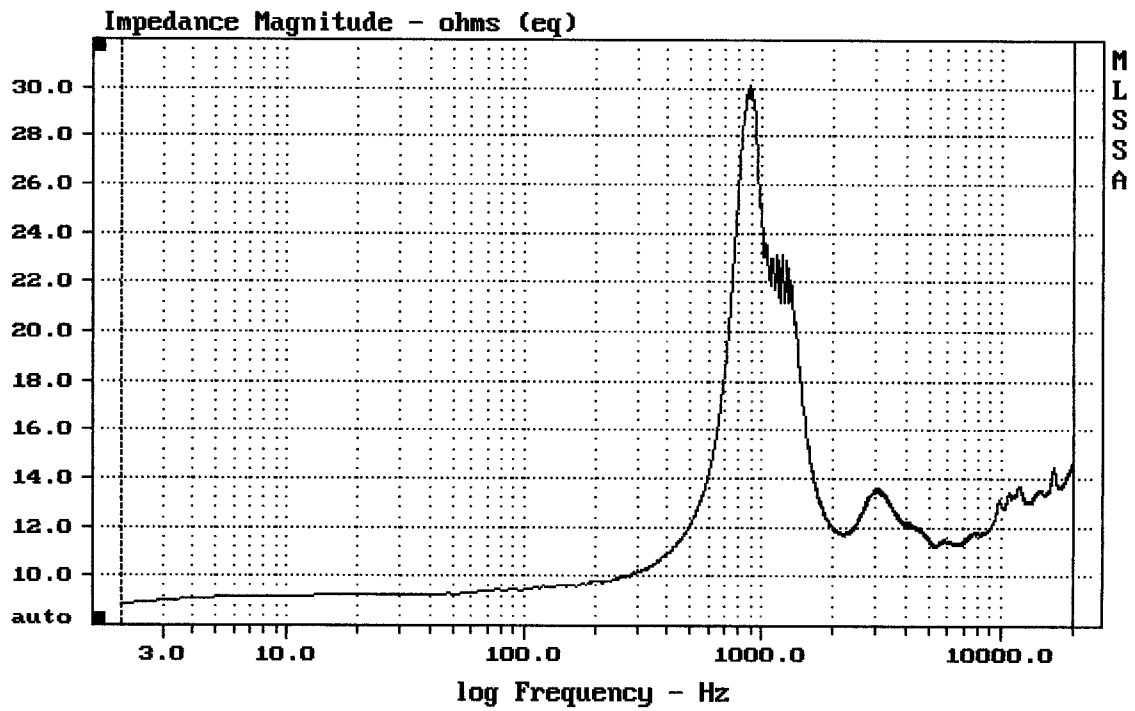
MLSSA: Frequency Domain



Overlay Compare: dev= +5.1/-2.9, std= 1.8, avg= 0.069

DTT0/A7570 ---

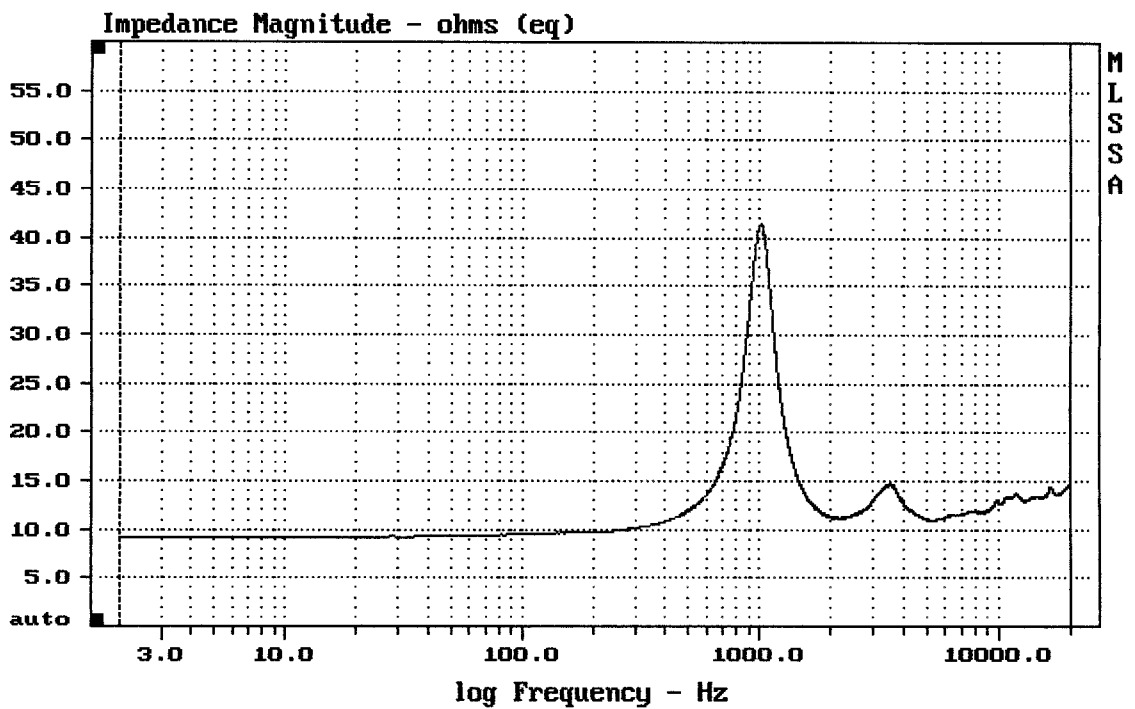
MLSSA: Frequency Domain



mean: 13.23, rms: 13.44, std: 2.375, max: 30.13, min: 8.877

ND1020 160HM + A7570

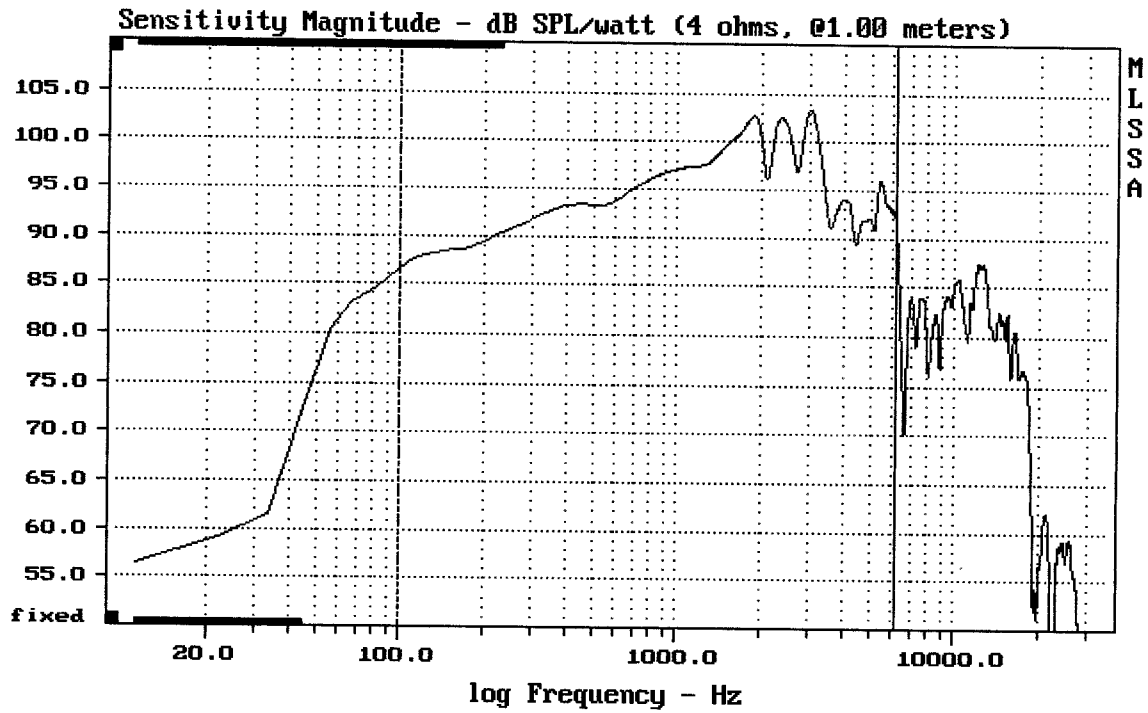
MLSSA: Frequency Domain



mean: 13.31, rms: 13.71, std: 3.292, max: 41.42, min: 9.119

ND1020

MLSSA: Frequency Domain

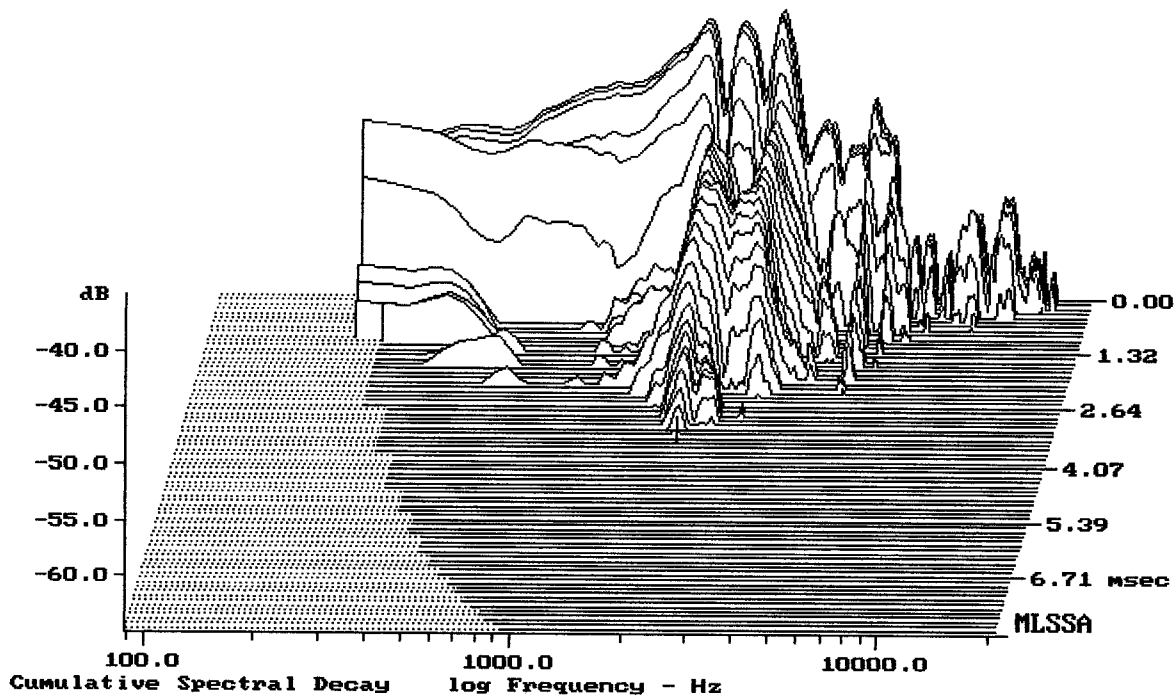


Level (100:6203 Hz) = 96.36 dB SPL/watt (4 ohms, @1.00 meters)

10" from VERSE INSIDER 10

4-24-93 7:33 PM

MLSSA: Frequency Domain



-64.58 dB, 1998 Hz (45), 3.300 msec (31)

DTTO

Measured Data

QC Limits

Line	Parameter	Value	Units
1	RMSE-free	0.63	Ohms
2	Fs	58.08	Hz
3	Re	3.24	Ohms[dc]
4	Res	158.07	Ohms
5	Qms	13.00	
6	Qes	0.27	
7	Qts	0.26	
8	L1	0.03	mH
9	L2	0.69	mH
10	R2	2.06	Ohms
11	RMSE-load	0.65	Ohms
12	Vas(Sd)	29.16	liters
13	Mms	47.67	grams
14	Cms	158	$\mu\text{M}/\text{Newton}$
15	B1	14.54	Tesla-M
16	SPLref(Sd)	95.1	dB[Re]
17	Rub-index	0.00	

Method: Mass-loaded (80.00 grams)

Area (Sd): 363.05 sq cm

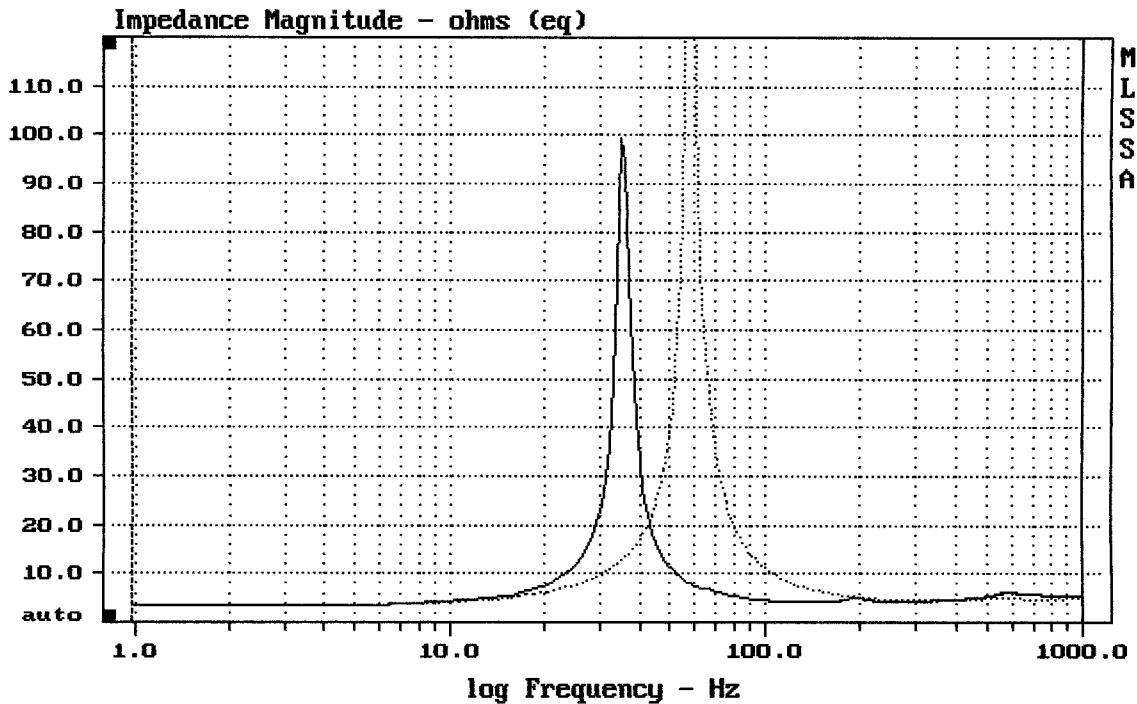
DCR mode: Measure (-0.11 ohms)

QC file: CLOSED

Analysis successful. Shift in Fs = -38.7% (-20% to -50% is recommended).

10" VERSE INSIDER 10

MLSSA: Parameters



mean: 7.233, rms: 14.22, std: 12.24, max: 161.3, min: 3.358

MLSSA: Frequency Domain