

**Sestava: RCF L15P530 + B&C Speakers DE250 + Megaton A7570**

Osazení:

- **RCF L15P530**

<http://eshop.prodance.cz/l15p530-8-ohm/d-80624/>

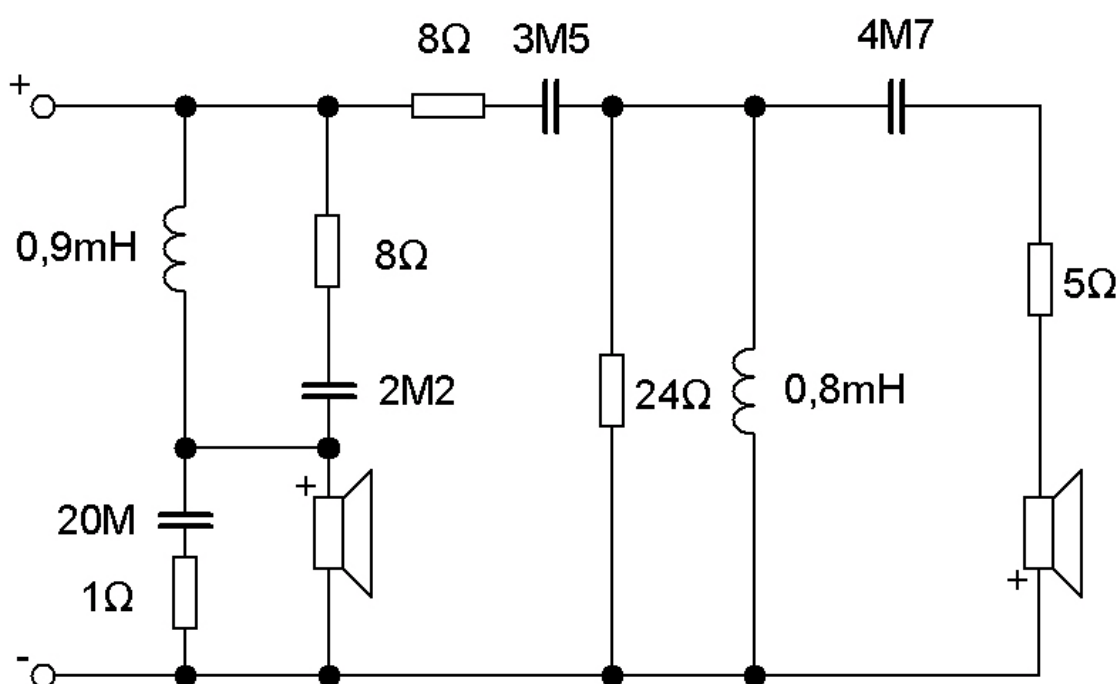
- **B&C Speakers DE250**

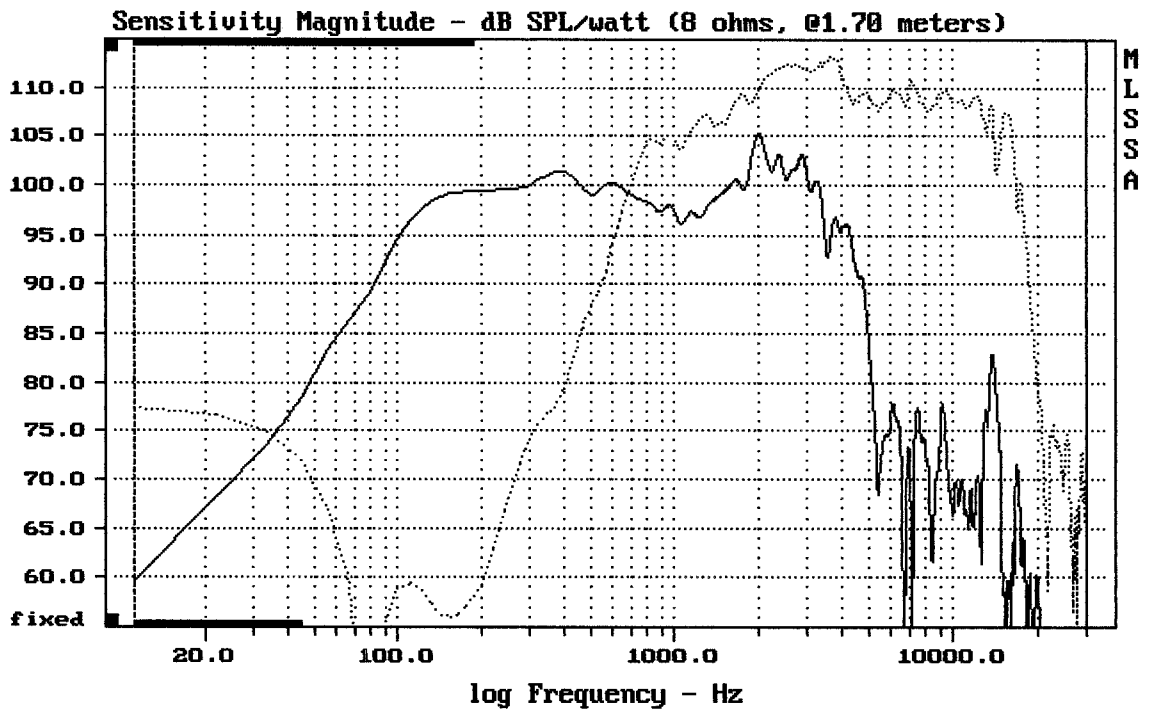
<http://eshop.prodance.cz/de250-8-ohm/d-82306/>

- **Megaton A7570**

<http://eshop.prodance.cz/a7570-zvukovod/d-83912/>

Schéma výhybky:





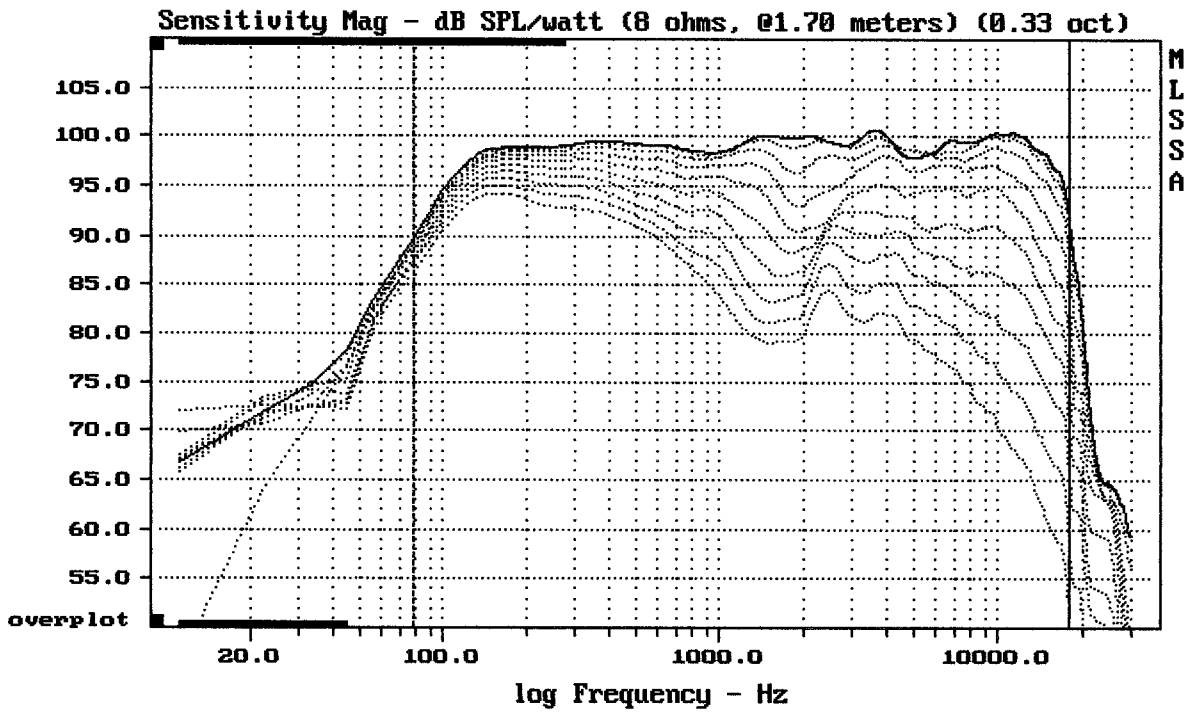

---

CURSOR: dy = 19.5747 x = 30007.1014 (2704)

---

L15P530 + DE250 + A7570

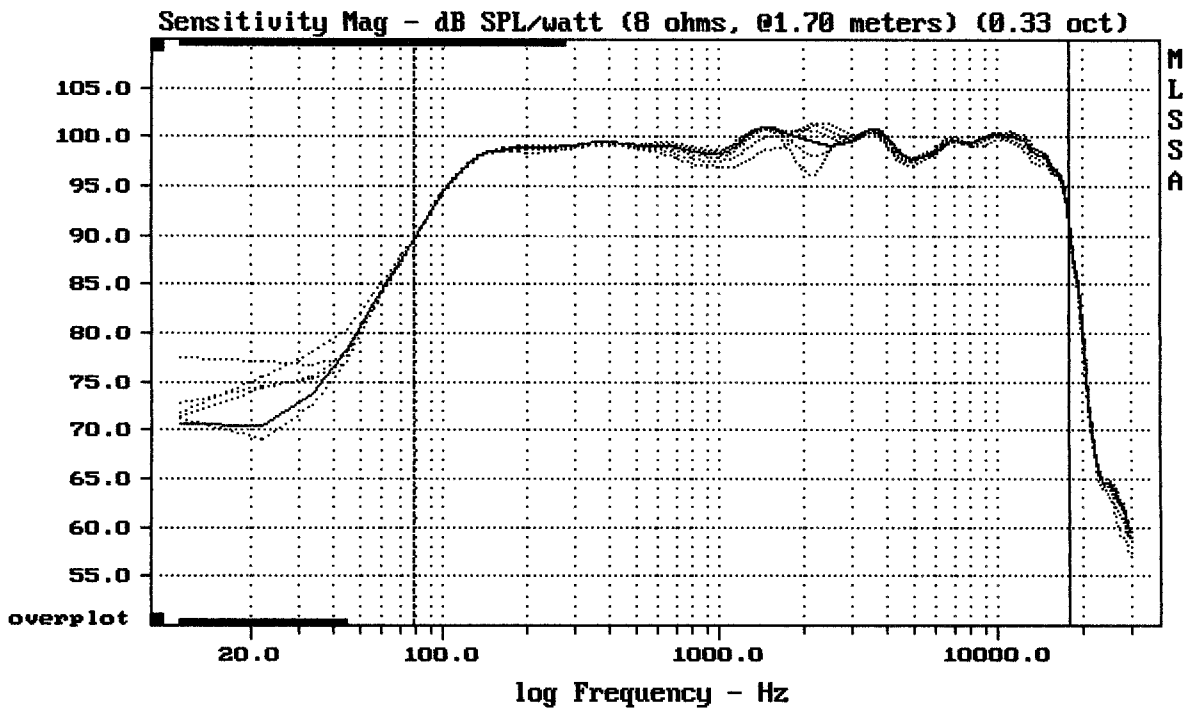
MLSSA: Frequency Domain



Overlay Compare: dev= +24/-13, std= 8.5, avg= -27

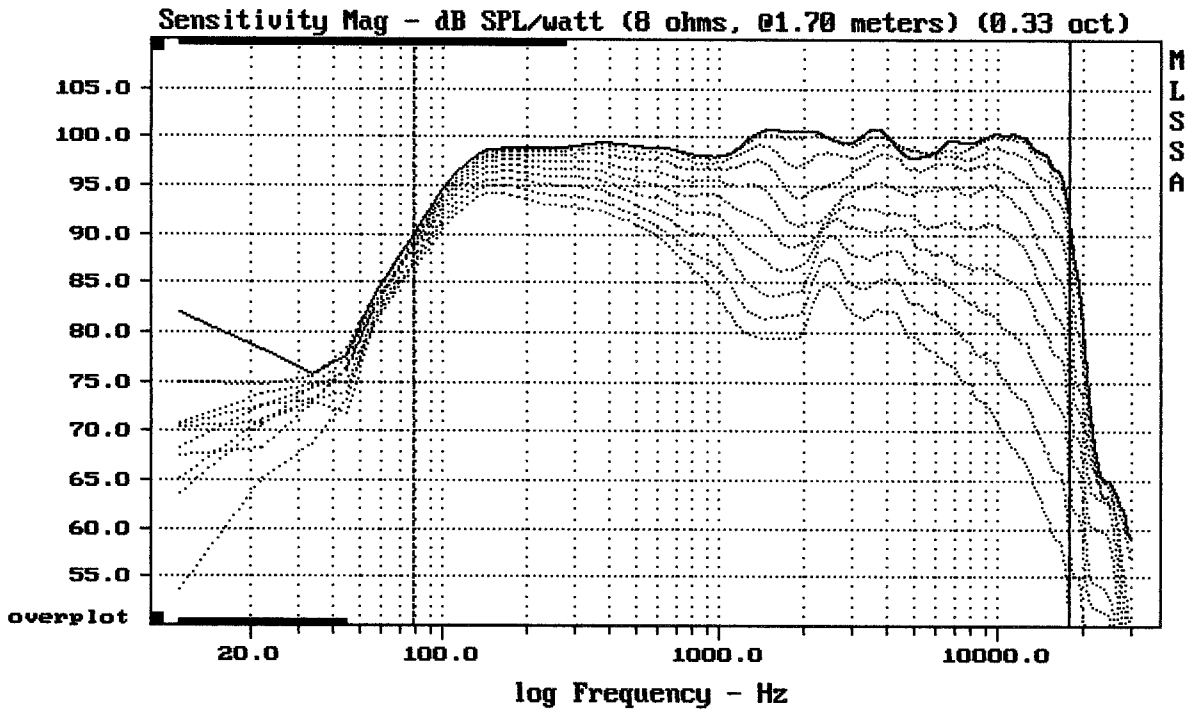
L15P530 + DE250 + A7570

MLSSA: Frequency Domain



mean: 98.87, rms: 99.03, std: 1.51, max: 101.39, min: 89.33

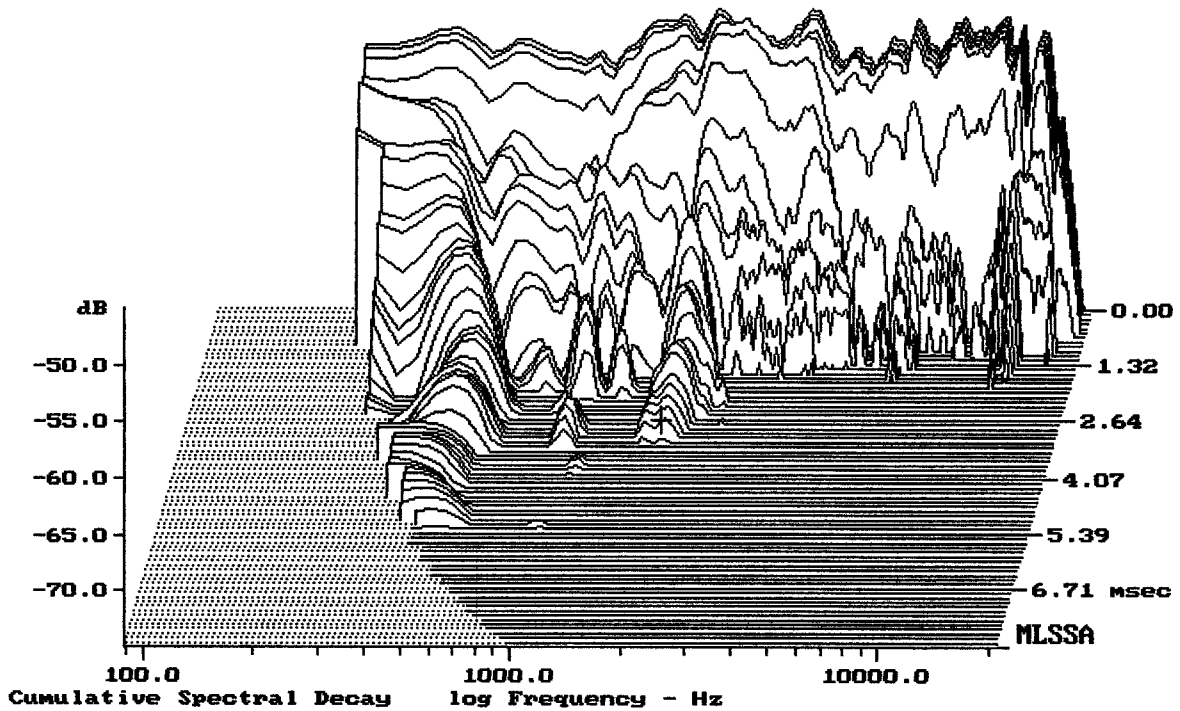
L15P530 + DE250 + A7570



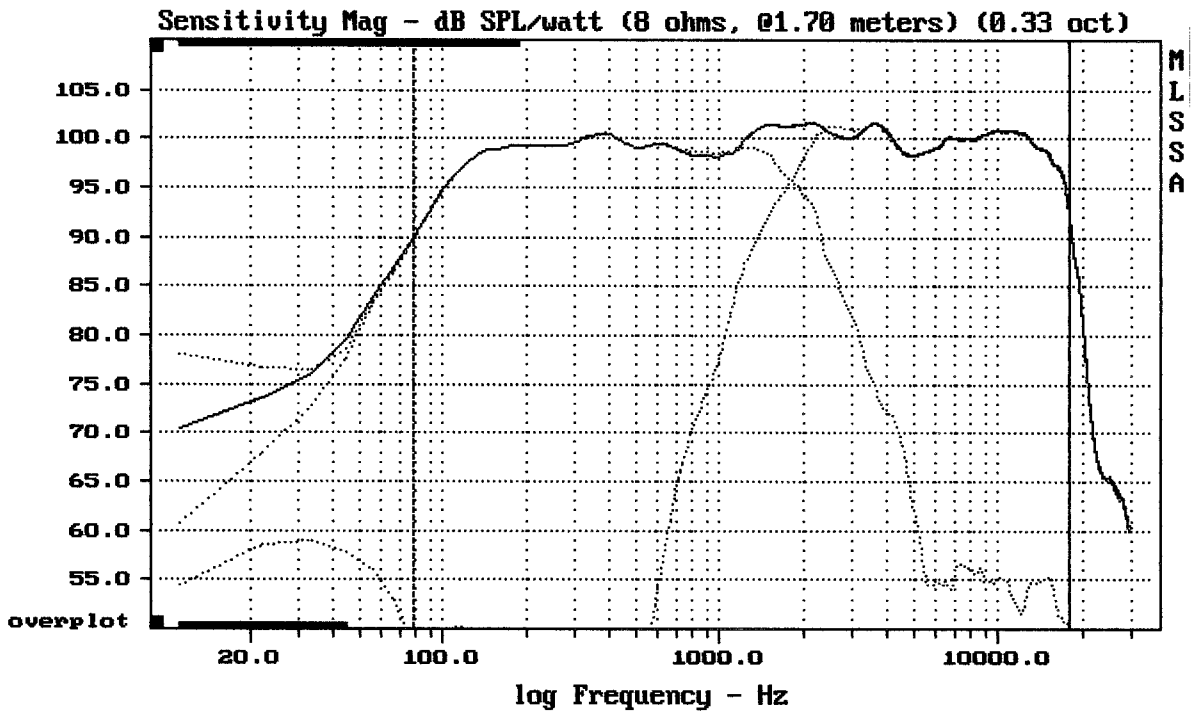
Overlay Compare: dev= +23/-14, std= 8.5, avg= -27

L15P530 + DE250 + A7570

MLSSA: Frequency Domain



-73.44 dB, 1776 Hz (40), 3.000 msec (29)



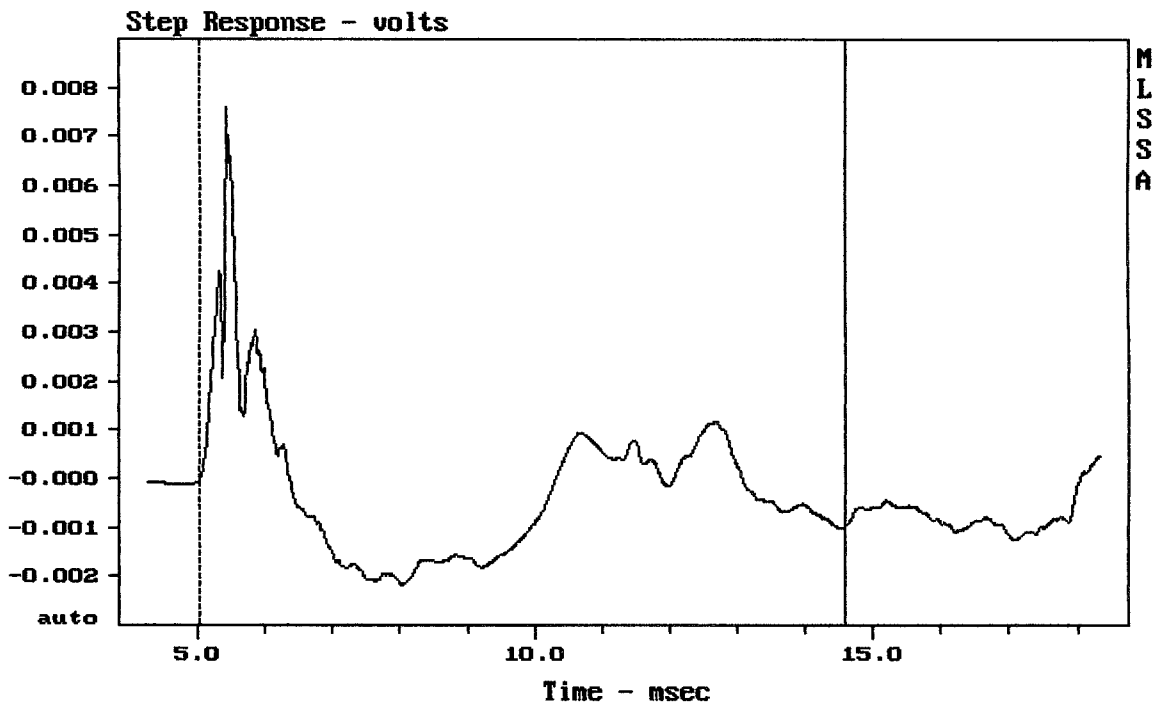

---

Level (78:18011 Hz) = 99.48 dB SPL/watt (8 ohms, @1.70 meters) (0.33 oct)

---

L15P530 + DE250 + A7570

MLSSA: Frequency Domain

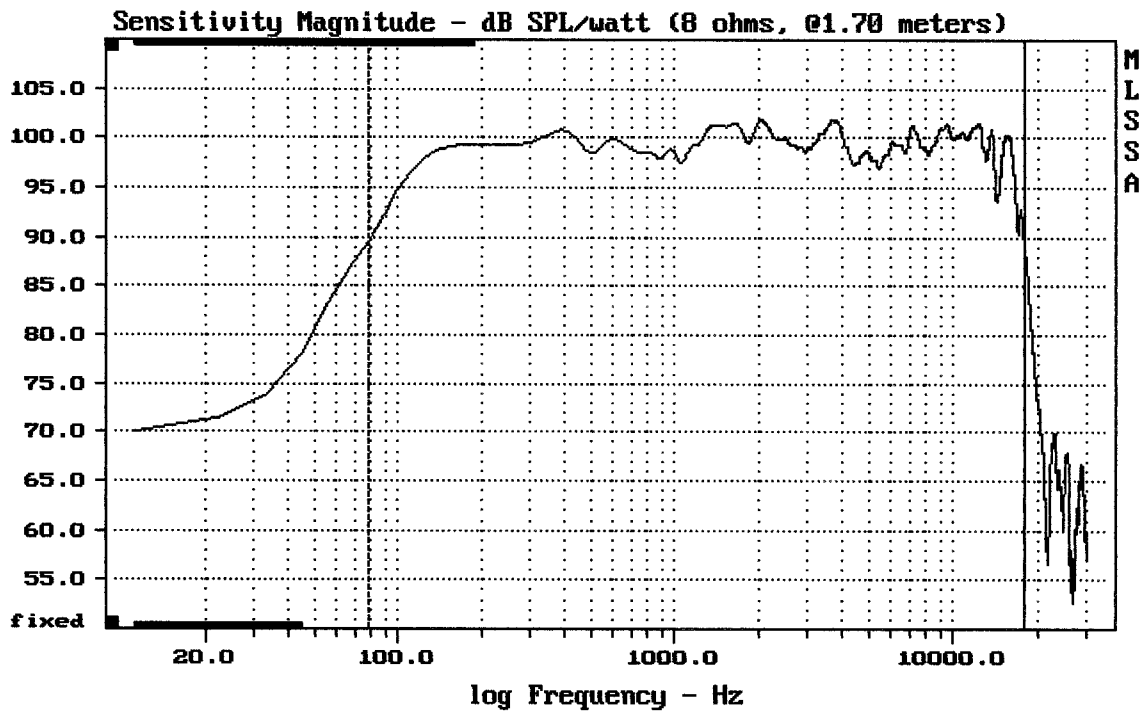



---

mean: -0.000232, rms: 0.001537, std: 0.001519, max: 0.007606, min: -0.002166

---

L15P530 + DE250 + A7570



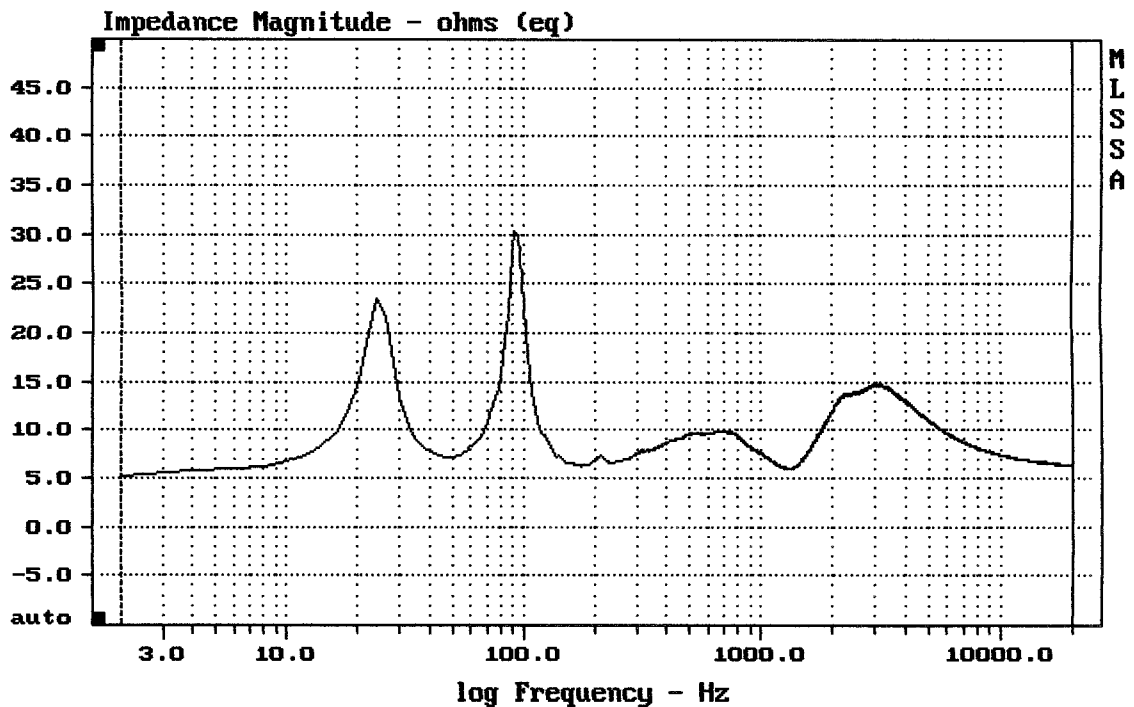

---

mean: 99.10, rms: 99.33, std: 1.85, max: 101.82, min: 88.83

---

L15P530 + DE250 + A7570

MLSSA: Frequency Domain




---

mean: 8.363, rms: 8.724, std: 2.484, max: 30.41, min: 5.276

---

L15P530 + DE250 + A7570