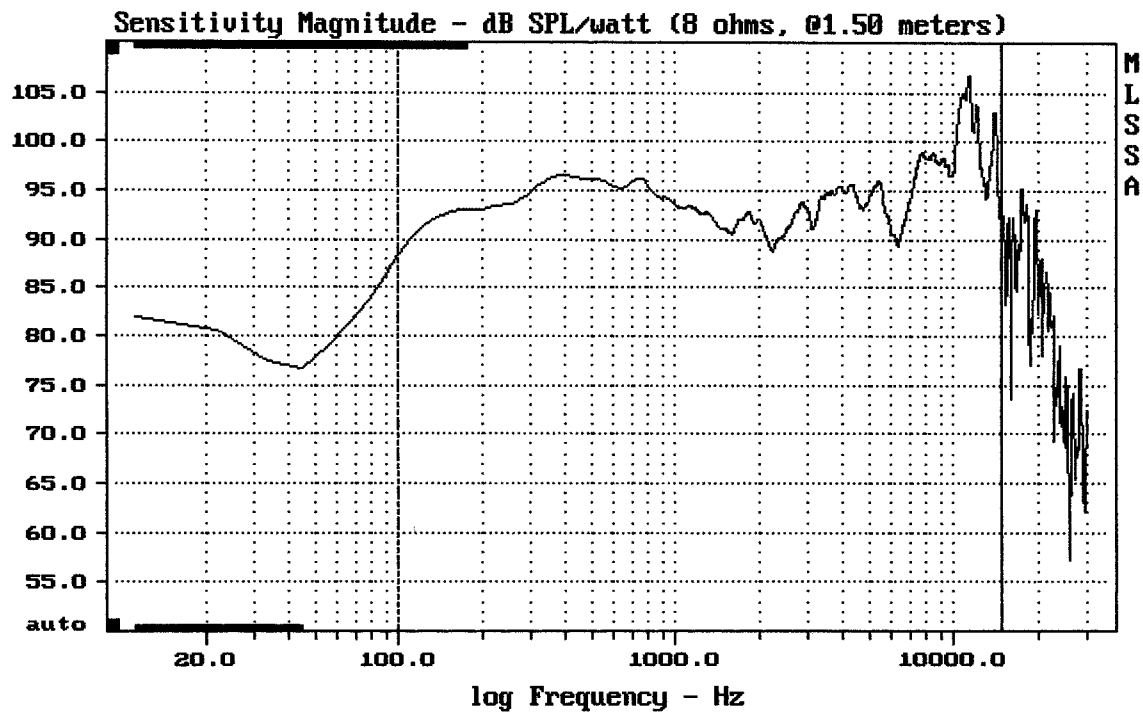


E-shop:

QSC AP-5102

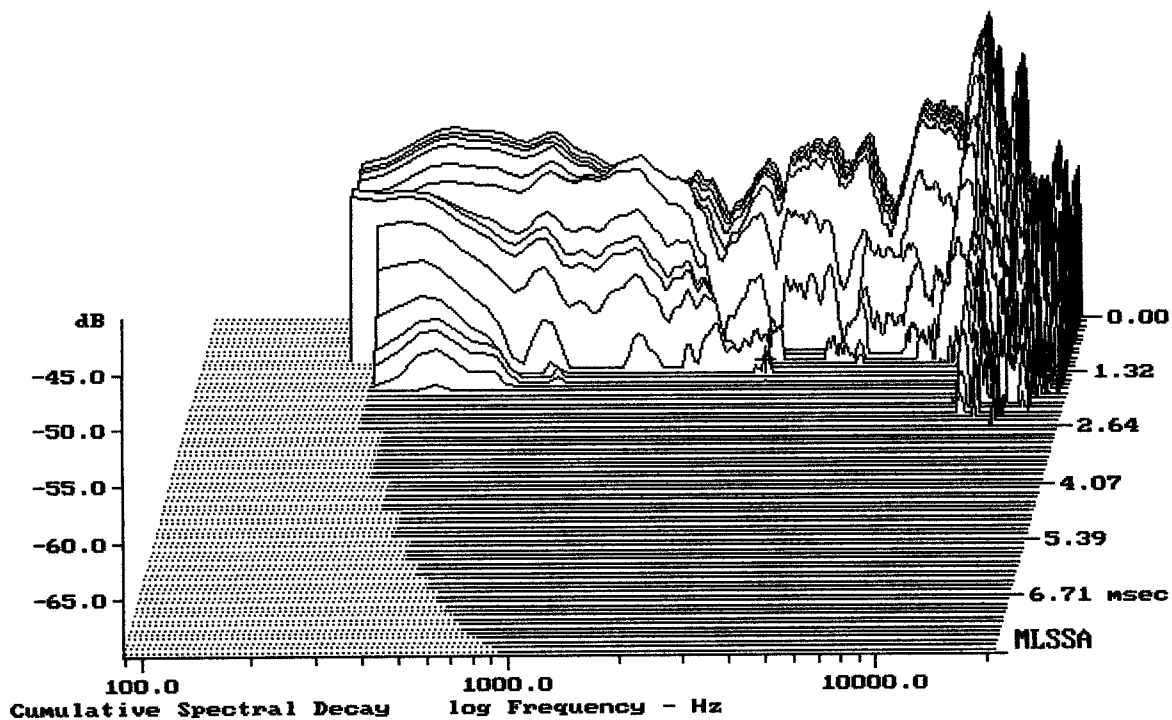
<http://eshop.prodance.cz/ap5102/d-97816/>



Level (100:14815 Hz) = 95.68 dB SPL/watt (8 ohms, @1.50 meters)

QSC AP-5102

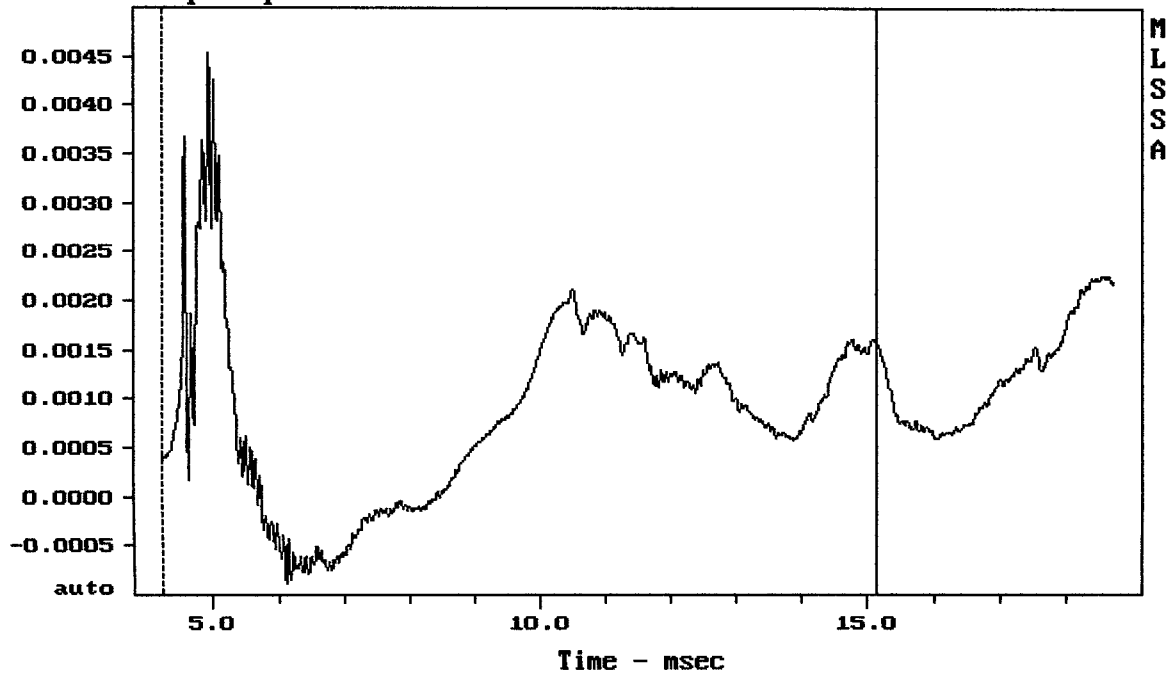
MLSSA: Frequency Domain



-70.00 dB, 2974 Hz (67), 0.990 msec (10)

DTTO

Step Response - volts

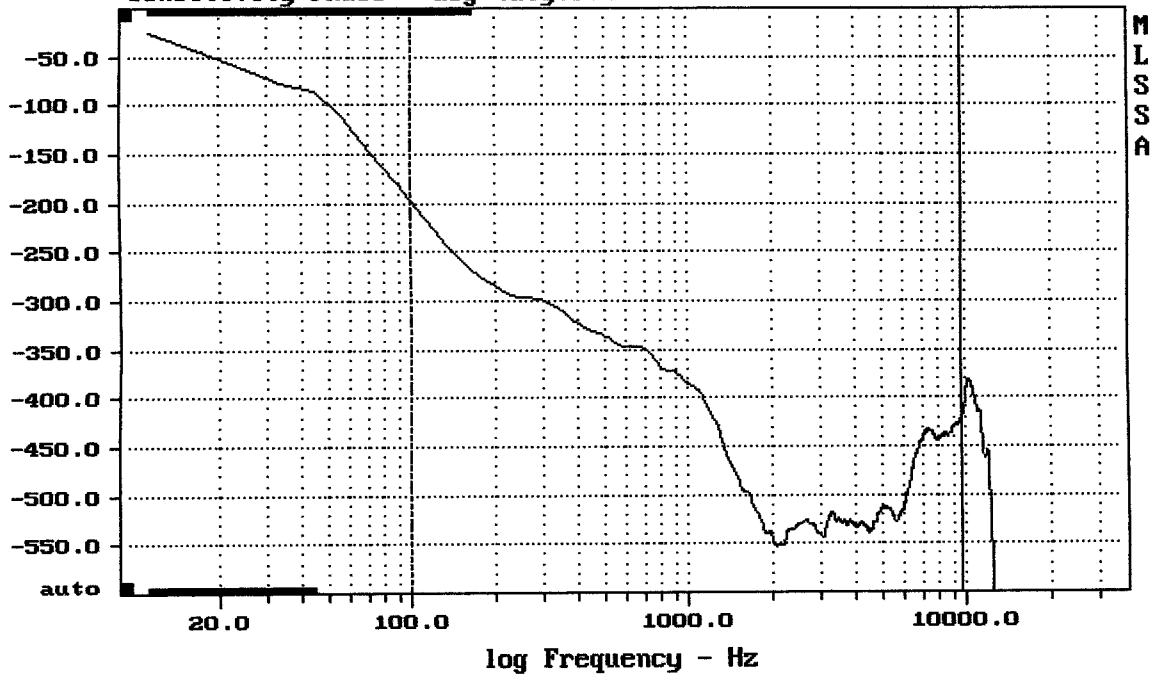


CURSOR: y = 0.00156191 x = 15.1470 (1377)

QSC AP-5102

MLSSA: Time Domain

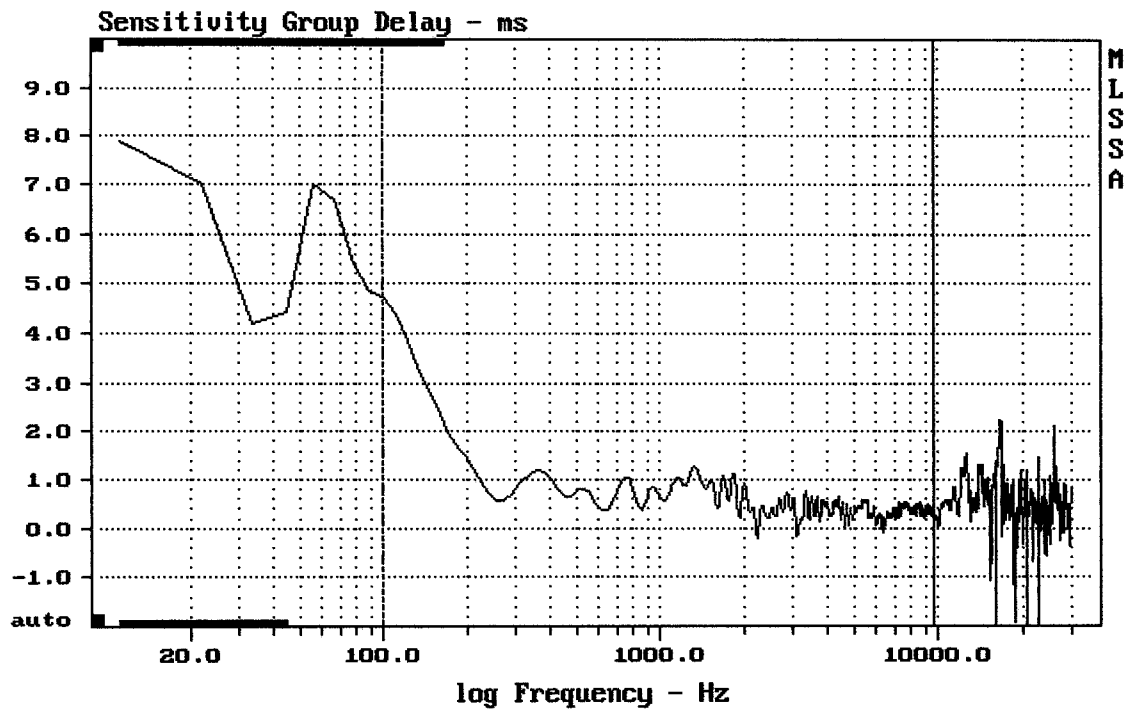
Sensitivity Phase - deg (dly:0.41 ms)



mean: -471.8, rms: 476.2, std: 64.11, max: -196.5, min: -552.5

QSC AP-5102

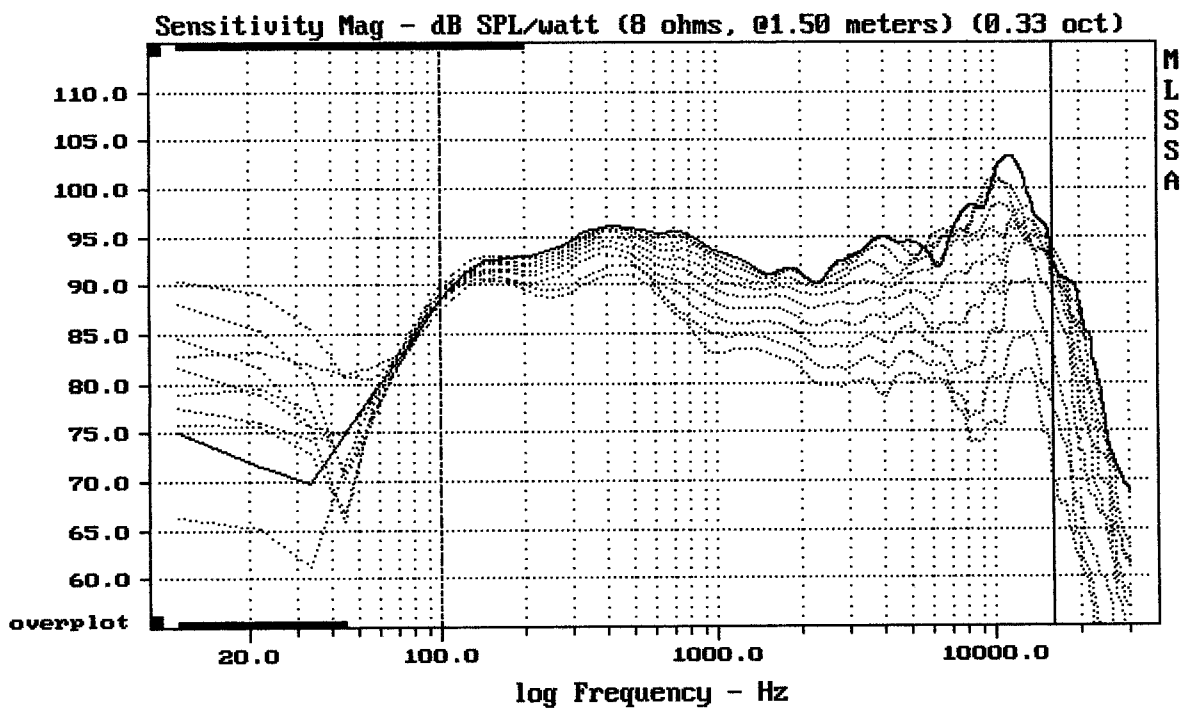
MLSSA: Frequency Domain



mean: 0.4749, rms: 0.6073, std: 0.3785, max: 4.752, min: -0.193

QSC AP-5102

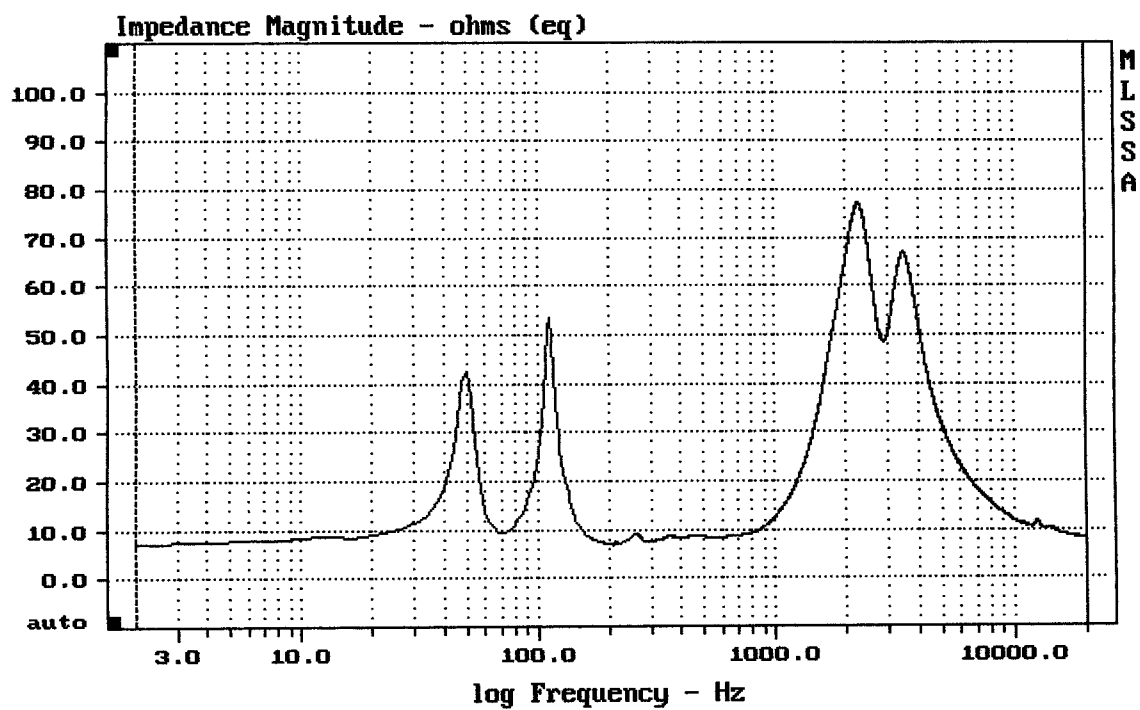
MLSSA: Frequency Domain



Overlay Compare: dev= +17/-9.8, std= 5.8, avg= -17

QSC AP-5102

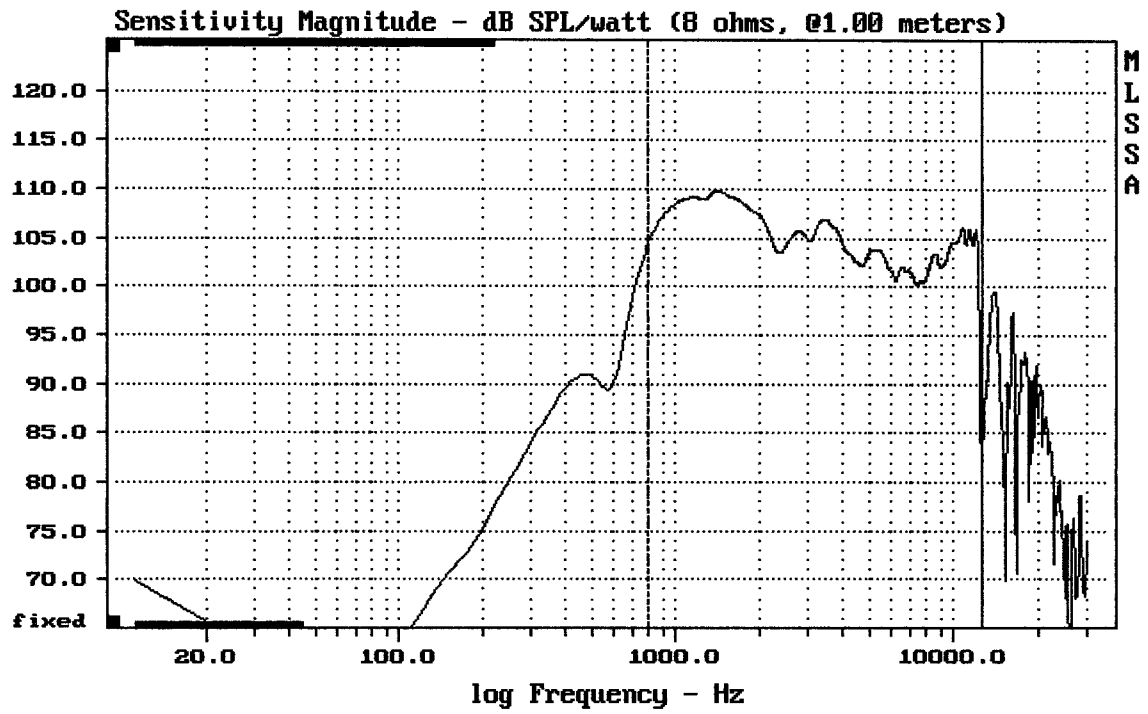
MLSSA: Frequency Domain



mean: 19.93, rms: 26.37, std: 17.27, max: 77.33, min: 6.923

QSC AP-5102

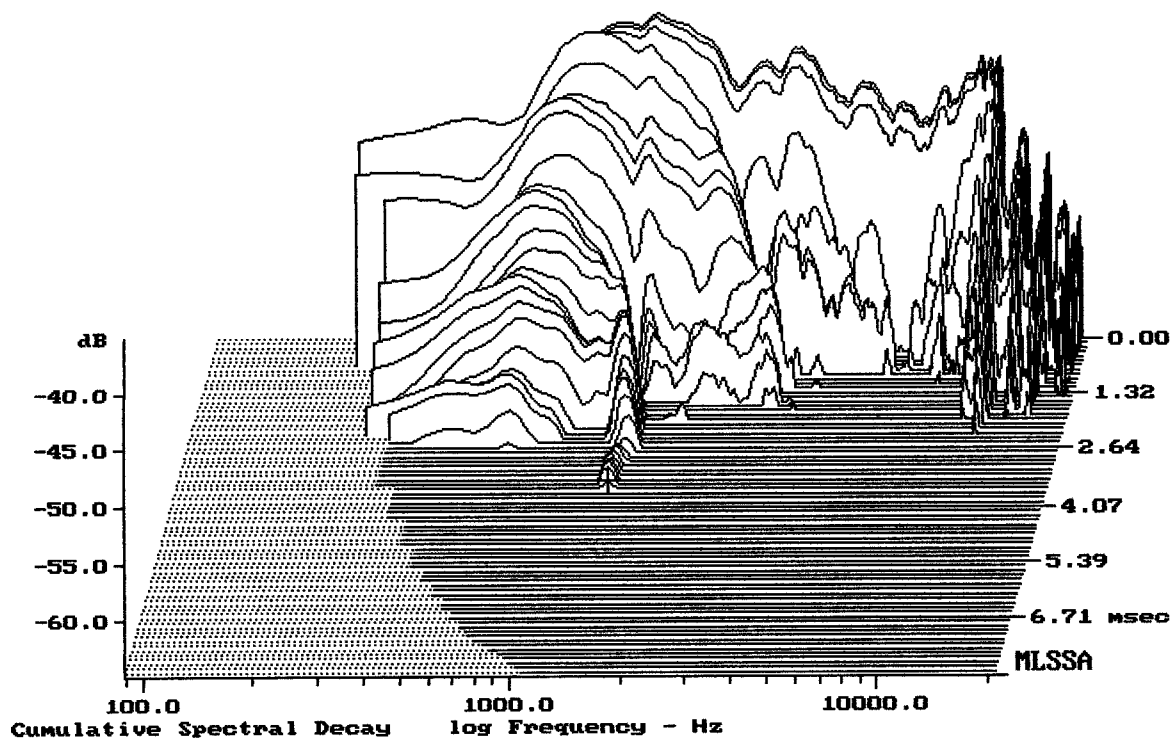
MLSSA: Frequency Domain



Level (799:12684 Hz) = 106.18 dB SPL/watt (8 ohms, @1.00 meters)

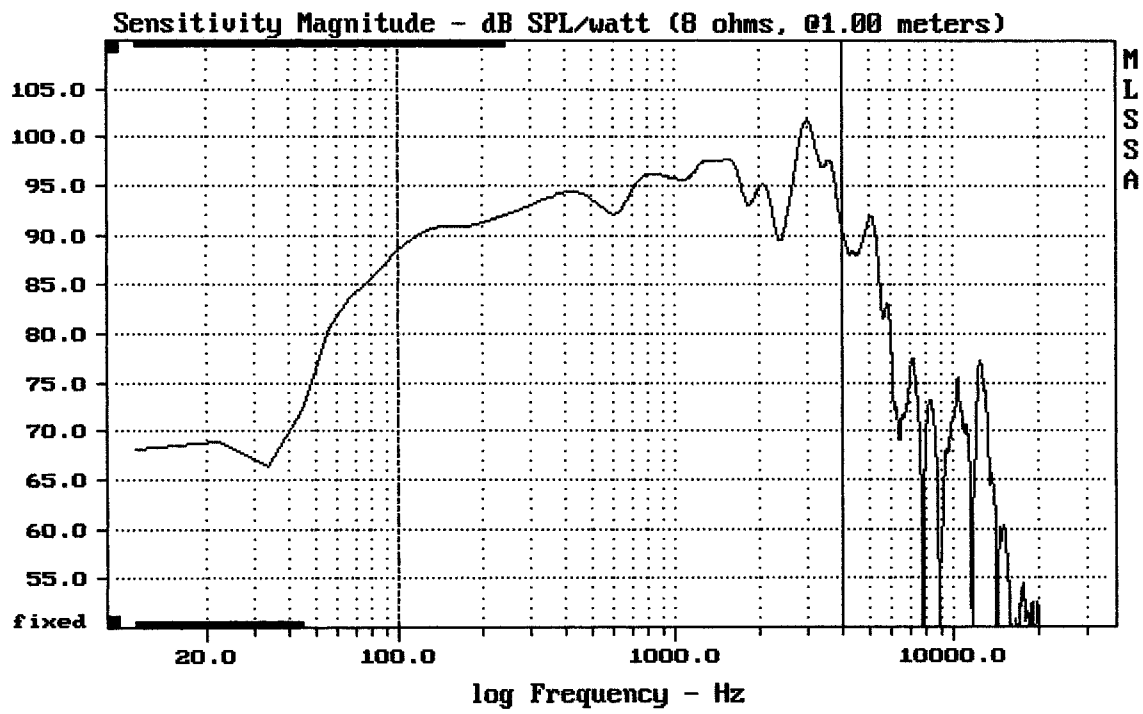
1.4" from QSC AP-5102

MLSSA: Frequency Domain



-64.31 dB, 1332 Hz (30), 3.630 msec (34)

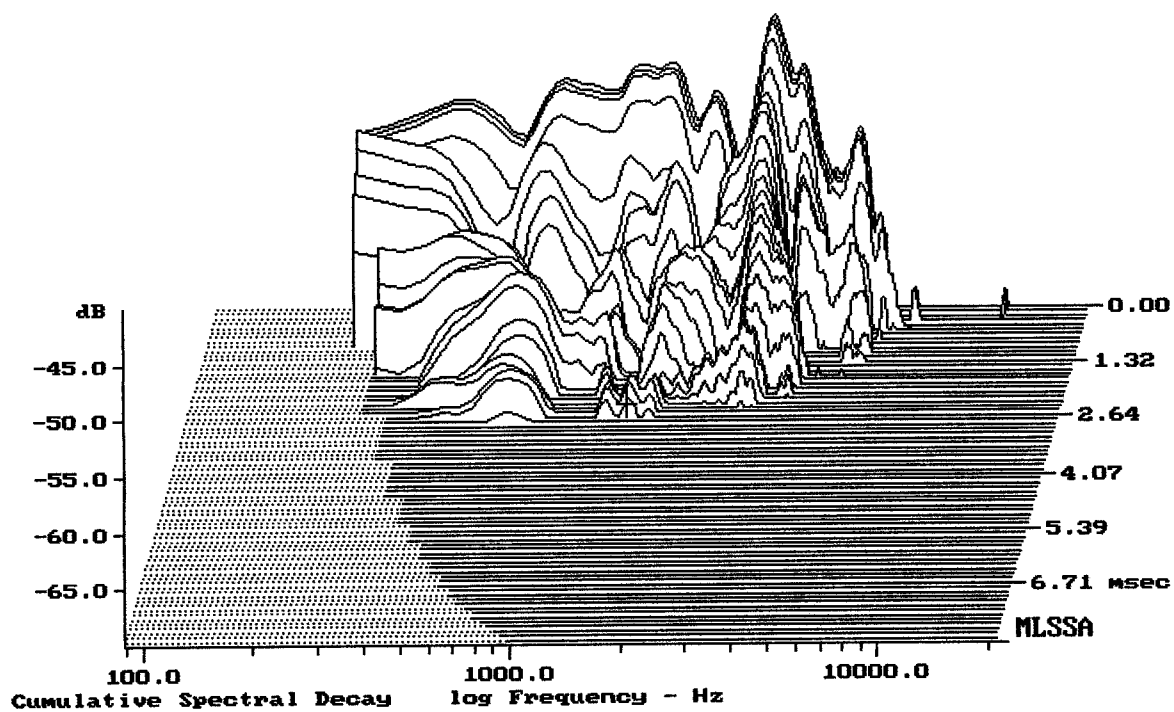
DTTO



Level (100:4028 Hz) = 94.83 dB SPL/watt (8 ohms, @1.00 meters)

10" from QSC AP-5102

MLSSA: Frequency Domain



-70.00 dB, 1376 Hz (31), 2.310 msec (22)

DT10

Measured Data

QC Limits

Line	Parameter	Value	Units
1	RMSE-free	1.10	Ohms
2	Fs	86.76	Hz
3	Re	6.80	Ohms[dc]
4	Res	116.73	Ohms
5	Qms	8.89	
6	Qes	0.52	
7	Qts	0.49	
8	L1	0.20	mH
9	L2	2.25	mH
10	R2	7.95	Ohms
11	RMSE-load	0.89	Ohms
12	Vas(Sd)	17.50	liters
13	Mms	32.40	grams
14	Cms	104	μ M/Newton
15	Bl	15.23	Tesla-M
16	SPLref(Sd)	95.3	dB[Re]
17	Rub-index	0.00	

Method: Mass-loaded (40.00 grams)

Area (Sd): 346.36 sq cm

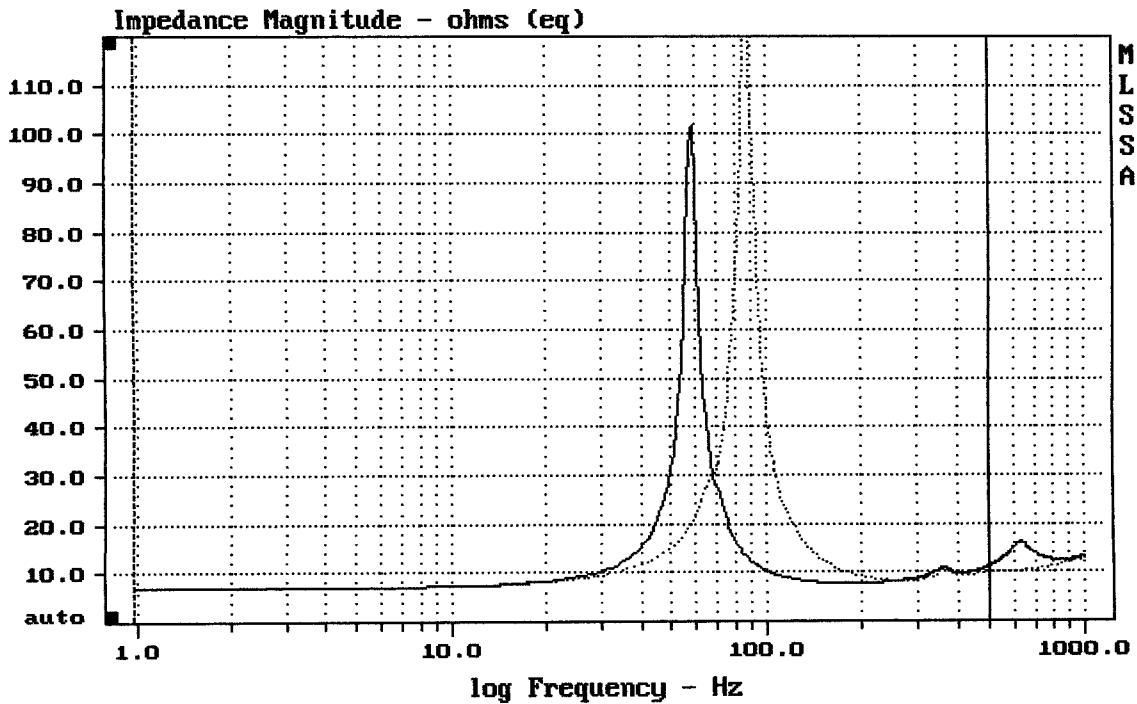
DCR mode: Measure (-0.14 ohms)

QC file: CLOSED

Analysis successful. Shift in Fs = -33.1% (-20% to -50% is recommended).

10" FROM AP-5102

MLSSA: Parameters



mean: 14.89, rms: 22.65, std: 17.06, max: 124.1, min: 6.947

DTTO

MLSSA: Frequency Domain