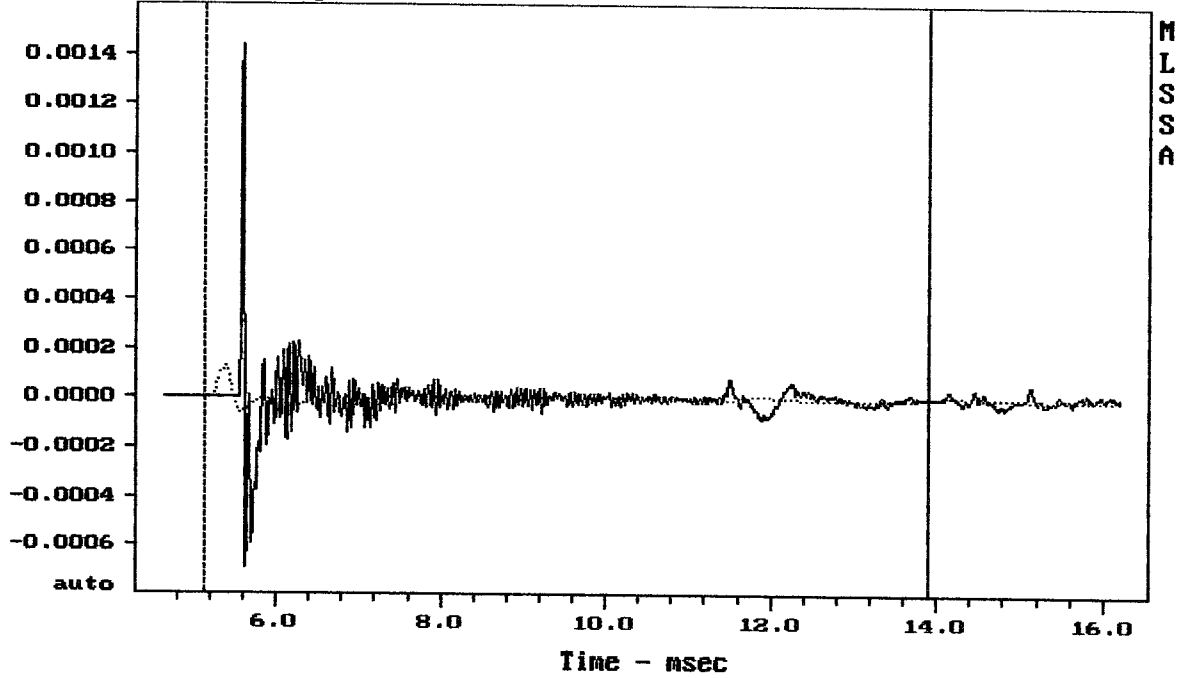


**E-shop:**

Megaton – NDM152e

<http://eshop.prodance.cz/ndm152e-lak/d-97812/>

Impulse Response - volts

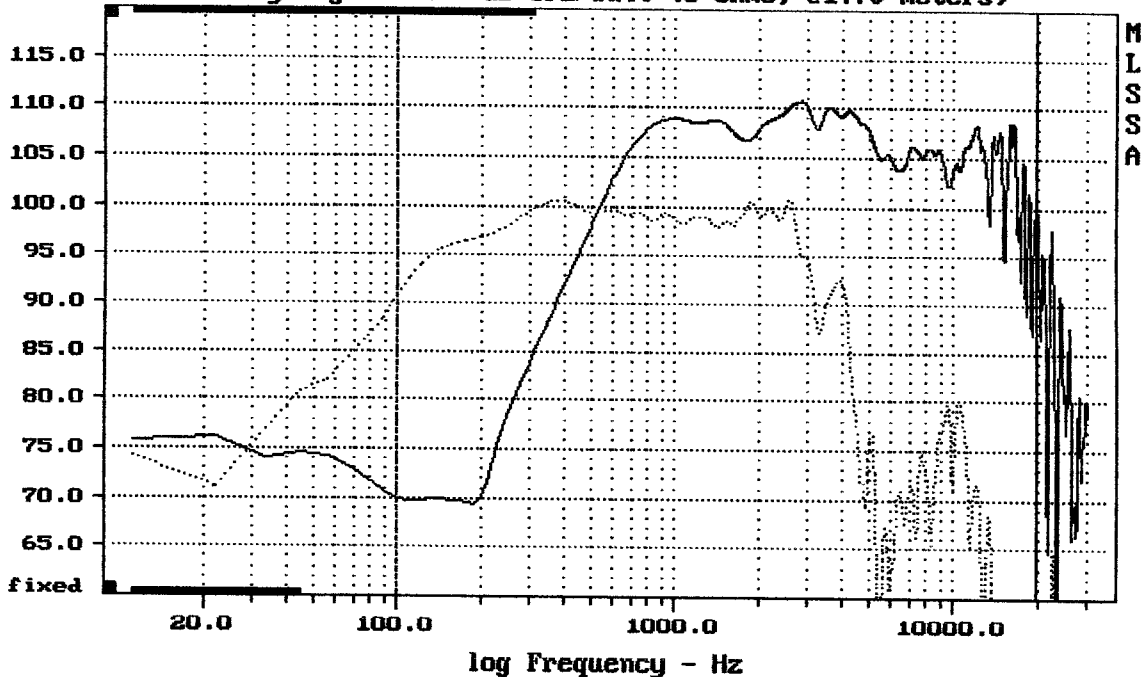


CURSOR:  $dy = -6.3701e-006$   $x = 13.8930$  (1263)

NDM152+15NW76+DE620+B8575

MLSSA: Time Domain

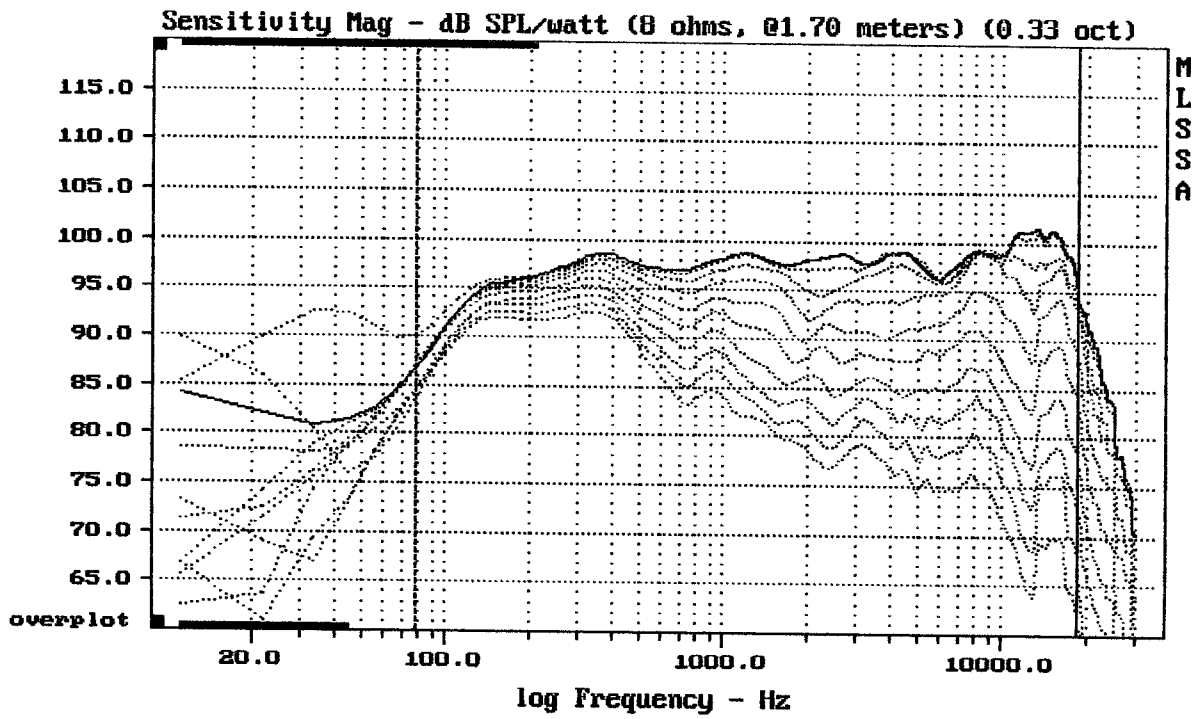
Sensitivity Magnitude - dB SPL/watt (8 ohms, 01.70 meters)



CURSOR:  $dy = -51.5747$   $x = 19908.5576$  (1794)

NDM152+15NW76+DE620+B8575

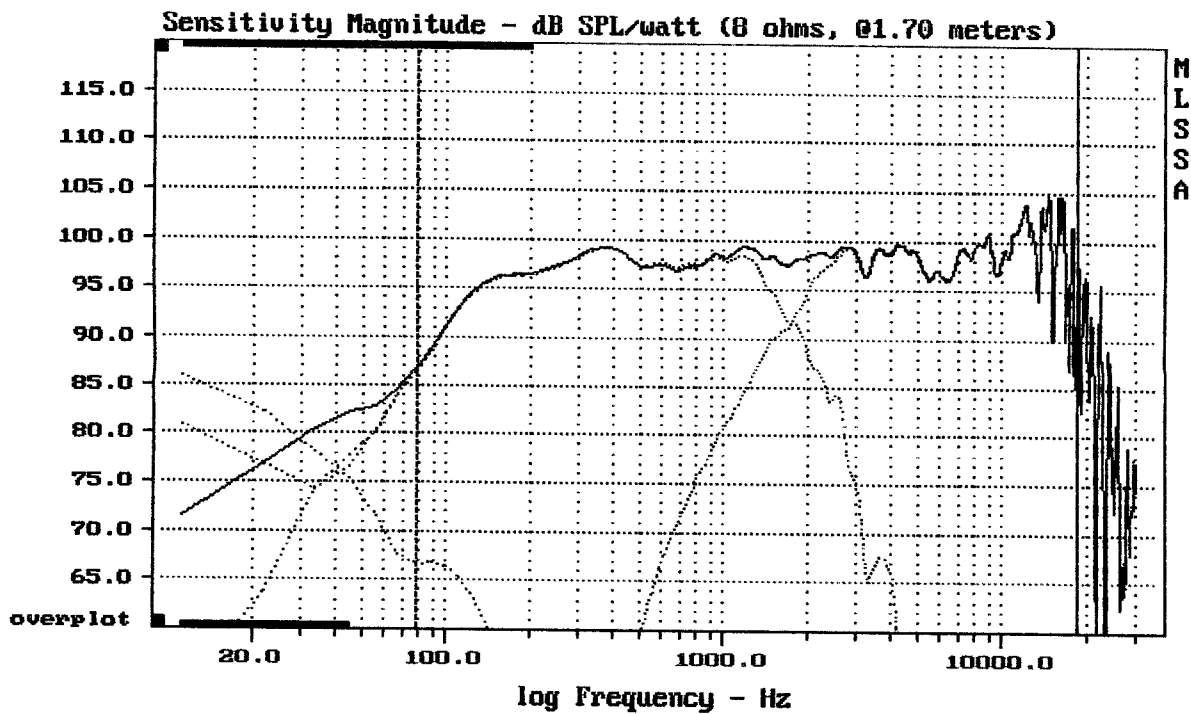
MLSSA: Frequency Domain



mean: 75.22, rms: 78.34, std: 6.13, max: 92.60, min: 61.08

NDM152+15NW76+DE620+B8575

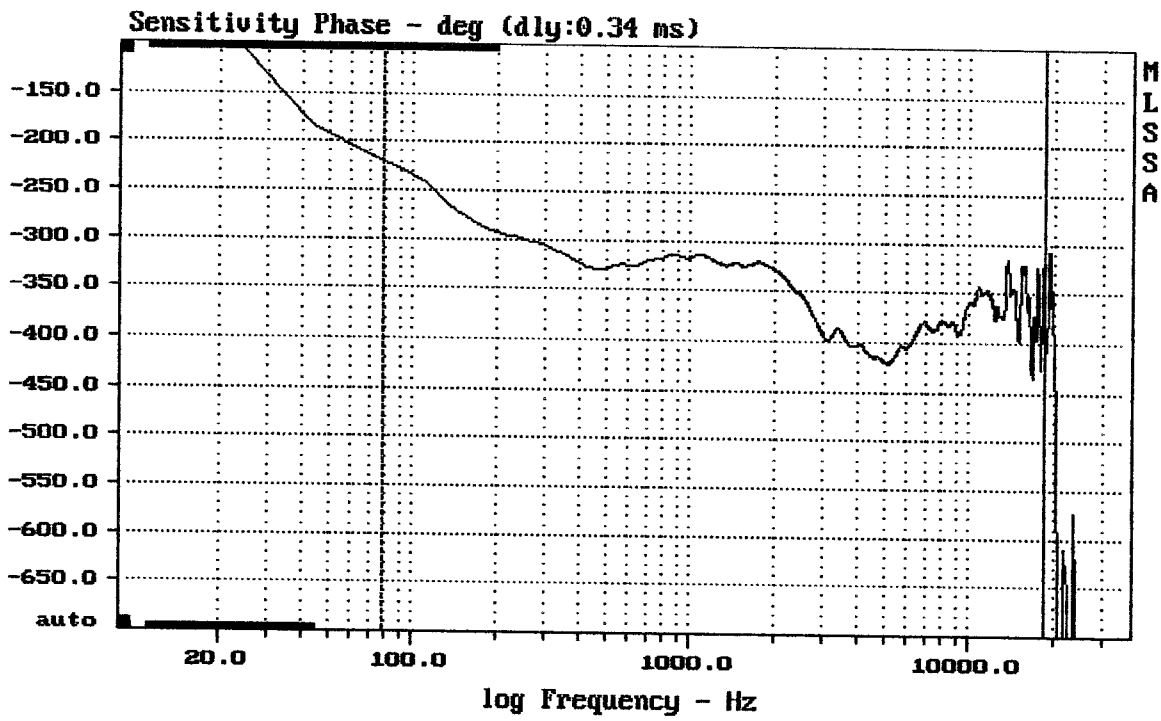
MLSSA: Frequency Domain



Level (78:18621 Hz) = 98.10 dB SPL/watt (8 ohms, @1.70 meters)

NDM152+15NW76+DE620+B8575

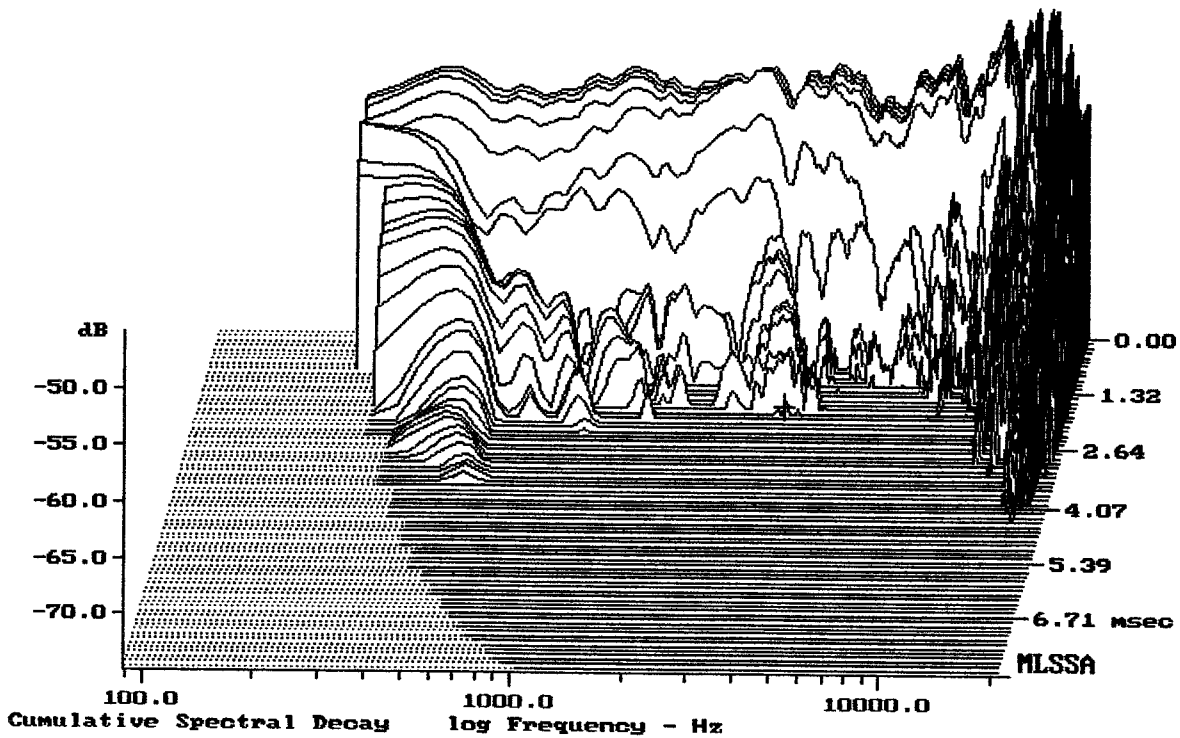
MLSSA: Frequency Domain



CURSOR: y = -352.094 x = 18621.2707 (1678)

NDM152+15NW76+DE620+B8575

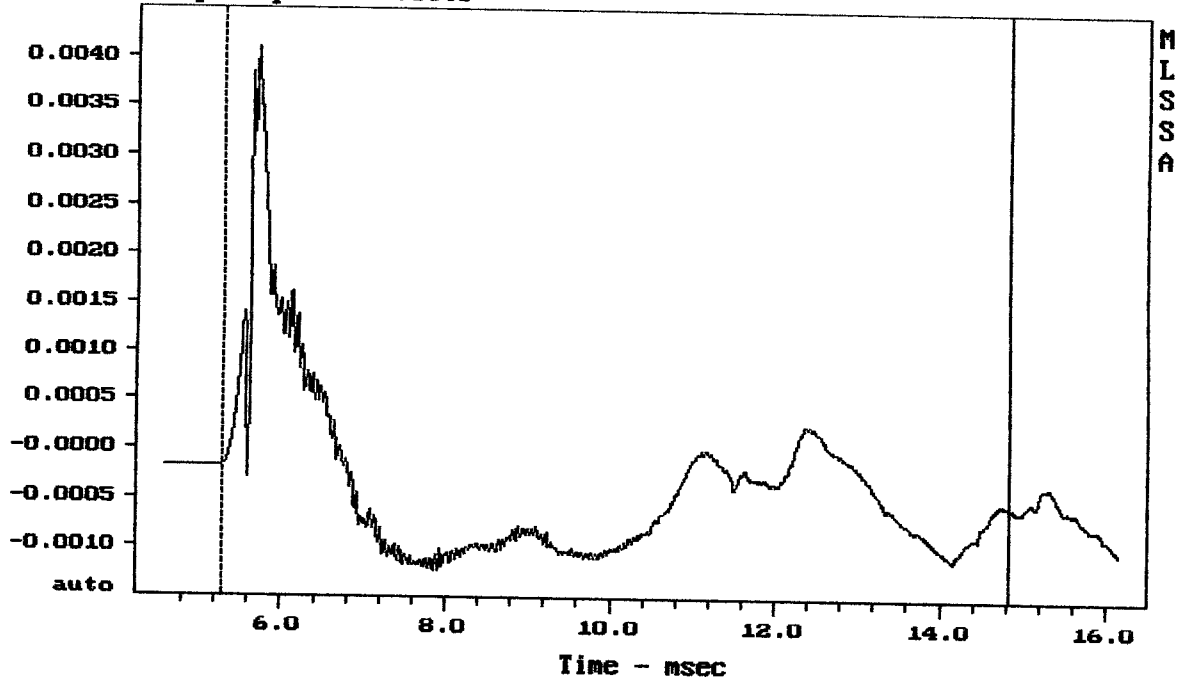
MLSSA: Frequency Domain



-74.37 dB, 3462 Hz (78), 1.870 msec (18)

DTTO

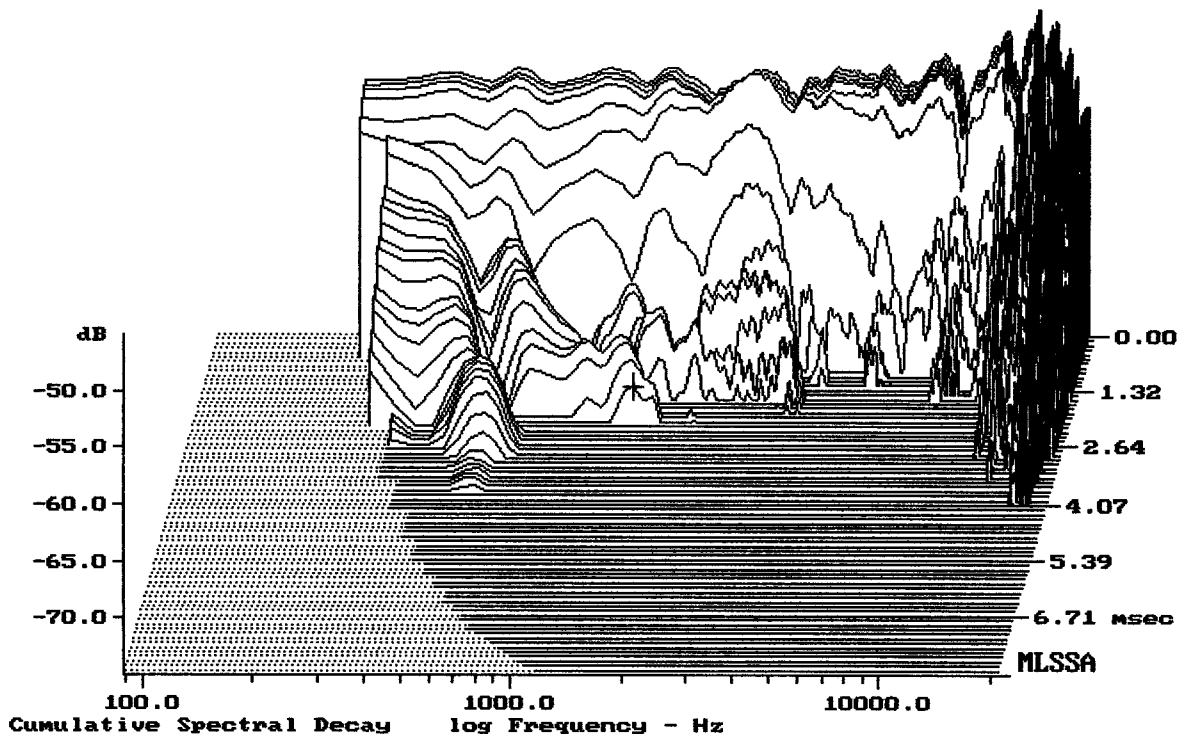
Step Response - volts



CURSOR: y = -0.000535998 x = 14.8170 (1347)

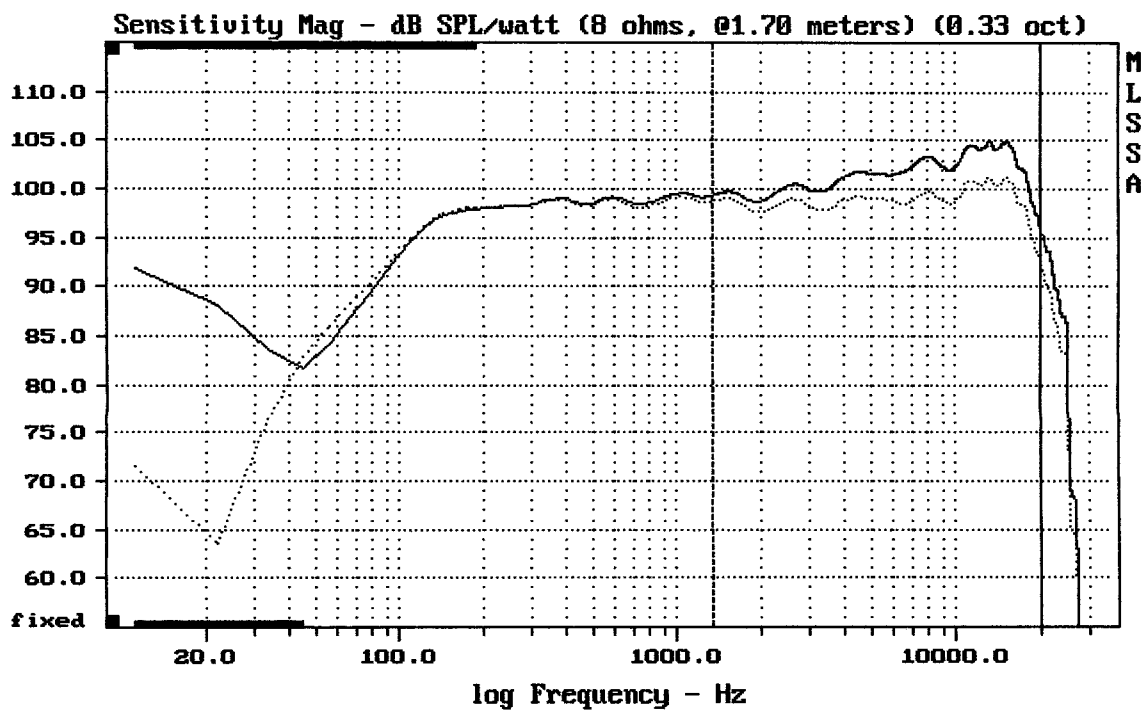
NDM152+15NW76+DE620+BB575

MLSSA: Time Domain



-71.86 dB, 1376 Hz (31), 2.090 msec (20)

Megaton NDM152e + Protea set-up NEAR

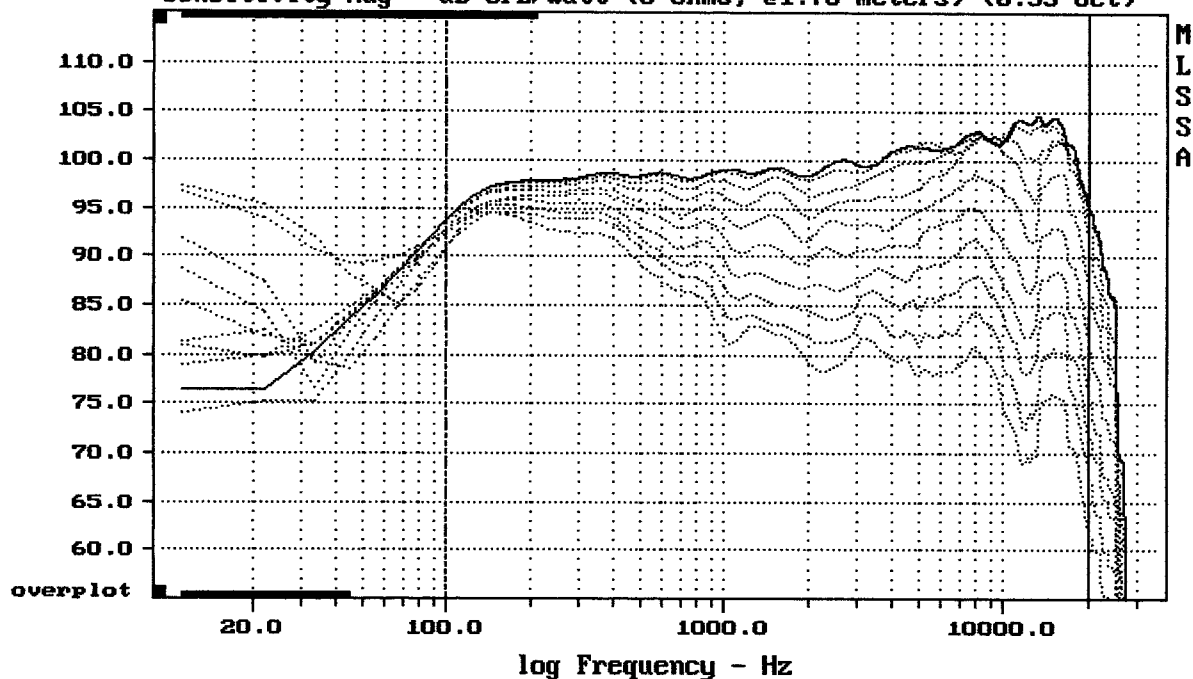


Overlay Compare: dev= +0.48/-2.6, std= 0.78, avg= 3.2

Megaton NDM152e + Protea set-up NEAR ... / 15m ---

MLSSA: Frequency Domain

Sensitivity Mag - dB SPL/watt (8 ohms, @1.70 meters) (0.33 oct)

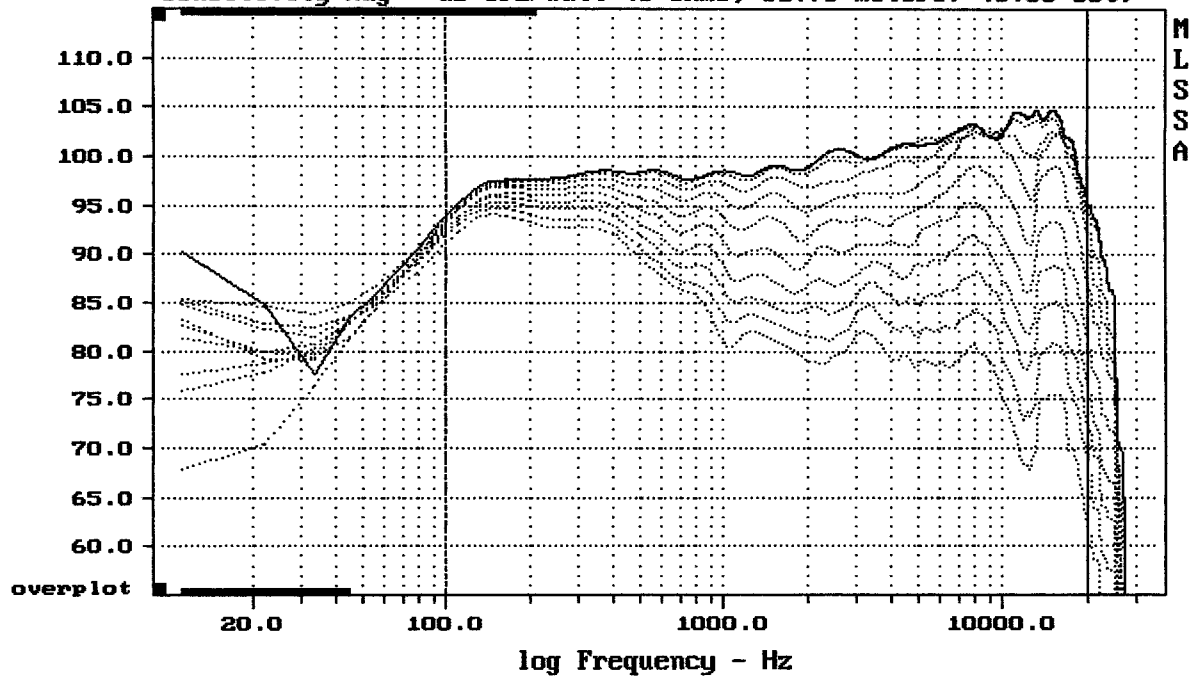


Overlay Compare: dev= +25/-9.7, std= 6.2, avg= -26

Megaton NDM152e horizontalni smerovost, mic mezi 1.4" a 15"

MLSSA: Frequency Domain

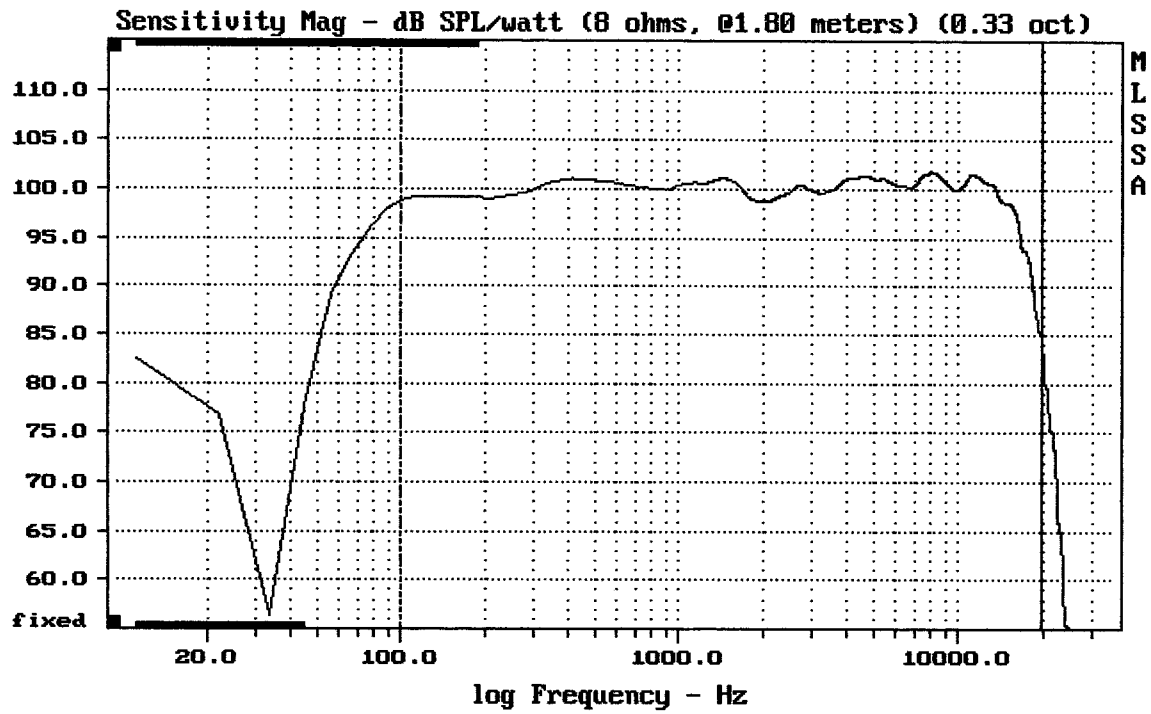
Sensitivity Mag - dB SPL/watt (8 ohms, @1.70 meters) (0.33 oct)



Overlay Compare: dev= +23/-10, std= 6.4, avg= -26

DTTO mic proti horne

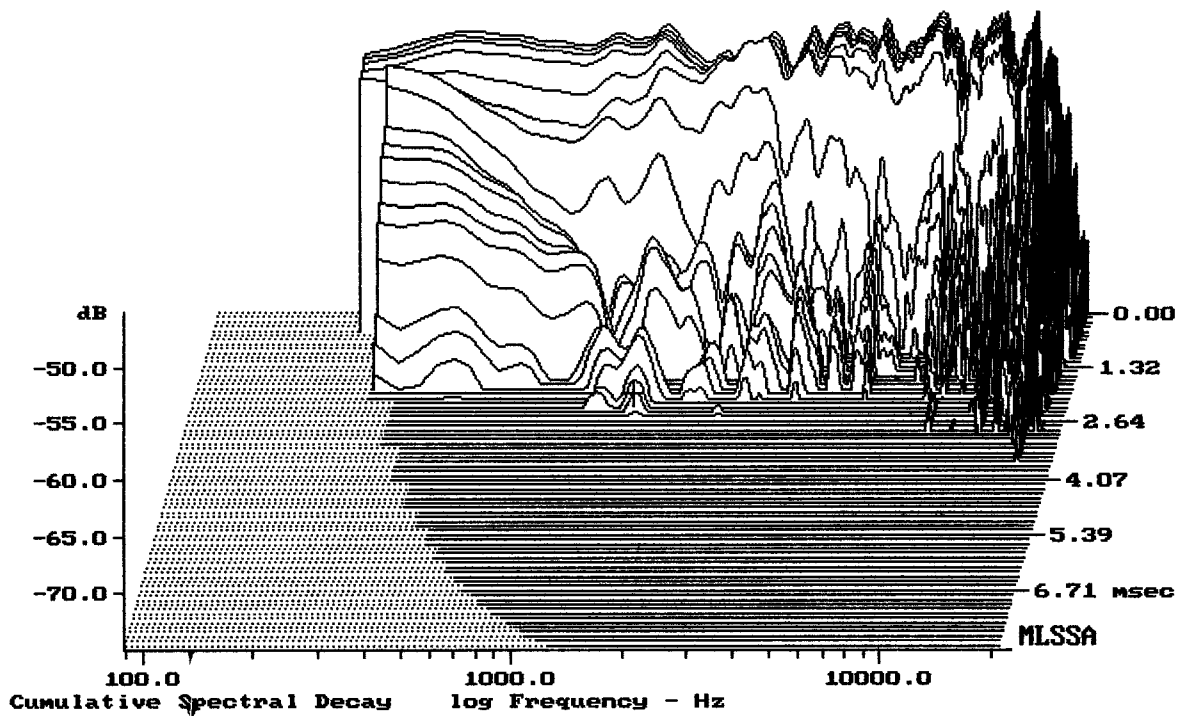
MLSSA: Frequency Domain



CURSOR: y = 84.3581 x = 19797.5846 (1784)

Megaton NDM152e na zemi + Protea set-up monitor

MLSSA: Frequency Domain

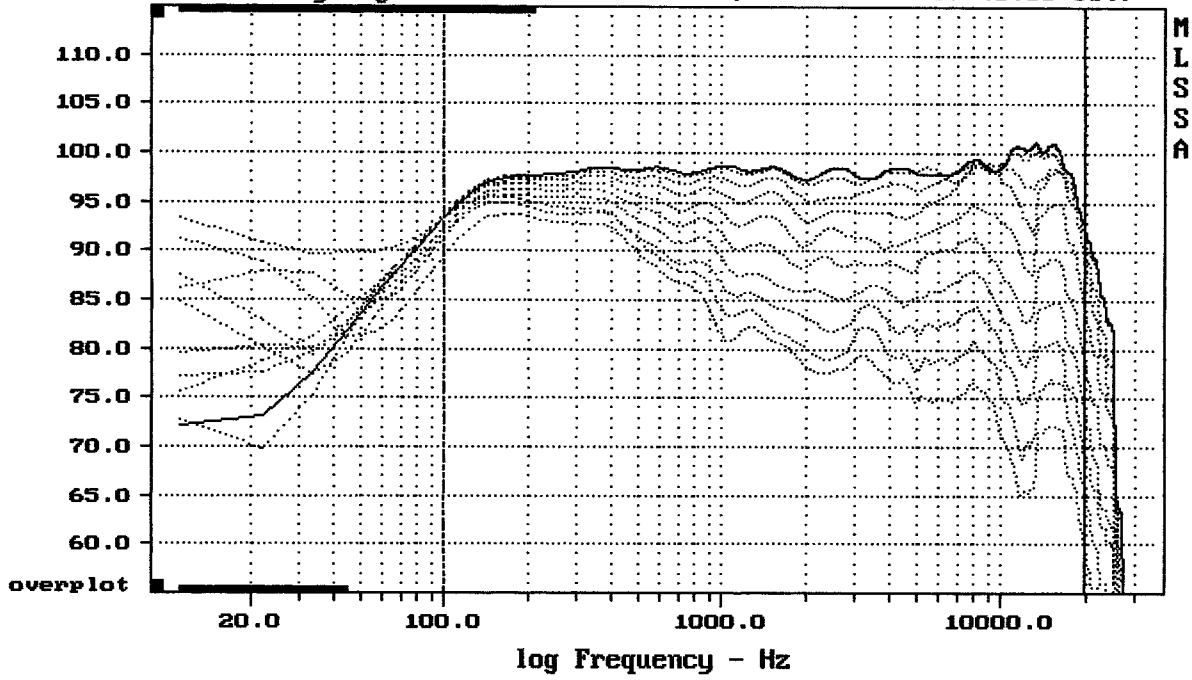


-73.29 dB, 1420 Hz (32), 2.420 msec (23)

DTTO



Sensitivity Mag - dB SPL/watt (8 ohms, @1.70 meters) (0.33 oct)

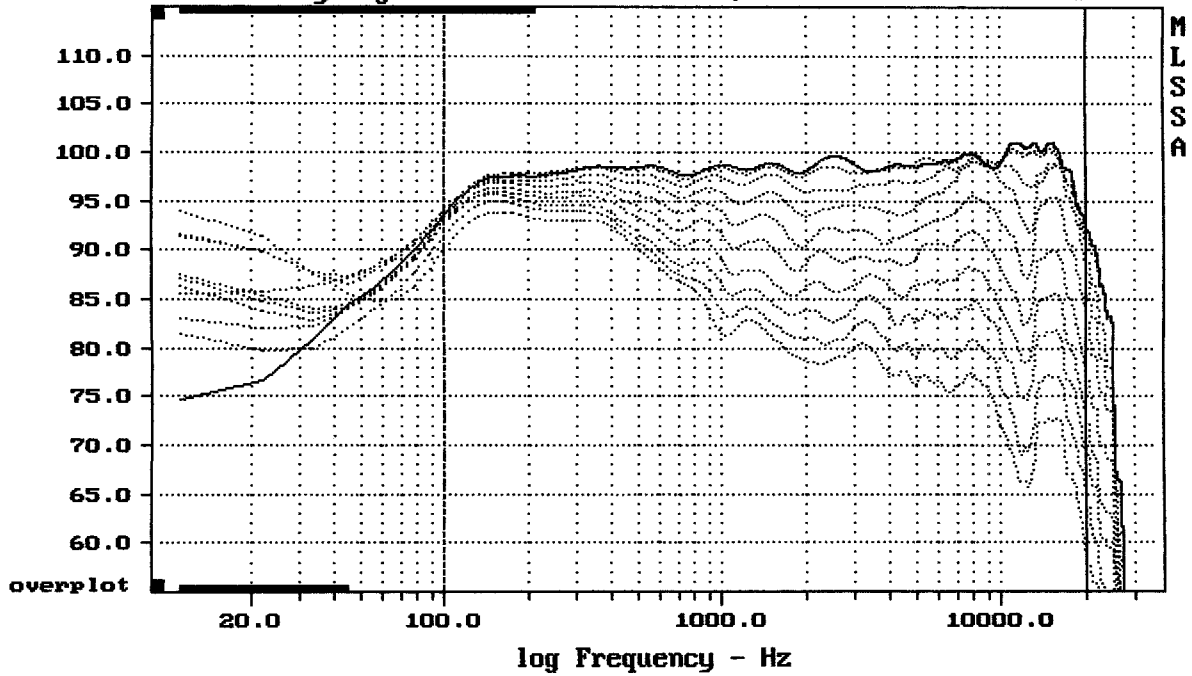


Overlay Compare: dev= +22/-10, std= 6.3, avg= -26

Megaton NDM152e + Protea set-up NEAR ; mic mezi 1.4" a 15"

MLSSA: Frequency Domain

Sensitivity Mag - dB SPL/watt (8 ohms, @1.70 meters) (0.33 oct)



Overlay Compare: dev= +22/-9.3, std= 6.2, avg= -26

DTTO ; mic proti horne

MLSSA: Frequency Domain