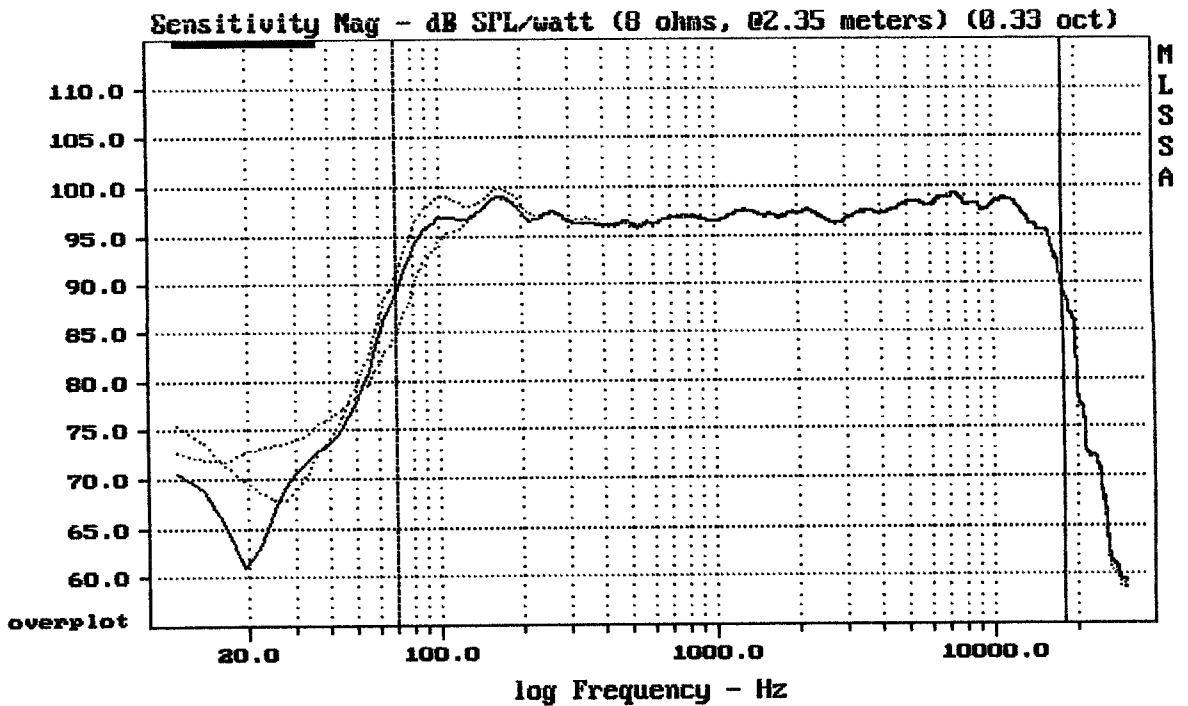


mean: 97.01, rms: 97.39, std: 2.28, max: 102.20, min: 74.06

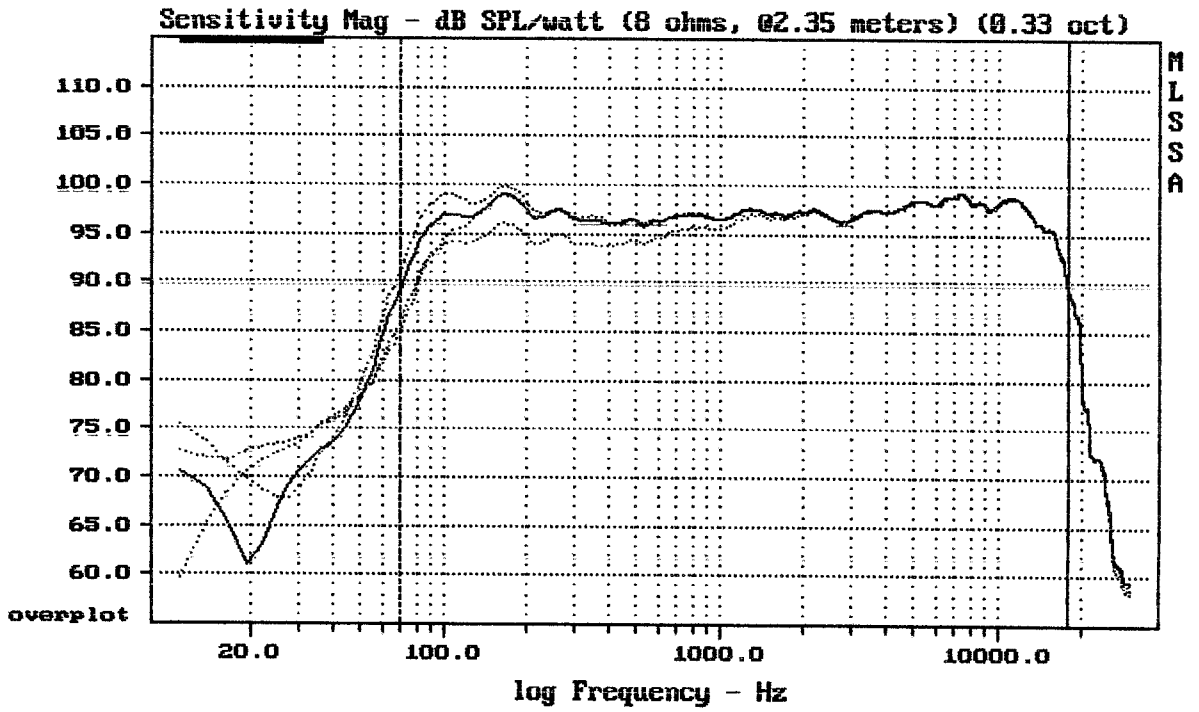
RCF TT1-A

MLSSA: Frequency Domain



CURSOR: y = 89.6064 x = 17861.1056 (6438)

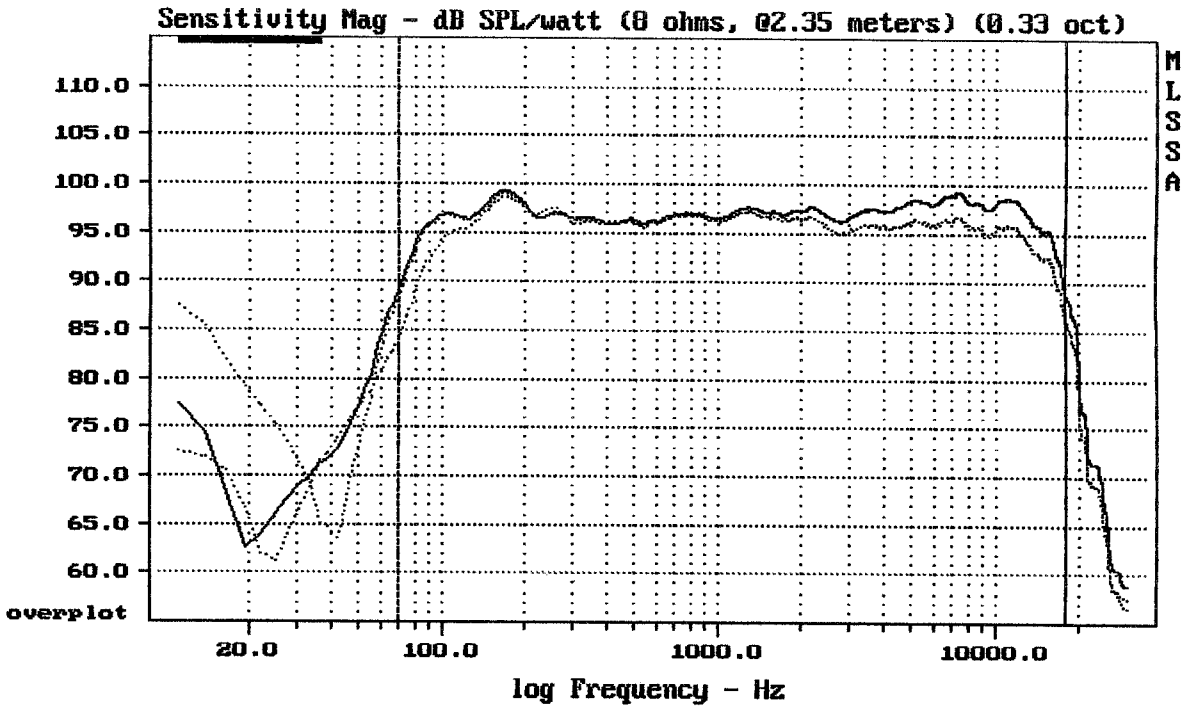
RCF TT1 A preset L3.-.- / L1 --- / L2 ...



CURSOR: y = 89.7243 x = 17861.1056 (6438)

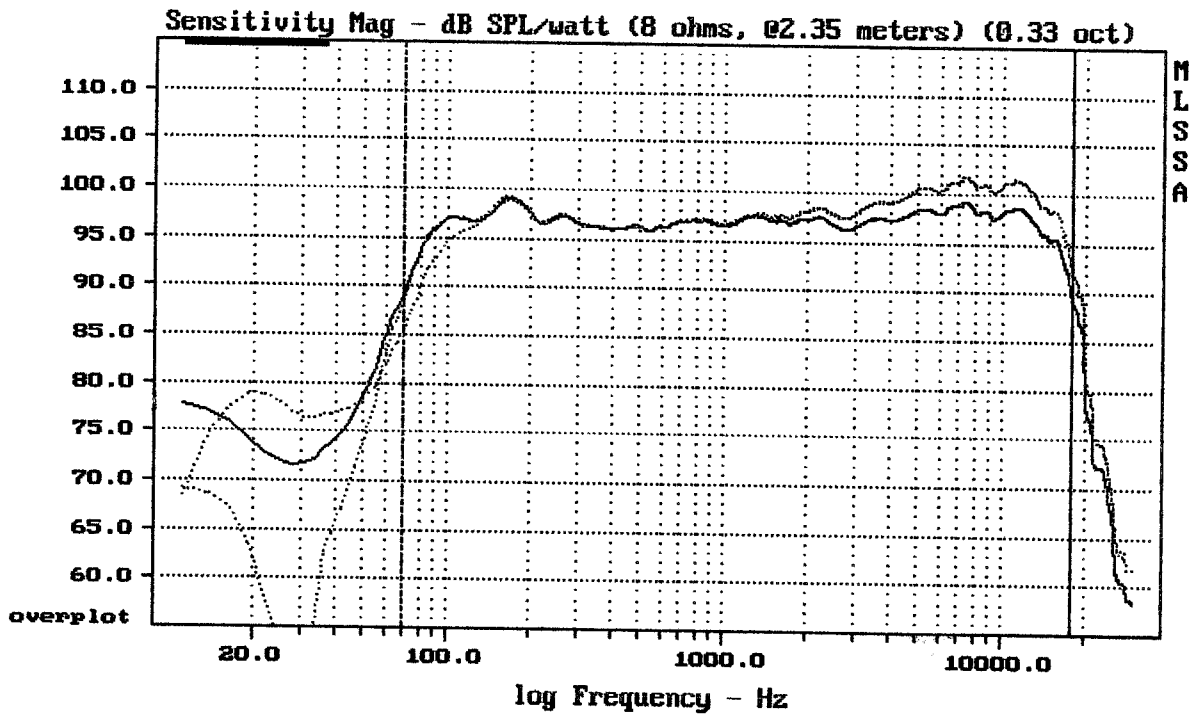
RCF TT1 A preset L3-.- / L1— / L2 ... / L4 .-. .

MLSSA: Frequency Domain



CURSOR: y = 86.6394 x = 17861.1056 (6438)

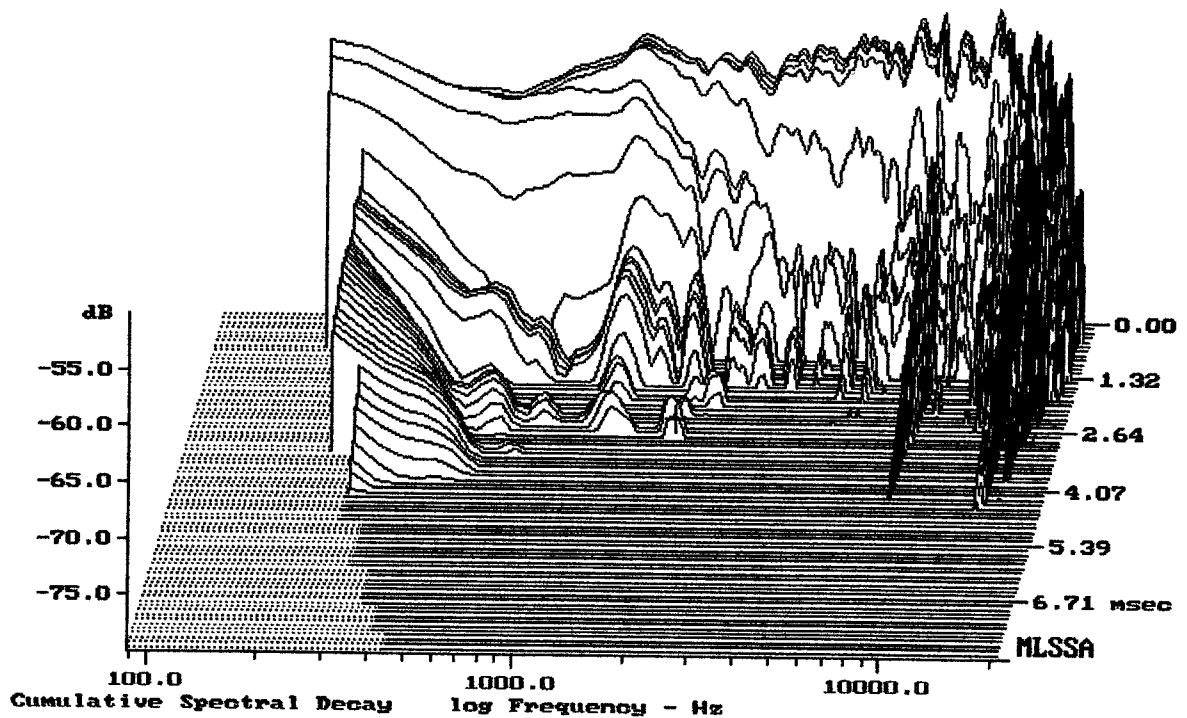
RCF TT1 A L1 — / C1 ... / C2 .-. .



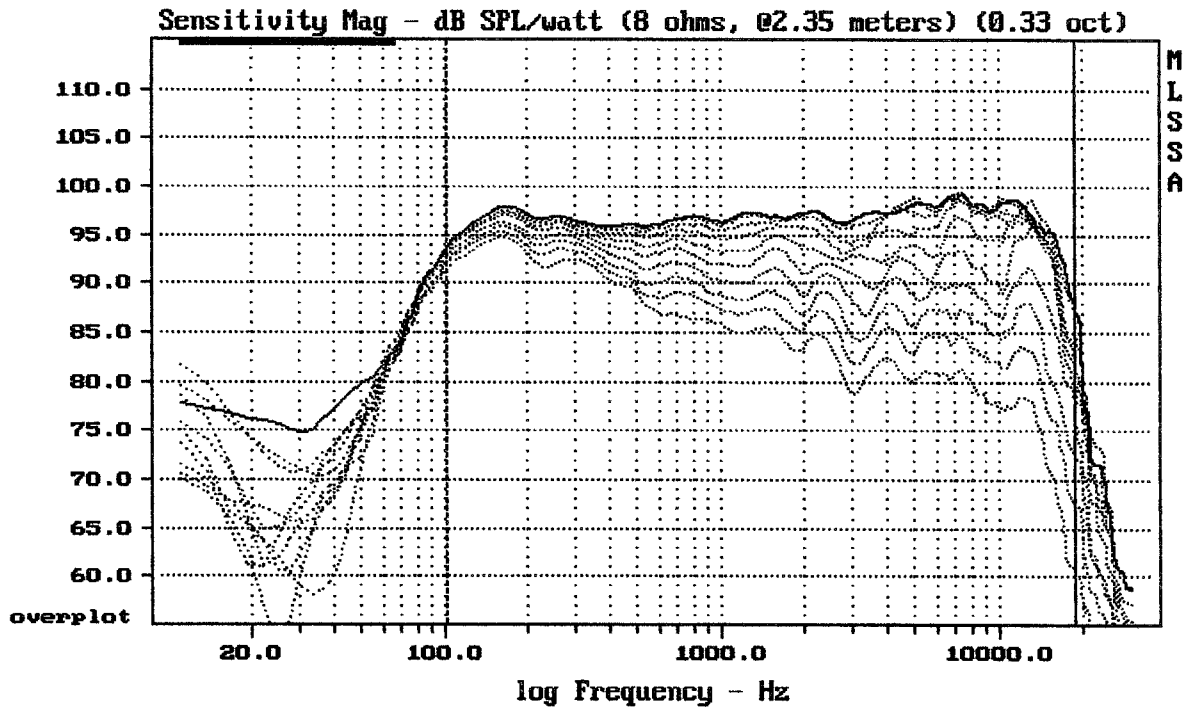
CURSOR: y = 92.5403 x = 17861.1056 (6438)

RCF TT1 A preset F1 ... / L1 --- / F2 .-.

MLSSA: Frequency Domain



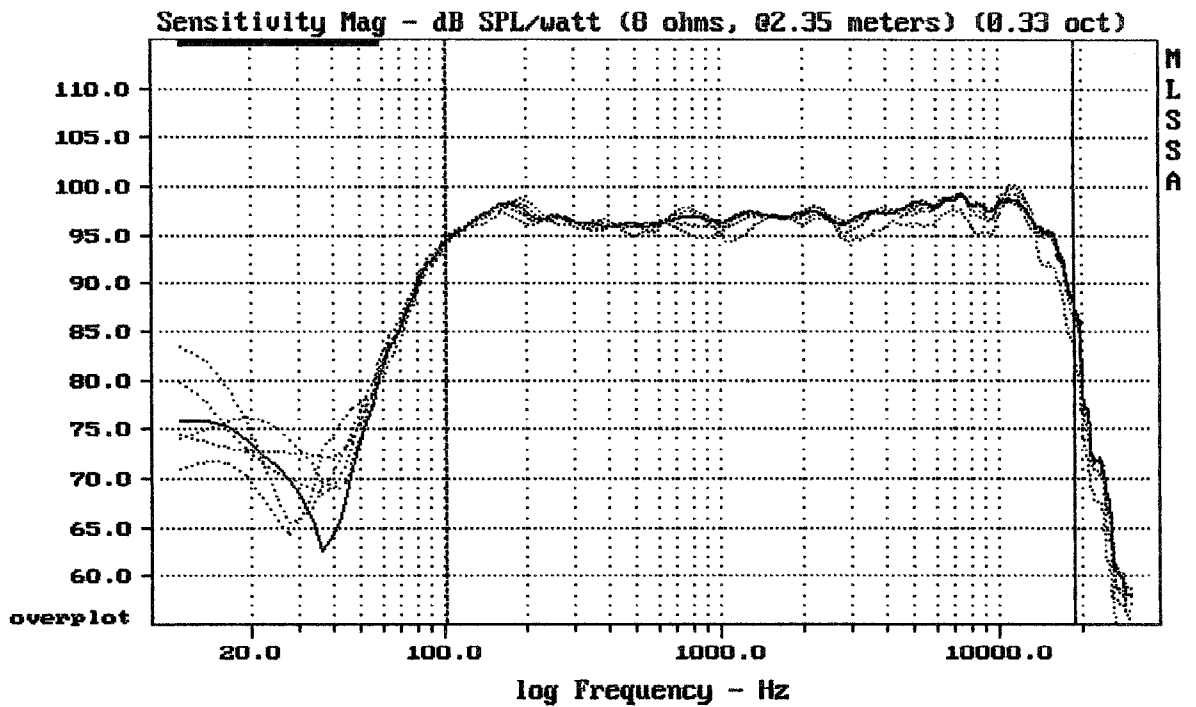
-99.99 dB, 1829 Hz (41), 2.429 msec (23)



Overlay Compare: dev= +17/-9.8, std= 5, avg= -19

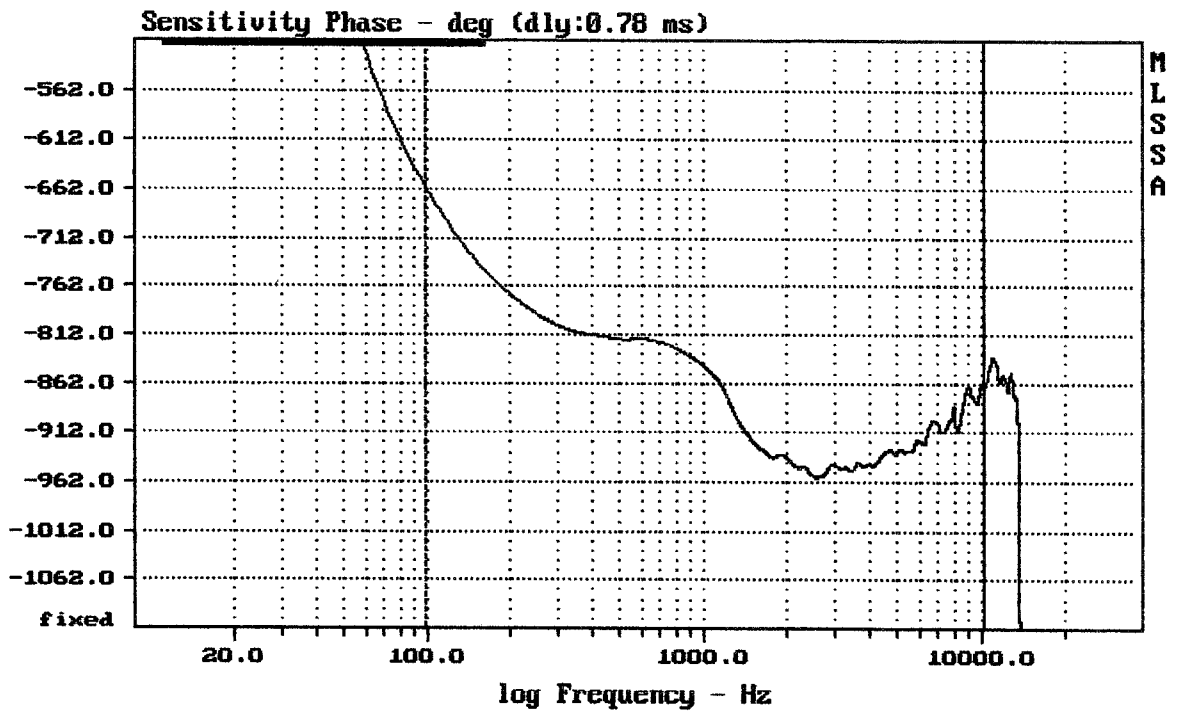
RCF TT1-A

MLSSA: Frequency Domain



Overlay Compare: dev= +3.5/-2.9, std= 1.5, avg= -1.8

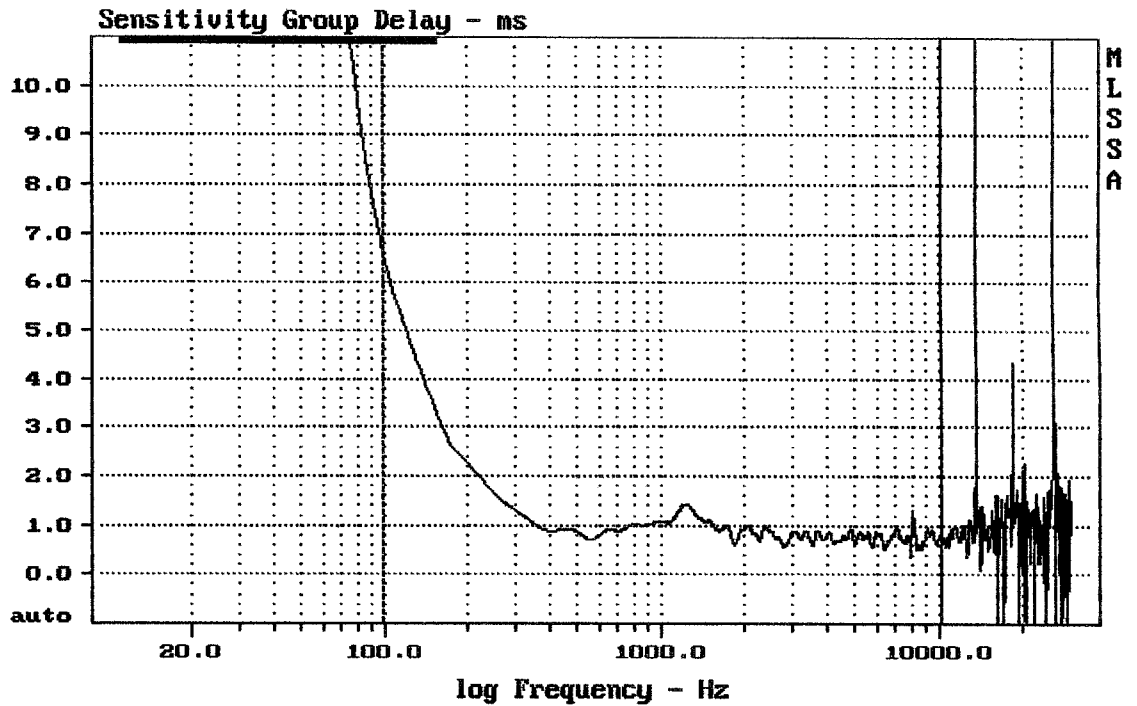
RCF TT1-A



CURSOR: $y = -864.152$ $x = 10159.5789$ (3662)

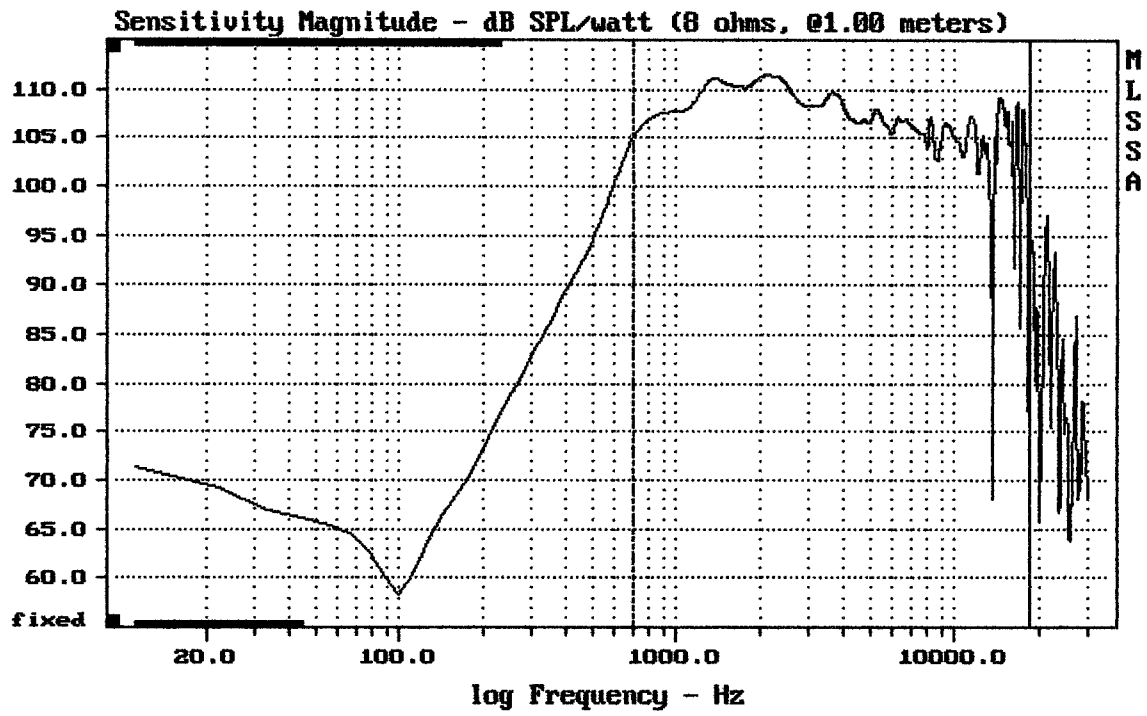
RCF TT1-A

MLSSA: Frequency Domain



CURSOR: $y = 0.750177$ $x = 10159.5789$ (3662)

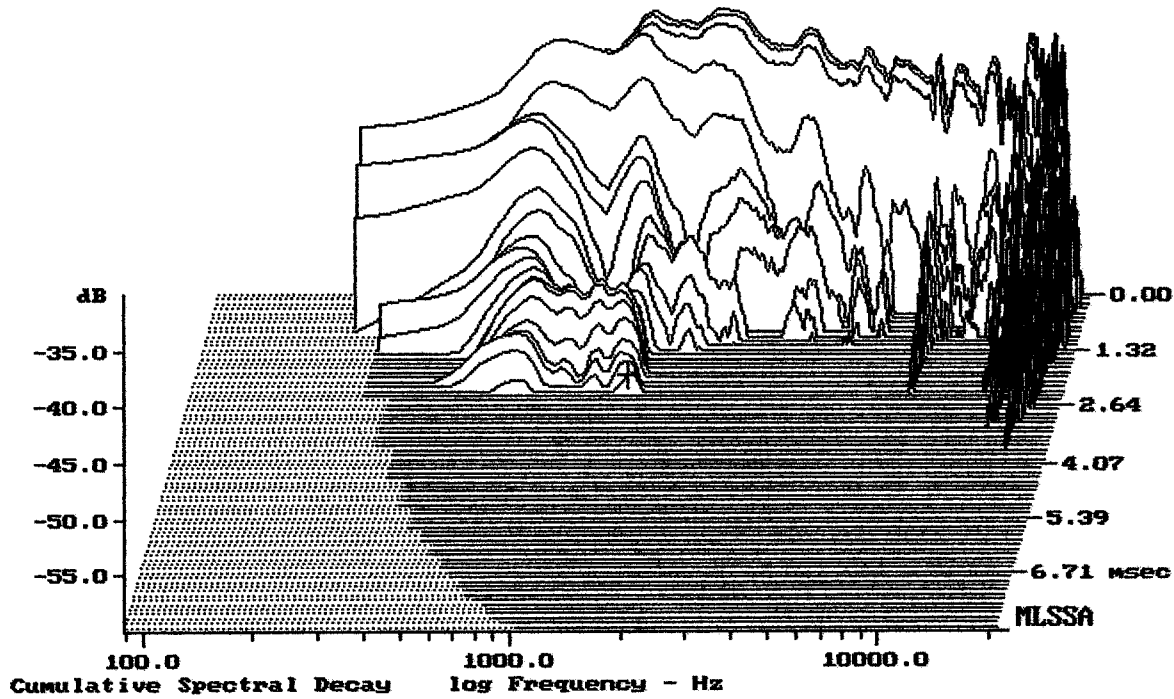
RCF TT1-A



Level (699:18510 Hz) = 108.18 dB SPL/watt (8 ohms, @1.00 meters)

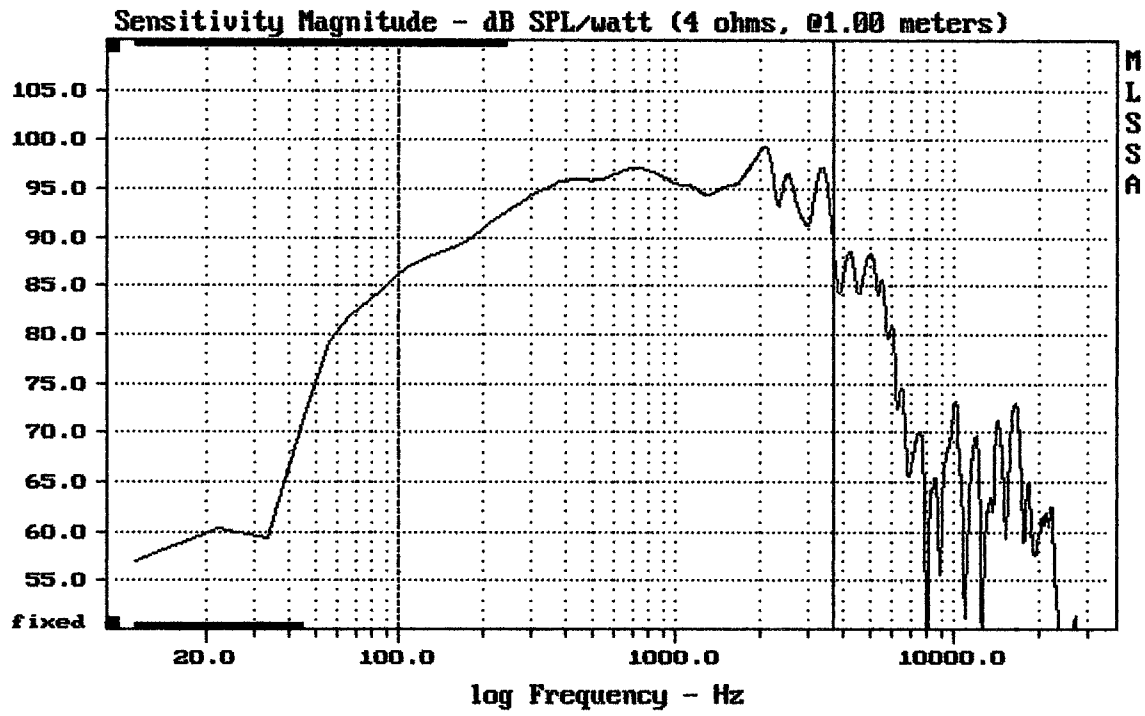
TT1-A

MLSSA: Frequency Domain



-58.64 dB, 1376 Hz (31), 2.310 msec (22)

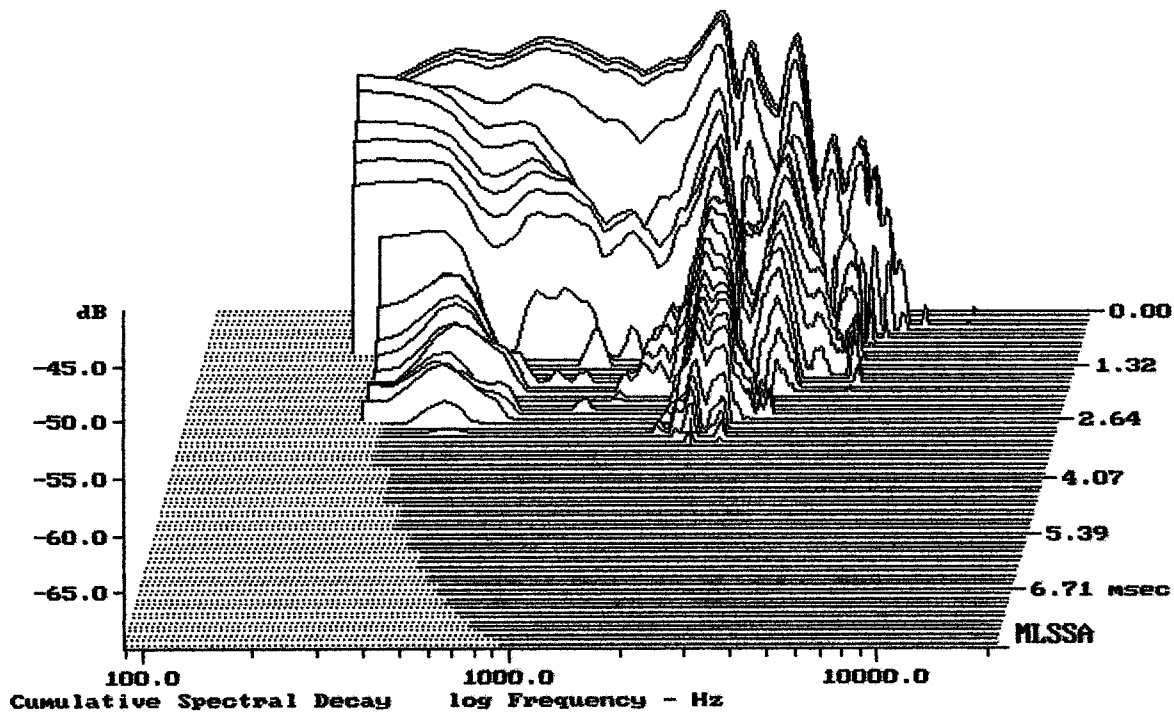
DTTO



Level (100:3706 Hz) = 94.83 dB SPL/watt (4 ohms, @1.00 meters)

TT1-A

MLSSA: Frequency Domain



-69.19 dB, 2175 Hz (49), 3.190 msec (30)

DTTO

Measured Data

QC Limits

Line	Parameter	Value	Units
1	RMSE-free	0.51	Ohms
2	Fs	69.13	Hz
3	Re	2.38	Ohms[dc]
4	Res	73.39	Ohms
5	Qms	5.35	
6	Qes	0.17	
7	Qts	0.17	
8	L1	0.49	mH
9	L2	0.87	mH
10	R2	2.64	Ohms
11	RMSE-load	0.41	Ohms
12	Vas(Sd)	20.88	liters
13	Mms	38.84	grams
14	Cms	136	$\mu\text{M}/\text{Newton}$
15	B1	15.21	Tesla-M
16	SPLref(Sd)	97.8	dB[Re]
17	Rub-index	0.01	

Method: Mass-loaded (40.00 grams)

Area (Sd): 330.06 sq cm

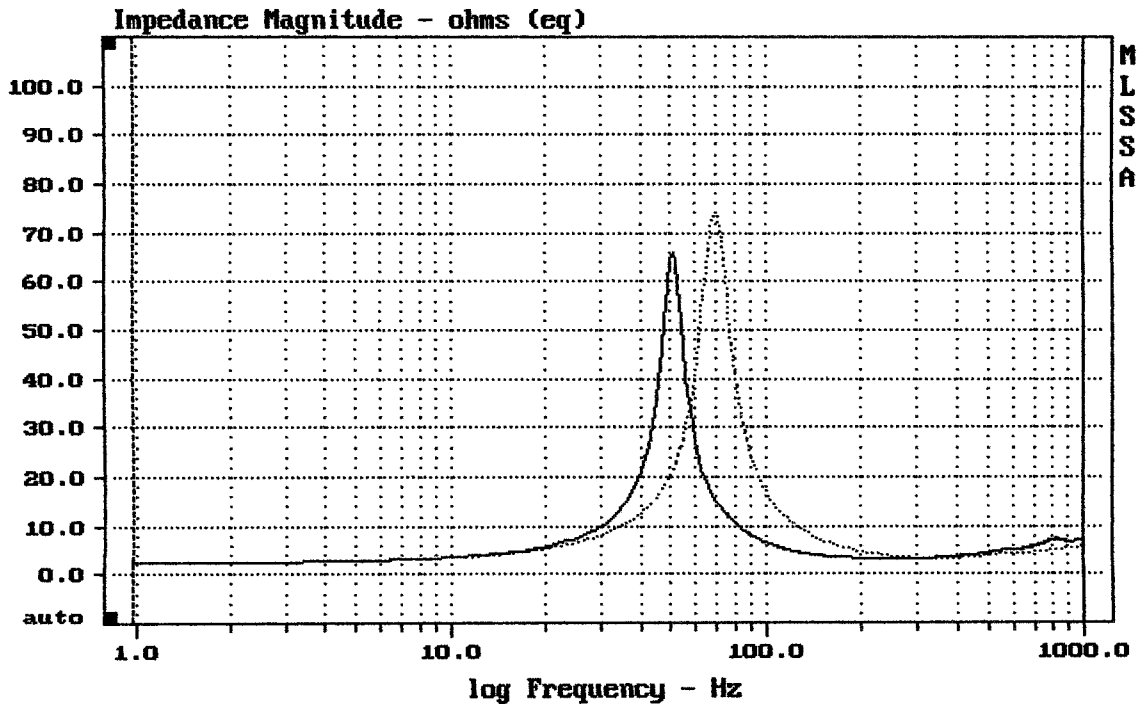
DCR mode: Measure (-0.12 ohms)

QC file: CLOSED

Analysis successful. Shift in Fs = -26.7% (-20% to -50% is recommended).

10" TT1-A

MLSSA: Parameters



mean: 6.766, rms: 11.2, std: 8.927, max: 73.69, min: 2.522

MLSSA: Frequency Domain