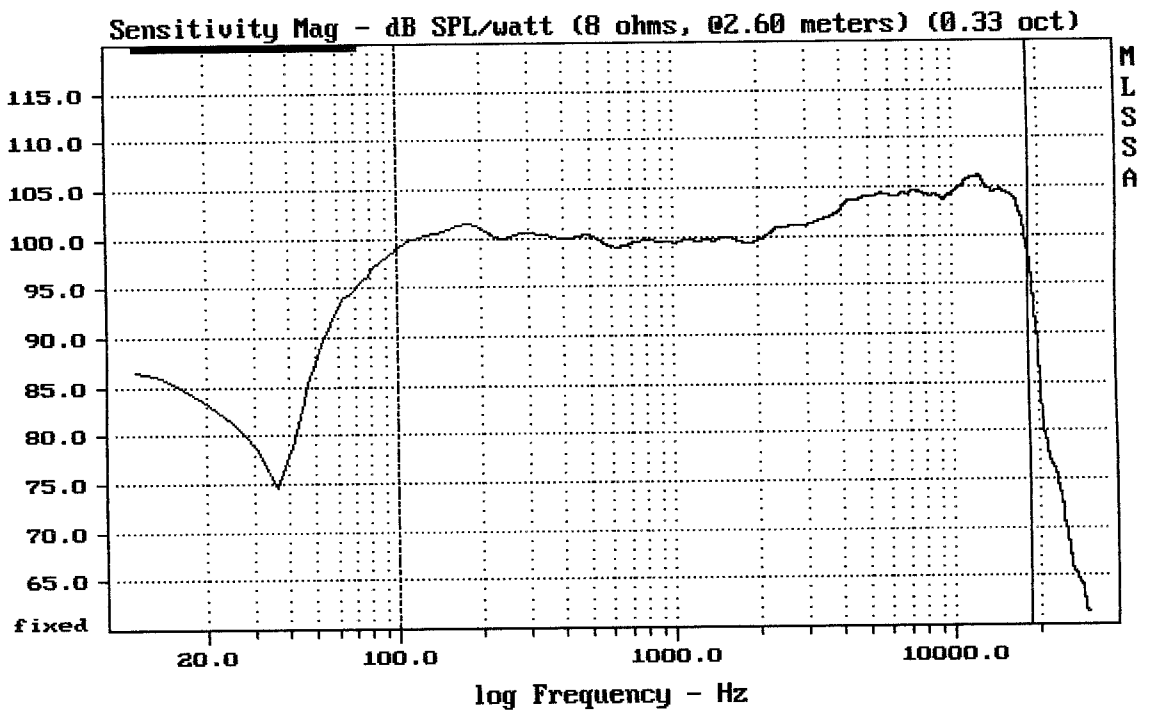


mean: 103.39, rms: 103.78, std: 2.33, max: 108.63, min: 89.92

RCF TTP5-A

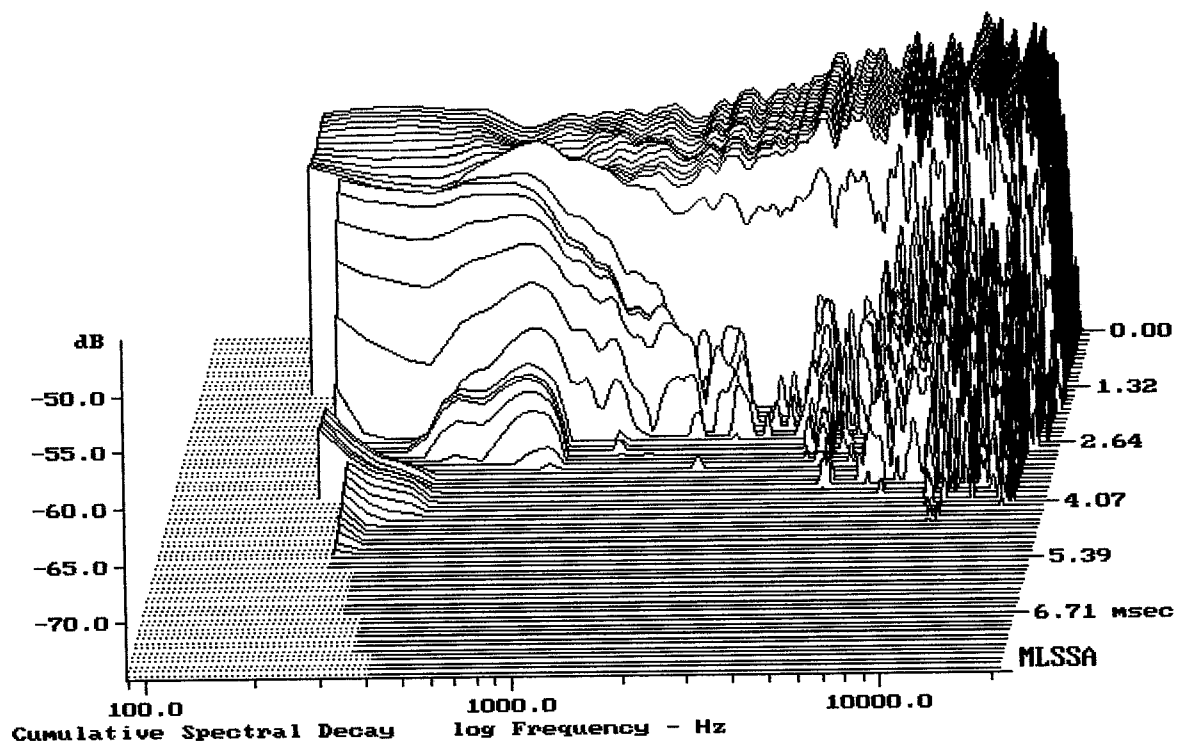
MLSSA: Frequency Domain



mean: 103.57, rms: 103.75, std: 1.62, max: 106.11, min: 98.16

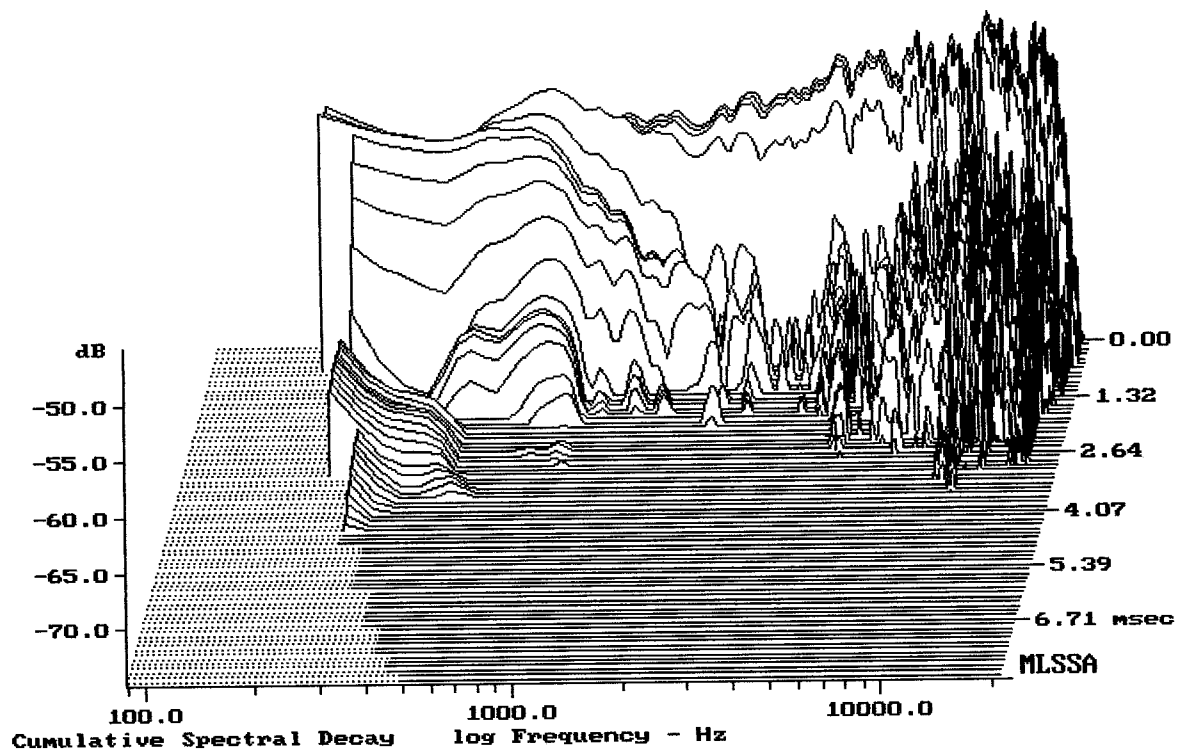
RCF TTP5-A

MLSSA: Frequency Domain



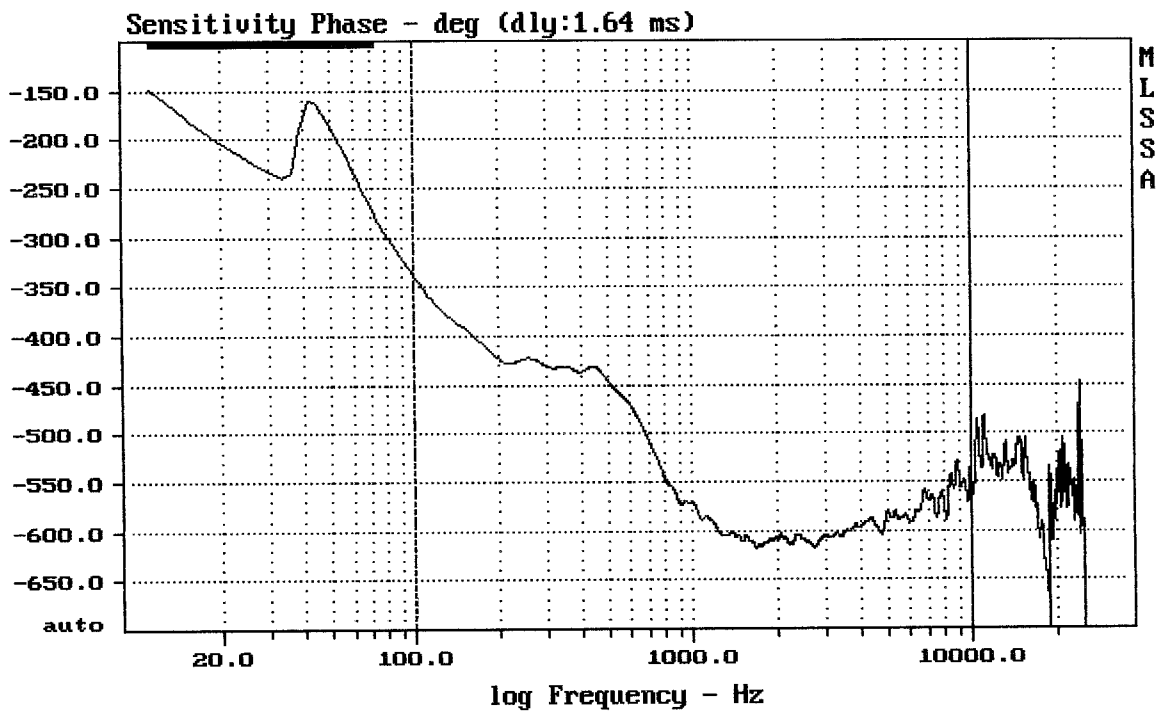
-73.32 dB, 5060 Hz (114), 3.300 msec (31)

RCF TTP5-A



-74.01 dB, 5105 Hz (115), 2.530 msec (24)

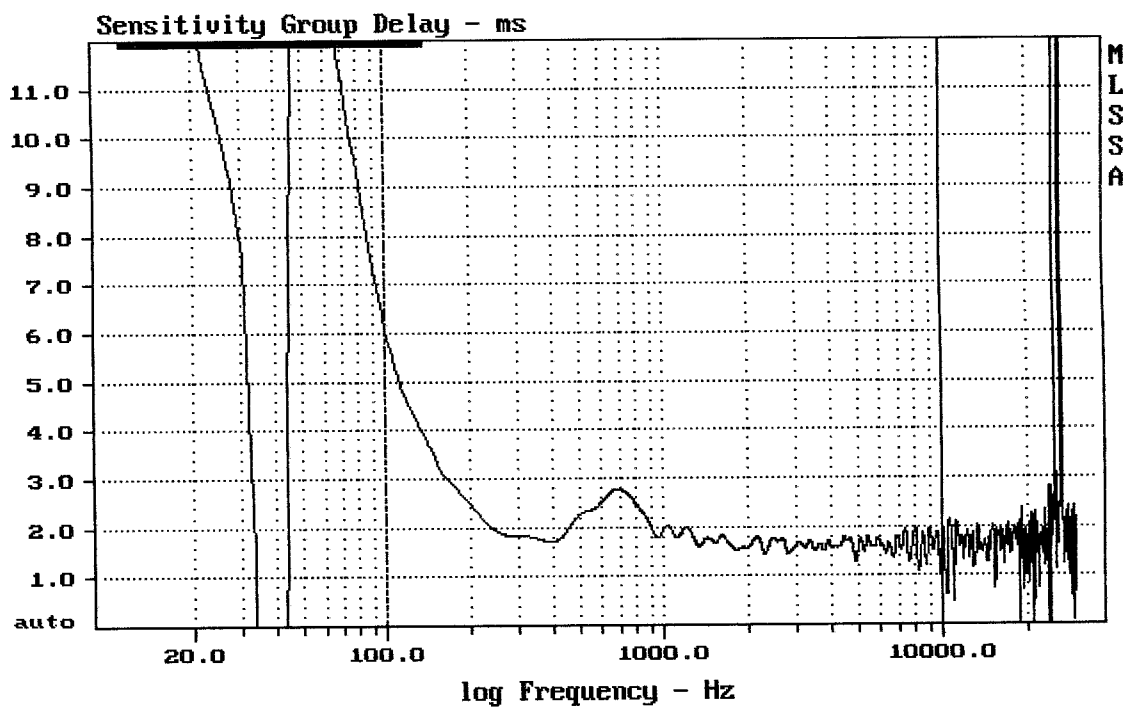
RCF TTP5-A



mean: -573.5, rms: 575, std: 41.5, max: -338.8, min: -619.1

RCF TTP5-A

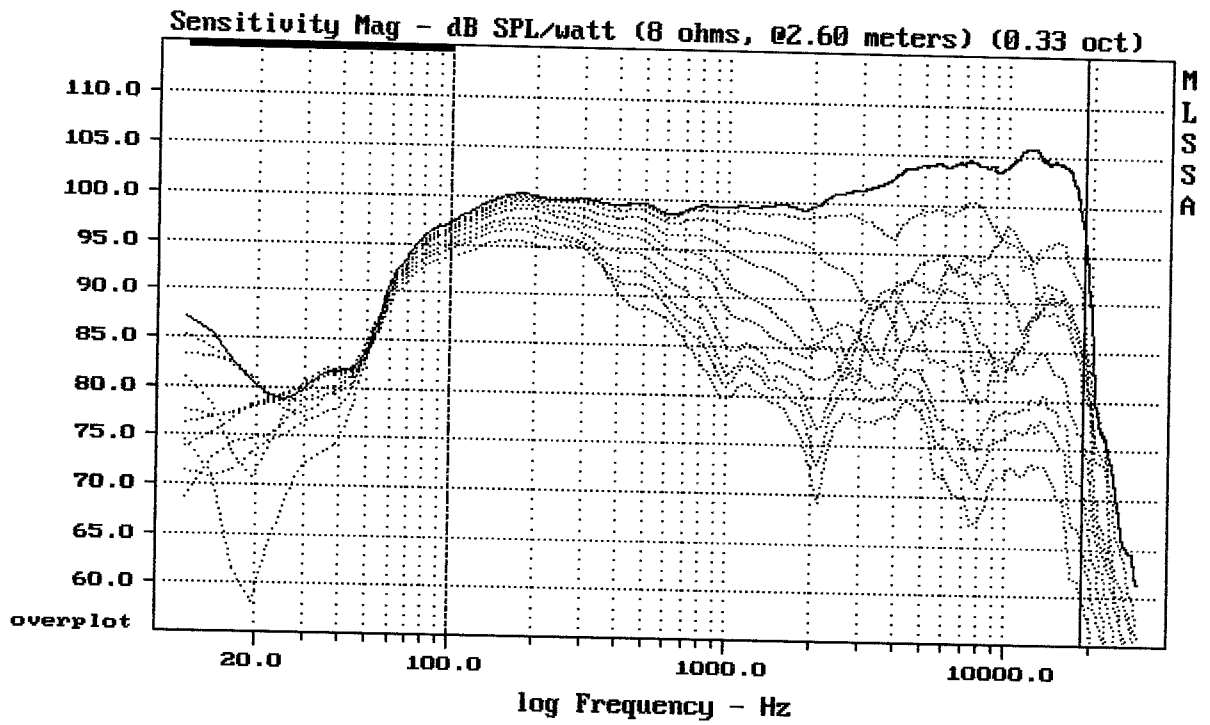
MLSSA: Frequency Domain



mean: 1.697, rms: 1.731, std: 0.3381, max: 6.055, min: 1.003

RCF TTP5-A

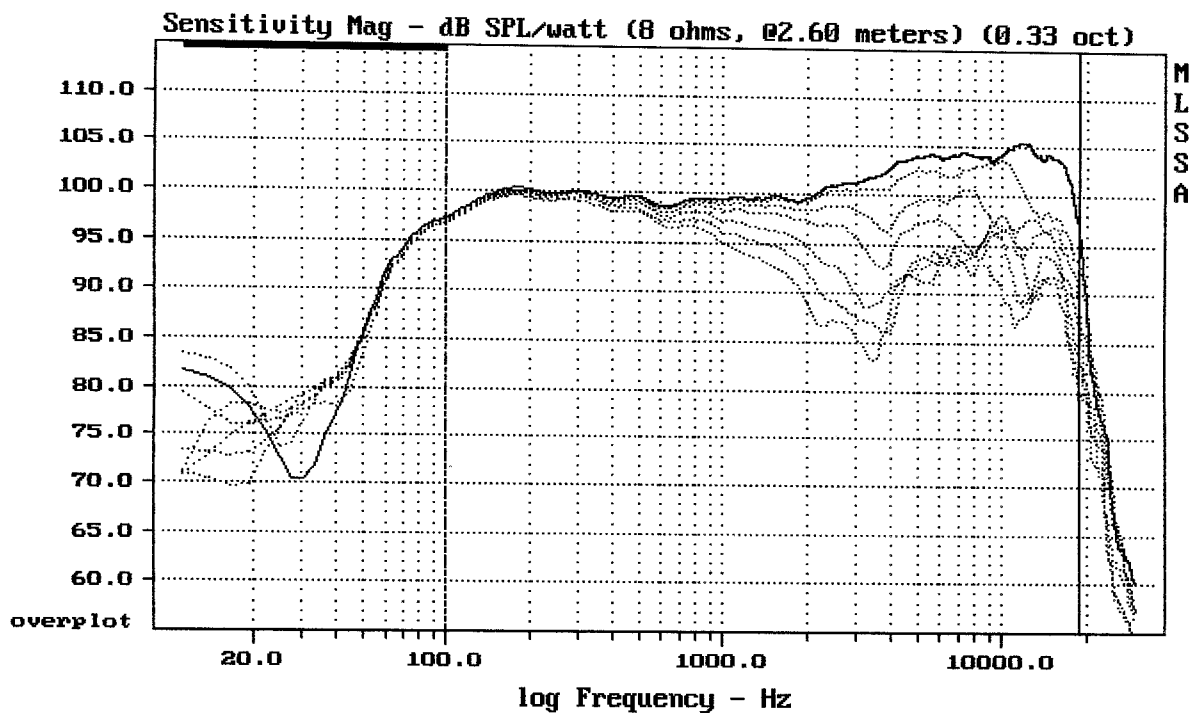
MLSSA: Frequency Domain



Overlay Compare: dev= +27/-9.8, std= 6.7, avg= -31

RCF TTP5-A horizontal 0-90st. po 10st.

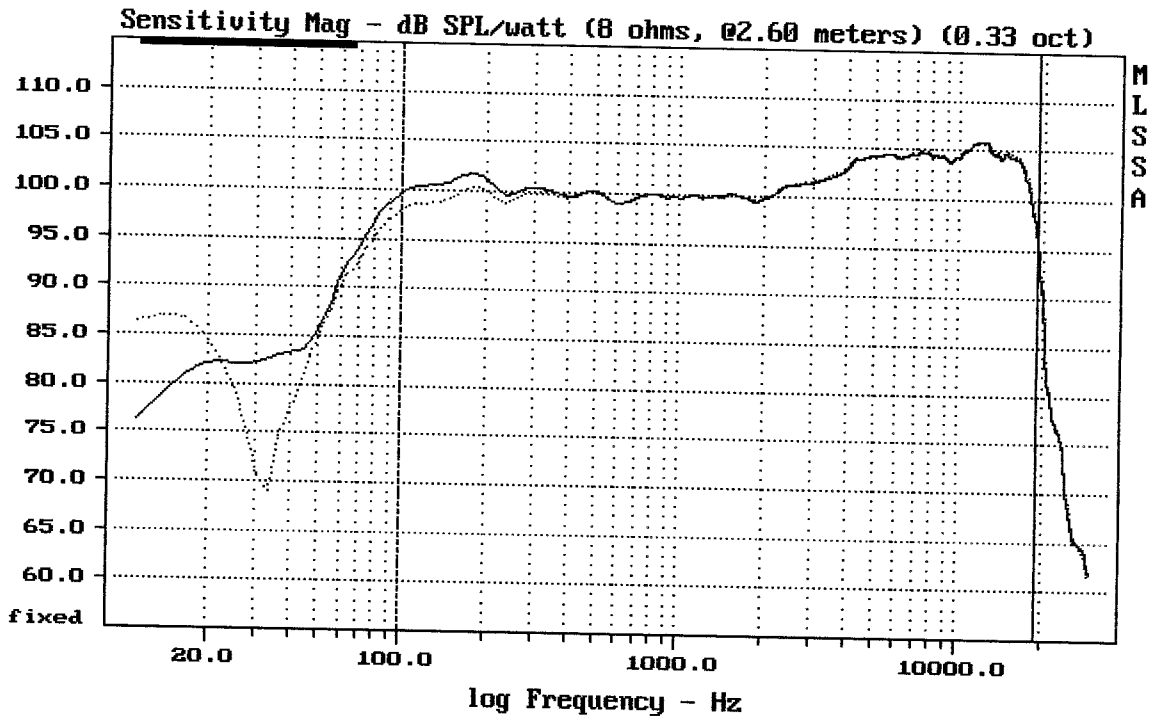
MLSSA: Frequency Domain



CURSOR: y = 80.5565 x = 18826.5708 (6786)

RCF TTP5-A horizontal 0-30st. po 5st.

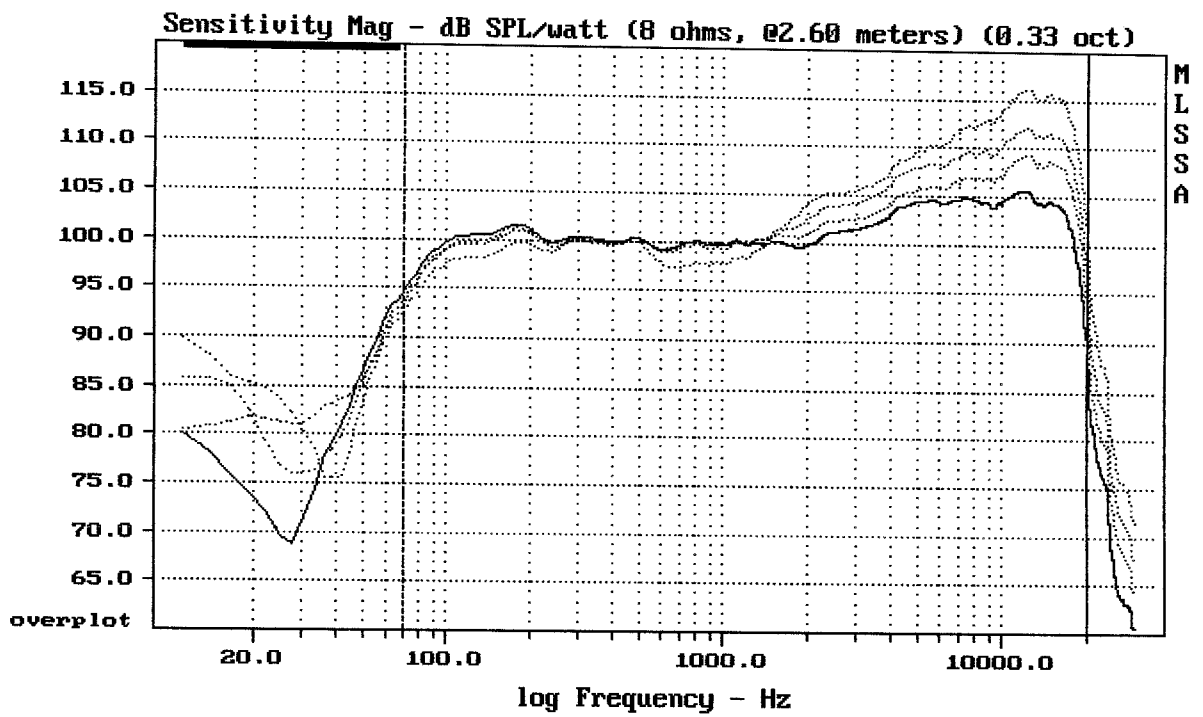
MLSSA: Frequency Domain



Overlay Compare: dev= +1.9/-0.28, std= 0.2, avg= -0.12

RCF TTP5-A preset 1 flown --- / 1 stacking

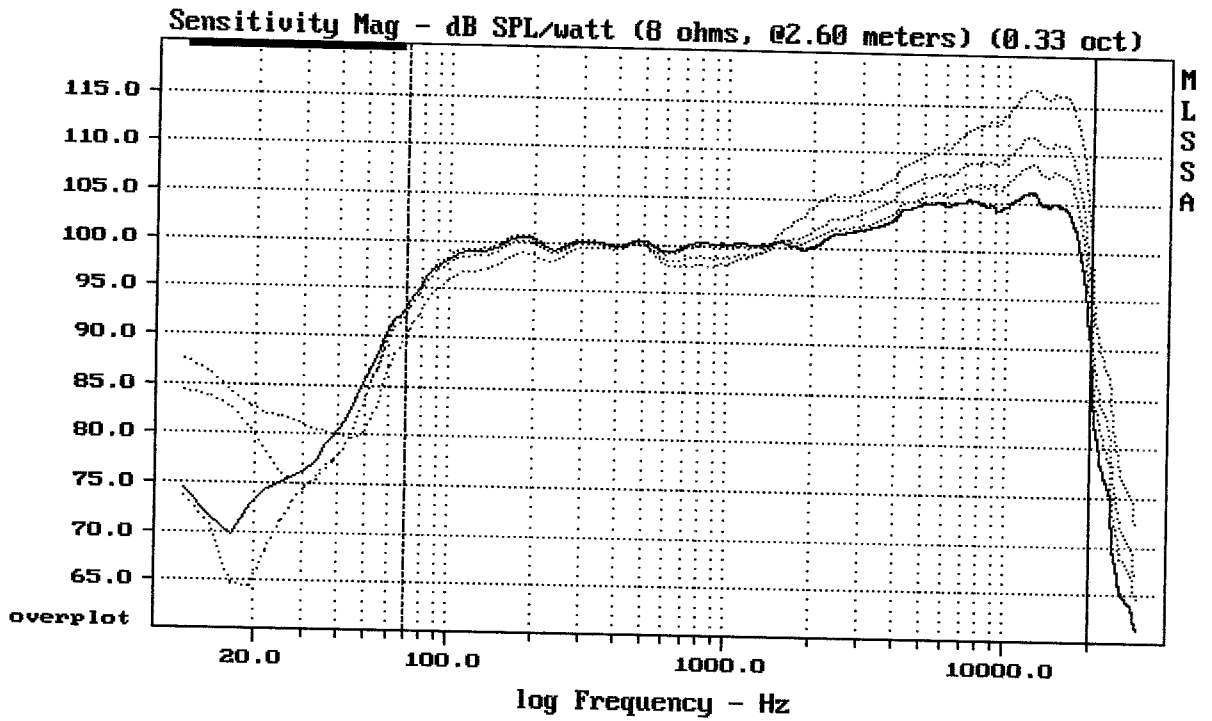
MLSSA: Frequency Domain



Overlay Compare: dev= +3.7/-10, std= 3.7, avg= 7.9

RCF TTP5-A preset flown 5 -.- / 3 .- / 2 ... / 1 ---

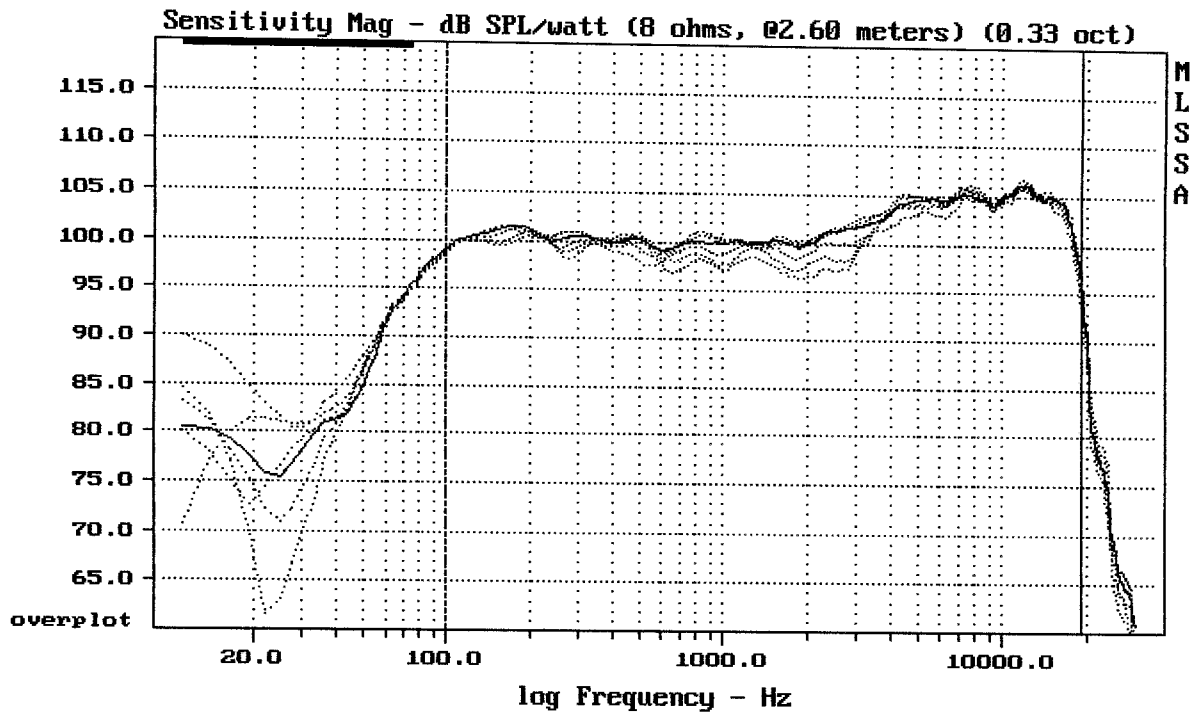
MLSSA: Frequency Domain



Overlay Compare: dev= +3.7/-11, std= 3.8, avg= 8

RCF T1P5-A preset stacking 5 -.- / 3 -. / 2 ... / 1 ---

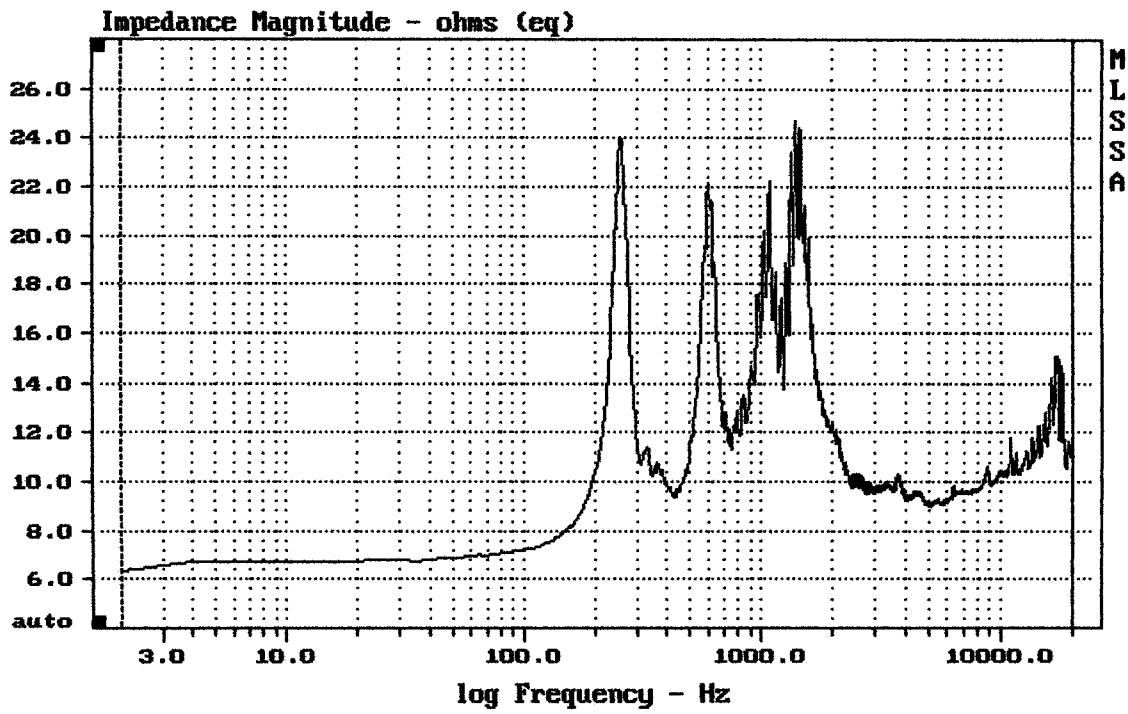
MLSSA: Frequency Domain



Overlay Compare: dev= +1.5/-3.1, std= 1, avg= -1.2

RCF T1P5-A vert.

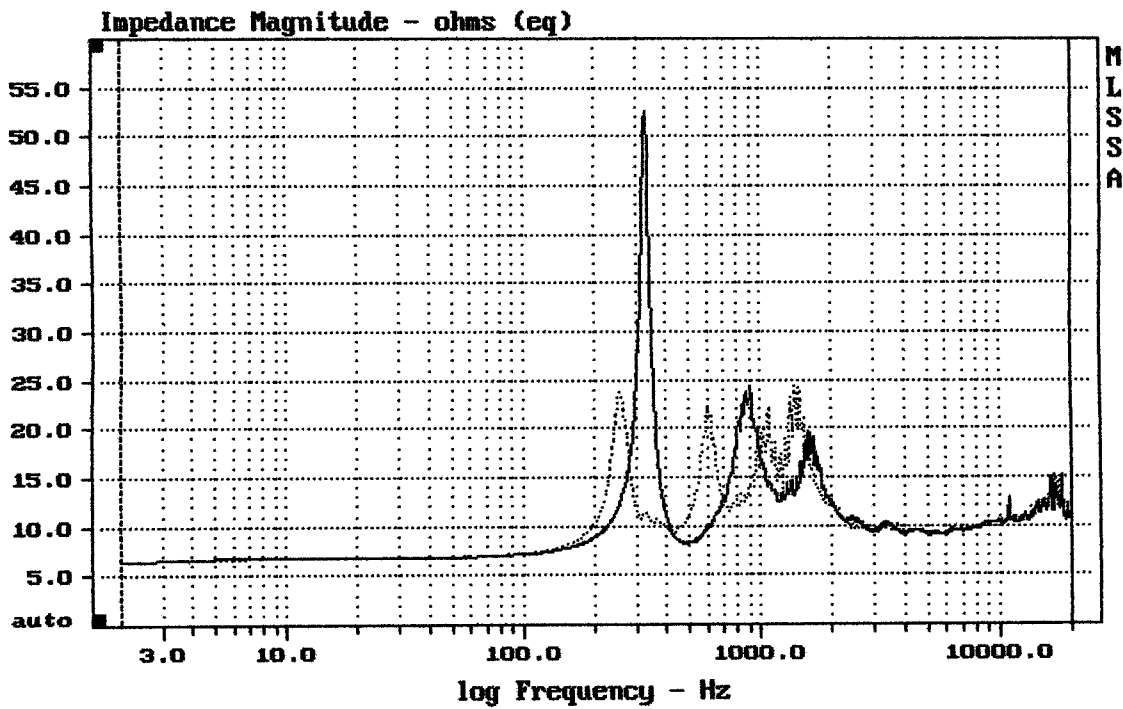
MLSSA: Frequency Domain



mean: 11.18, rms: 11.4, std: 2.222, max: 24.71, min: 6.347

TTP5-A

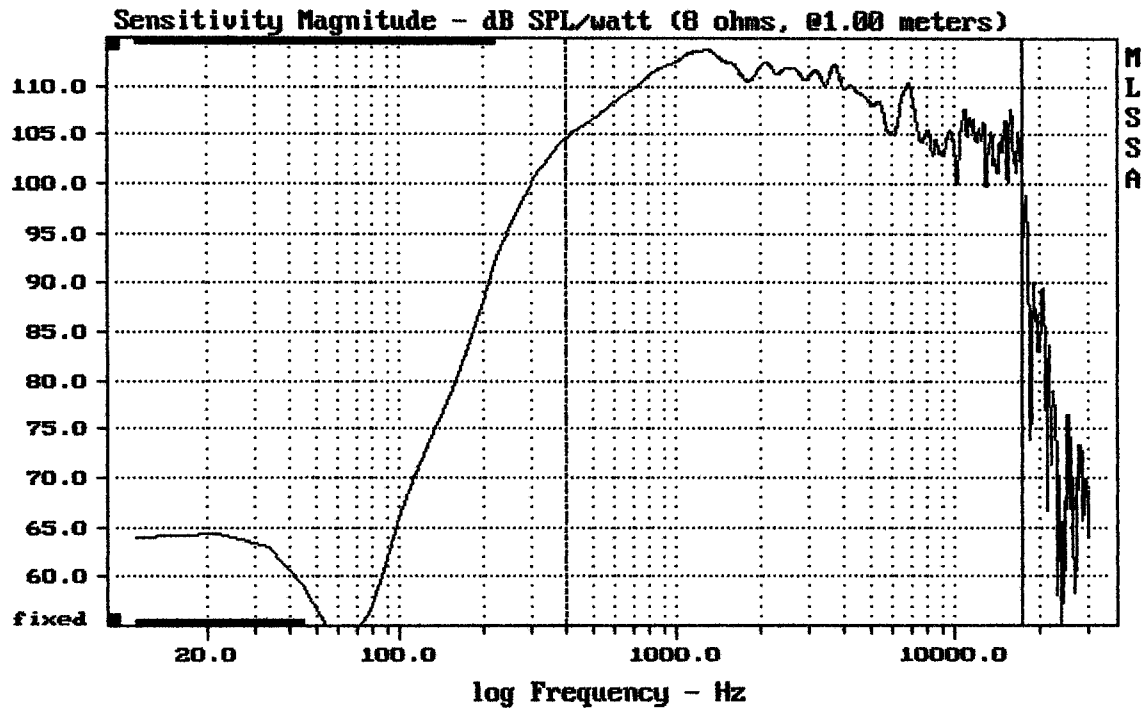
MLSSA: Frequency Domain



Overlay Compare: dev= +41/-12, std= 2.2, avg= -0.019

DT10/TT5-A /—

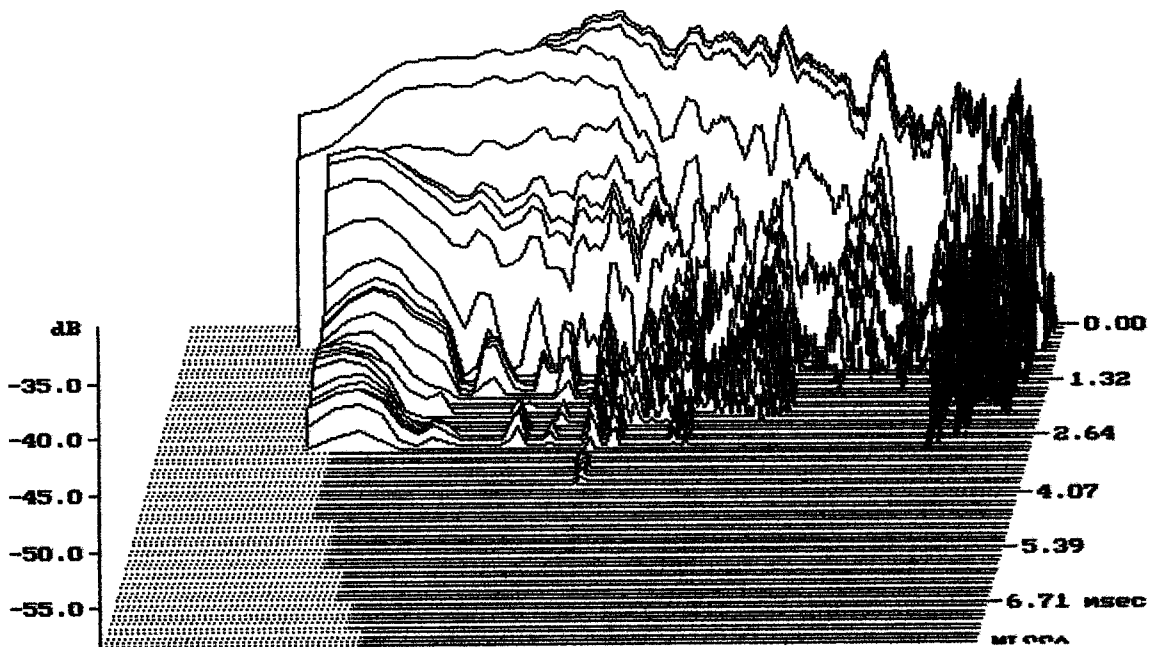
MLSSA: Frequency Domain

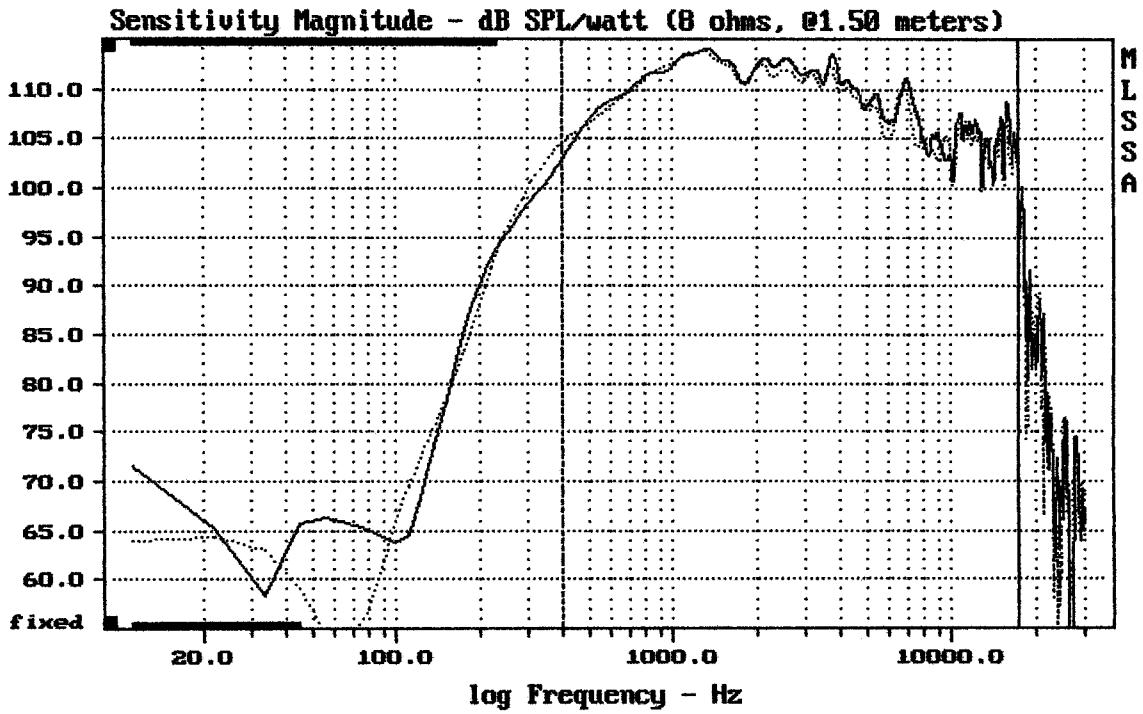


Level (400:17401 Hz) = 109.98 dB SPL/watt (8 ohms, @1.00 meters)

TTP5-A

MLSSA: Frequency Domain

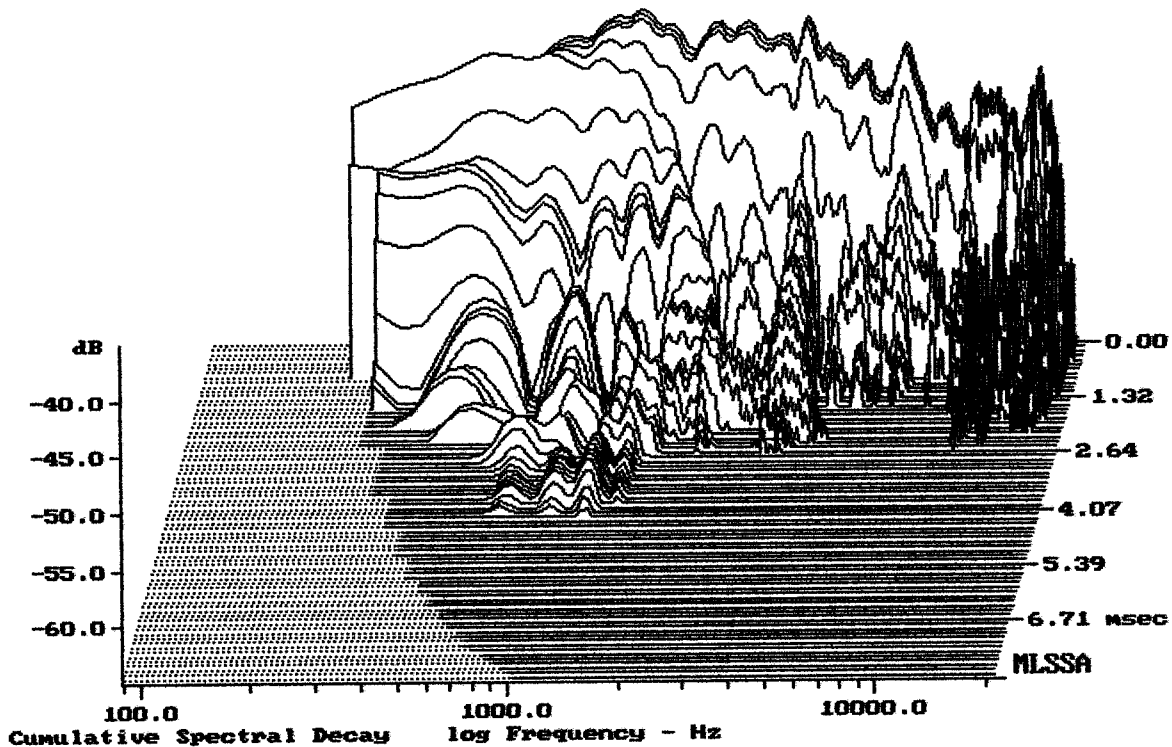




Overlay Compare: dev= +3/-3.3, std= 1, avg= 0.71

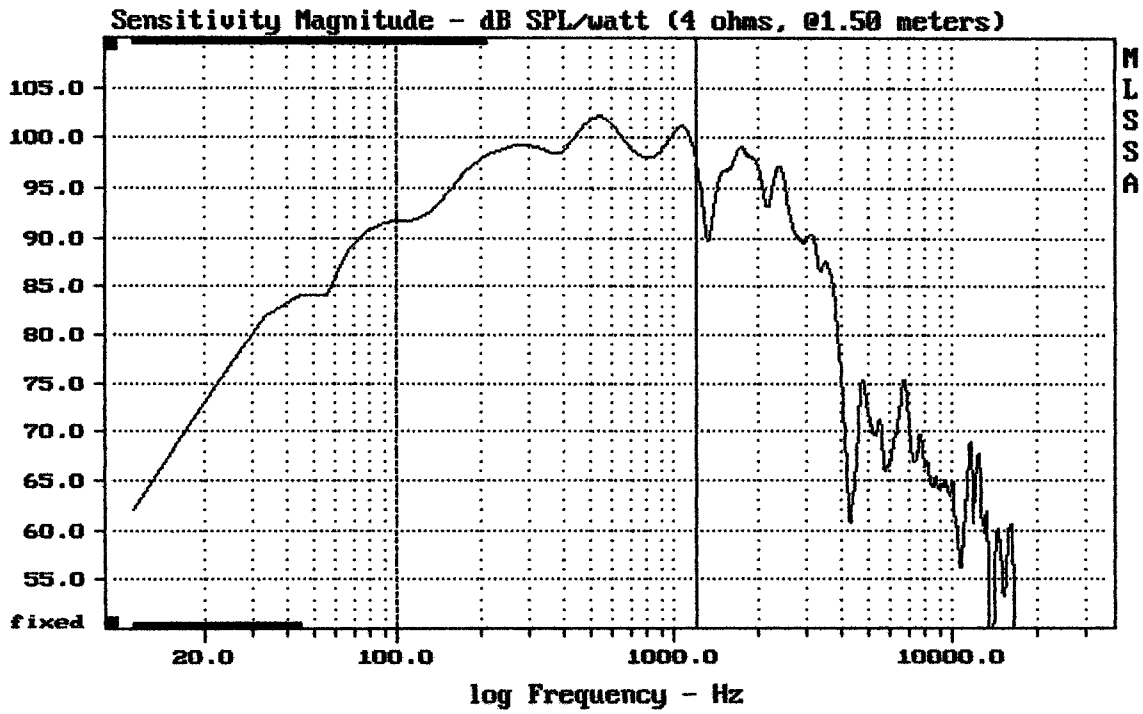
TTP5-A 1/1.5m / —

MLSSA: Frequency Domain



-64.29 dB, 3596 Hz (81), 2.530 msec (24)

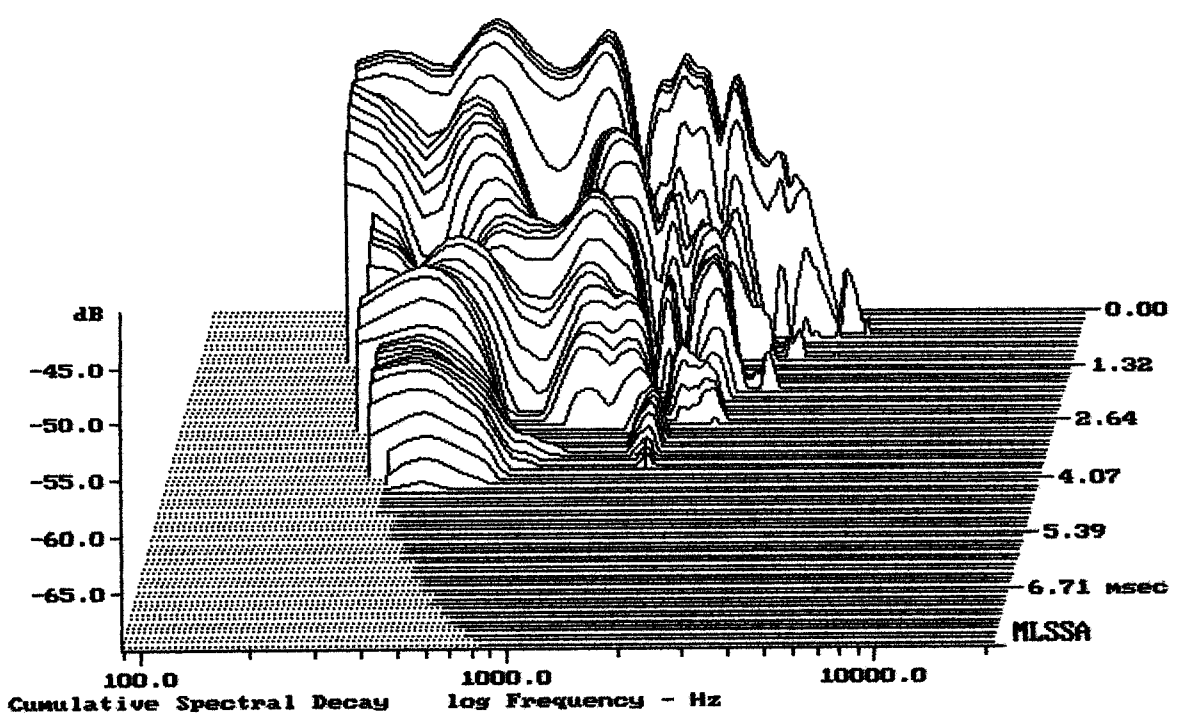
DTTO



Level (100:1210 Hz) = 98.74 dB SPL/watt (4 ohms, @1.50 meters)

TTP5-A

MLSSA: Frequency Domain



-69.03 dB, 1731 Hz (39), 3.740 msec (35)

DT10

Measured Data

QC Limits

Line	Parameter	Value	Units
1	RMSE-free	0.36	Ohms
2	Fs	46.32	Hz
3	Re	2.38	Ohms[dc]
4	Res	91.78	Ohms
5	Qms	7.39	
6	Qes	0.19	
7	Qts	0.19	
8	L1	0.52	mH
9	L2	1.21	mH
10	R2	4.18	Ohms
11	RMSE-load	0.47	Ohms
12	Vas(Sd)	140.73	liters
13	Mms	97.15	grams
14	Cms	122	$\mu\text{M}/\text{Newton}$
15	B1	18.74	Tesla-M
16	SPLref(Sd)	100.5	dB[Re]
17	Rub-index	0.00	

Method: Mass-loaded (80.00 grams)

Area (Sd): 907.92 sq cm

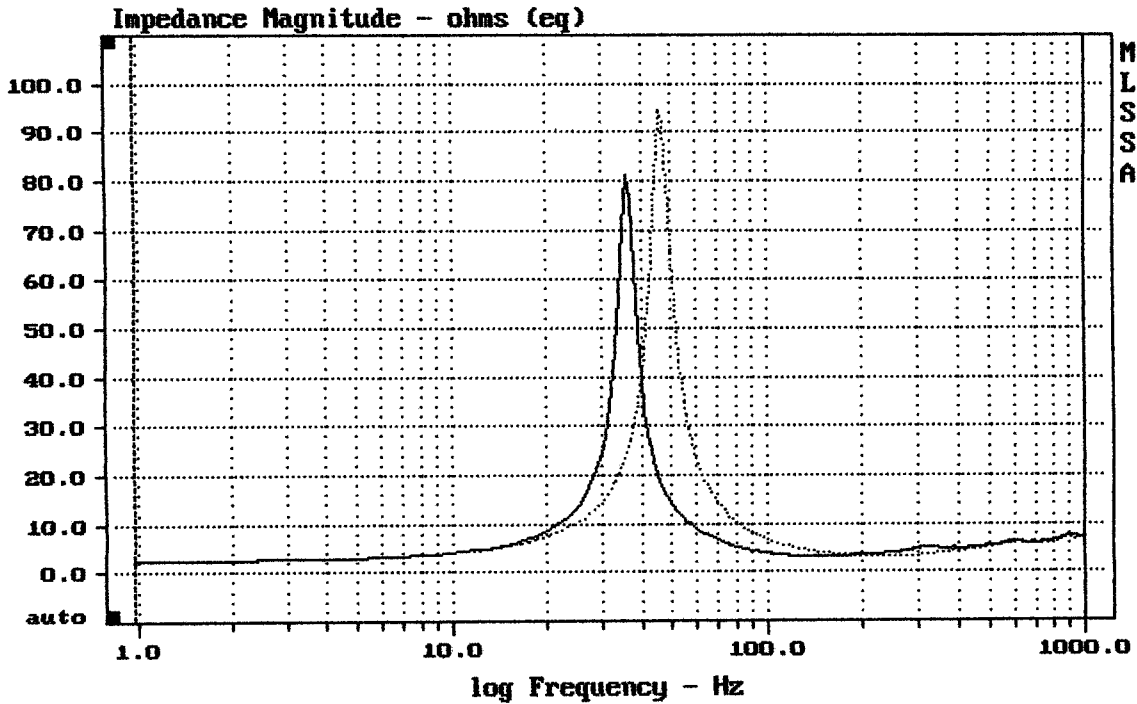
DCR mode: Measure (-0.14 ohms)

QC file: CLOSED

Analysis successful. Shift in Fs = -21.8% (-20% to -50% is recommended).

TTP-5A

MLSSA: Parameters



mean: 6.784, rms: 10.5, std: 8.013, max: 94.3, min: 2.571

DTTO

MLSSA: Frequency Domain