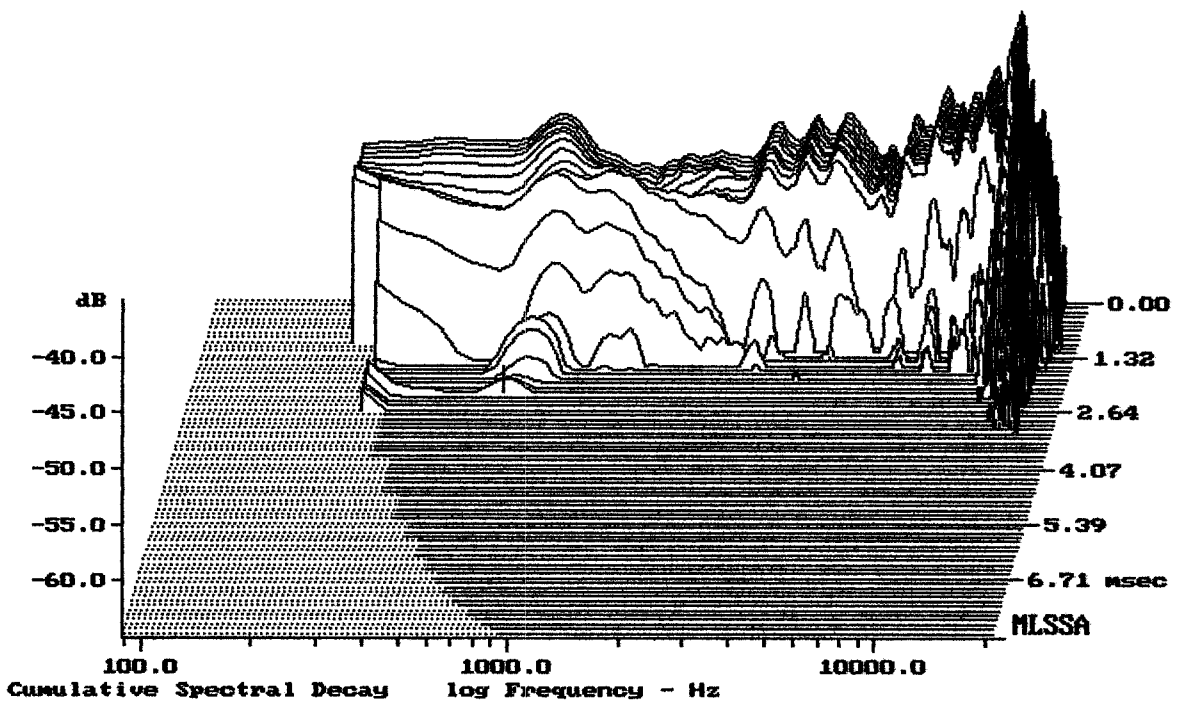


mean: 99.77, rms: 100.53, std: 3.14, max: 109.06, min: 86.95

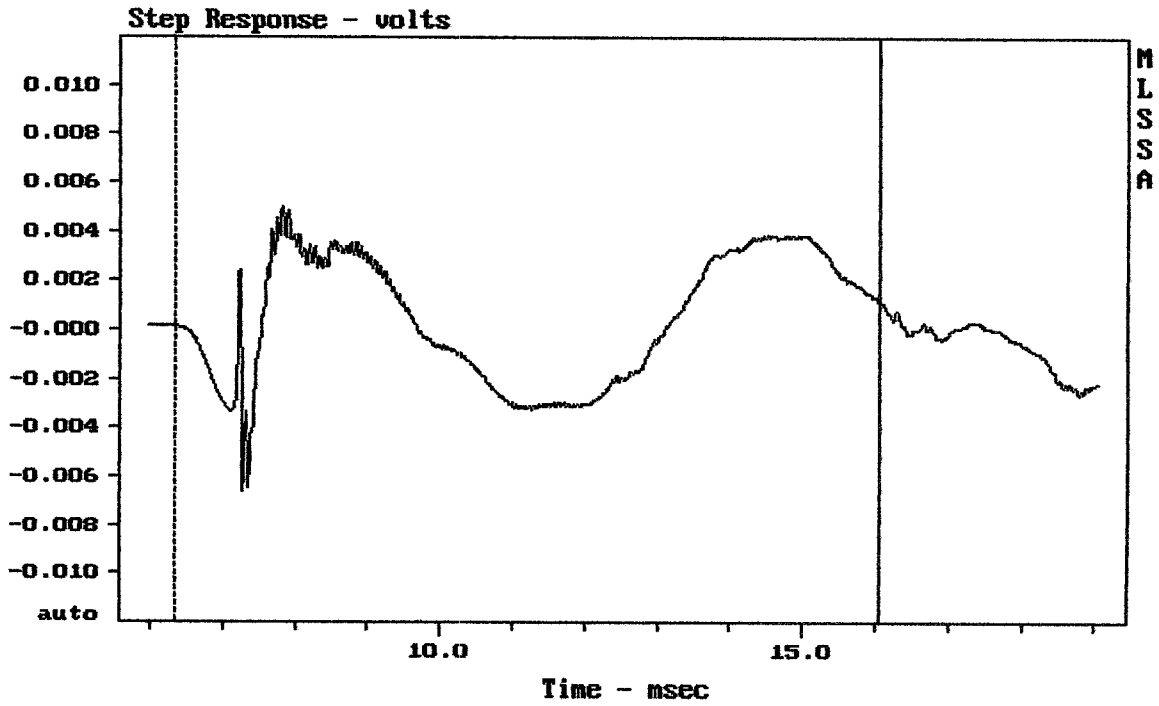
NX L24-A

MLSSA: Frequency Domain



-64.63 dB, 621 Hz (14), 1.980 msec (19)

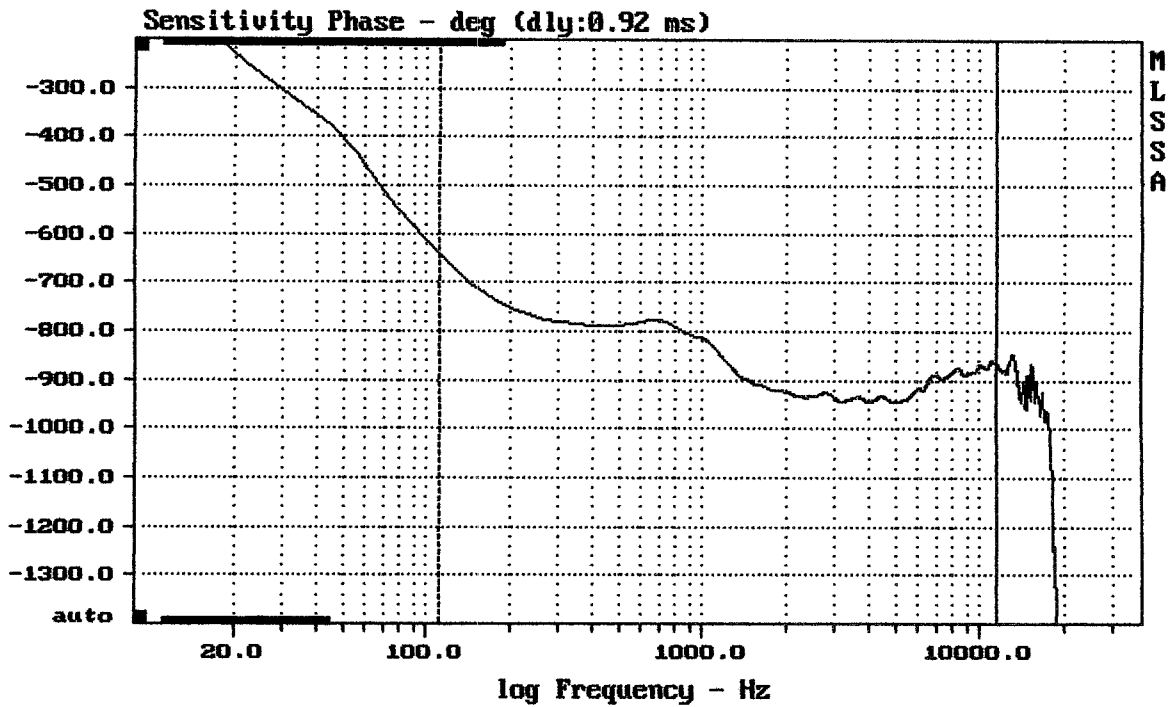
DTTO



mean: 0.0004707, rms: 0.002646, std: 0.002604, max: 0.005008, min: -0.006638

NX L24-A

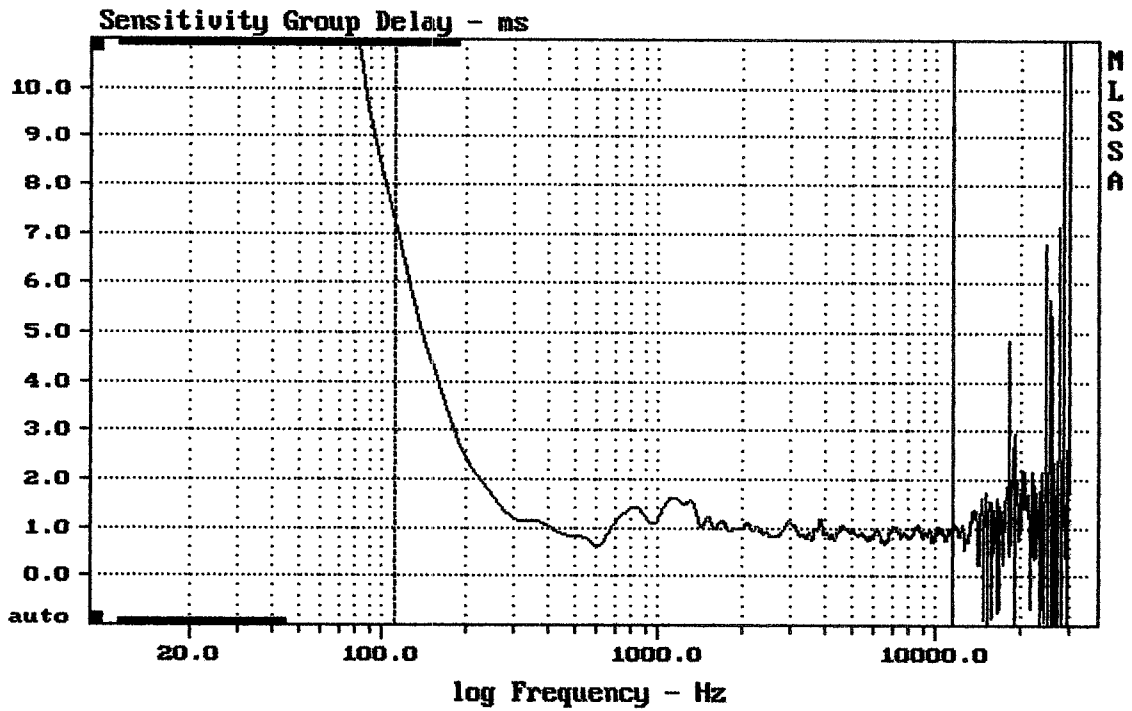
MLSSA: Time Domain



mean: -894.7, rms: 895.8, std: 44.95, max: -641.9, min: -945.1

NX L24-A

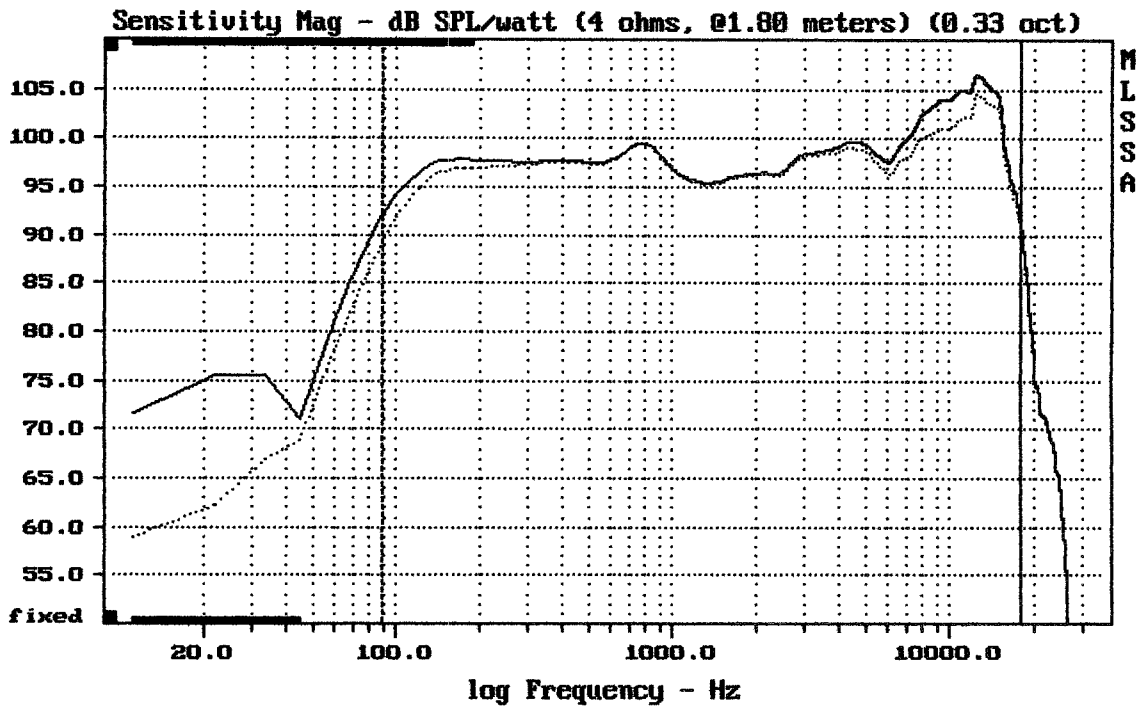
MLSSA: Frequency Domain



mean: 0.9769, rms: 1.054, std: 0.3959, max: 7.254, min: 0.6372

NX L24-A

MLSSA: Frequency Domain

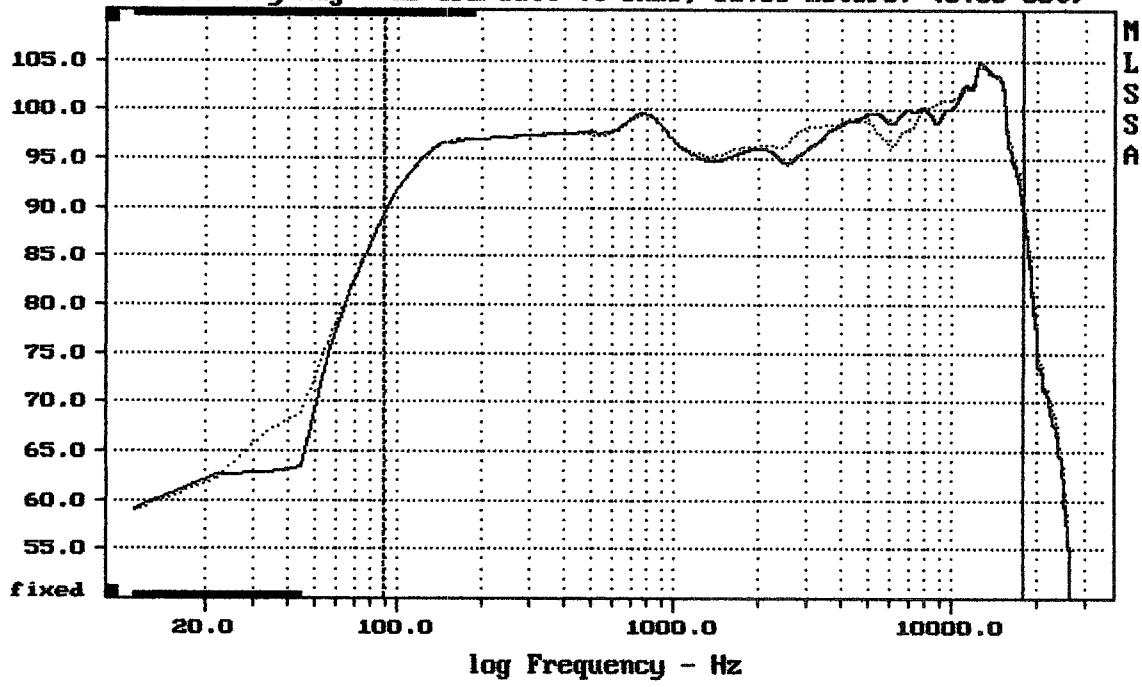


Overlay Compare: dev= +1.6/-1.3, std= 0.93, avg= 1.4

DTTO BOOST —

MLSSA: Frequency Domain

Sensitivity Mag - dB SPL/watt (4 ohms, @1.00 meters) (0.33 oct)

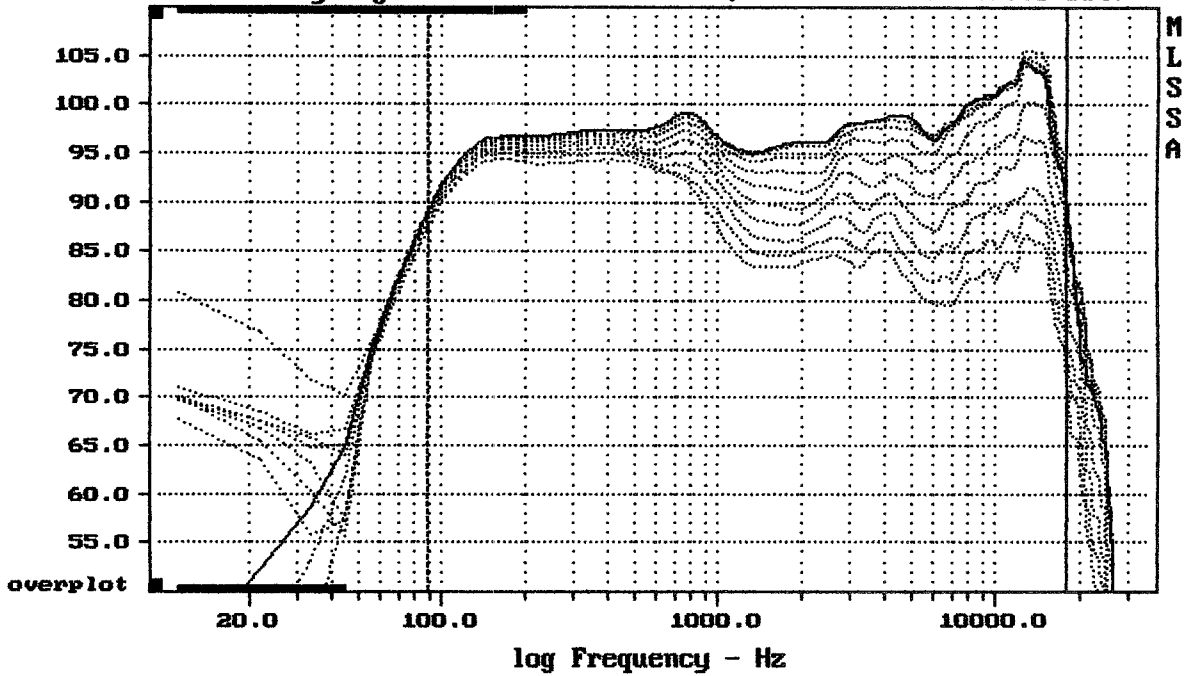


Overlay Compare: dev= +2.3/-2.4, std= 1, avg= -0.069

DTTO + GRIL ———

MLSSA: Frequency Domain

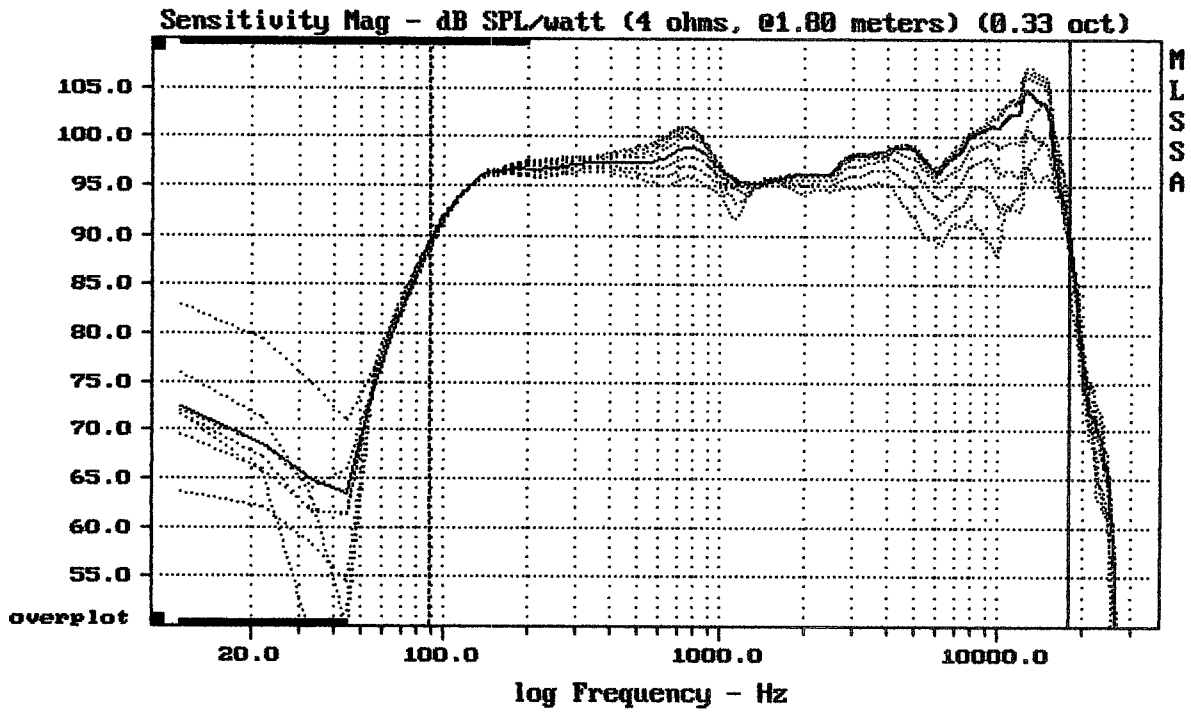
Sensitivity Mag - dB SPL/watt (4 ohms, @1.00 meters) (0.33 oct)



Overlay Compare: dev= +14/-3.1, std= 3.4, avg= -16

NX L24-A

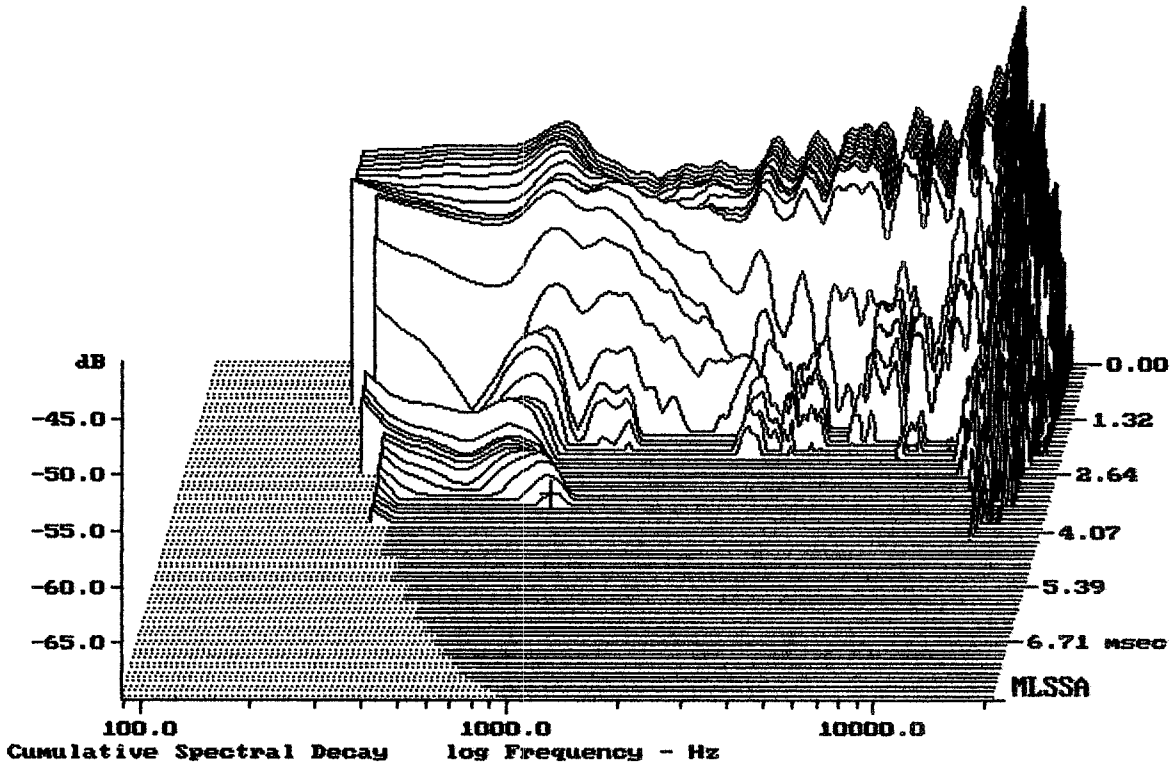
MLSSA: Frequency Domain



CURSOR: y = 86.6116 x = 18010.9192 (1623)

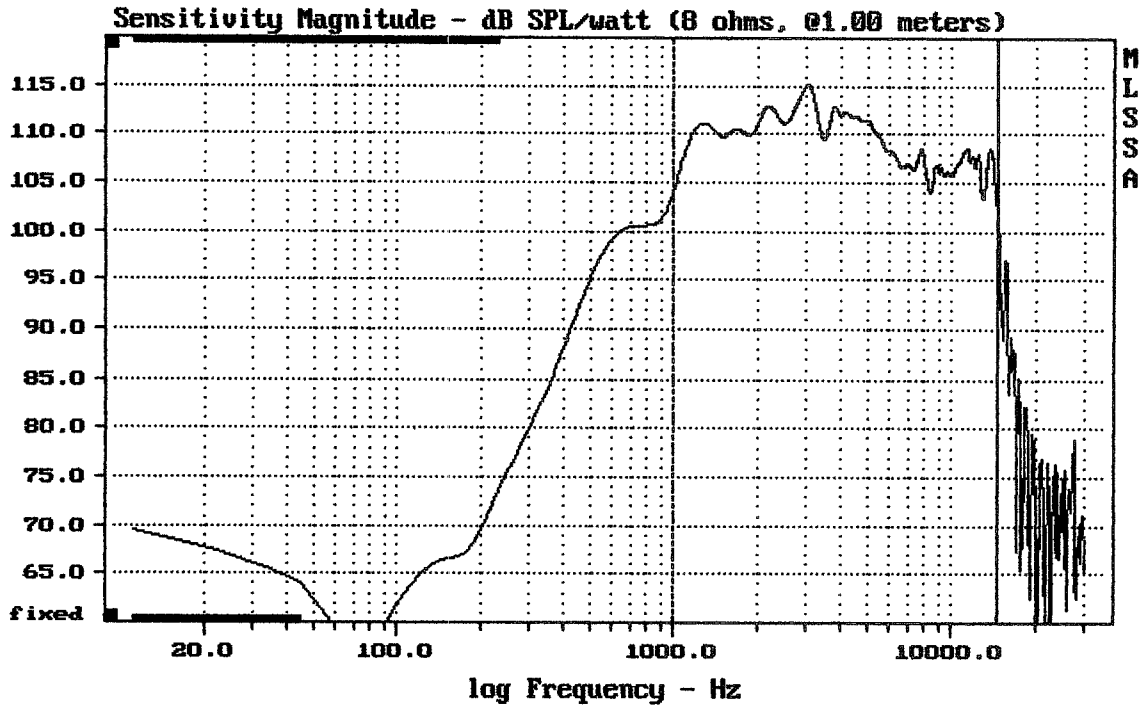
NX L24-A

MLSSA: Frequency Domain



-68.99 dB, 932 Hz (21), 3.410 msec (32)

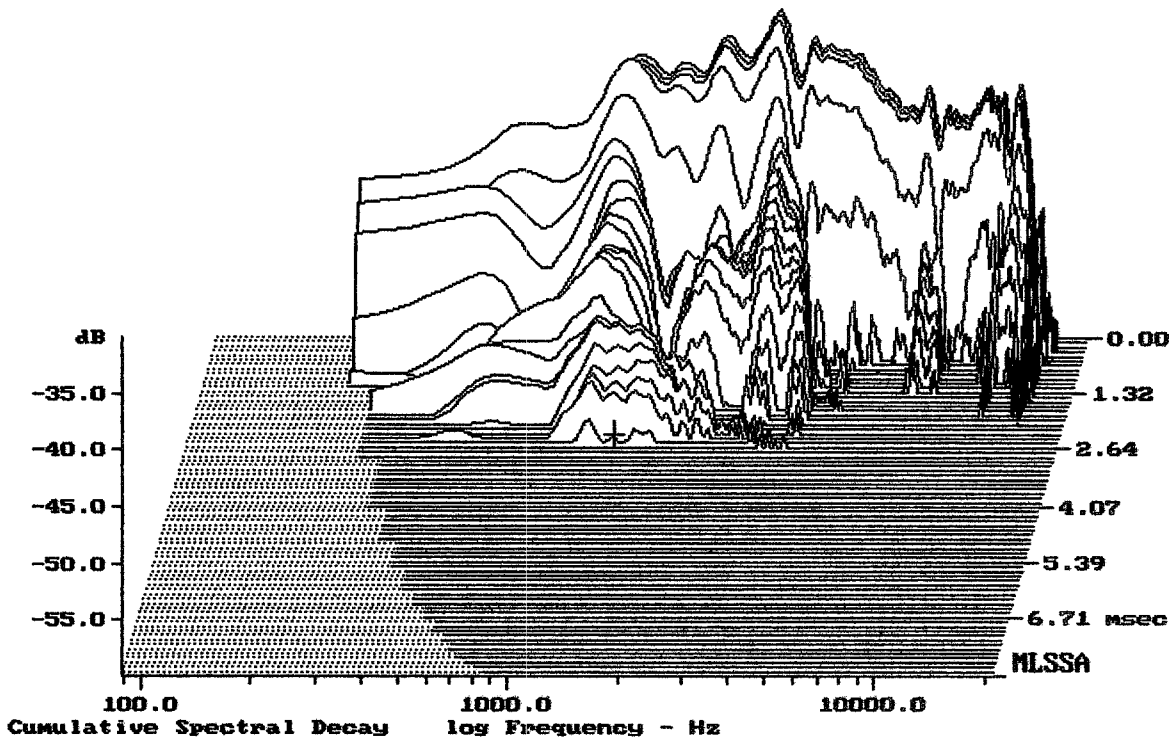
DTTO + GRIL



Level (999:14704 Hz) = 110.26 dB SPL/watt (8 ohms, @1.00 meters)

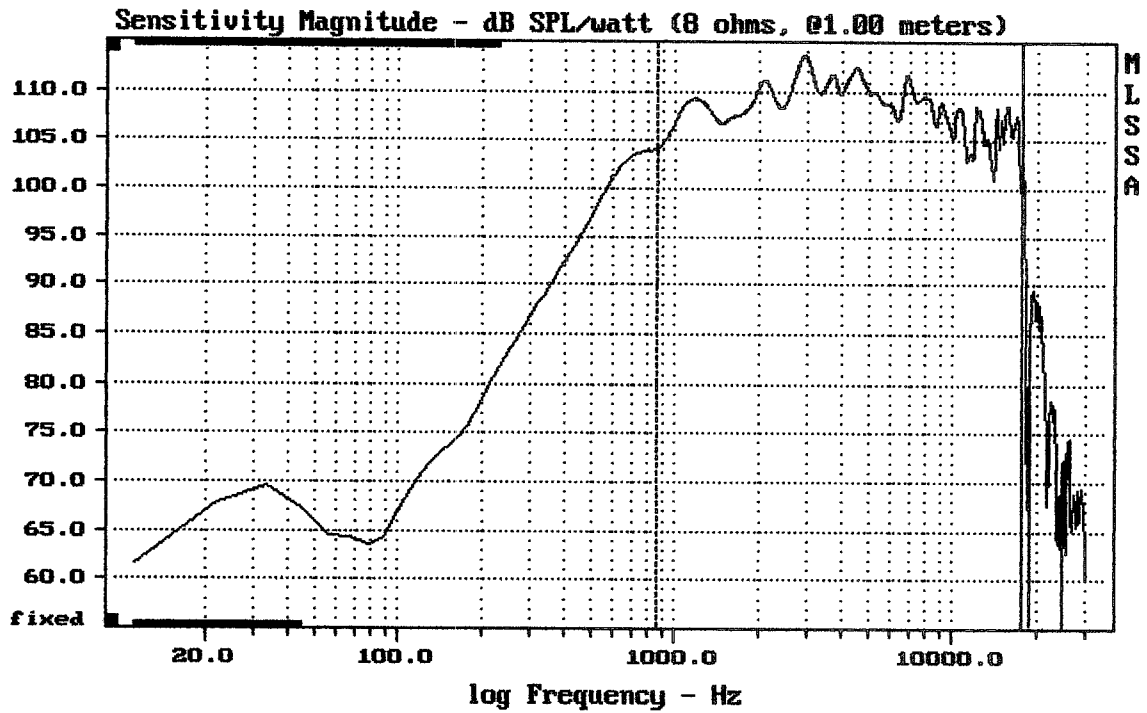
NX L24-A

MLSSA: Frequency Domain



-59.21 dB, 1287 Hz (29), 2.530 msec (24)

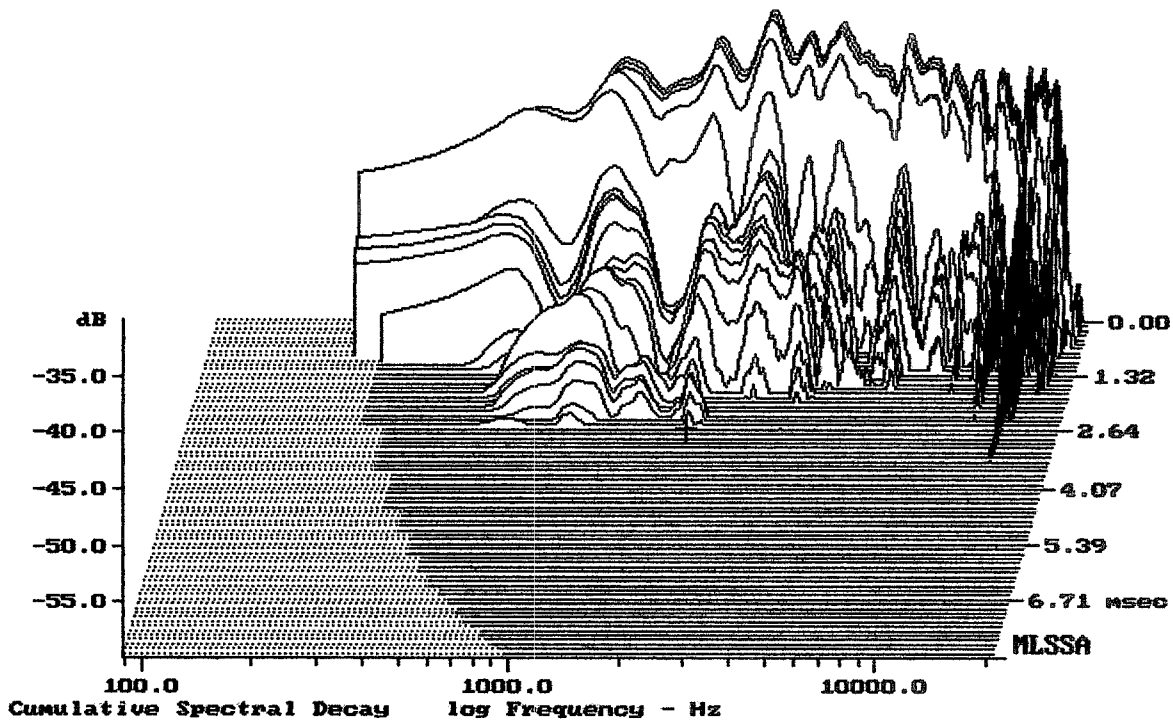
DITO



Level (854:17600 Hz) = 109.12 dB SPL/watt (8 ohms, @1.00 meters)

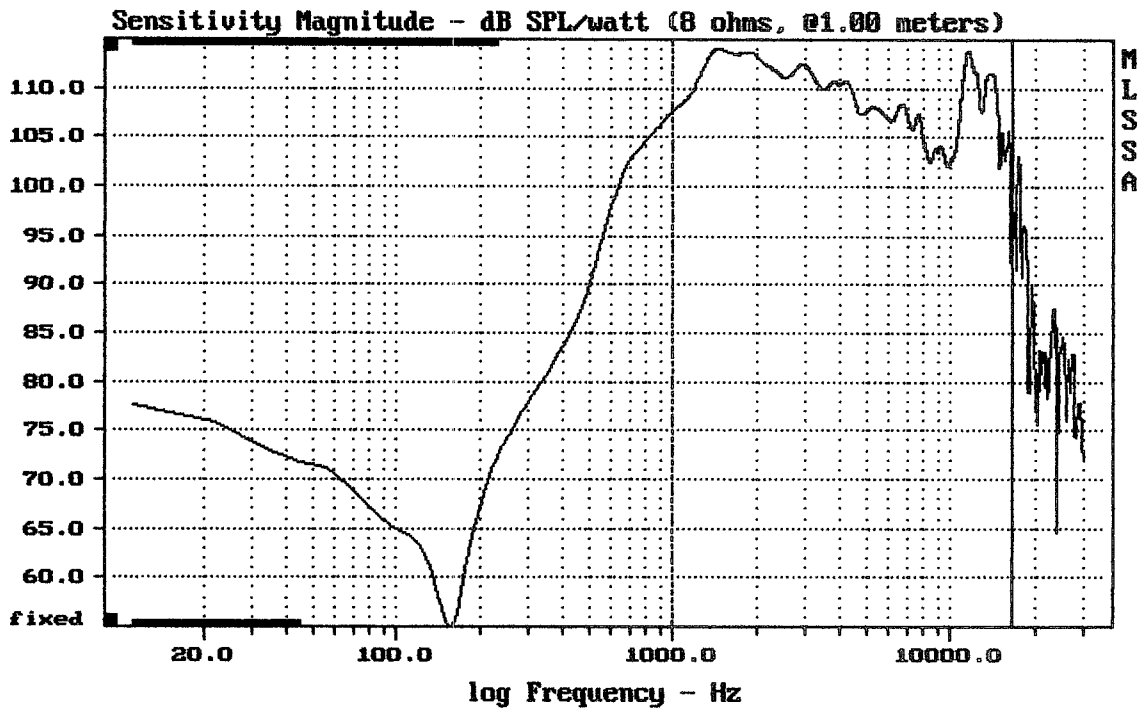
HORN NX L24-A + DE910

MLSSA: Frequency Domain



-59.85 dB, 2042 Hz (46), 2.640 msec (25)

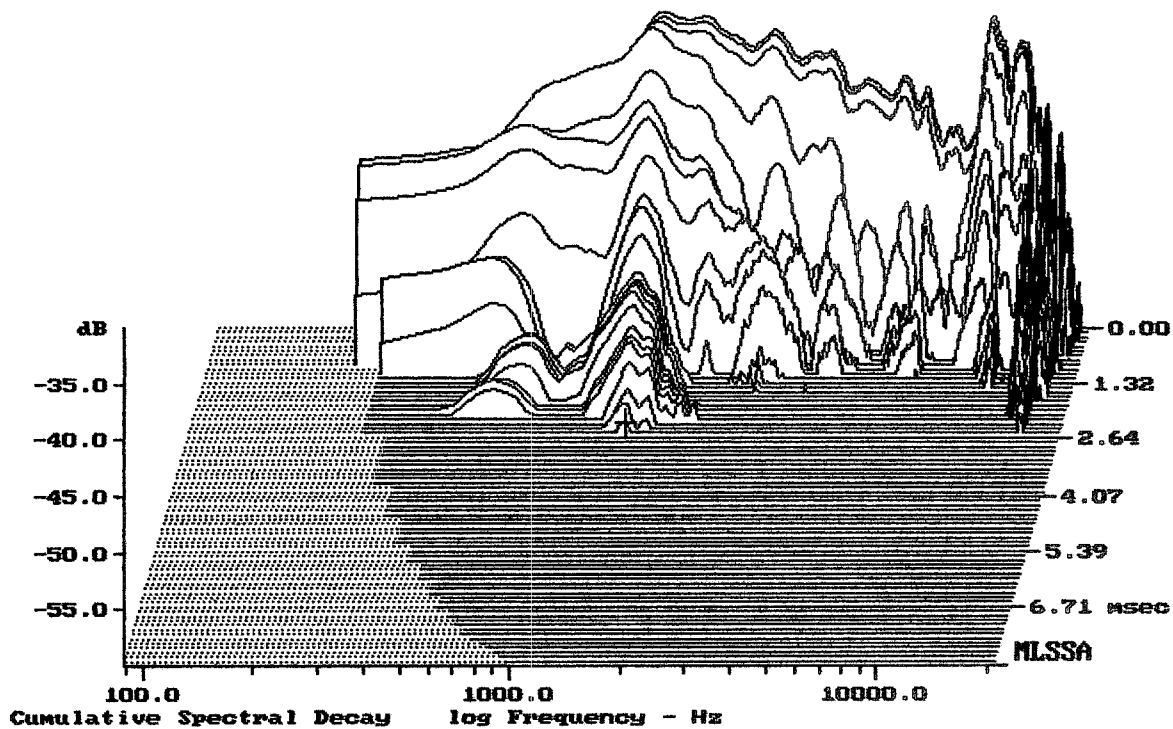
DTTO



Level (999:16502 Hz) = 110.56 dB SPL/watt (8 ohms, @1.00 meters)

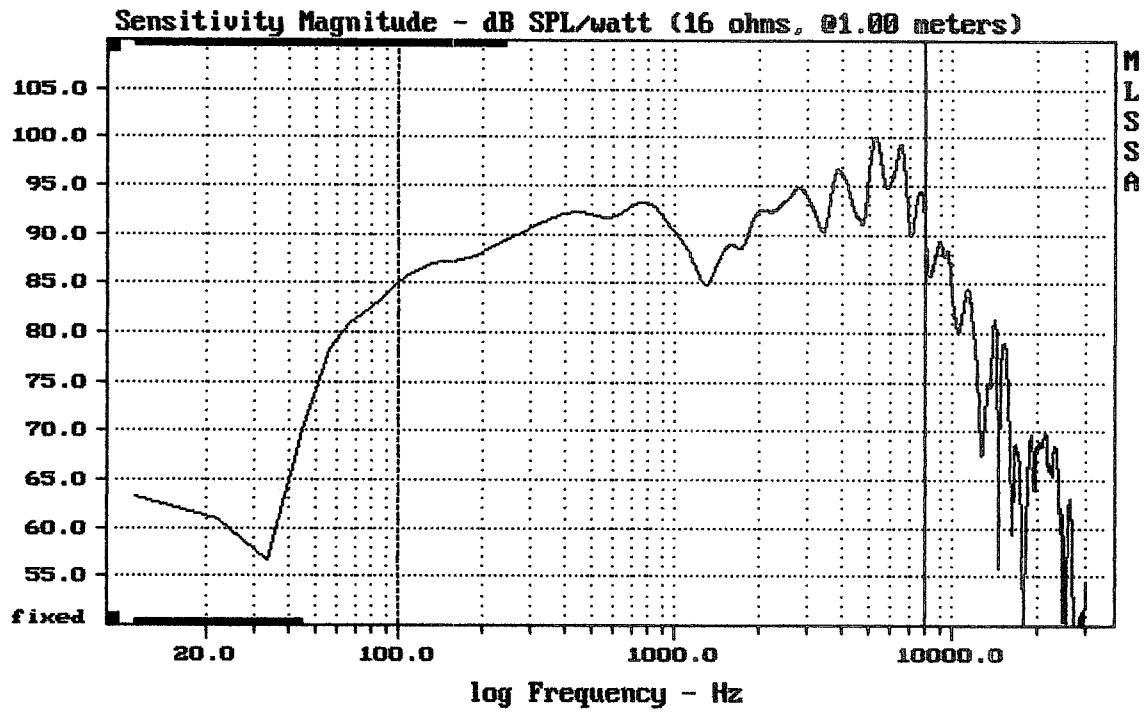
DRIVER NX L24-A + ME90

MLSSA: Frequency Domain



-59.10 dB, 1376 Hz (31), 2.530 msec (24)

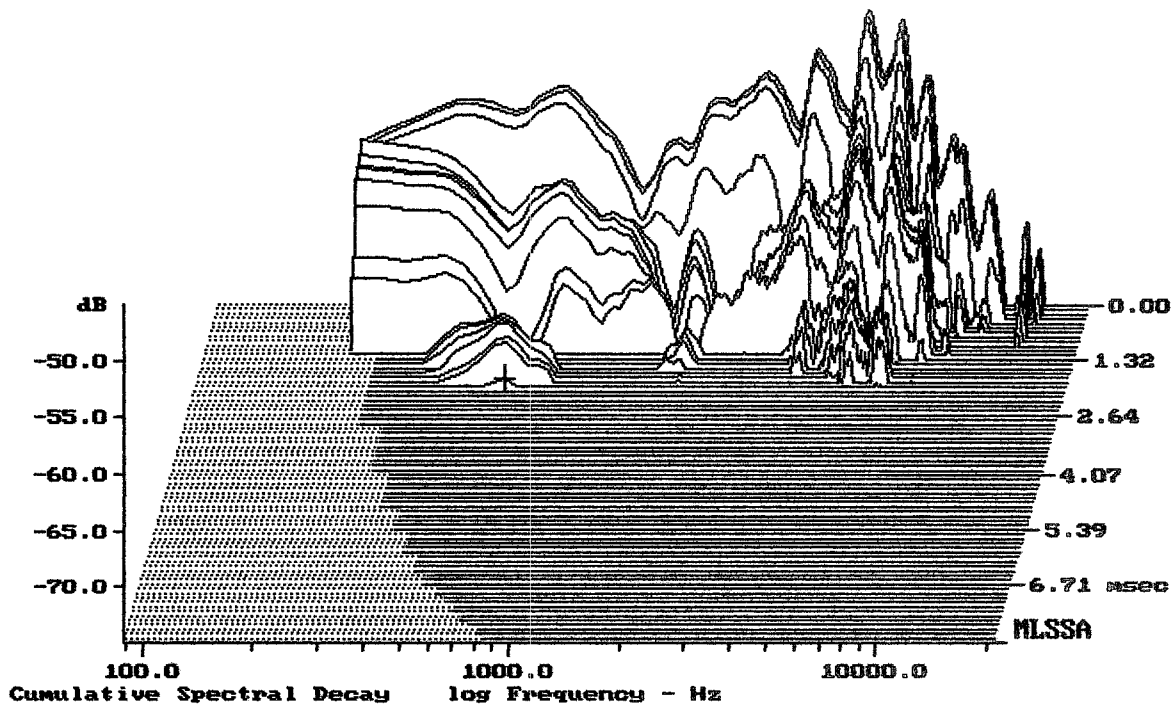
DTIO



Level (100:8001 Hz) = 92.23 dB SPL/watt (16 ohms, @1.00 meters)

NX L24-A

MLSSA: Frequency Domain



-74.26 dB, 621 Hz (14), 1.980 msec (19)

DTTO

Measured Data

QC Limits

Line	Parameter	Value	Units
1	RMSE-free	1.04	Ohms
2	Fs	90.62	Hz
3	Re	14.31	Ohms[dc]
4	Res	336.05	Ohms
5	Qms	11.23	
6	Qes	0.48	
7	Qts	0.46	
8	L1	0.78	mH
9	L2	1.32	mH
10	R2	6.02	Ohms
11	RMSE-load	1.18	Ohms
12	Vas(Sd)	9.48	liters
13	Mms	9.36	grams
14	Cms	330	$\mu\text{M}/\text{Newton}$
15	B1	12.63	Tesla-M
16	SPLref(Sd)	93.5	dB[Re]
17	Rub-index	0.01	

Method: Mass-loaded (10.00 grams)

Area (Sd): 143.14 sq cm

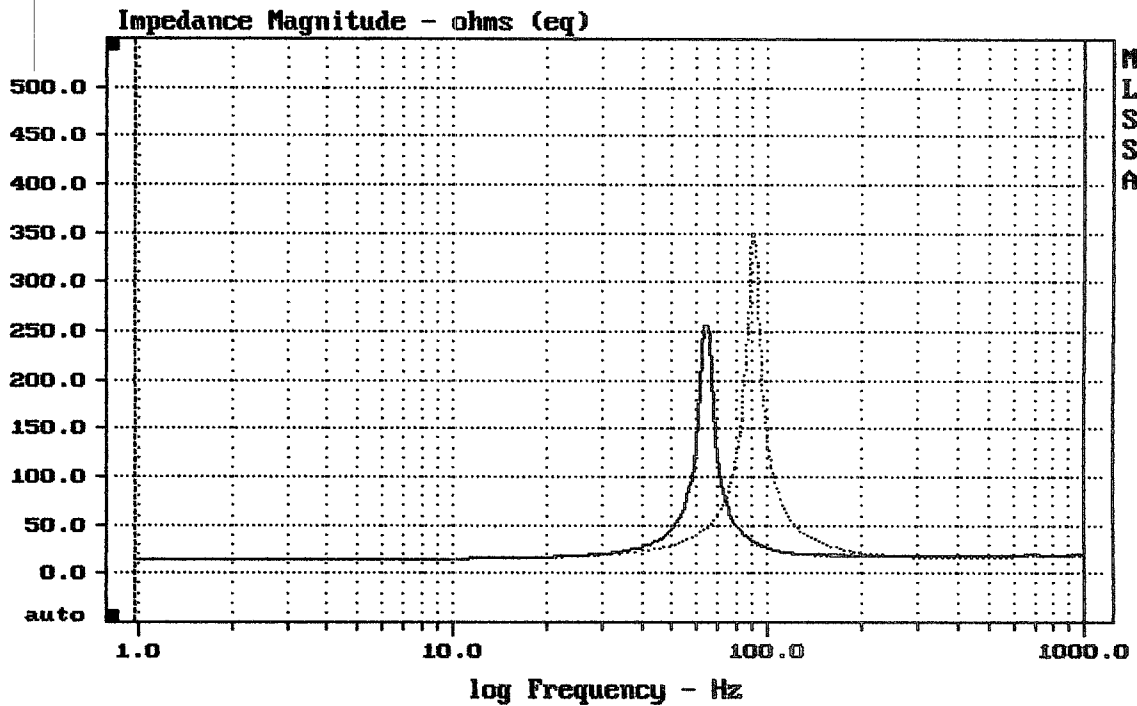
DCR mode: Measure (-0.12 ohms)

QC file: CLOSED

Analysis successful. Shift in Fs = -29.3% (-20% to -50% is recommended).

6" NX L24-A

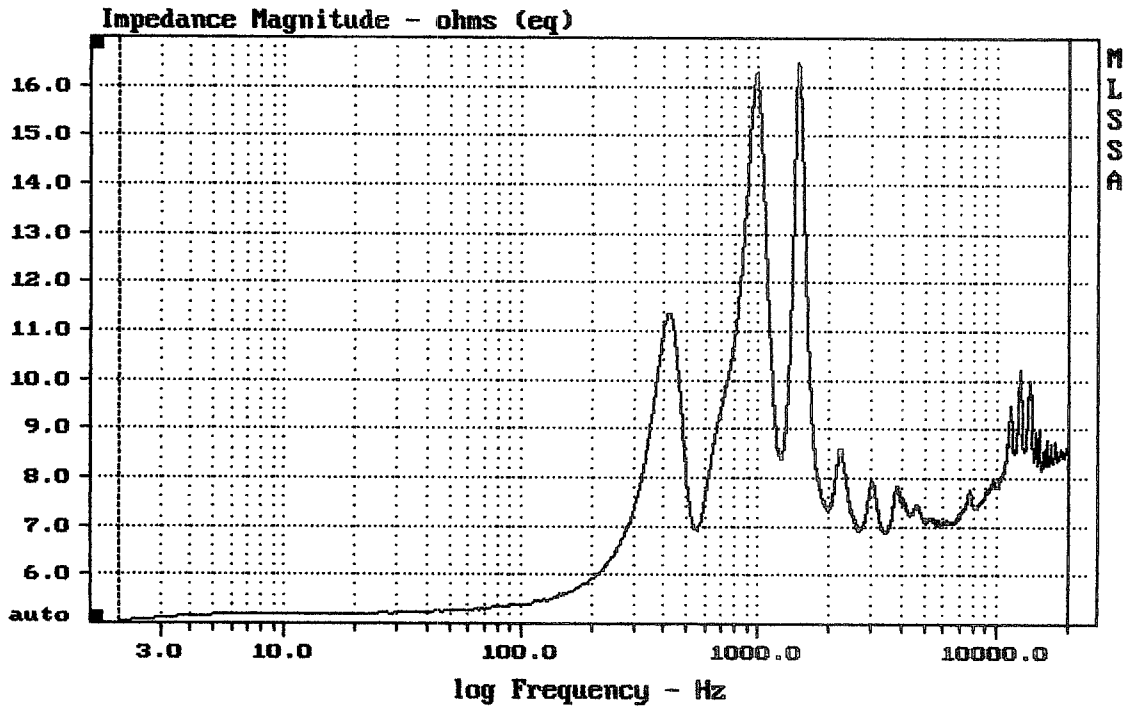
MLSSA: Parameters



mean: 25.47, rms: 42.28, std: 33.75, max: 351.5, min: 14.32

DTTO

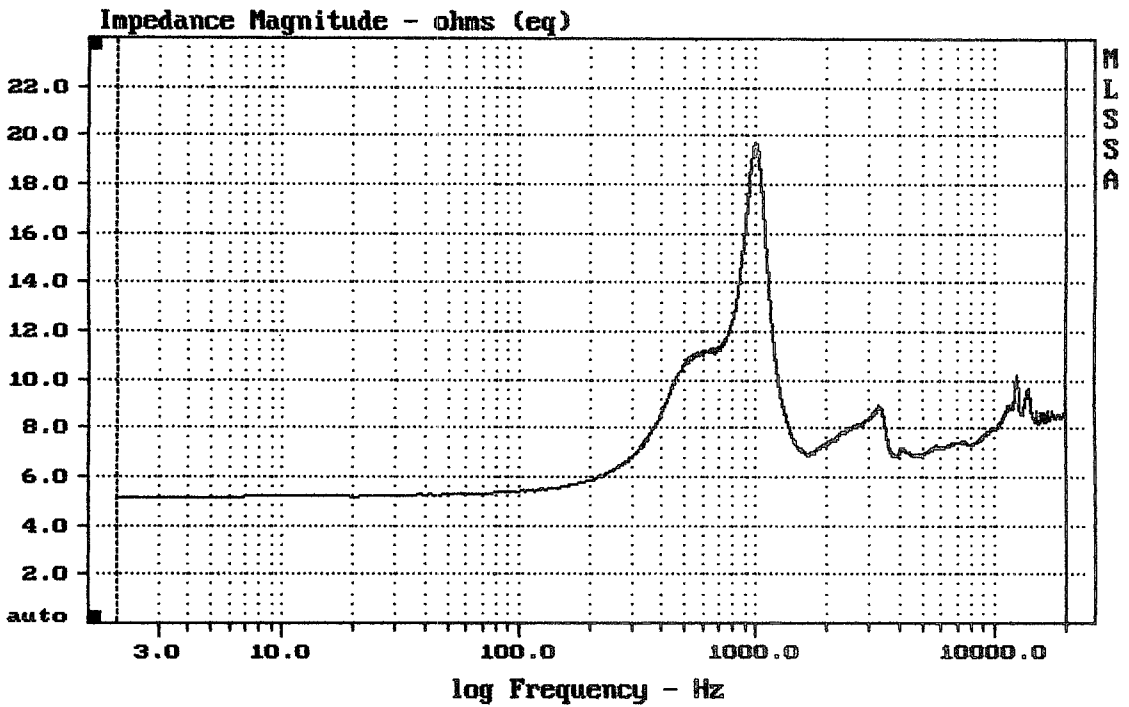
MLSSA: Frequency Domain



mean: 8.257, rms: 8.358, std: 1.296, max: 16.48, min: 5.028

NX L24-A

MLSSA: Frequency Domain



mean: 8.285, rms: 8.41, std: 1.443, max: 19.69, min: 5.139

DYTO DRIVER

MLSSA: Frequency Domain