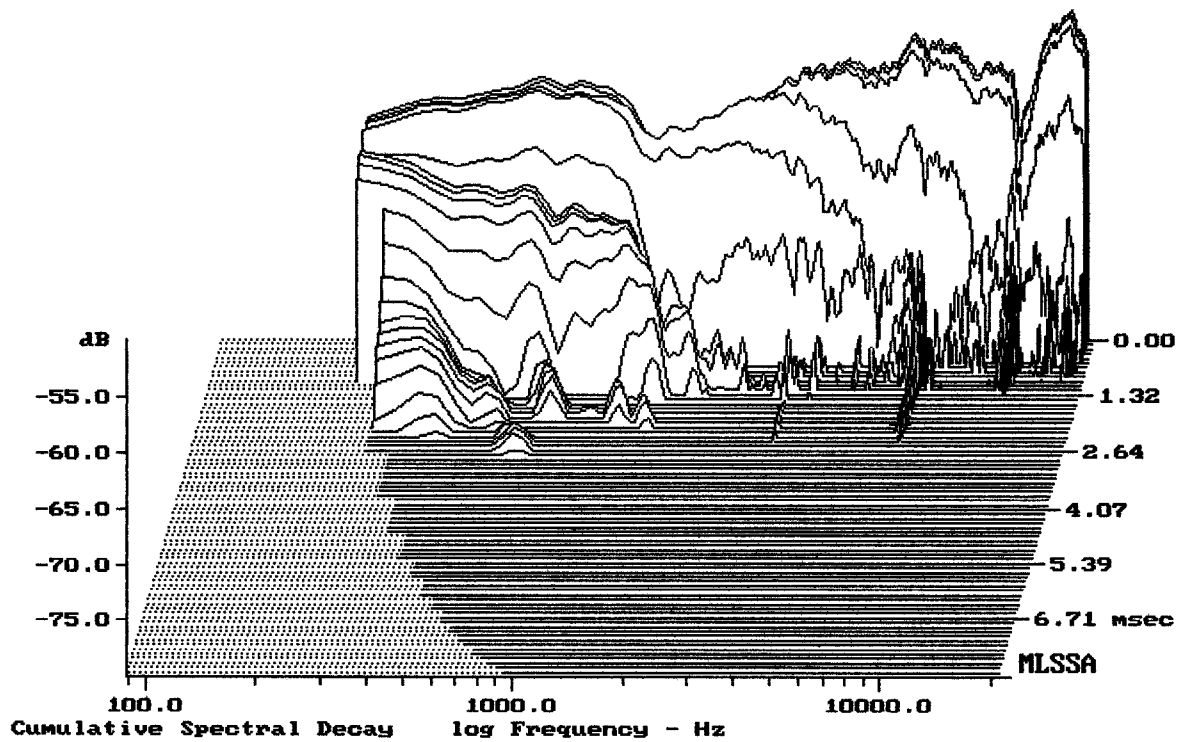


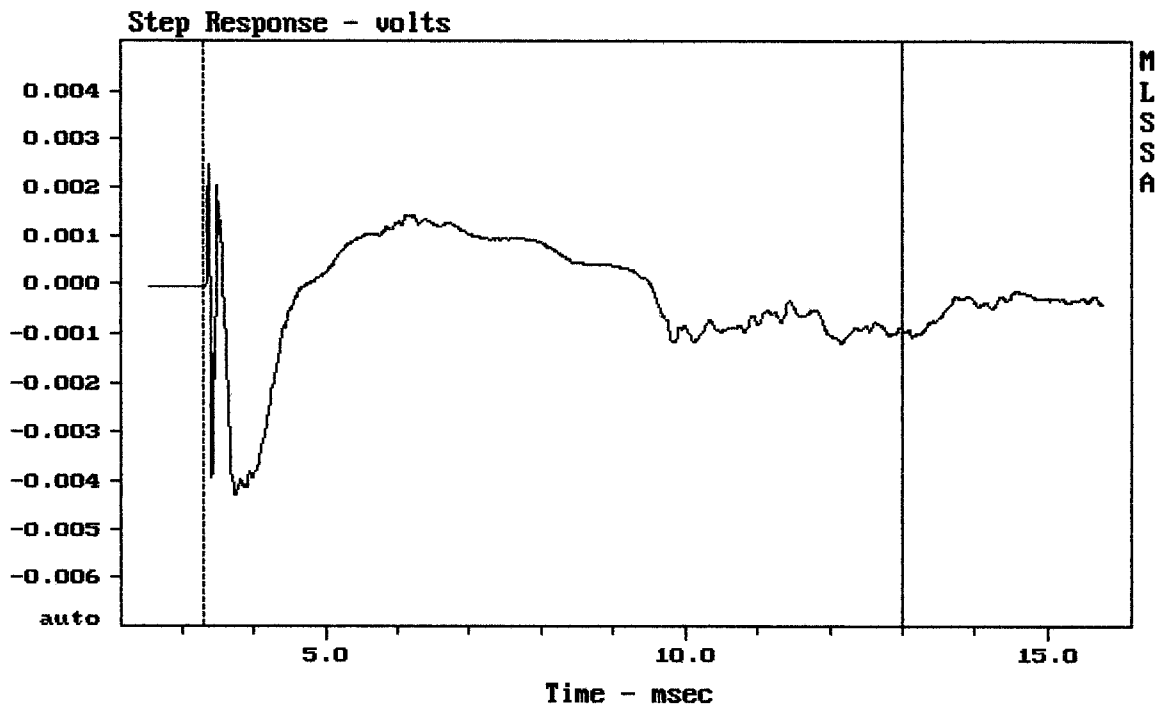
mean: 88.99, rms: 89.40, std: 2.38, max: 93.71, min: 76.65

MACKIE HR624 MK2

MLSSA: Frequency Domain



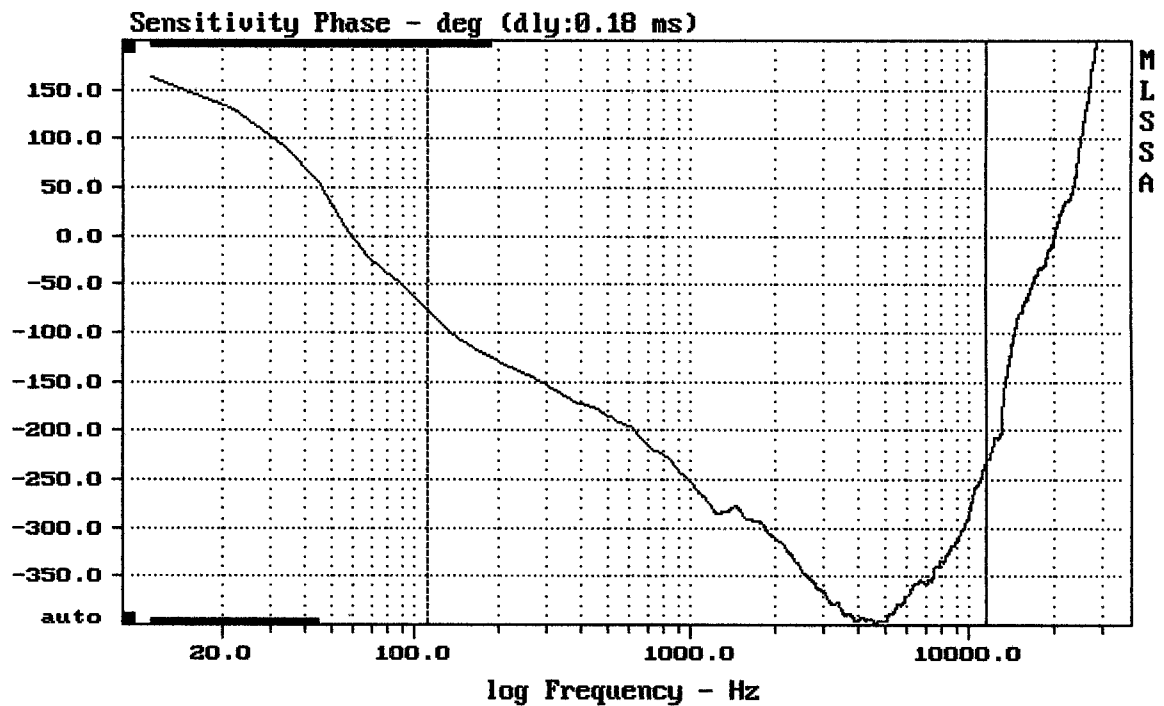
-79.23 dB, 7369 Hz (166), 2.200 msec (21)



mean: -0.0001763, rms: 0.001266, std: 0.001254, max: 0.002481, min: -0.004278

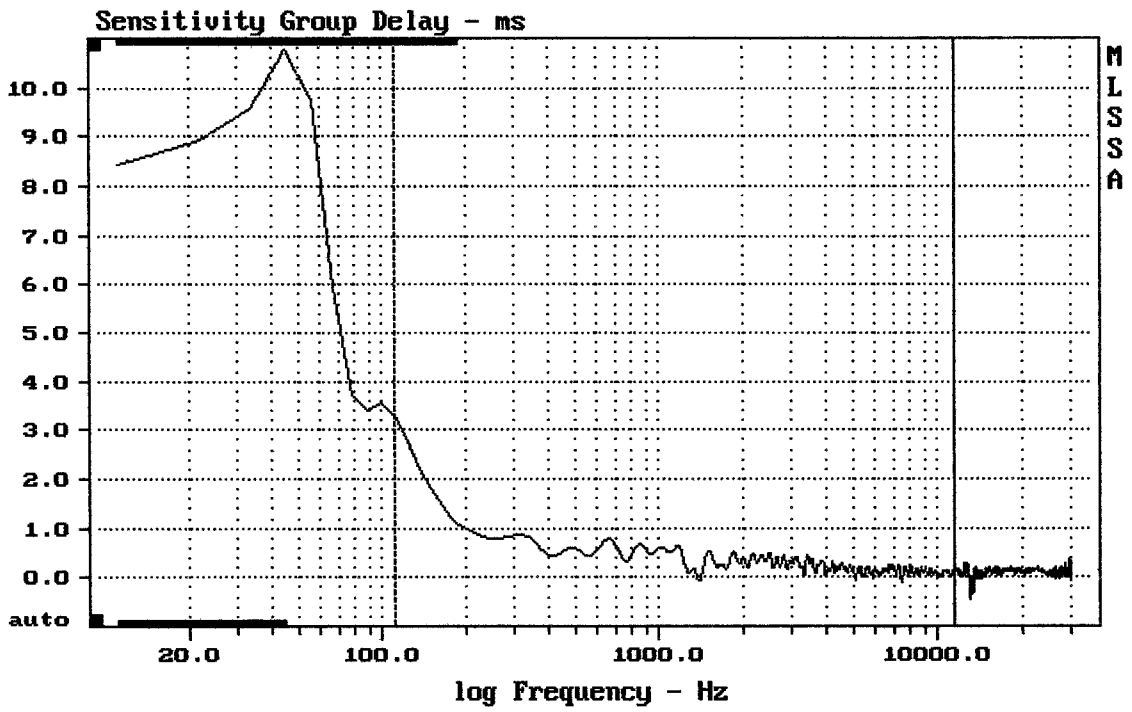
MACKIE HR624 MK2

MLSSA: Time Domain



mean: -322.4, rms: 328.1, std: 60.73, max: -76.23, min: -397.5

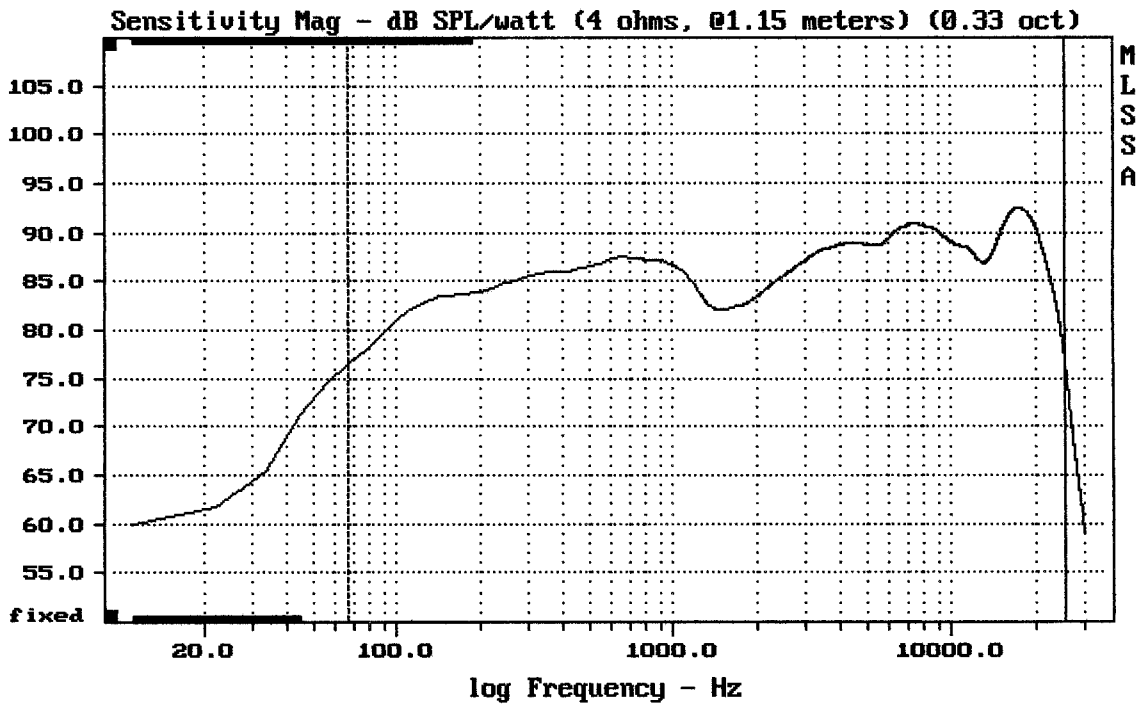
MACKIE HR624 MK2



mean: 0.2196, rms: 0.3267, std: 0.2418, max: 3.298, min: -0.1193

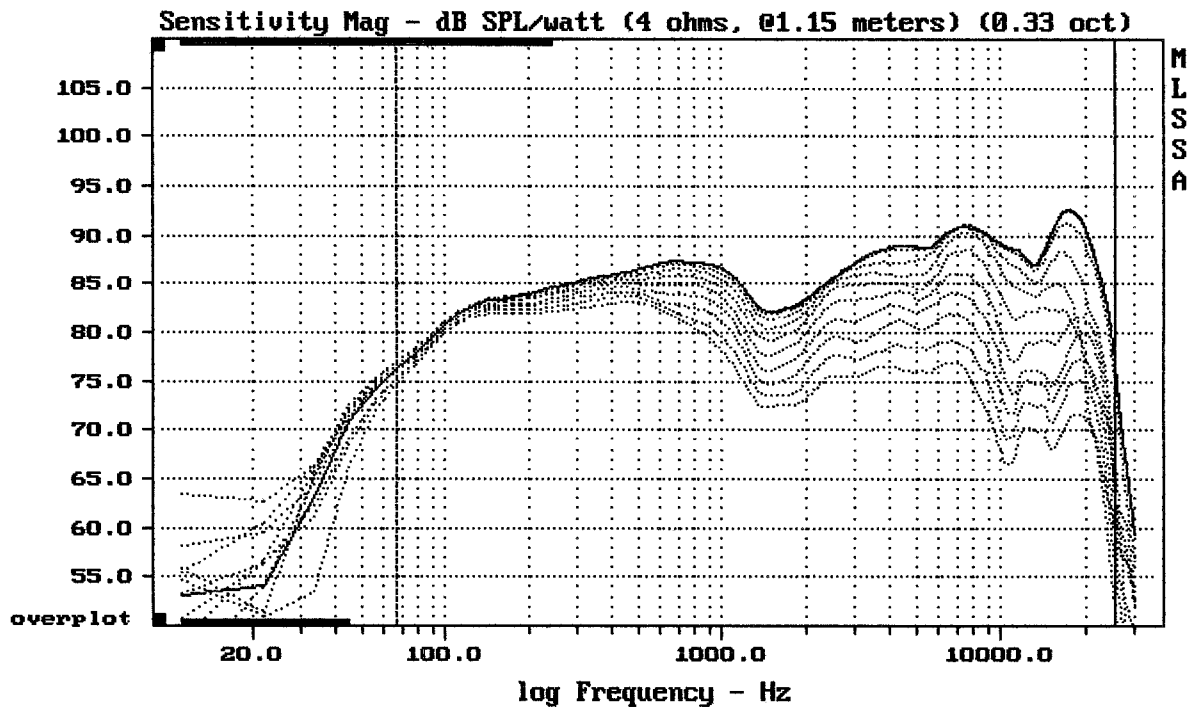
MACKIE HR624 MK2

MLSSA: Frequency Domain



Level (67:25502 Hz) = 87.04 dB SPL/watt (4 ohms, 0.15 meters) (0.33 oct)

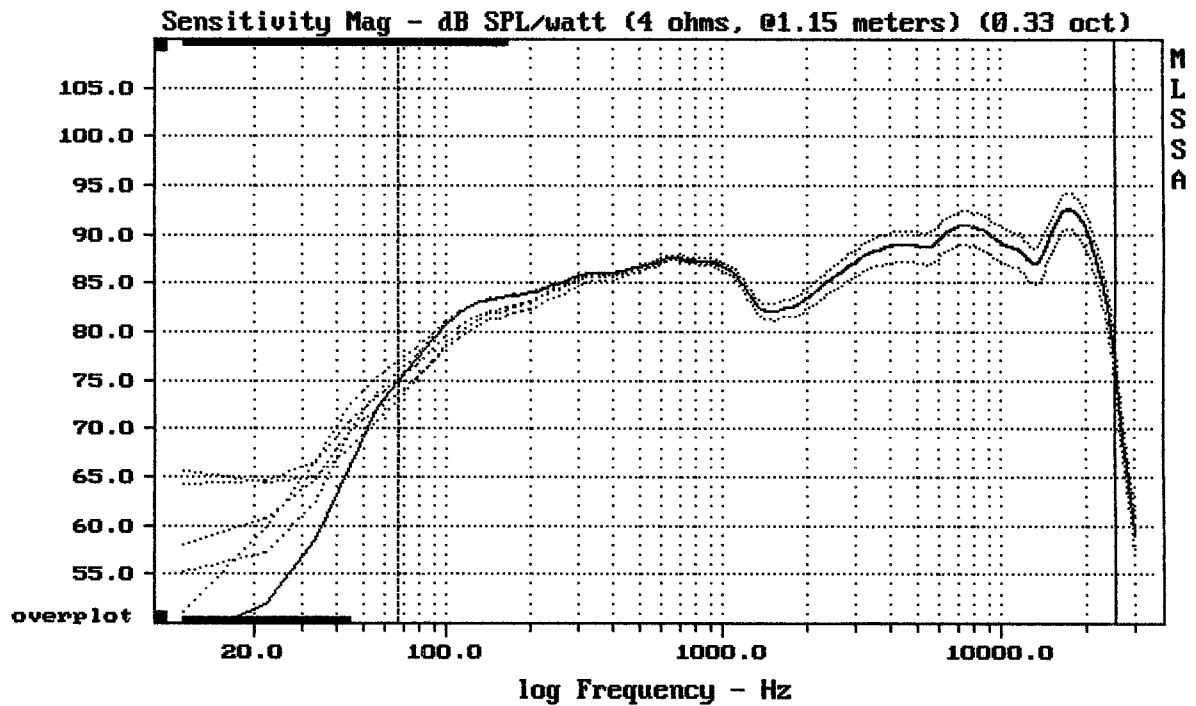
MACKIE HR624 MK2



Overlay Compare: dev= +17/-7.6, std= 4.9, avg= -18

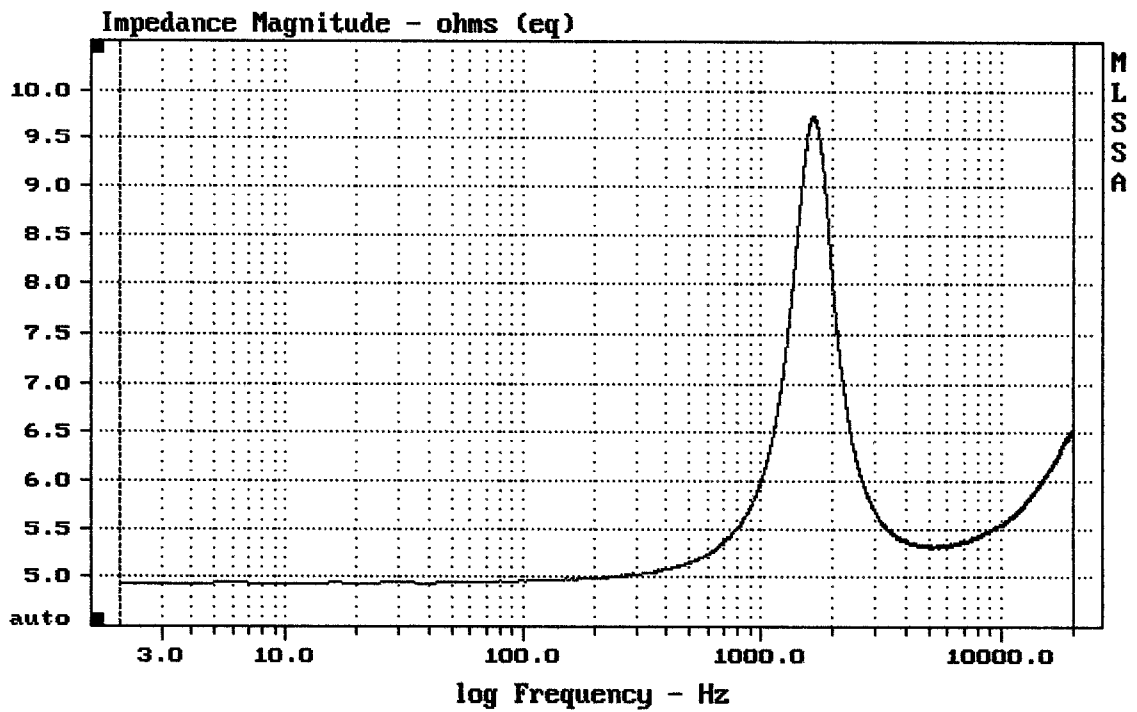
MACKIE HR624 MK2

MLSSA: Frequency Domain



Overlay Compare: dev= +0.17/-1.5, std= 0.32, avg= 1.4

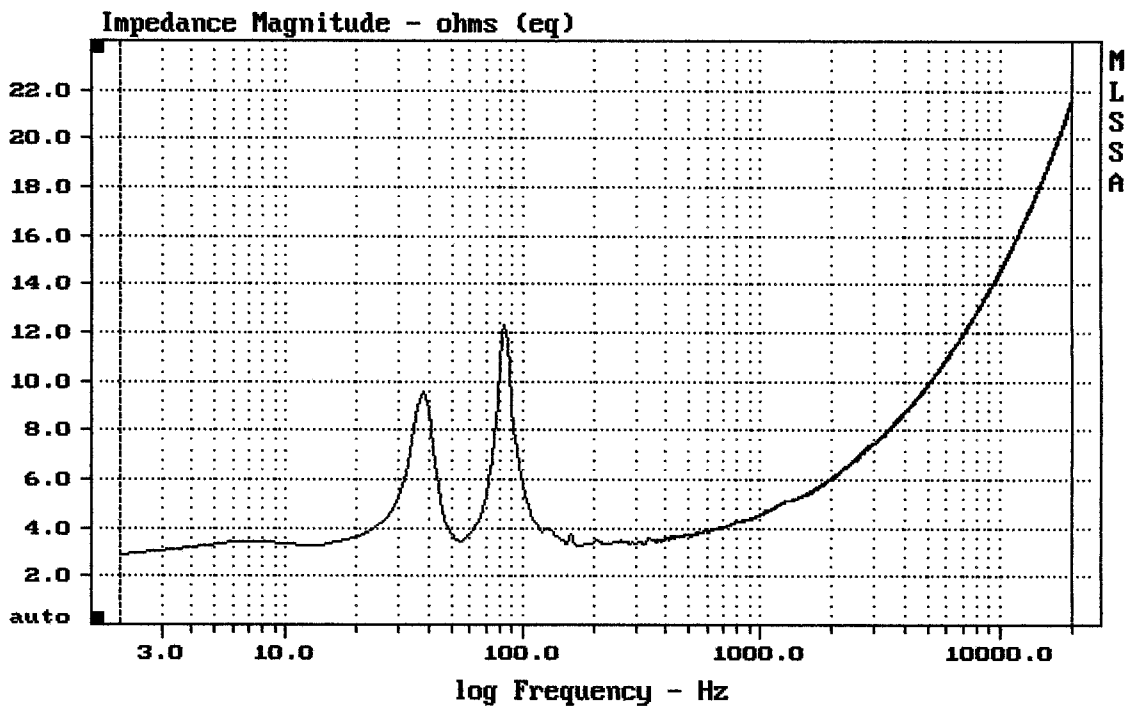
MACKIE HR624 MK2



mean: 5.899, rms: 5.945, std: 0.7398, max: 9.747, min: 4.93

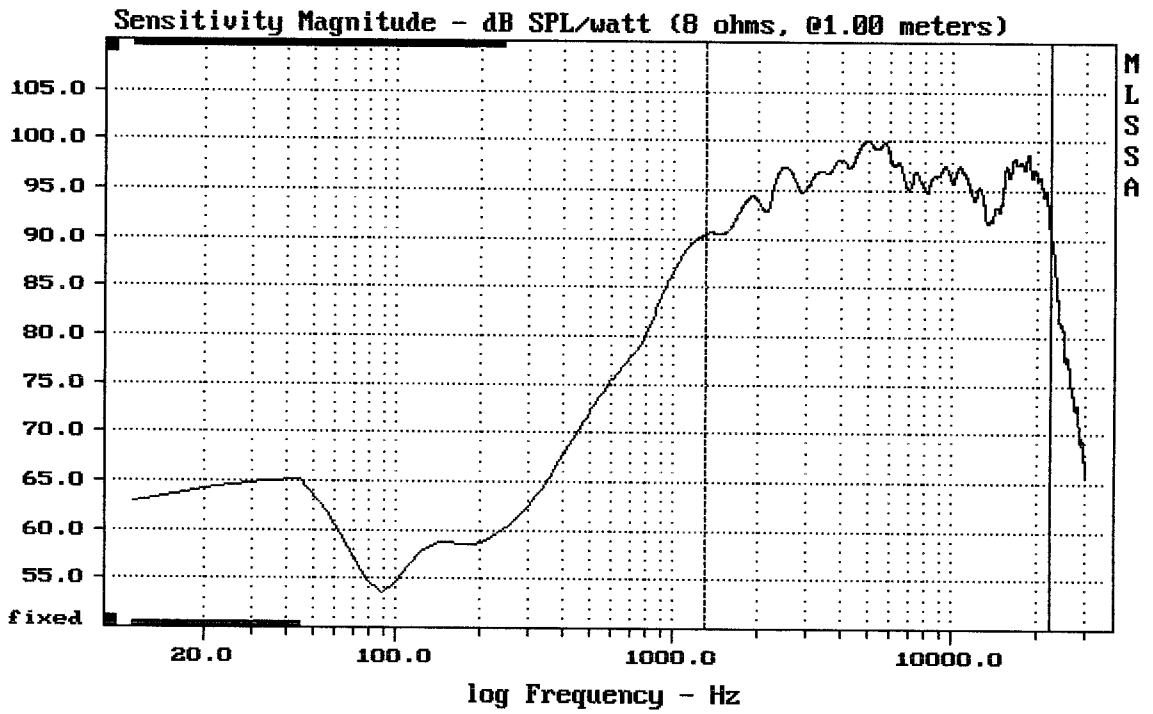
MACKIE HR624 MK2

MLSSA: Frequency Domain



mean: 13.85, rms: 14.76, std: 5.104, max: 21.7, min: 2.884

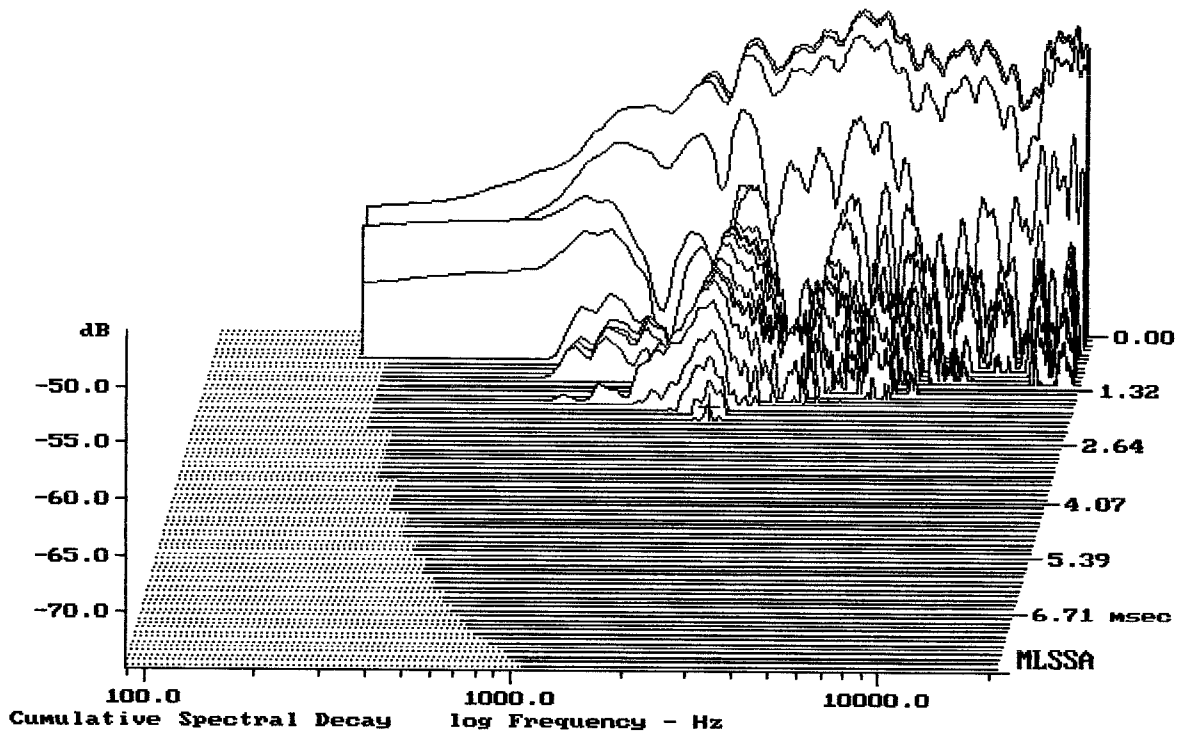
MACKIE HR624 MK2



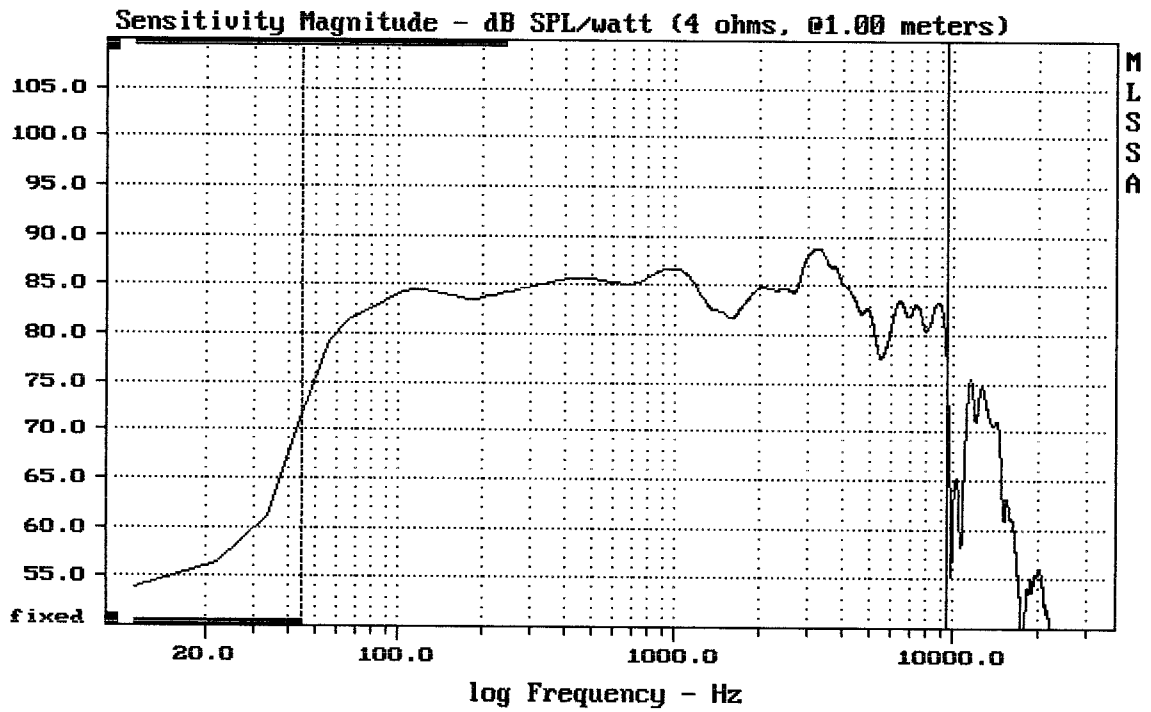
Level (1298:22605 Hz) = 96.39 dB SPL/watt (8 ohms, @1.00 meters)

TWEETER FROM HR624 MK2

MLSSA: Frequency Domain



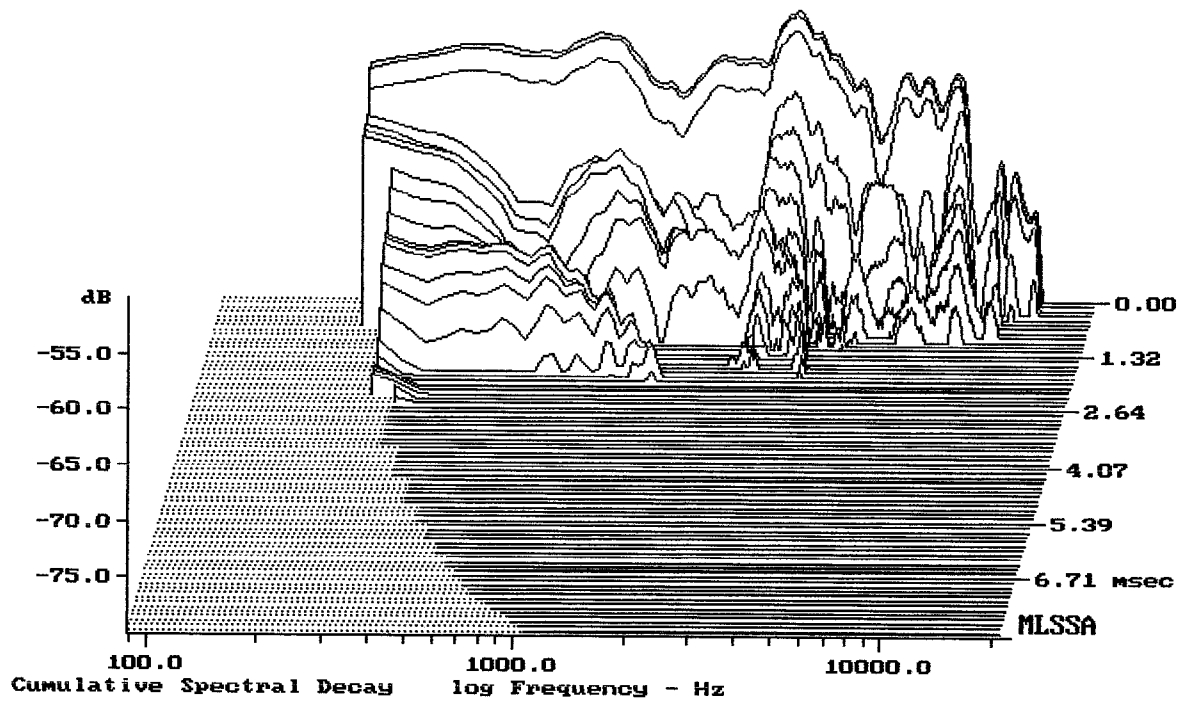
-73.84 dB, 2219 Hz (50), 2.090 msec (20)



Level (44:9499 Hz) = 84.24 dB SPL/watt (4 ohms, @1.00 meters)

6" FROM MACKIE HR624 MK2

MLSSA: Frequency Domain



-77.99 dB, 2797 Hz (63), 1.650 msec (16)

Measured Data

QC Limits

Line	Parameter	Value	Units
1	RMSE-free	0.08	Ohms
2	Fs	47.00	Hz
3	Re	2.93	Ohms[dc]
4	Res	15.45	Ohms
5	Qms	3.96	
6	Qes	0.75	
7	Qts	0.63	
8	L1	0.26	mH
9	L2	0.29	mH
10	R2	1.48	Ohms
11	RMSE-load	0.06	Ohms
12	Vas(Sd)	18.41	liters
13	Mms	15.41	grams
14	Cms	744	$\mu\text{M}/\text{Newton}$
15	Bl	4.22	Tesla-M
16	SPLref(Sd)	85.9	dB[Re]
17	Rub-index	0.00	

Method: Mass-loaded (10.00 grams)

Area (Sd): 132.73 sq cm

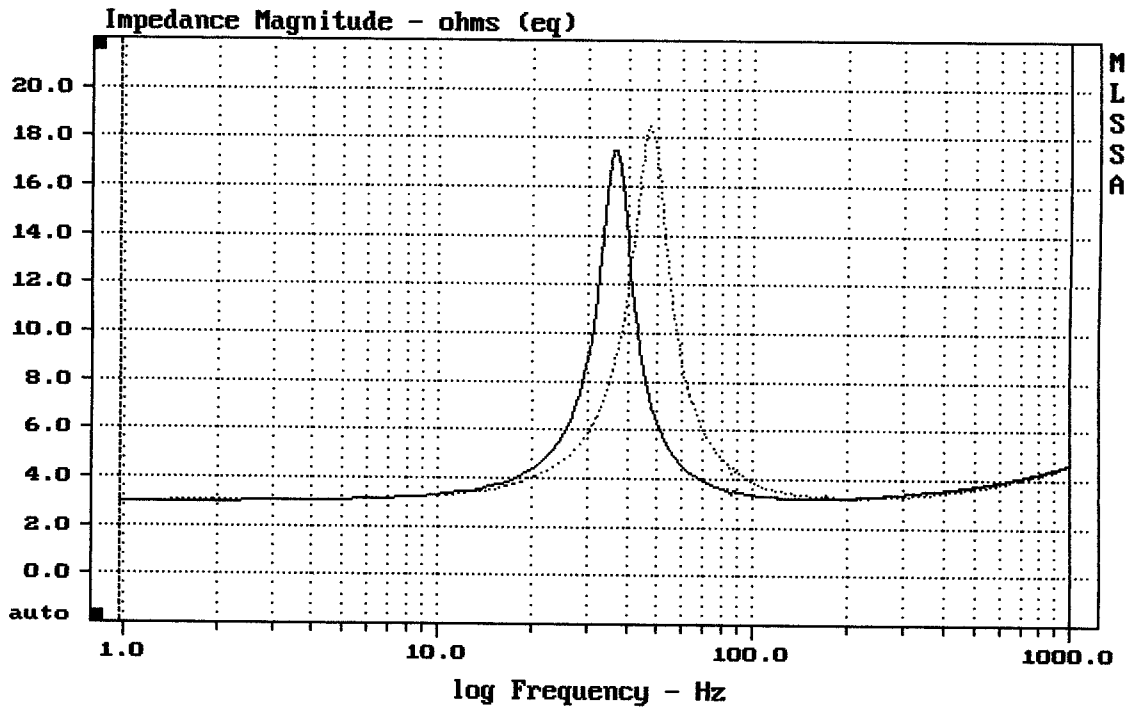
DCR mode: Measure (-0.09 ohms)

QC file: CLOSED

Analysis successful. Shift in Fs = -22.0% (-20% to -50% is recommended).

6" 2503 0100 0138 FROM MACKIE HR624 MK2

MLSSA: Parameters



mean: 4.105, rms: 4.43, std: 1.666, max: 18.49, min: 3.025

MLSSA: Frequency Domain