

Sestava: 2x CIARE COD + SELENIUM D3300Ti 16 + EMINENCE HE2A

Osazení:

- CIARE COD

<http://eshop.prodance.cz/cod-8-ohm/d-90805/>

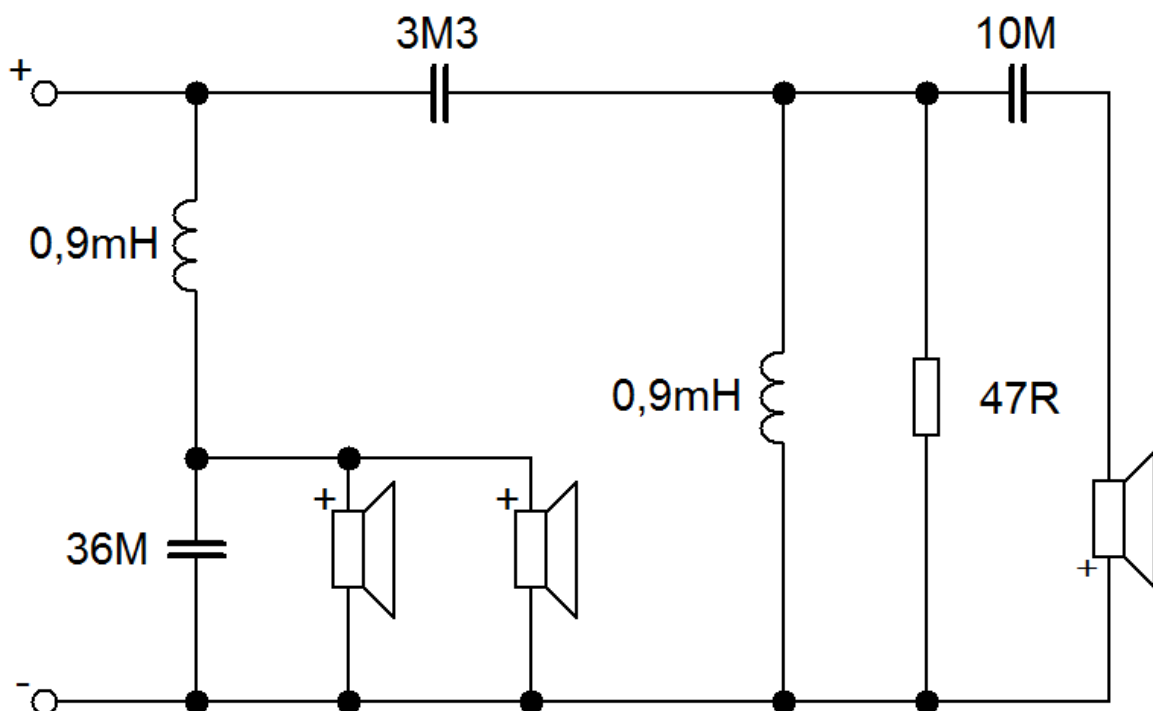
- SELENIUM D3300Ti 16

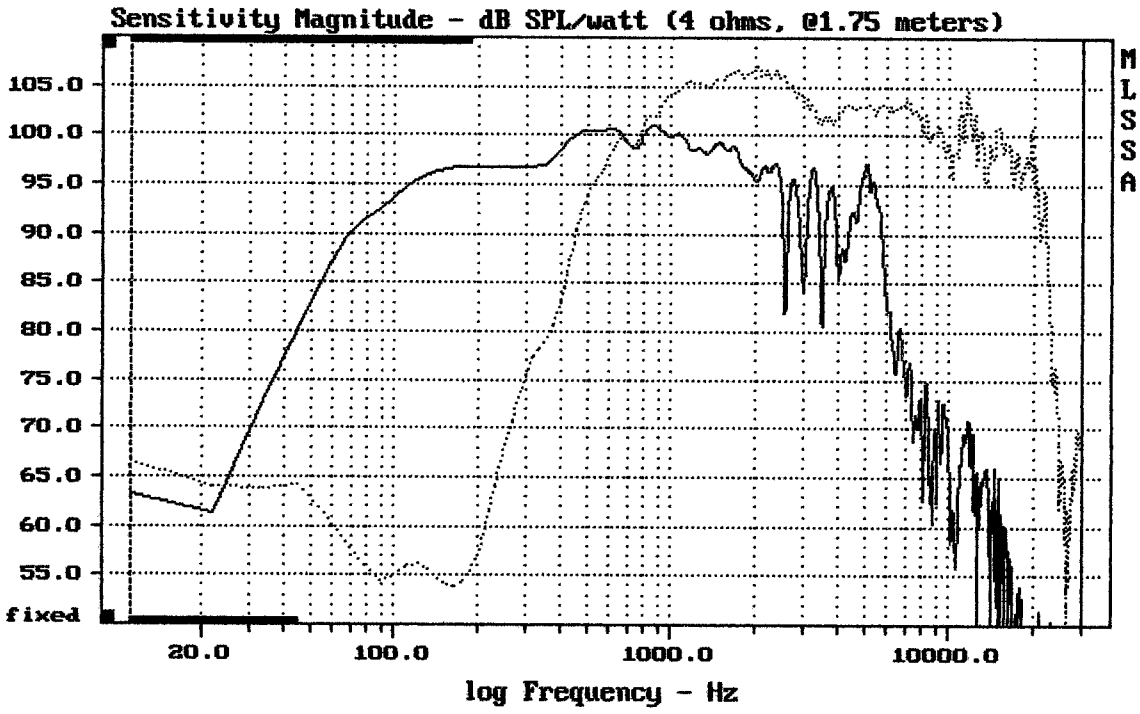
<http://eshop.prodance.cz/d3300ti-16-ohm/d-97479/>

- EMINENCE HE2A

<http://eshop.prodance.cz/he2a/d-96285/>

Schéma výhybky:

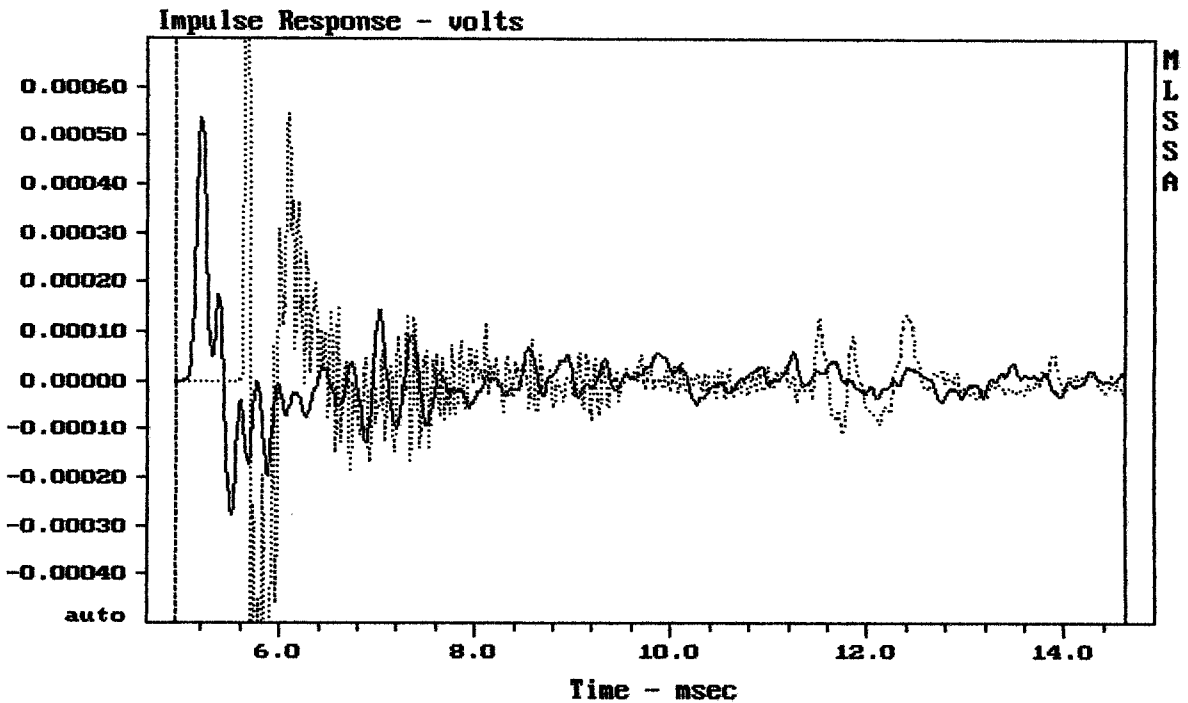




CURSOR: dy = 24.5712 x = 30007.1014 (2704)

2xCIARE + D3300TI/16 + HE 2A

MLSSA: Frequency Domain

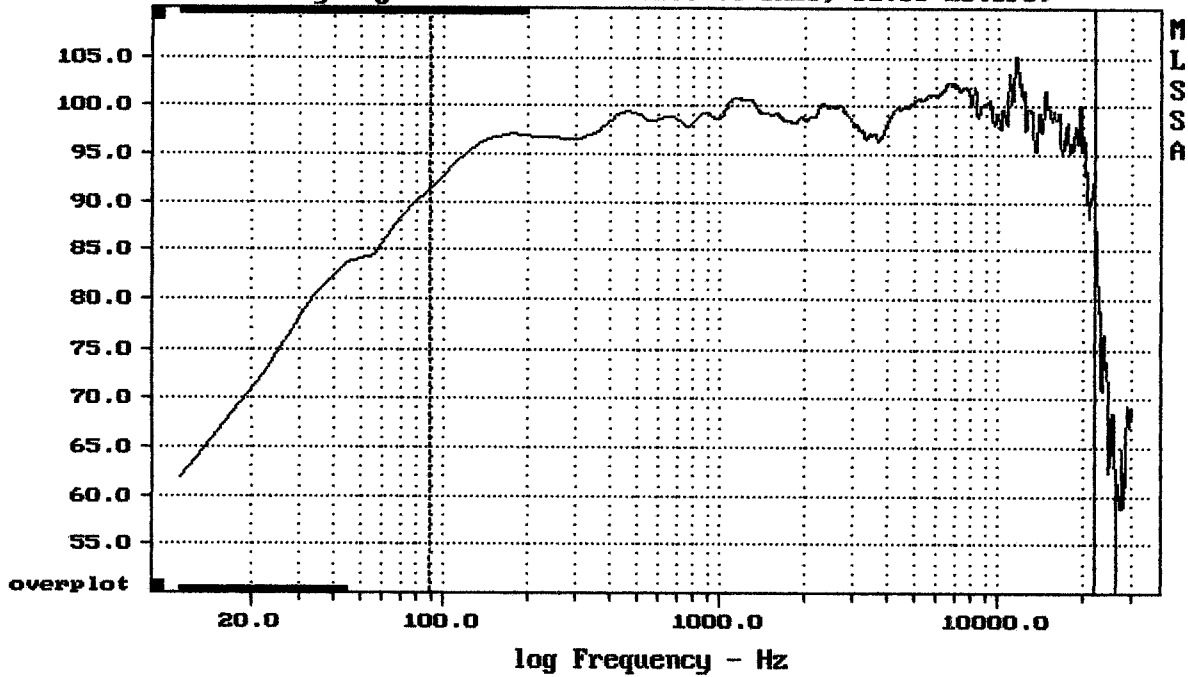


mean: 1.029e-007, rms: 0.0002272, std: 0.0002272, max: 0.003256, min: -0.001786

2xCIARE + D3300TI/16 + HE 2A

MLSSA: Time Domain

Sensitivity Magnitude - dB SPL/watt (4 ohms, @1.85 meters)

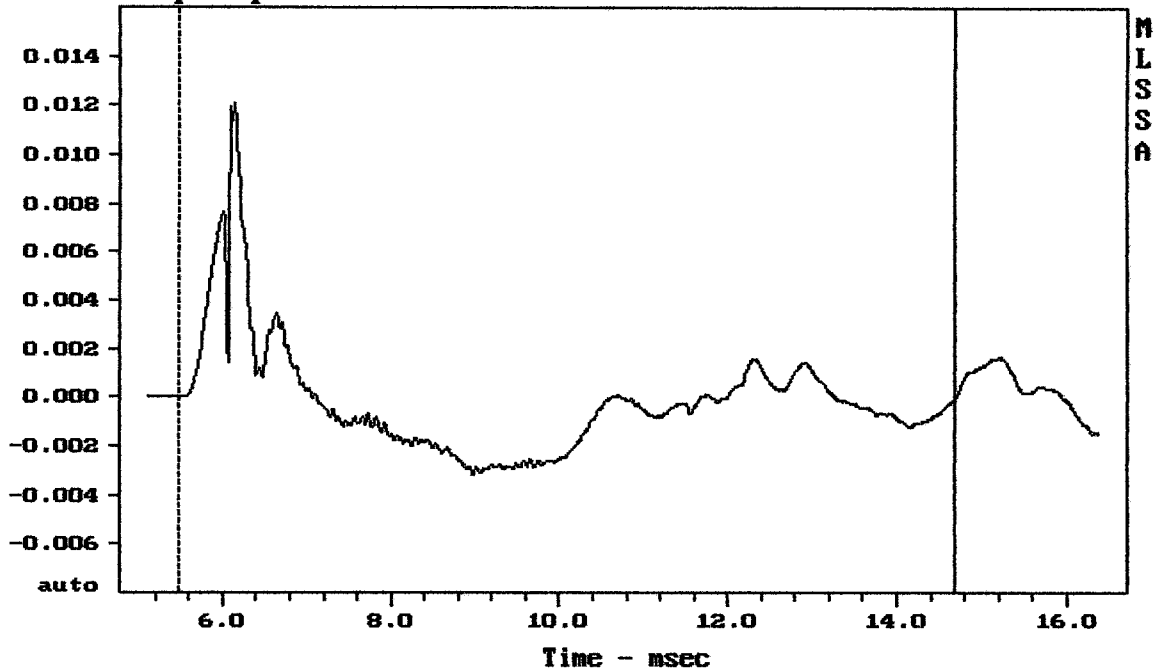


Level (89:22106 Hz) = 98.83 dB SPL/watt (4 ohms, @1.85 meters)

2X CIARE + D3300TI/16 + HE2A

MLSSA: Frequency Domain

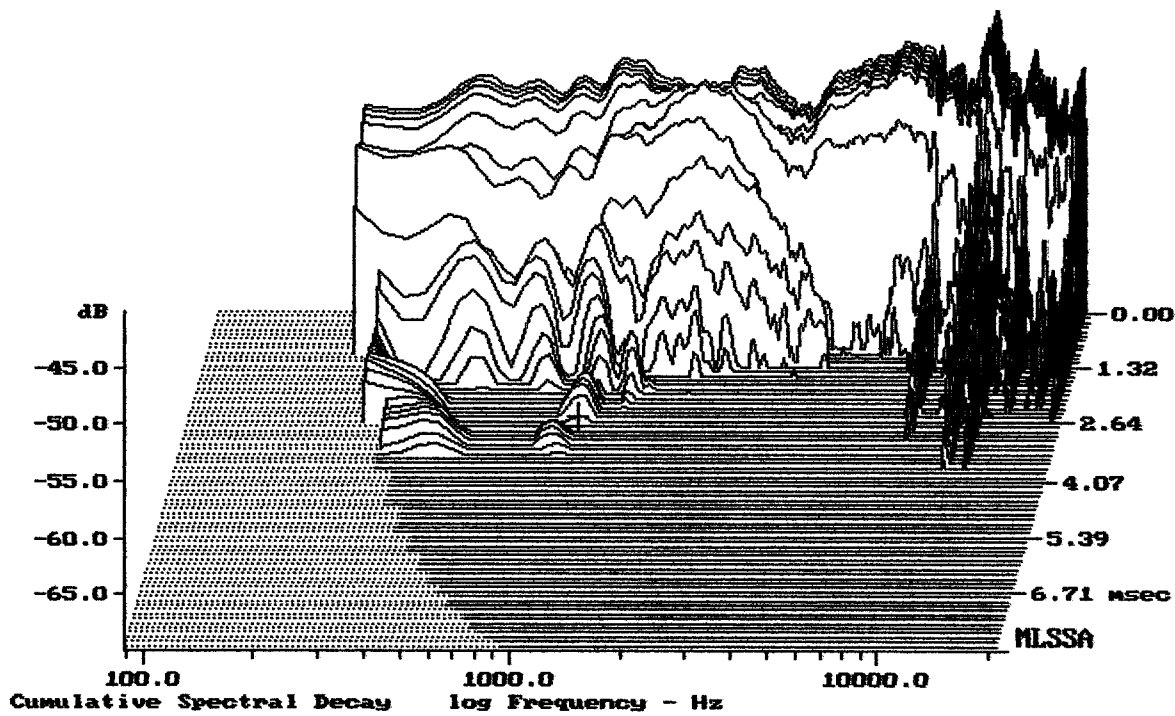
Step Response - volts



mean: -0.0001979, rms: 0.002305, std: 0.002297, max: 0.01212, min: -0.003183

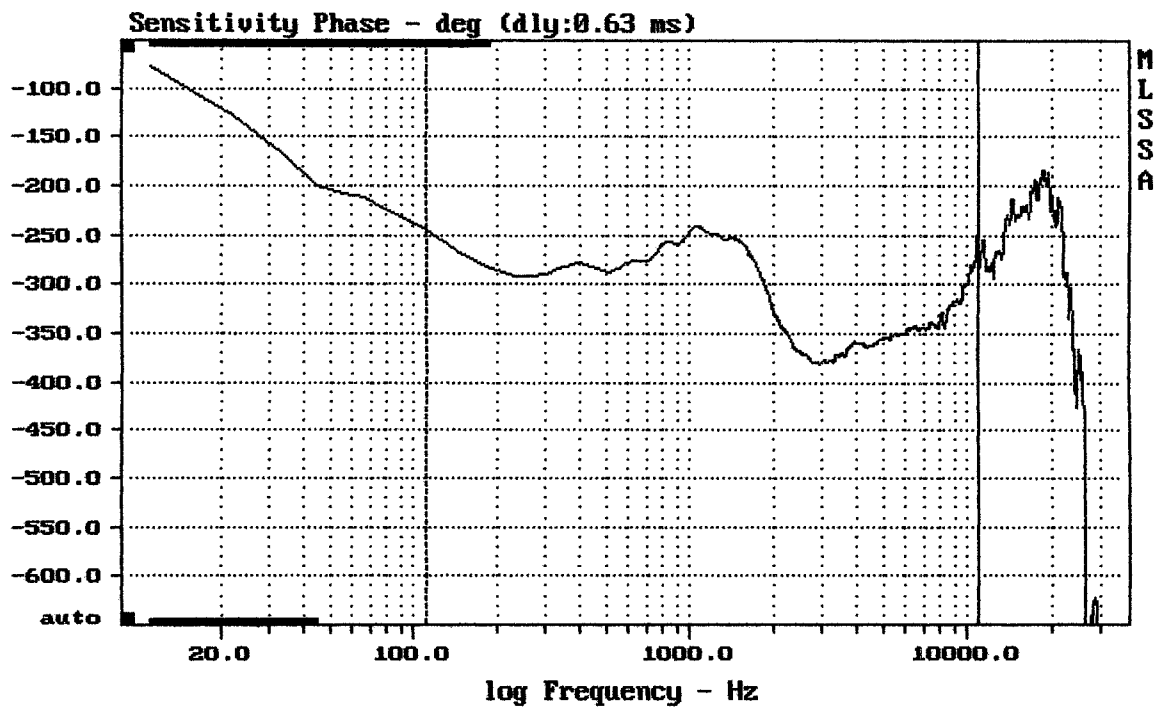
2X CIARE + D3300TI/16 + HE2A

MLSSA: Time Domain



-69.51 dB, 1021 Hz (23), 2.640 msec (25)

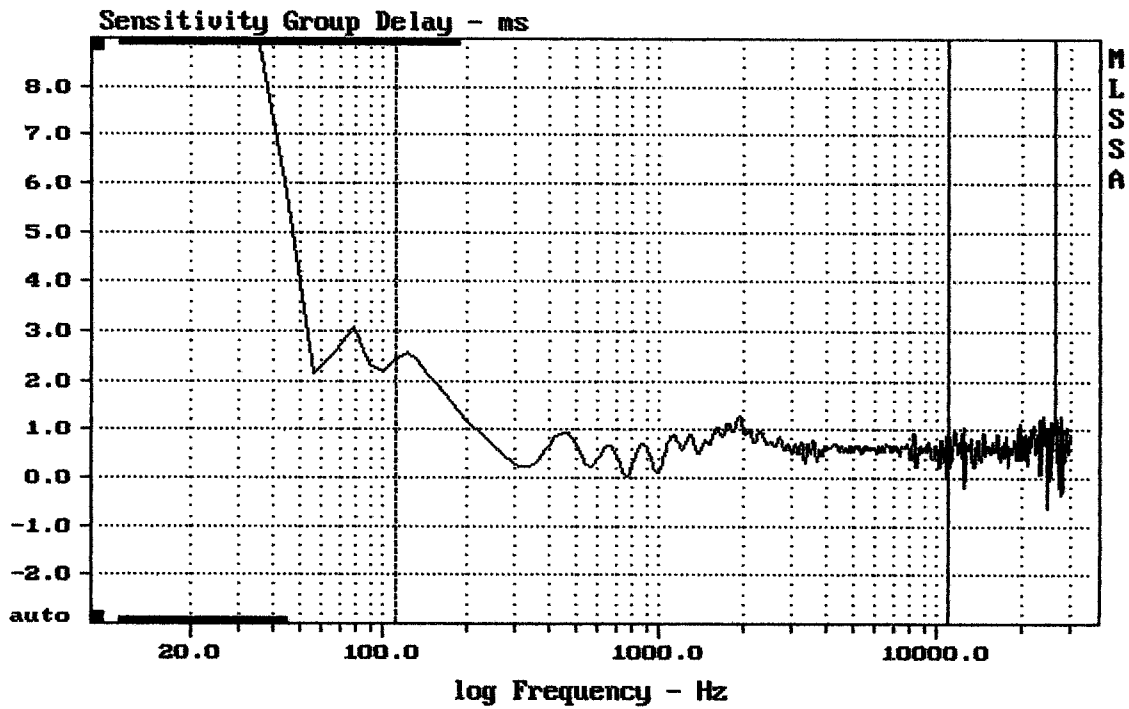
DT10



mean: -327, rms: 329.2, std: 37.73, max: -240.8, min: -388.4

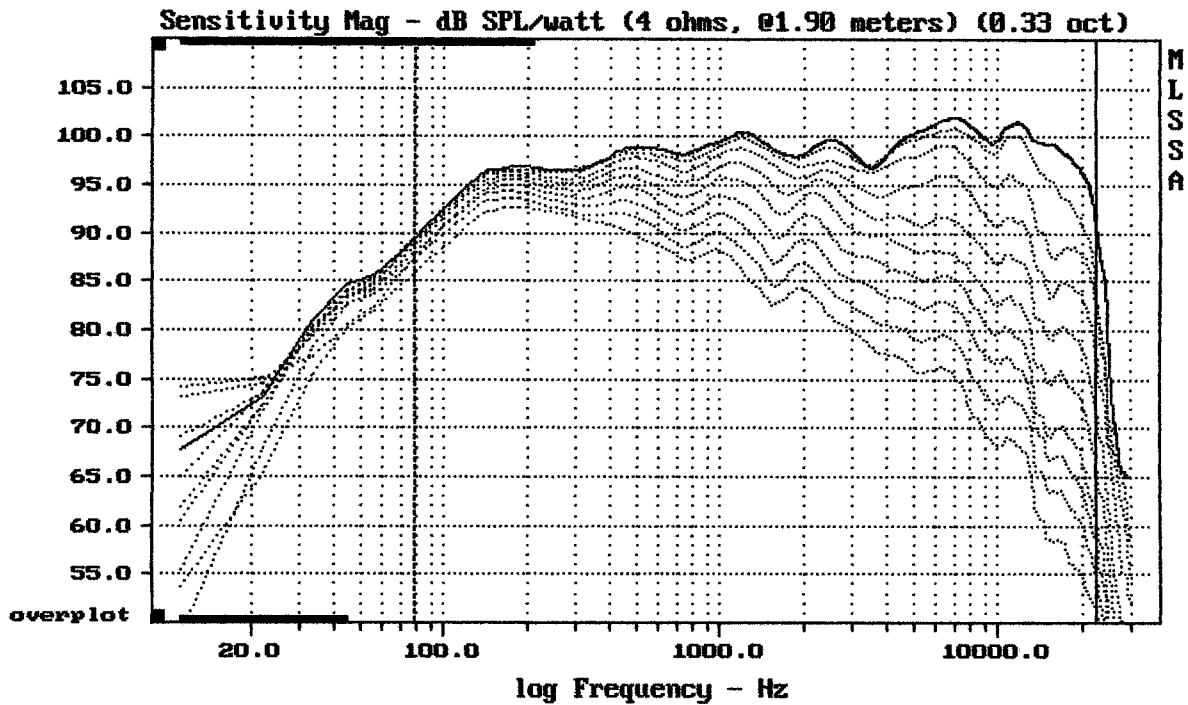
2X CIARE + D3300TI/16 + HEZA

MLSSA: Frequency Domain



ZX CIARE + D3300TI/16 + HE2A

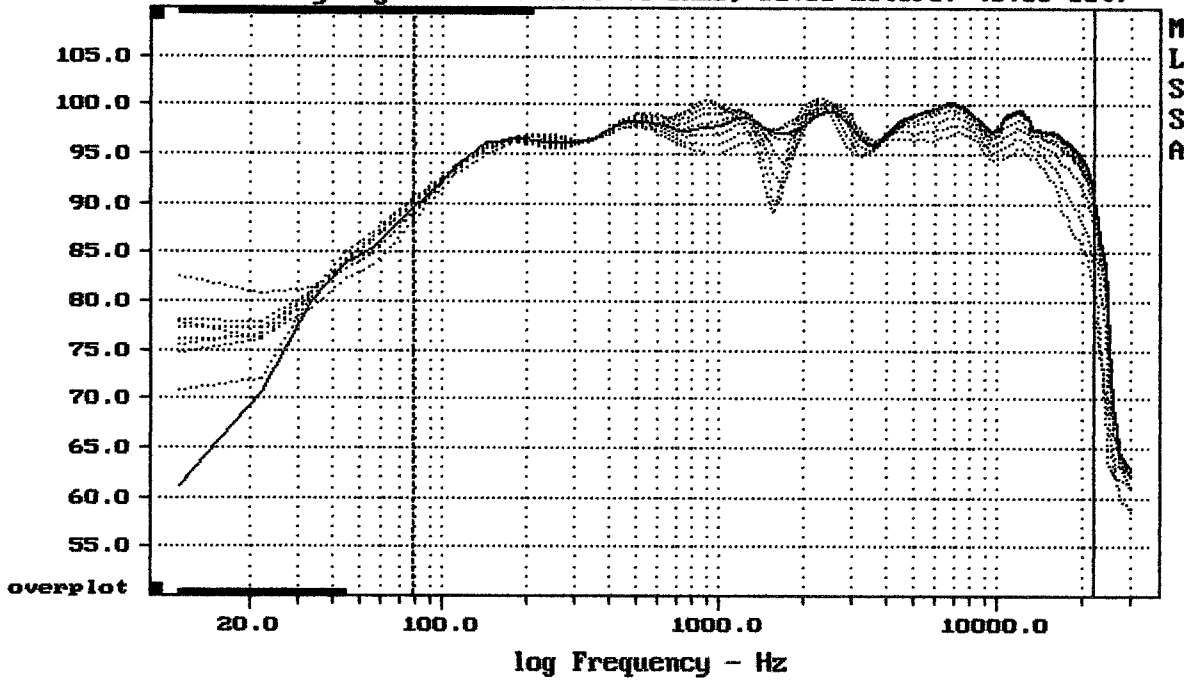
MLSSA: Frequency Domain



ZX CIARE + D3300TI/16 + HE2A

MLSSA: Frequency Domain

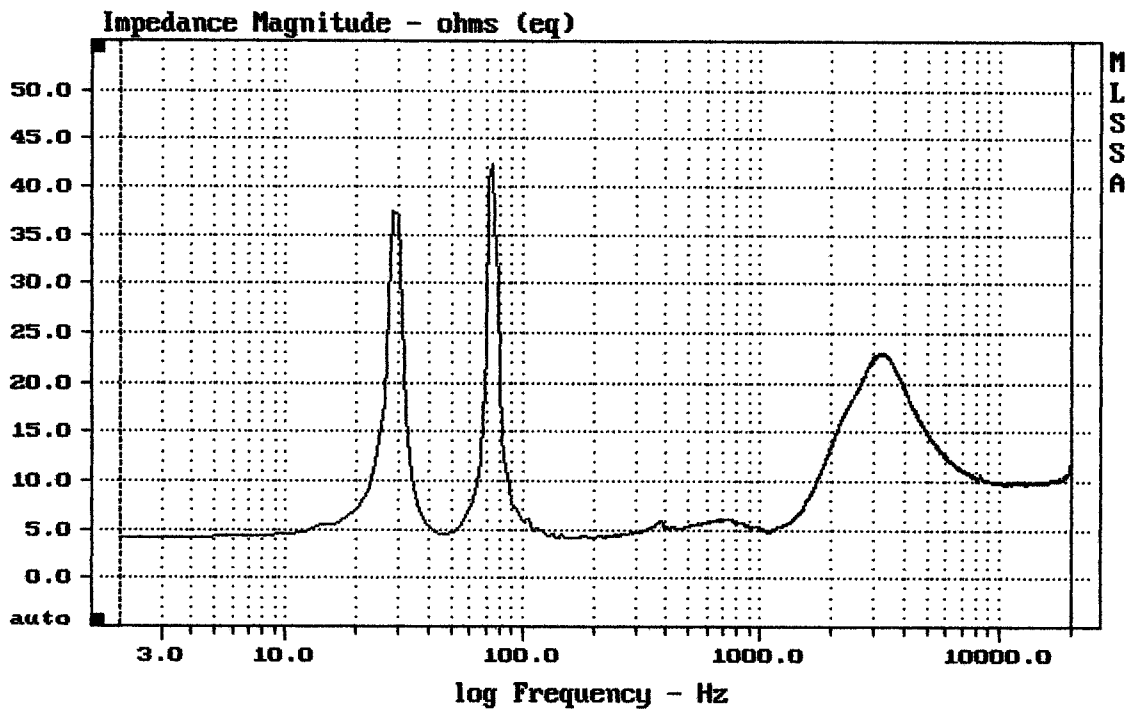
Sensitivity Mag - dB SPL/watt (4 ohms, @1.85 meters) (0.33 oct)



CURSOR: y = 79.2048 x = 22205.6989 (2001)

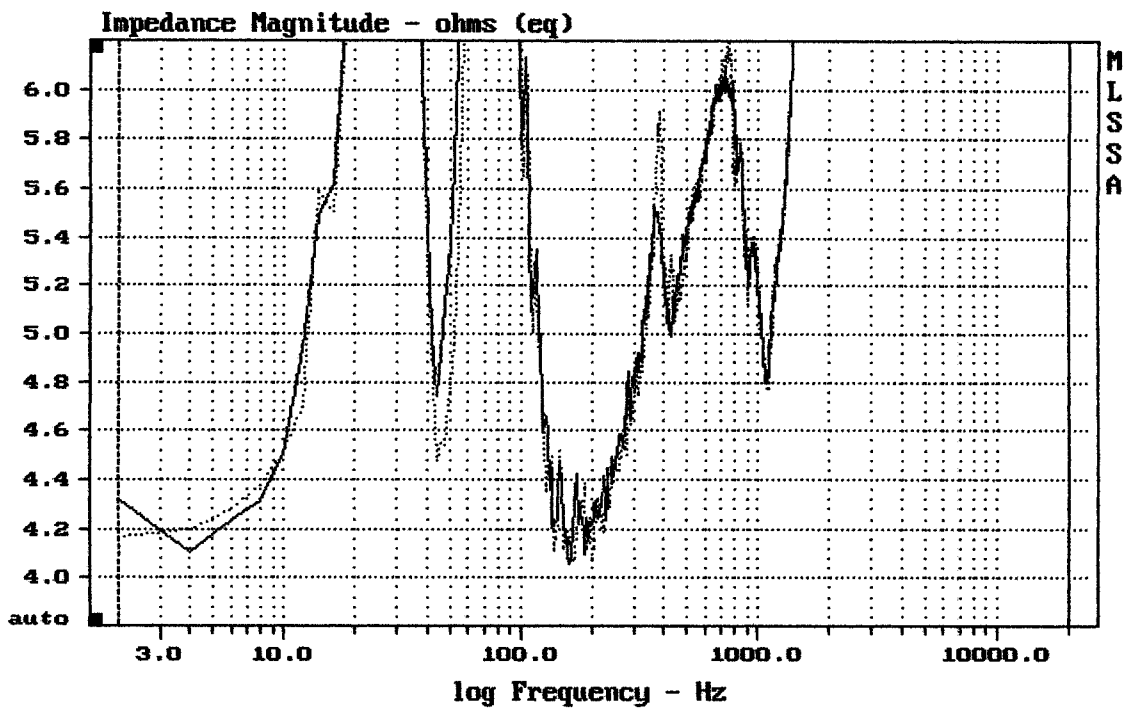
2xCIARE + D3300TI/16 + HE2A

MLSSA: Frequency Domain



ZX CIARE + D3300TI/16 + HEZA

MLSSA: Frequency Domain



ZX CIARE + D3300TI/16 + HEZA

— plná čára je vliv tlumení

MLSSA: Frequency Domain