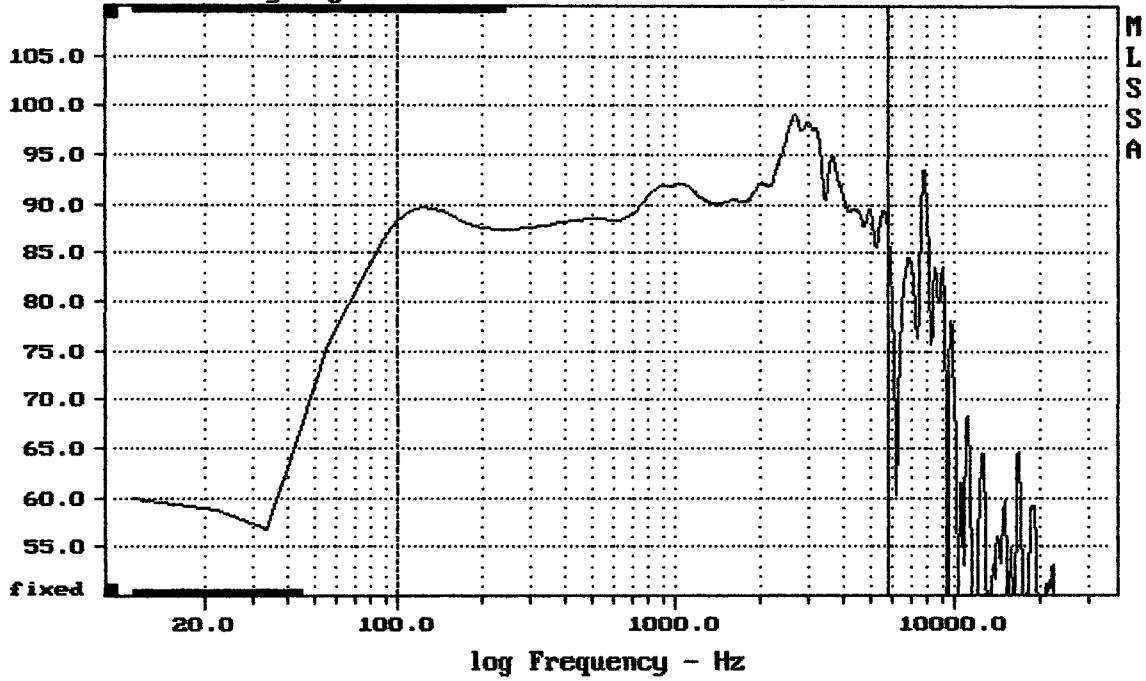


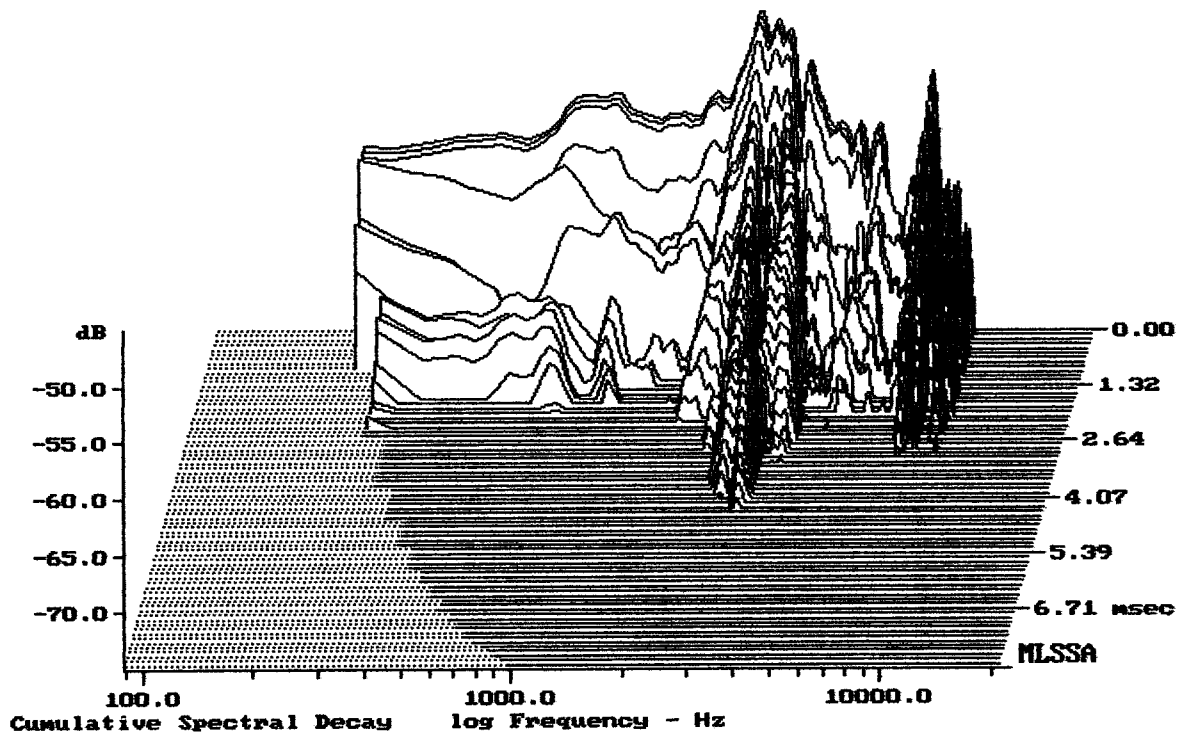
Sensitivity Magnitude - dB SPL/watt (8 ohms, @1.00 meters)



Level (100:5004 Hz) = 91.34 dB SPL/watt (8 ohms, @1.00 meters)

10CV5

MLSSA: Frequency Domain



-75.00 dB, 2930 Hz (66), 4.070 msec (38)

DTTO

Measured Data

QC Limits

Line	Parameter	Value	Units
1	RMSE-free	0.16	Ohms
2	Fs	100.65	Hz
3	Re	6.89	Ohms[dc]
4	Res	37.30	Ohms
5	Qms	18.45	
6	Qes	3.41	
7	Qts	2.88	
8	L1	0.52	mH
9	L2	0.61	mH
10	R2	2.52	Ohms
11	RMSE-load	0.29	Ohms
12	Vas(Sd)	17.93	liters
13	Mms	23.50	grams
14	Cms	106	$\mu\text{M}/\text{Newton}$
15	B1	5.48	Tesla-M
16	SPLref(Sd)	89.1	dB[Re]
17	Rub-index	0.01	

Method: Mass-loaded (30.00 grams)

Area (Sd): 346.36 sq cm

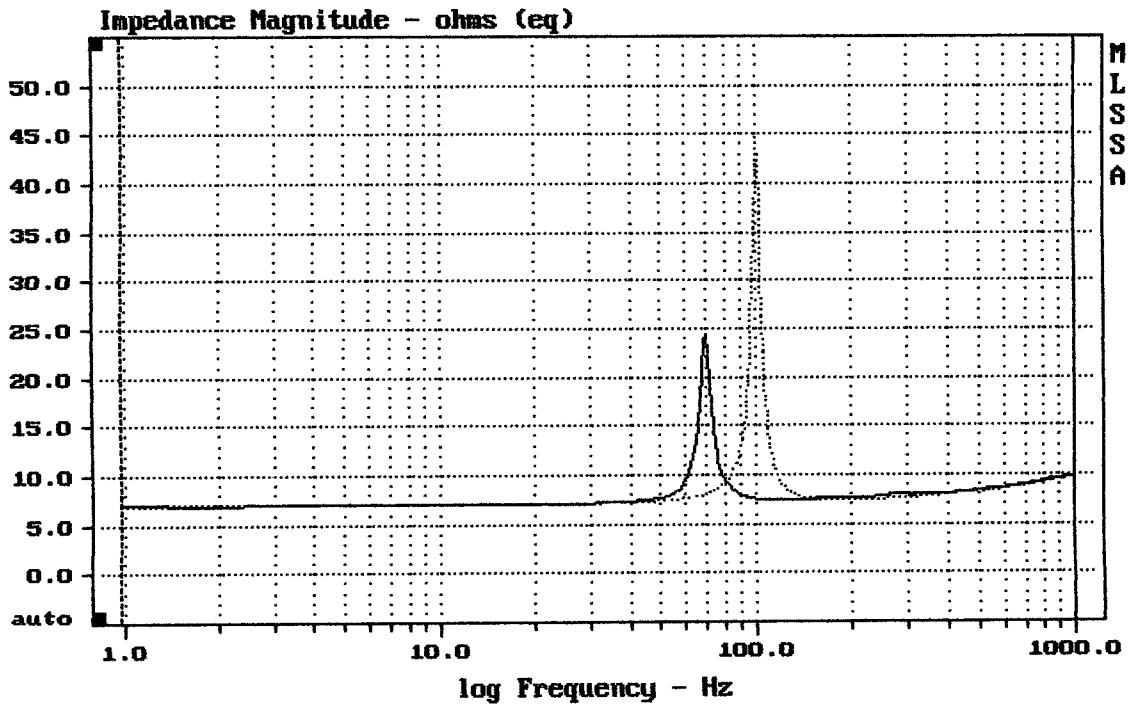
DCR mode: Measure (-0.11 ohms)

QC file: CLOSED

Analysis successful. Shift in Fs = -31.5% (-20% to -50% is recommended).

10CV5

MLSSA: Parameters



mean: 8.836, rms: 9.285, std: 2.852, max: 44.65, min: 6.939

DTTO

MLSSA: Frequency Domain