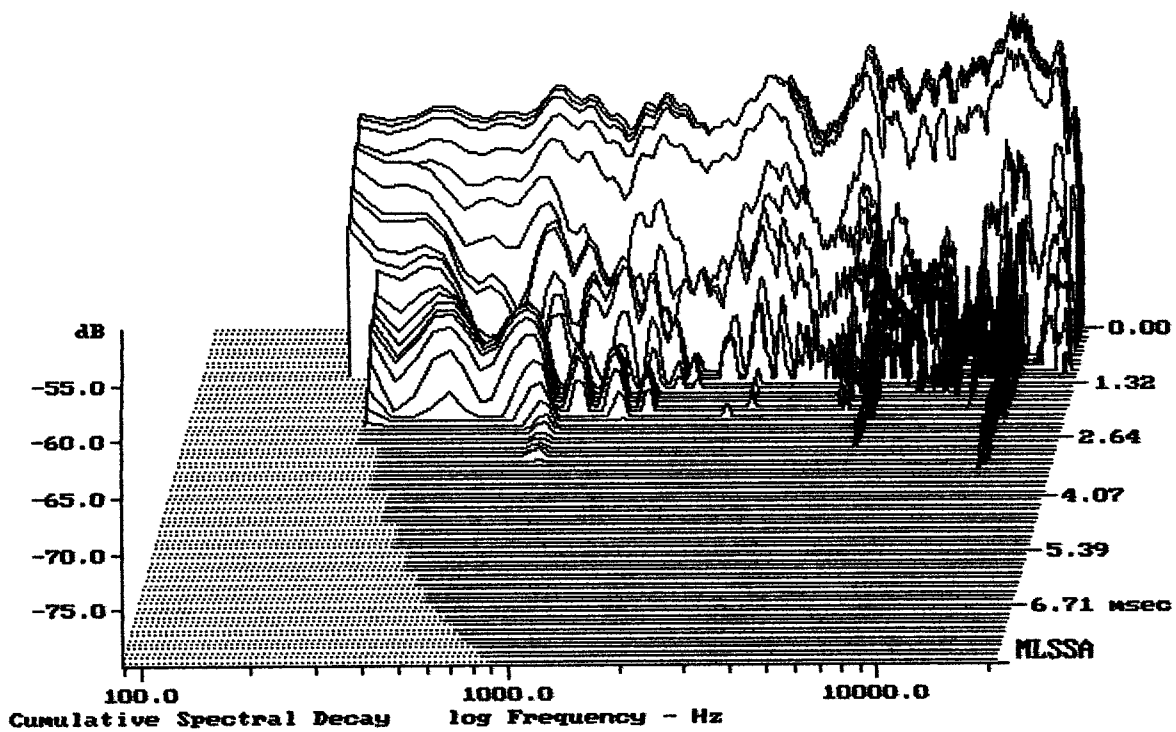


Level (89:19589 Hz) = 91.17 dB SPL/watt (8 ohms, @1.60 meters)

AD SBT

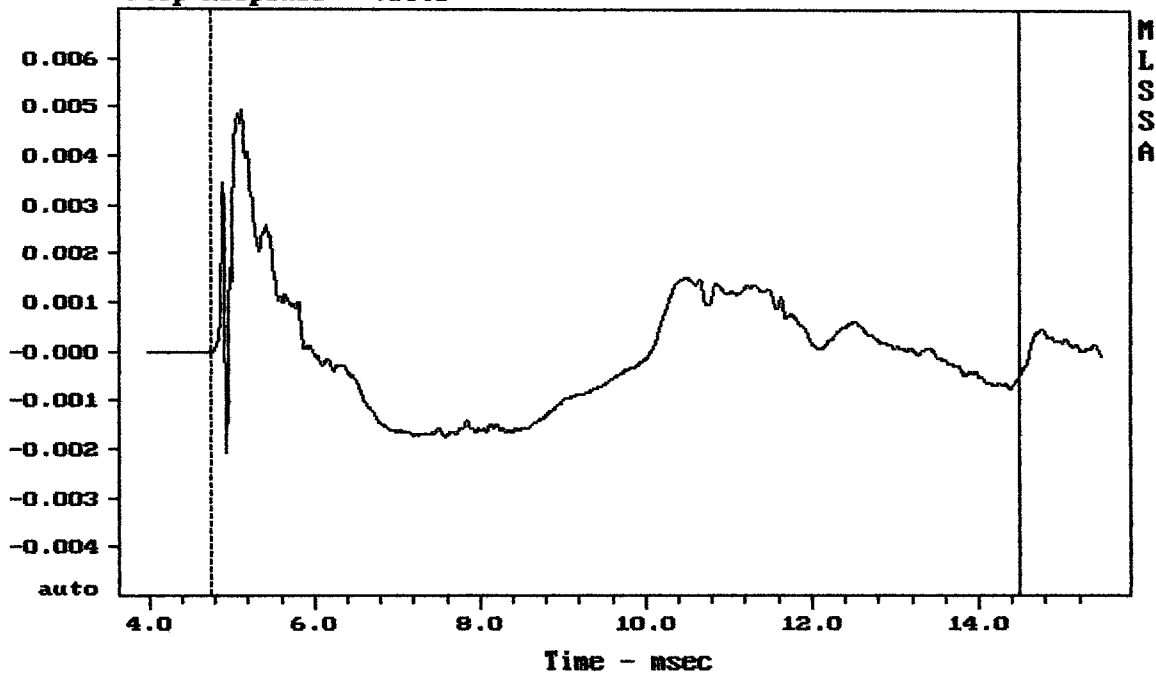
MLSSA: Frequency Domain



-78.80 dB, 5993 Hz (135), 2.860 msec (27)

DTTO

Step Response - volts

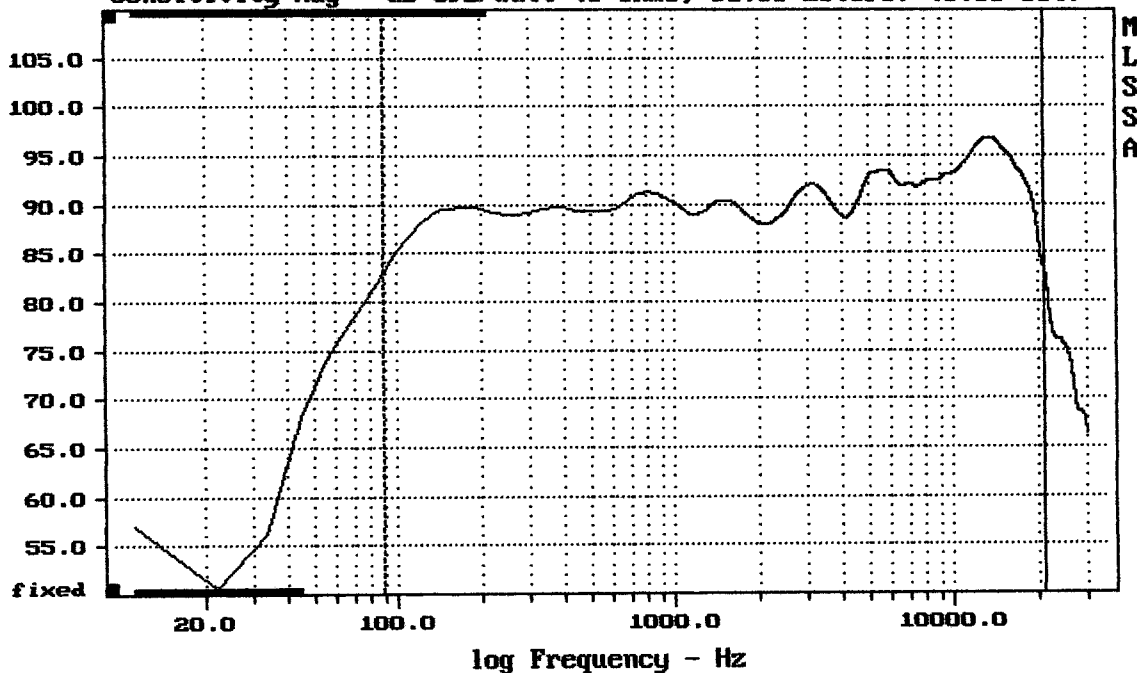


mean: $-5.252e-005$, rms: 0.001265, std: 0.001264, max: 0.004928, min: -0.002063

AD SBT

MLSSA: Time Domain

Sensitivity Mag - dB SPL/watt (8 ohms, @1.60 meters) (0.33 oct)

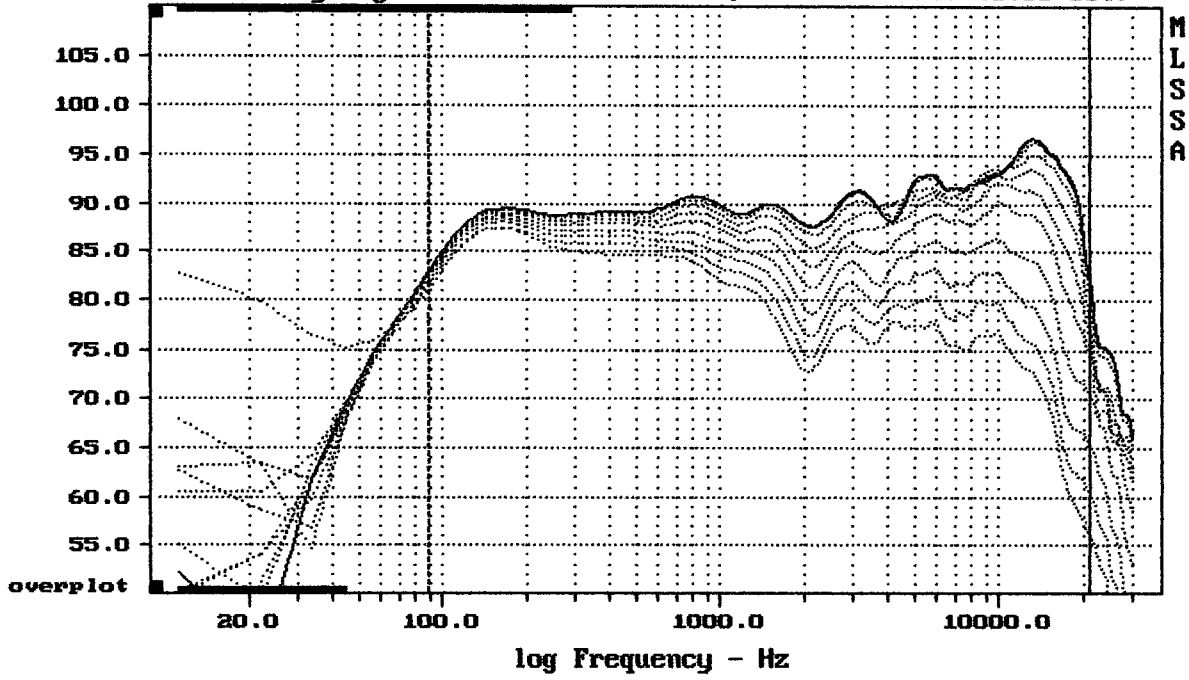


mean: 92.85, rms: 93.25, std: 2.32, max: 96.84, min: 82.96

AD SBT

MLSSA: Frequency Domain

Sensitivity Mag - dB SPL/watt (8 ohms, @1.60 meters) (0.33 oct)

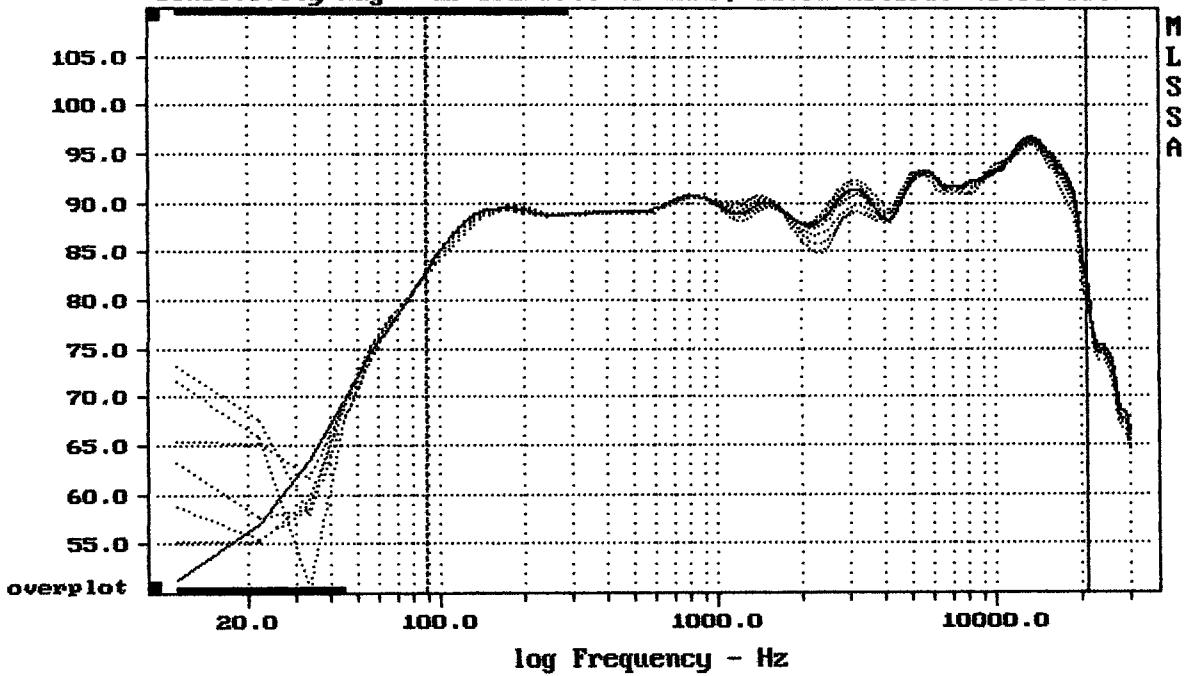


Overlay Compare: dev= +19/-12, std= 7.6, avg= -20

AD SBT

MLSSA: Frequency Domain

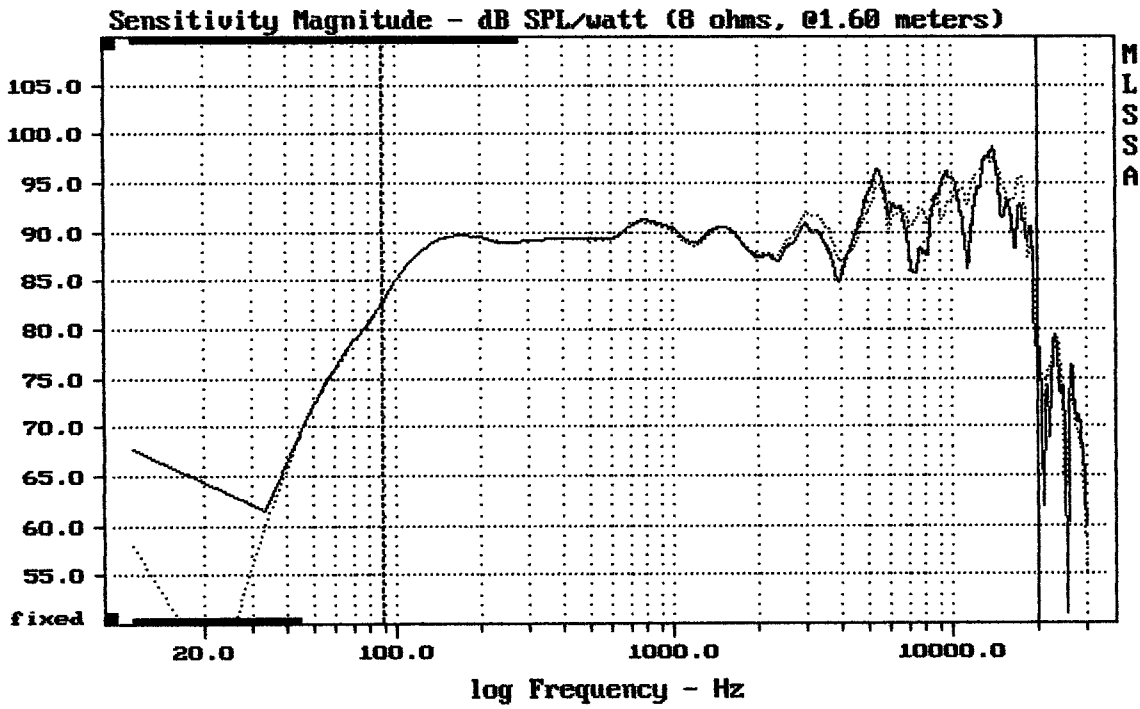
Sensitivity Mag - dB SPL/watt (8 ohms, @1.60 meters) (0.33 oct)



mean: 91.84, rms: 92.32, std: 2.56, max: 96.02, min: 79.84

AD SBT

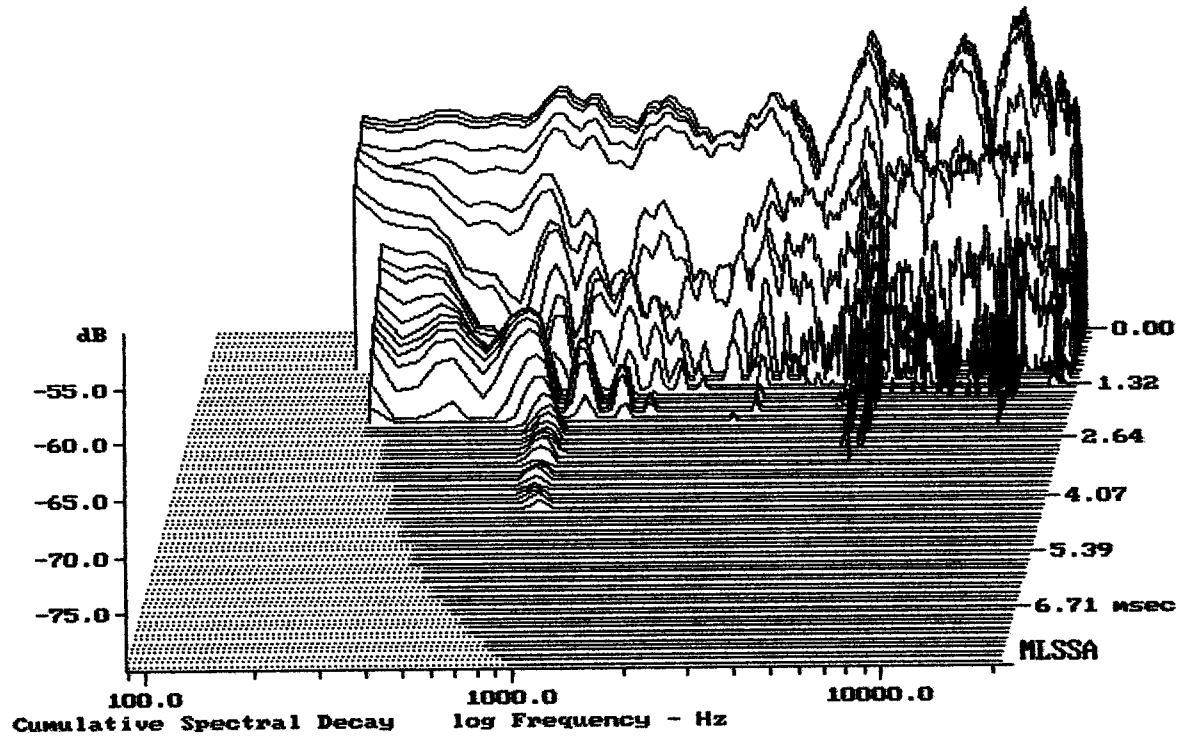
MLSSA: Frequency Domain



Overlay Compare: dev= +5.1/-5.5, std= 2.2, avg= -1

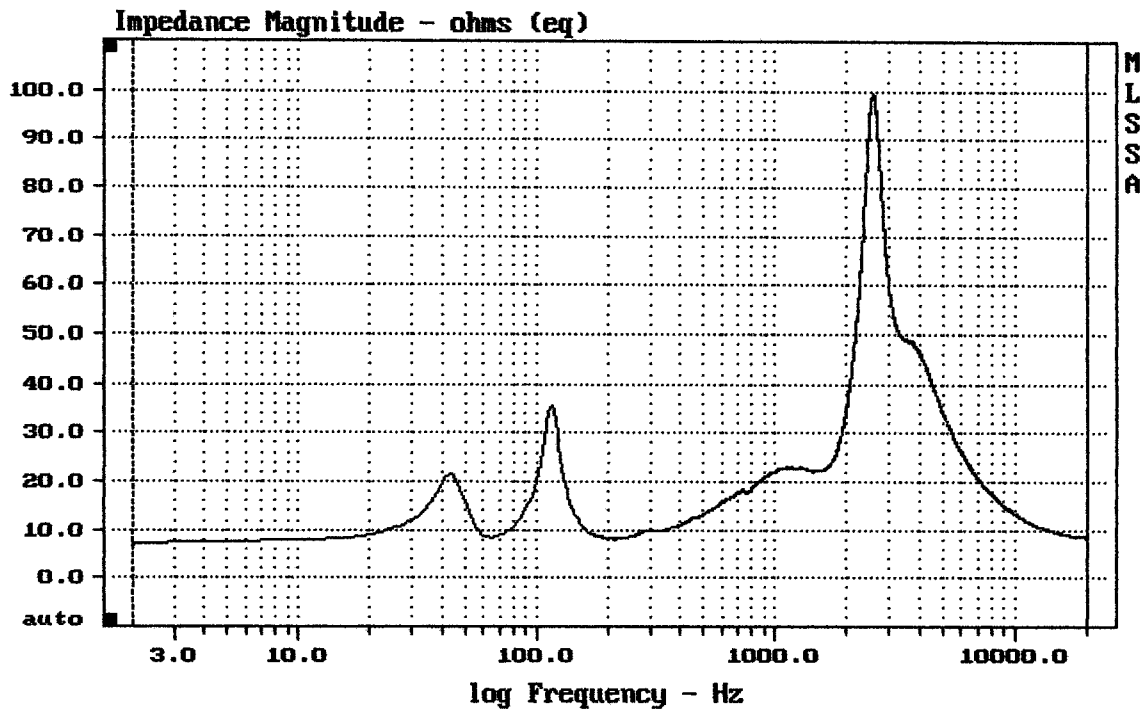
AD SBT

MLSSA: Frequency Domain



-88.00 dB, 5637 Hz (127), 2.860 msec (27)

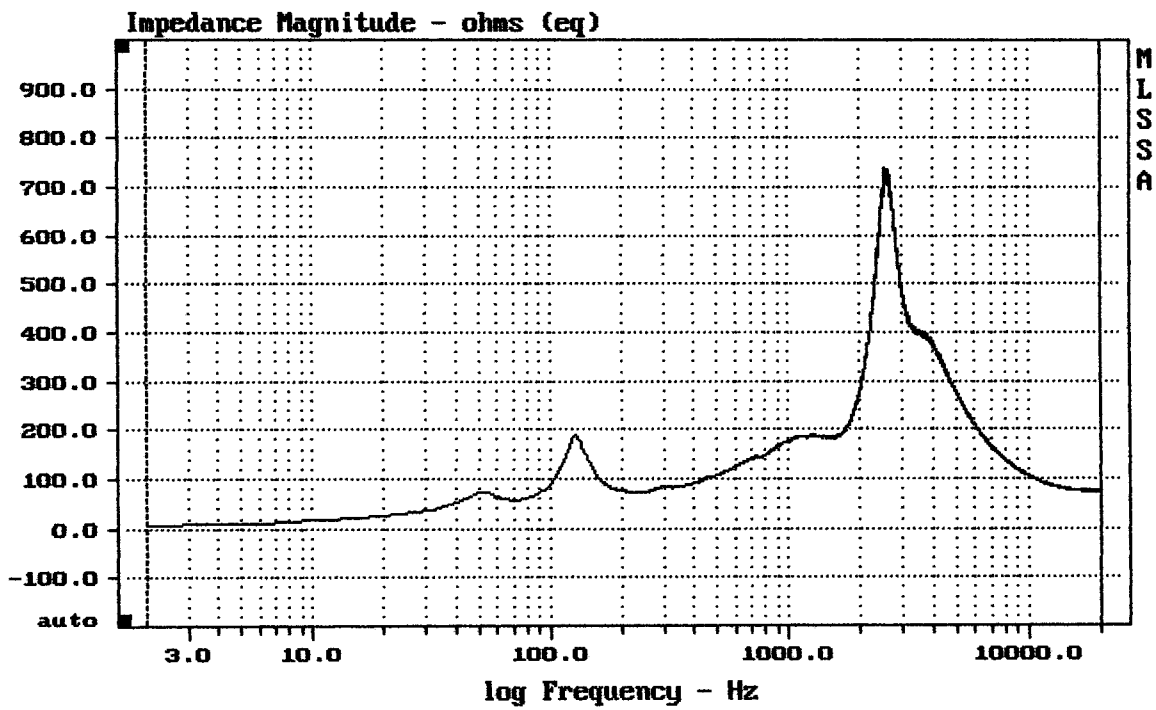
DTTO



mean: 20.18, rms: 26.3, std: 16.87, max: 99.33, min: 6.988

AD SBT

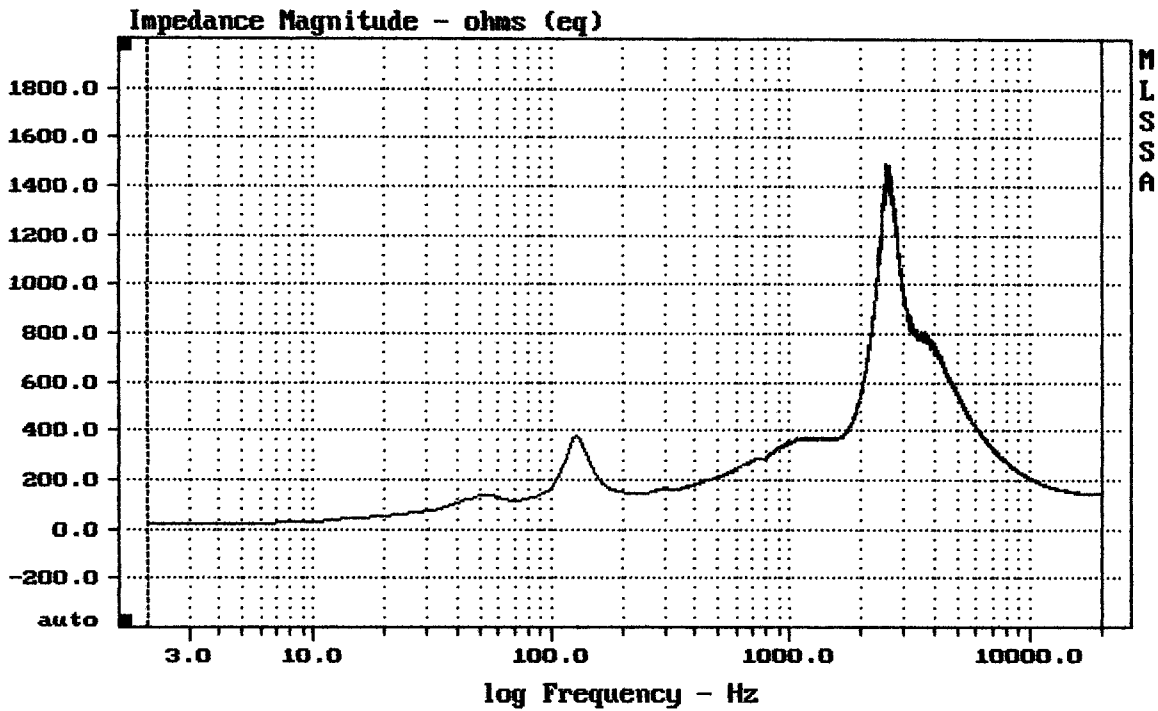
MLSSA: Frequency Domain



mean: 161.4, rms: 207.1, std: 129.8, max: 737.2, min: 6.884

AD SBT

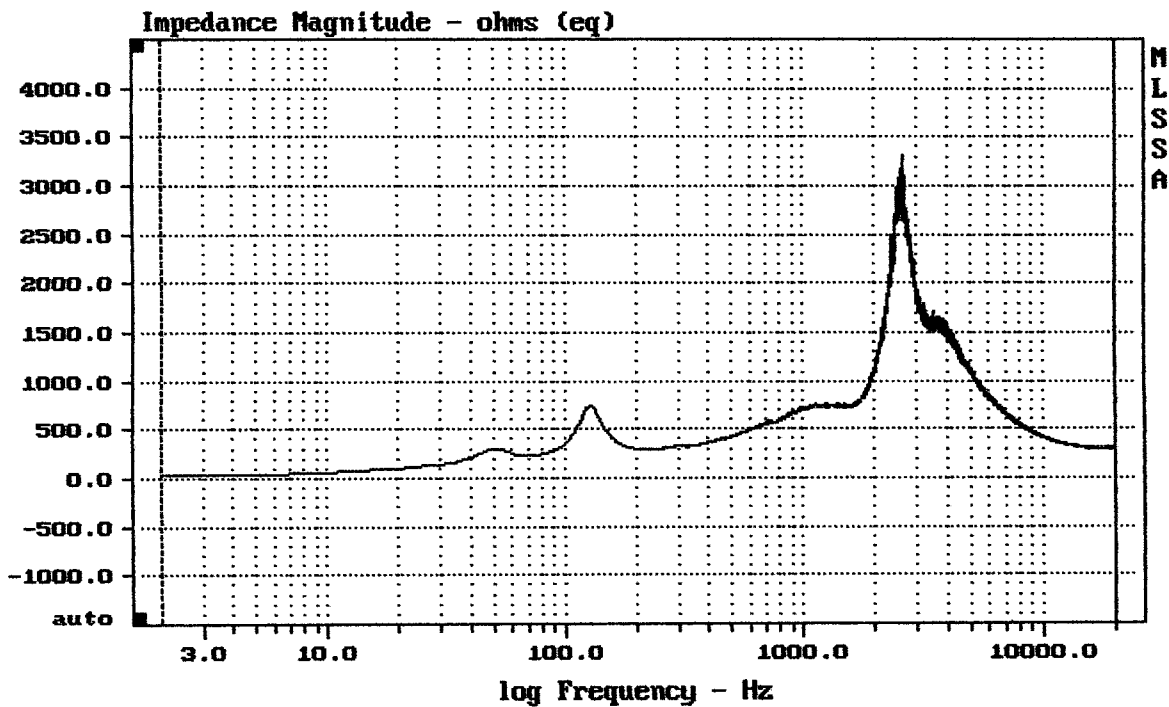
MLSSA: Frequency Domain



mean: 318.7, rms: 409.6, std: 257.3, max: 1495, min: 17.38

AD SBT

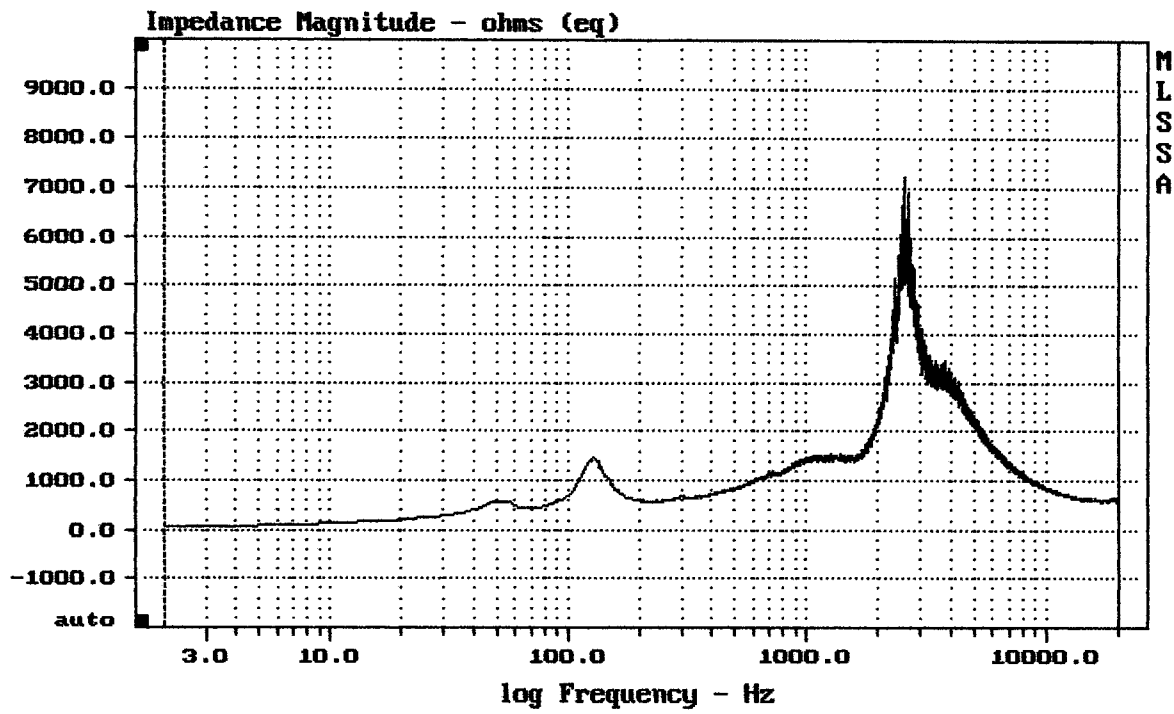
MLSSA: Frequency Domain



mean: 641, rms: 824.1, std: 517.9, max: 3320, min: 37.34

AD SBT

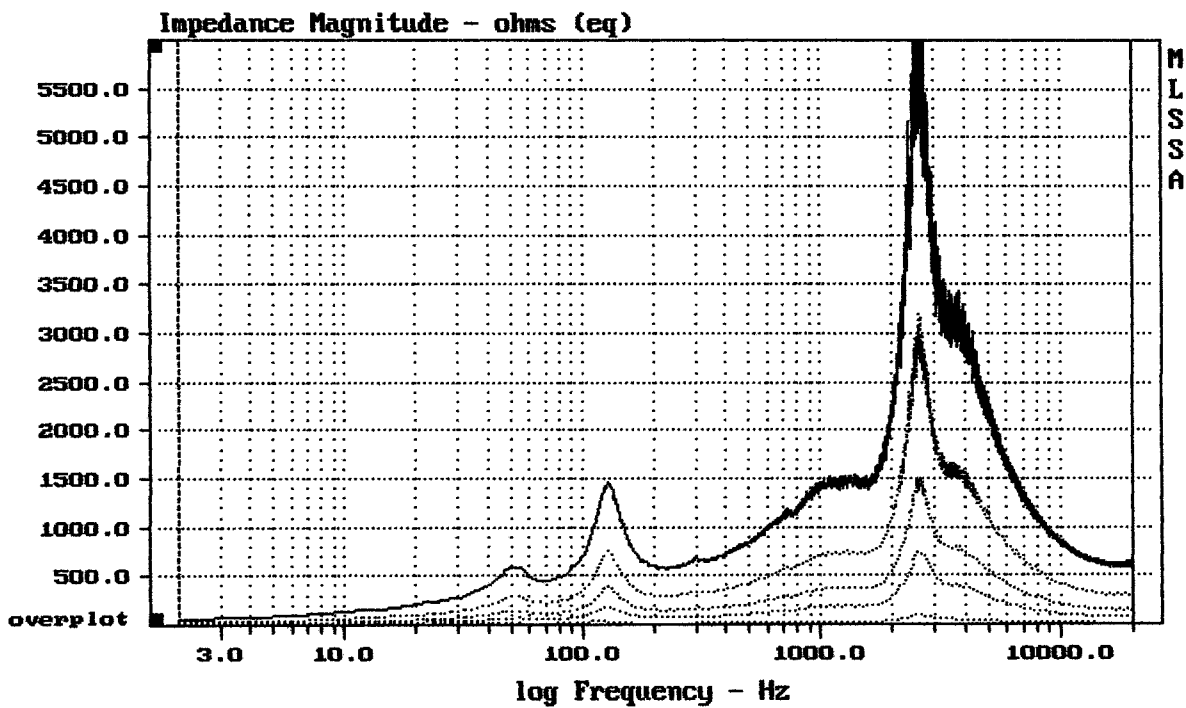
MLSSA: Frequency Domain



mean: 1283, rms: 1638, std: 1819, max: 7243, min: 63.39

AD SBT

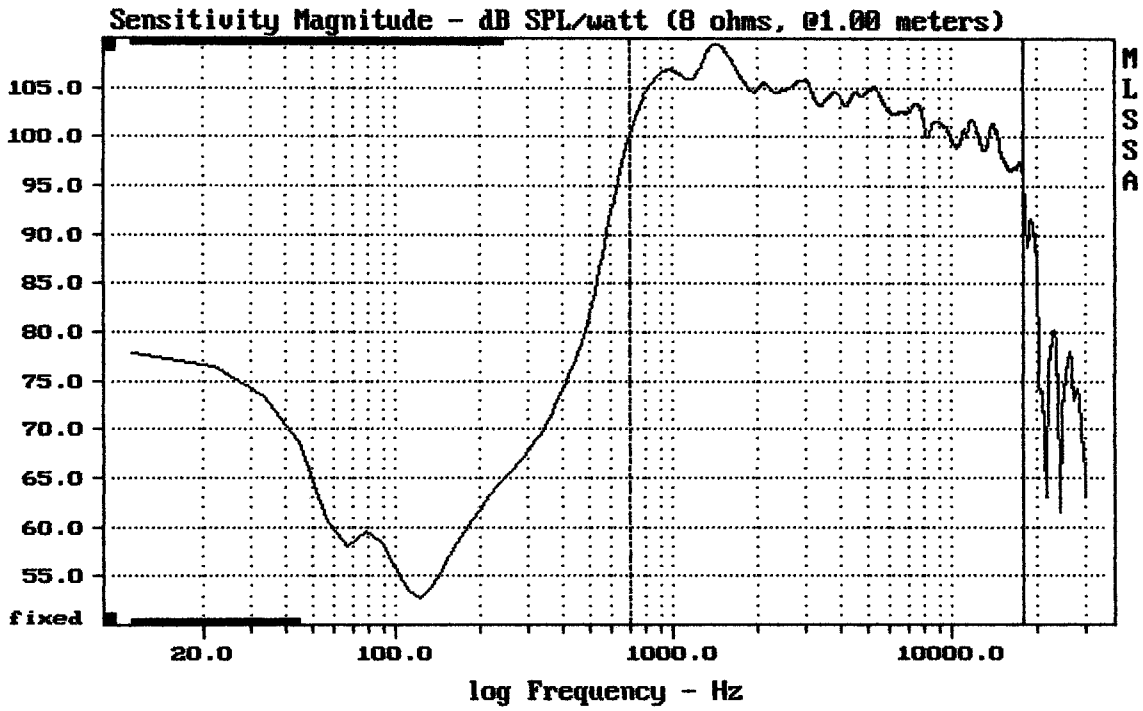
MLSSA: Frequency Domain



CURSOR: y = 8.4747 x = 20001.5203 (9995)

AD SBT

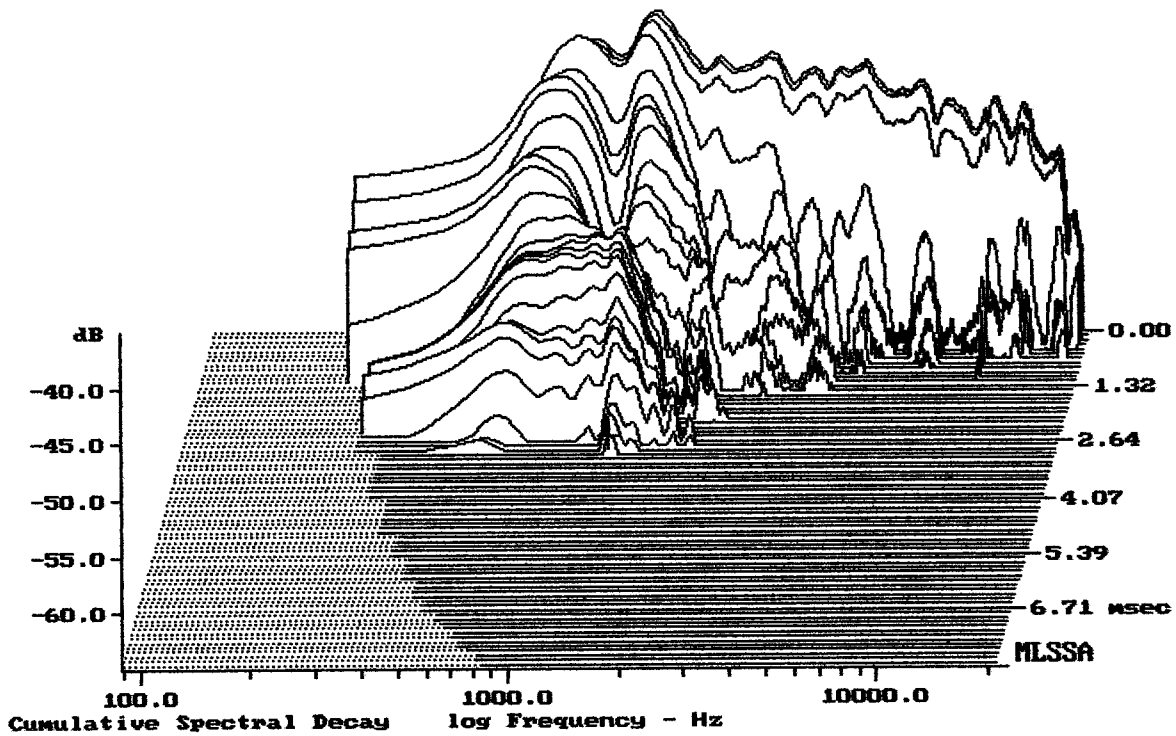
MLSSA: Frequency Domain



Level (699:17911 Hz) = 104.60 dB SPL/watt (8 ohms, @1.00 meters)

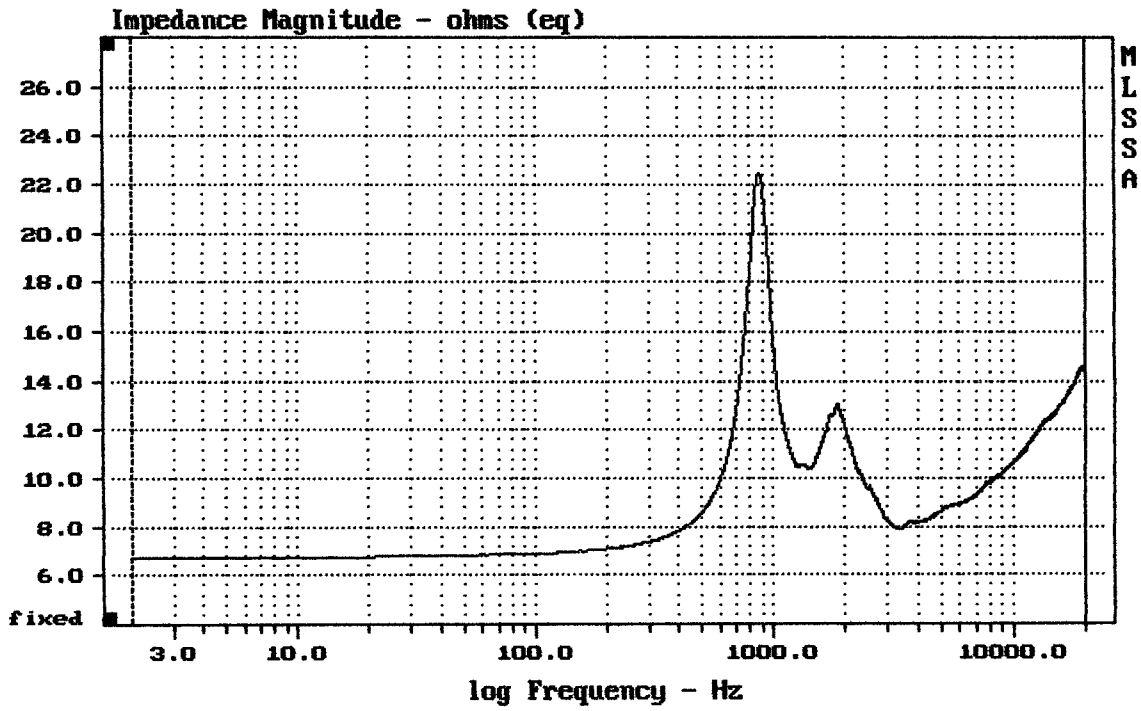
AD S8T + A7570

MLSSA: Frequency Domain



-63.36 dB, 1287 Hz (29), 2.970 msec (28)

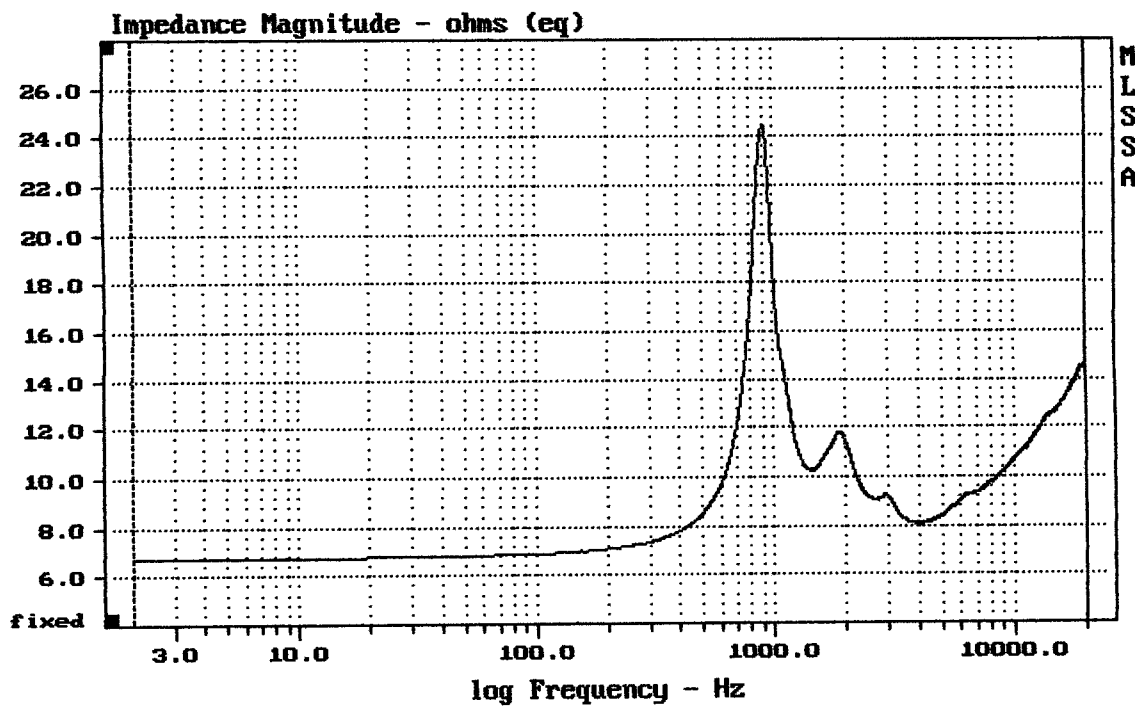
DTTO



mean: 11.24, rms: 11.46, std: 2.257, max: 22.46, min: 6.711

DTTO + HORN

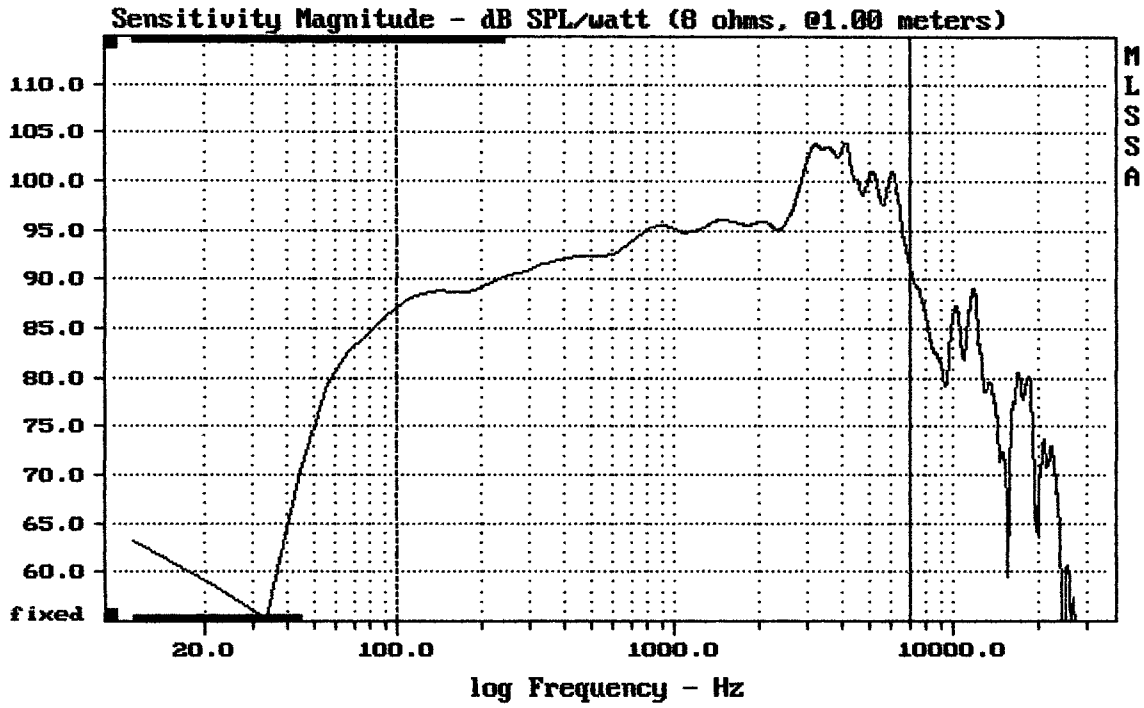
MLSSA: Frequency Domain



mean: 11.25, rms: 11.48, std: 2.32, max: 24.47, min: 6.741

AD SBT DRIVER

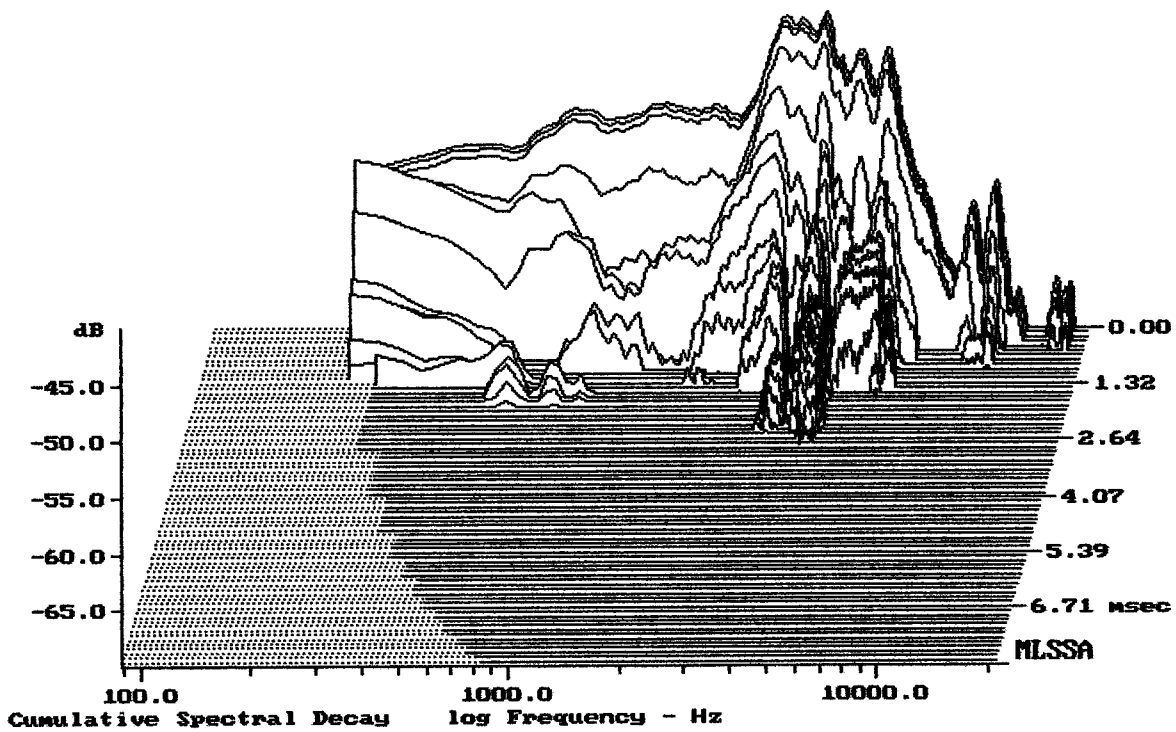
MLSSA: Frequency Domain



Level (100:7002 Hz) = 96.67 dB SPL/watt (8 ohms, @1.00 meters)

AD SB2T

MLSSA: Frequency Domain



-69.30 dB, 4128 Hz (93), 2.640 msec (25)

DTTO

MLSSA SPO 4.0D #960903-3057-3075

Measured Data

QC Limits

Line	Parameter	Value	Units
1	RMSE-free	0.80	Ohms
2	Fs	85.87	Hz
3	Re	5.53	Ohms[dc]
4	Res	30.08	Ohms
5	Qms	2.67	
6	Qes	0.49	
7	Qts	0.41	
8	L1	0.16	mH
9	L2	1.28	mH
10	R2	2.75	Ohms
11	RMSE-load	0.15	Ohms
12	Vas(Sd)	13.70	liters
13	Mms	18.15	grams
14	Cms	189	μ M/Newton
15	B1	10.51	Tesla-M
16	SPLref(Sd)	94.3	dB[Re]
17	Rub-index	0.01	

Method: Mass-loaded (40.00 grams)

Area (Sd): 226.98 sq cm

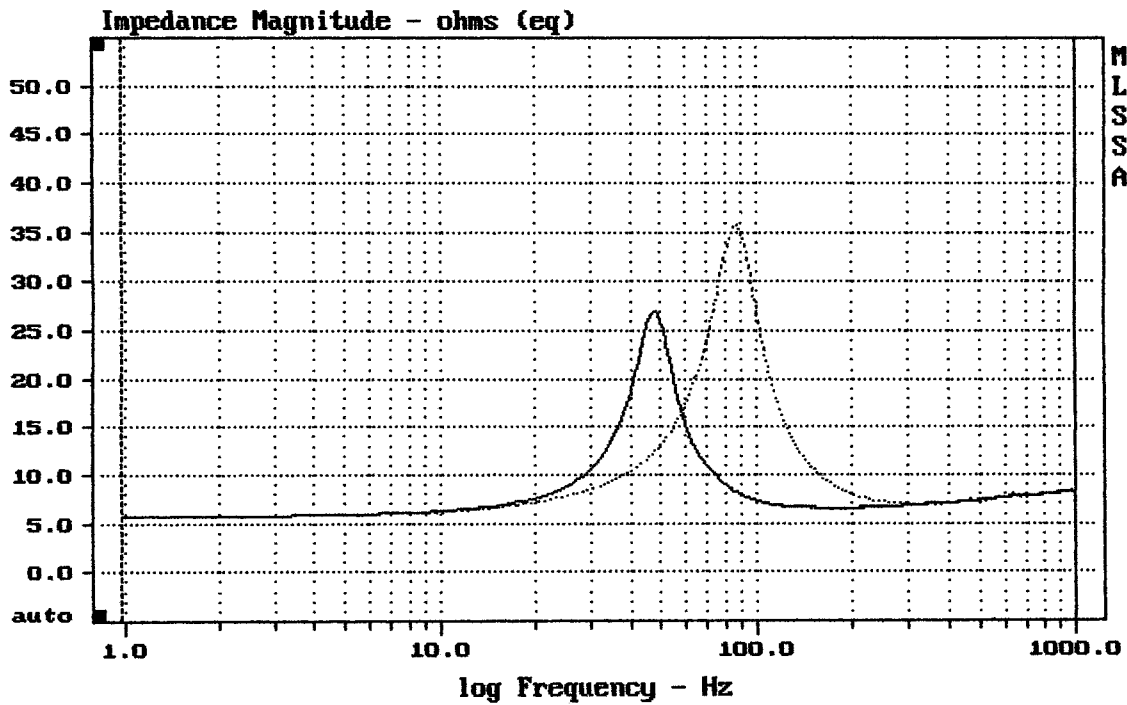
DCR mode: Measure (-0.16 ohms)

QC file: CLOSED

Analysis successful. Shift in Fs = -44.9% (-20% to -50% is recommended).

QSC AD S8T

MLSSA: Parameters



mean: 9.075, rms: 10.26, std: 4.793, max: 35.63, min: 5.725

MLSSA: Frequency Domain