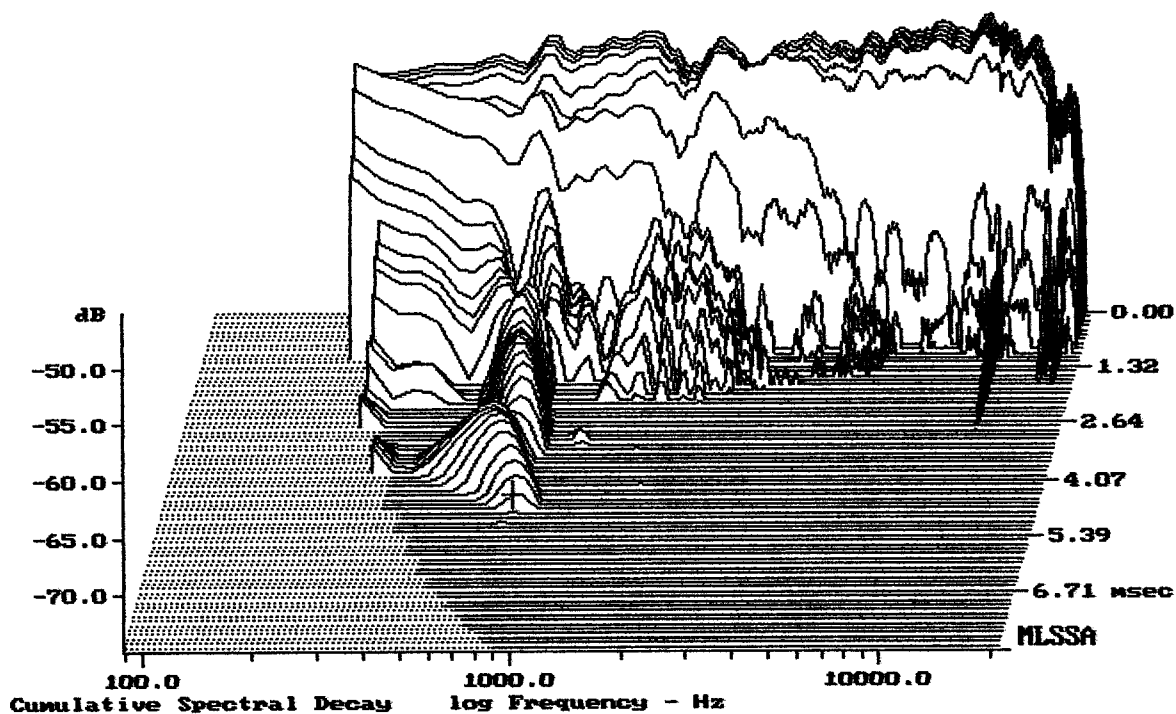


mean: 96.26, rms: 96.49, std: 1.83, max: 99.14, min: 88.64

ART310-A MK III

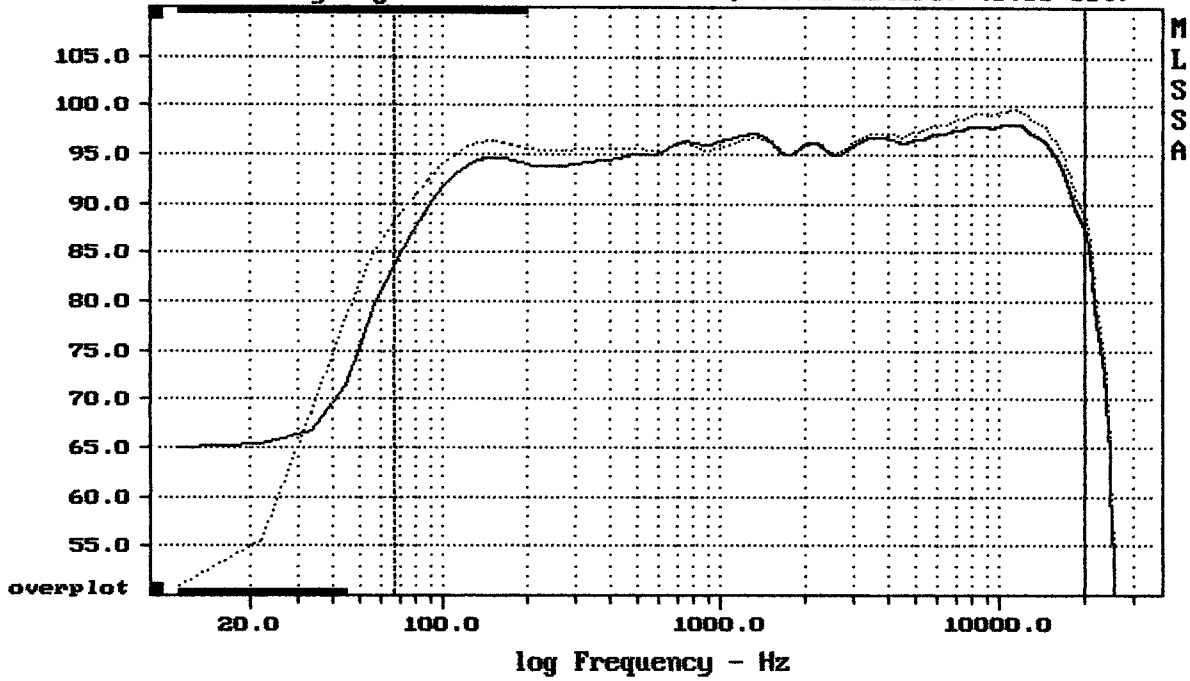
MLSSA: Frequency Domain



-73.71 dB, 799 Hz (18), 4.730 msec (44)

DITO

Sensitivity Mag - dB SPL/watt (4 ohms, @1.65 meters) (0.33 oct)

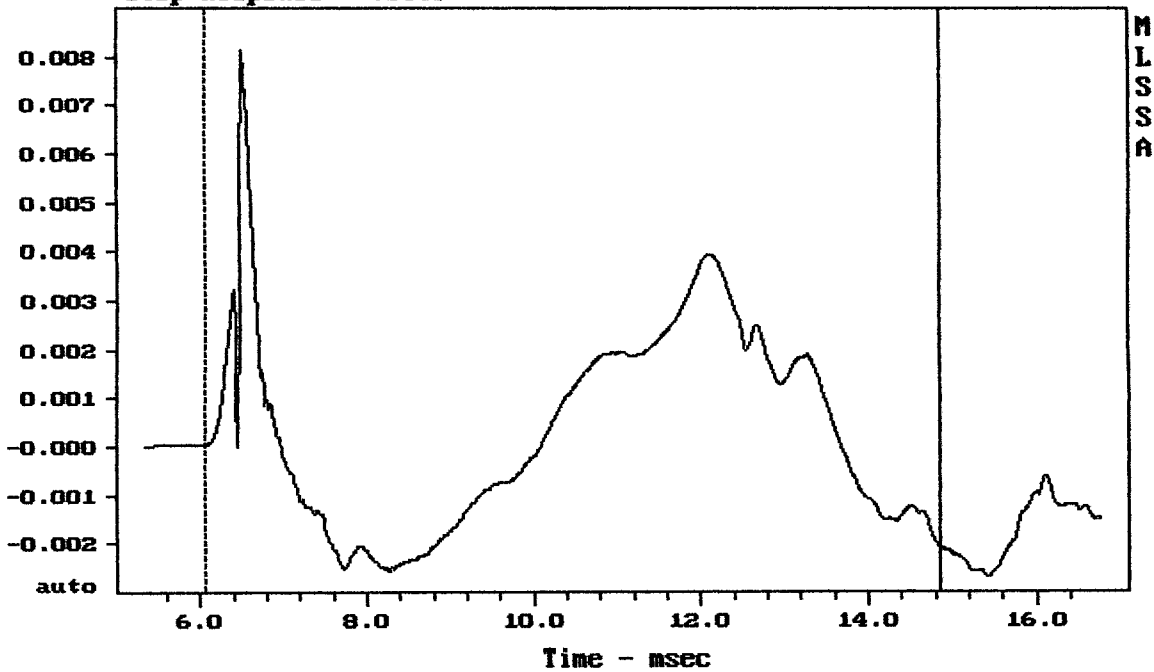


Overlay Compare: dev= +3.3/-1.8, std= 0.56, avg= 1.1

ART310-A MK III

MLSSA: Frequency Domain

Step Response - volts

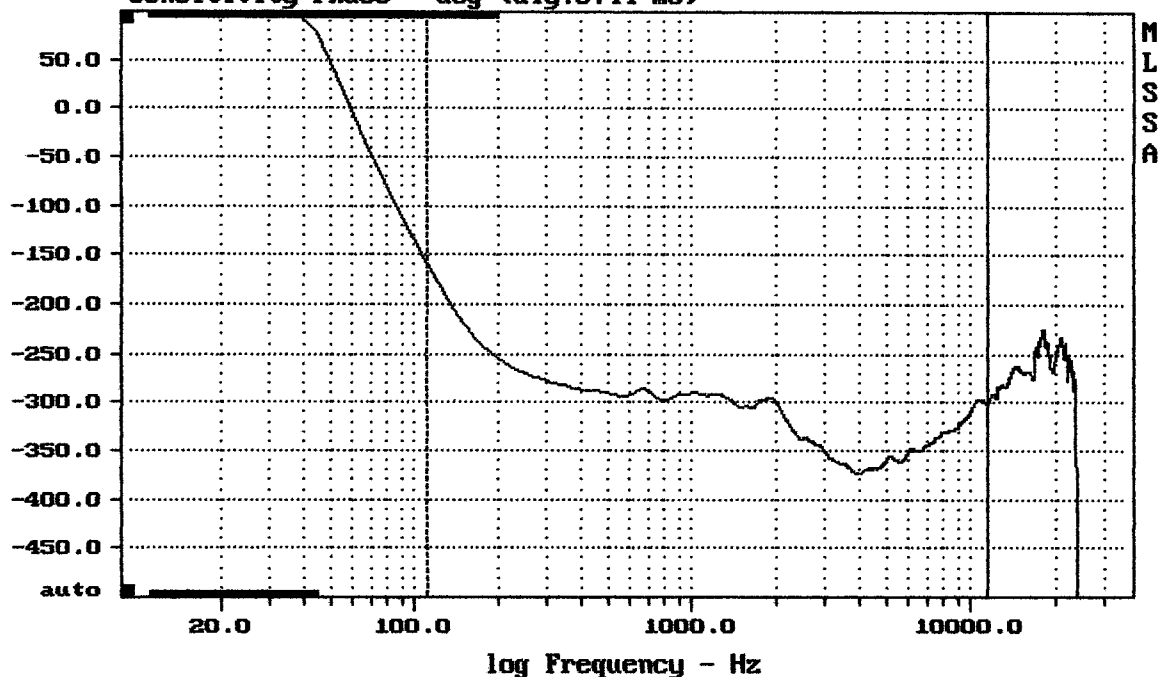


mean: 0.0003139, rms: 0.002059, std: 0.002035, max: 0.008136, min: -0.002566

ART310-A MK III

MLSSA: Time Domain

Sensitivity Phase - deg (dly:0.44 ms)



---

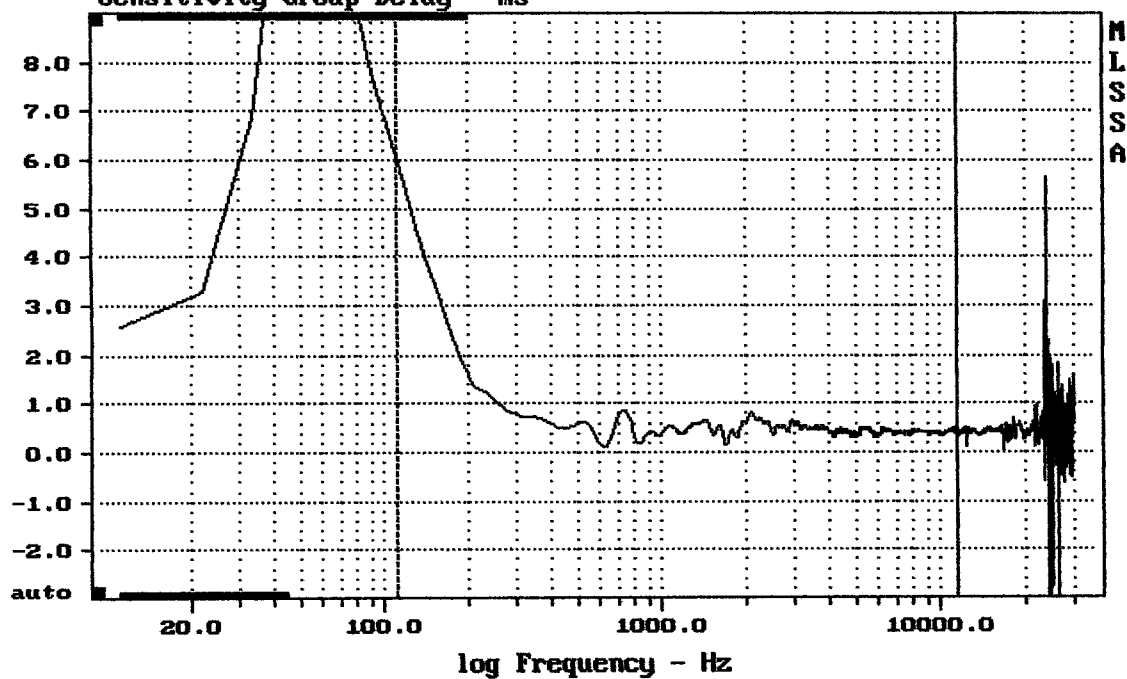
mean: -329.6, rms: 330.8, std: 28.93, max: -158.8, min: -374.1

---

ART310-A MK III

MLSSA: Frequency Domain

Sensitivity Group Delay - ms



---

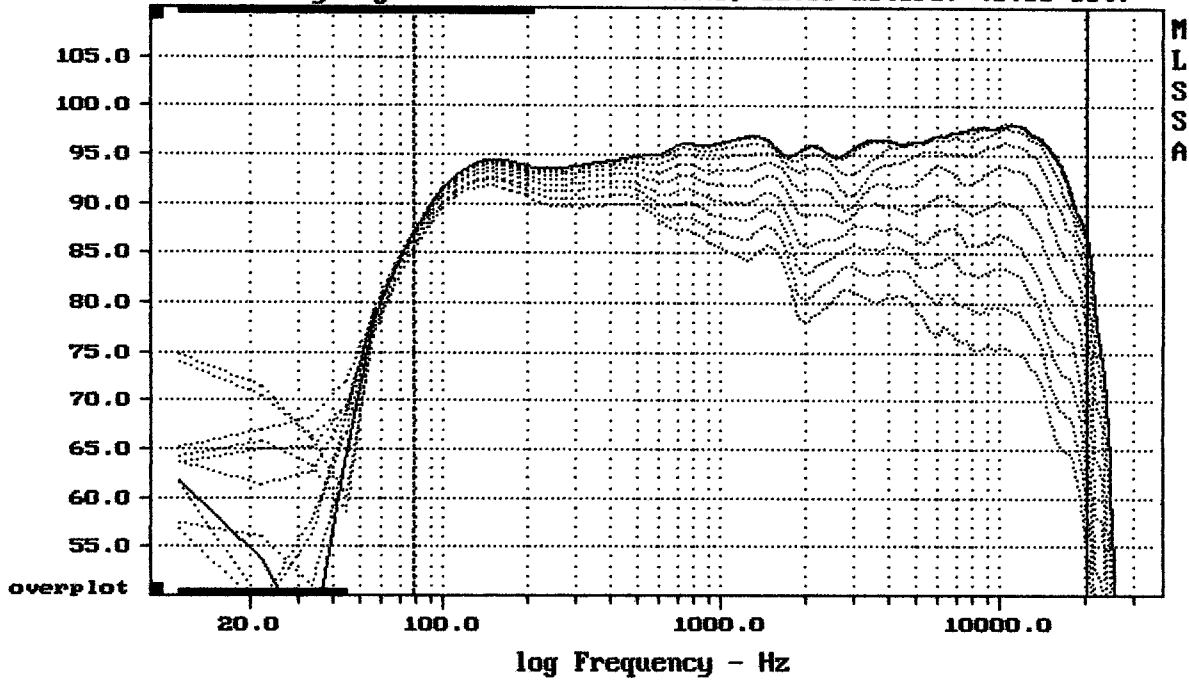
mean: 0.4809, rms: 0.5861, std: 0.335, max: 6.079, min: 0.09924

---

ART310-A MK III

MLSSA: Frequency Domain

Sensitivity Mag - dB SPL/watt (4 ohms, @1.65 meters) (0.33 oct)

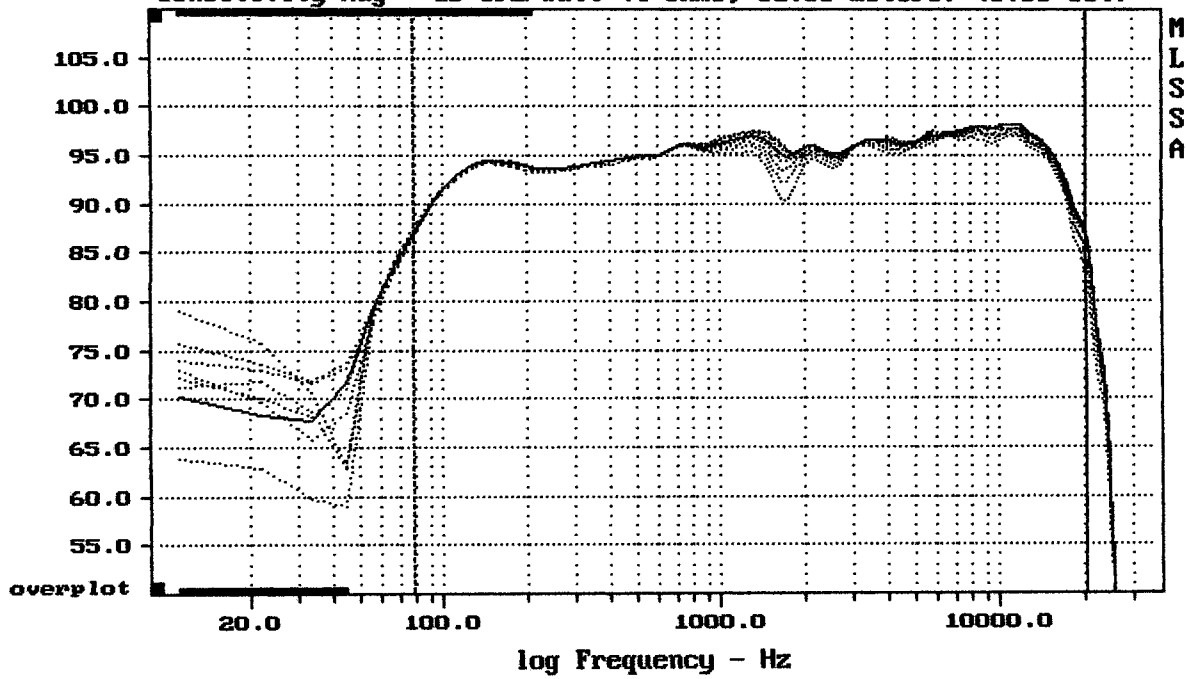


Overlay Compare: dev= +20/-10, std= 6, avg= -22

ART310-A MK III

MLSSA: Frequency Domain

Sensitivity Mag - dB SPL/watt (4 ohms, @1.65 meters) (0.33 oct)

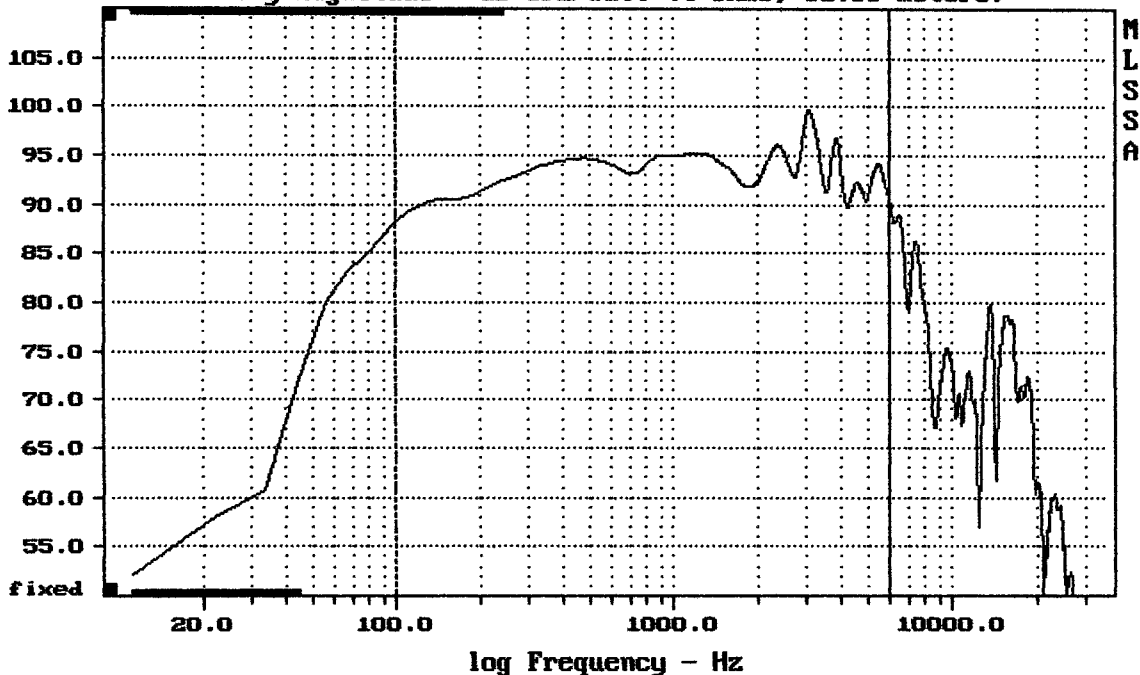


mean: 95.00, rms: 95.29, std: 2.06, max: 97.45, min: 86.62

ART310-A MK III

MLSSA: Frequency Domain

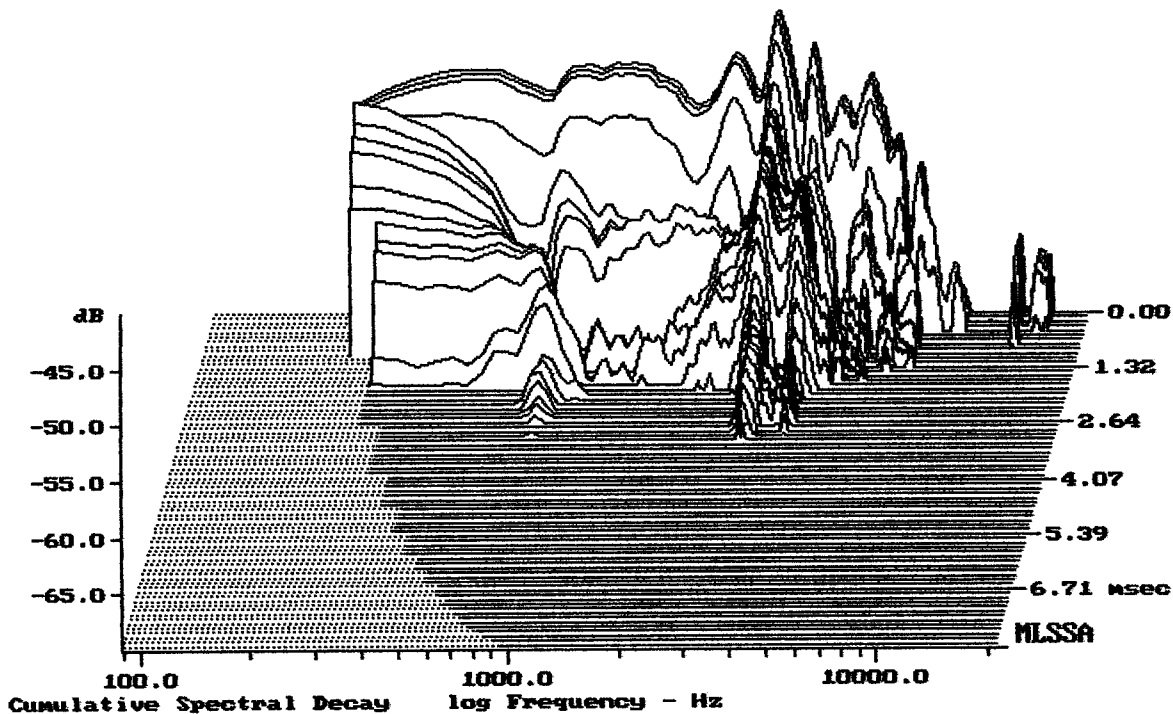
Sensitivity Magnitude - dB SPL/watt (4 ohms, @1.00 meters)



Level (100:6004 Hz) = 93.69 dB SPL/watt (4 ohms, @1.00 meters)

ART310-A MK III

MLSSA: Frequency Domain



-68.59 dB, 2974 Hz (67), 3.000 msec (29)

DTTO

Measured Data

QC Limits

Line	Parameter	Value	Units
1	RMSE-free	0.29	Ohms
2	Fs	76.42	Hz
3	Re	3.26	Ohms[dc]
4	Res	44.44	Ohms
5	Qms	5.14	
6	Qes	0.38	
7	Qts	0.35	
8	L1	0.38	mH
9	L2	0.83	mH
10	R2	3.50	Ohms
11	RMSE-load	0.71	Ohms
12	Vas(Sd)	35.63	liters
13	Mms	22.53	grams
14	Cms	192	$\mu\text{M}/\text{Newton}$
15	B1	9.67	Tesla-M
16	SPLref(Sd)	98.1	dB[Re]
17	Rub-index	0.01	

Method: Mass-loaded (30.00 grams)

Area (Sd): 363.05 sq cm

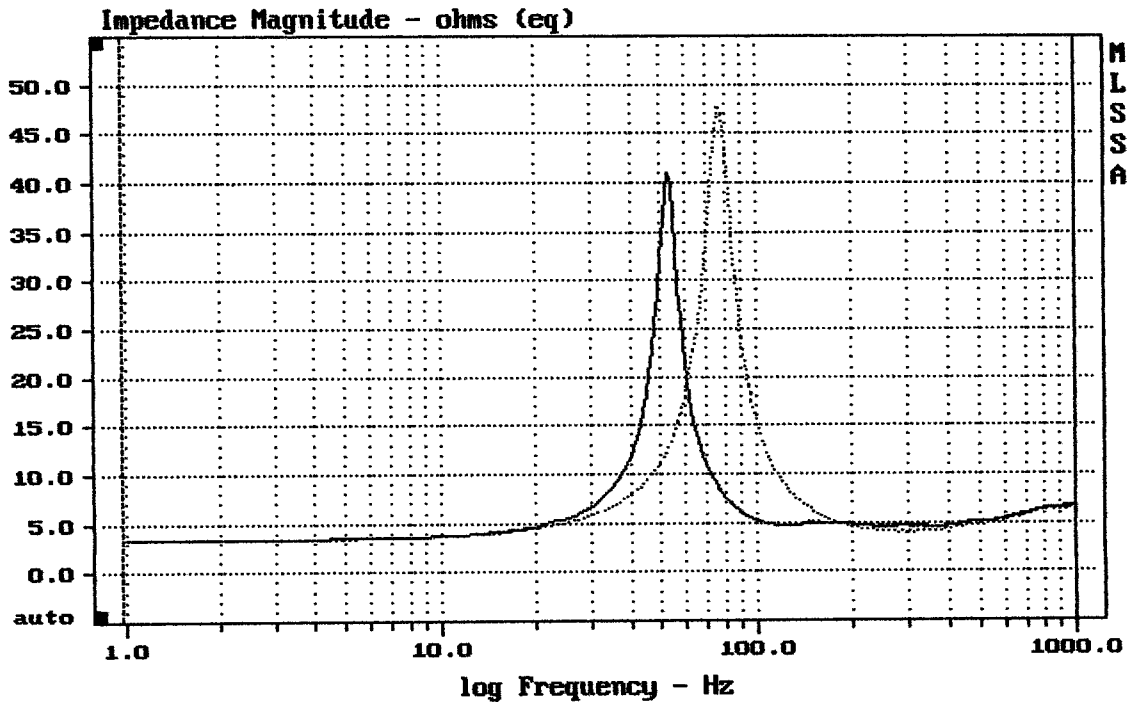
DCR mode: Measure (-0.11 ohms)

QC file: CLOSED

Analysis successful. Shift in Fs = -31.3% (-20% to -50% is recommended).

ART310-A MK III

MLSSA: Parameters



mean: 6.604, rms: 8.612, std: 5.527, max: 47.62, min: 3.372

DTTO

MLSSA: Frequency Domain