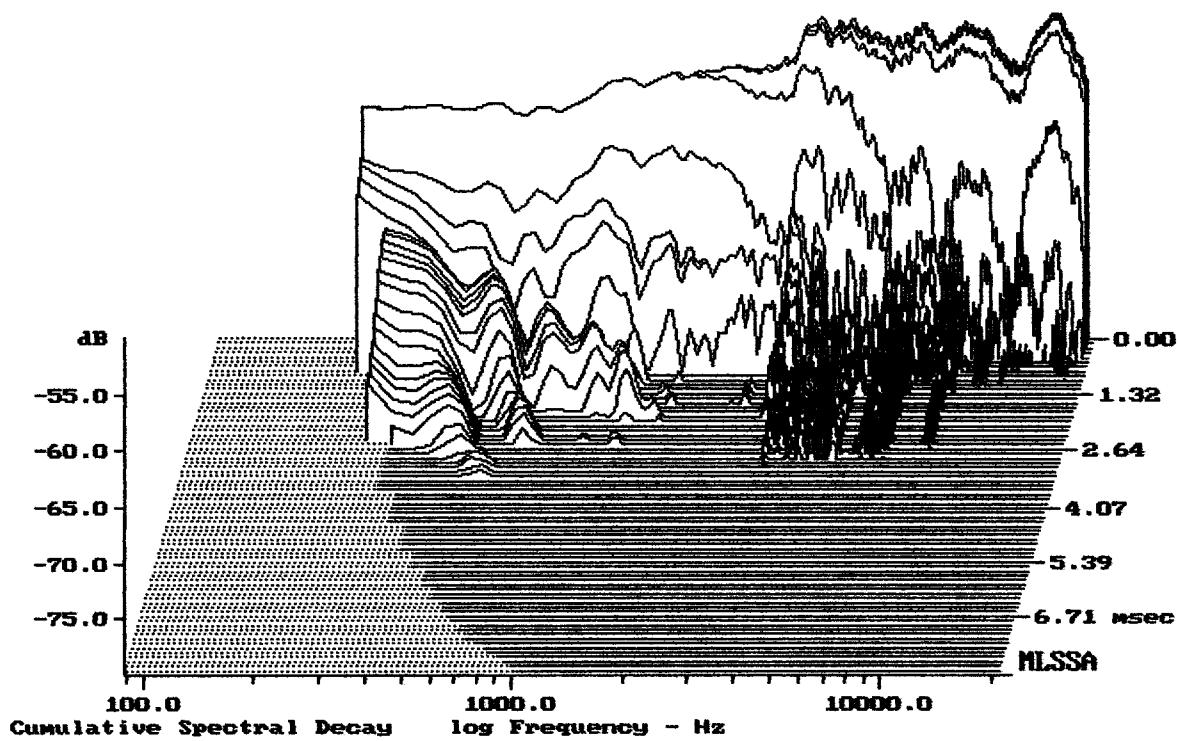


mean: 91.48, rms: 91.82, std: 2.19, max: 94.98, min: 83.45

MR6 MK3

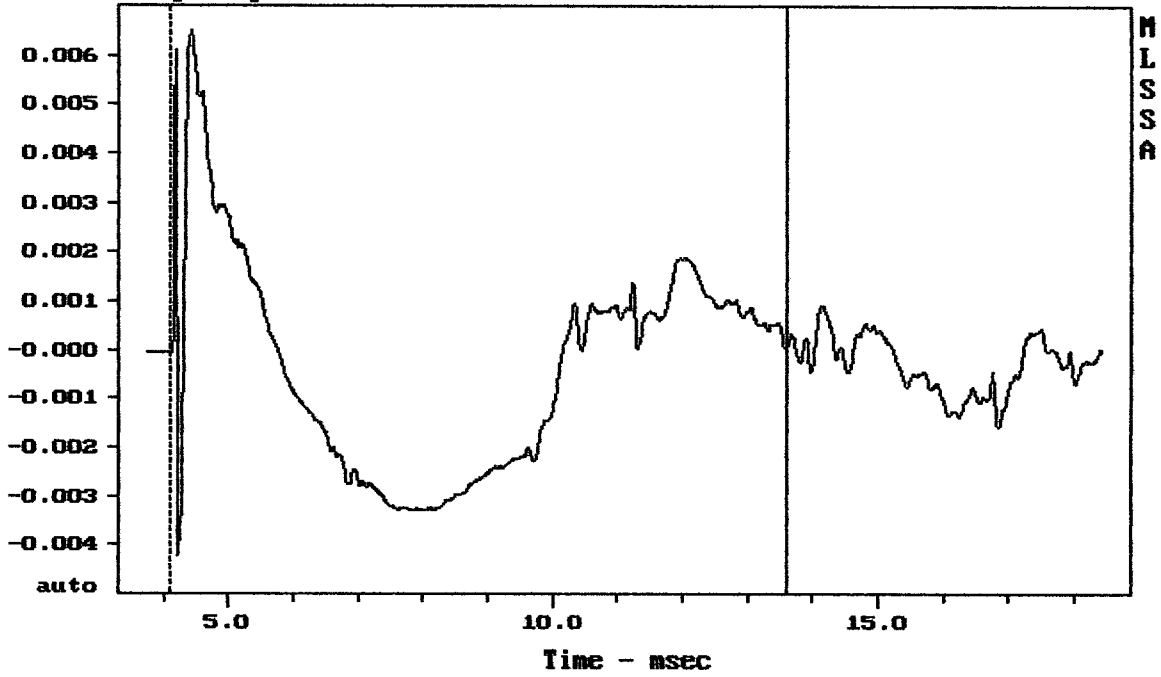
MLSSA: Frequency Domain



-79.64 dB, 3285 Hz (74), 2.860 msec (27)

DTTO

Step Response - volts



---

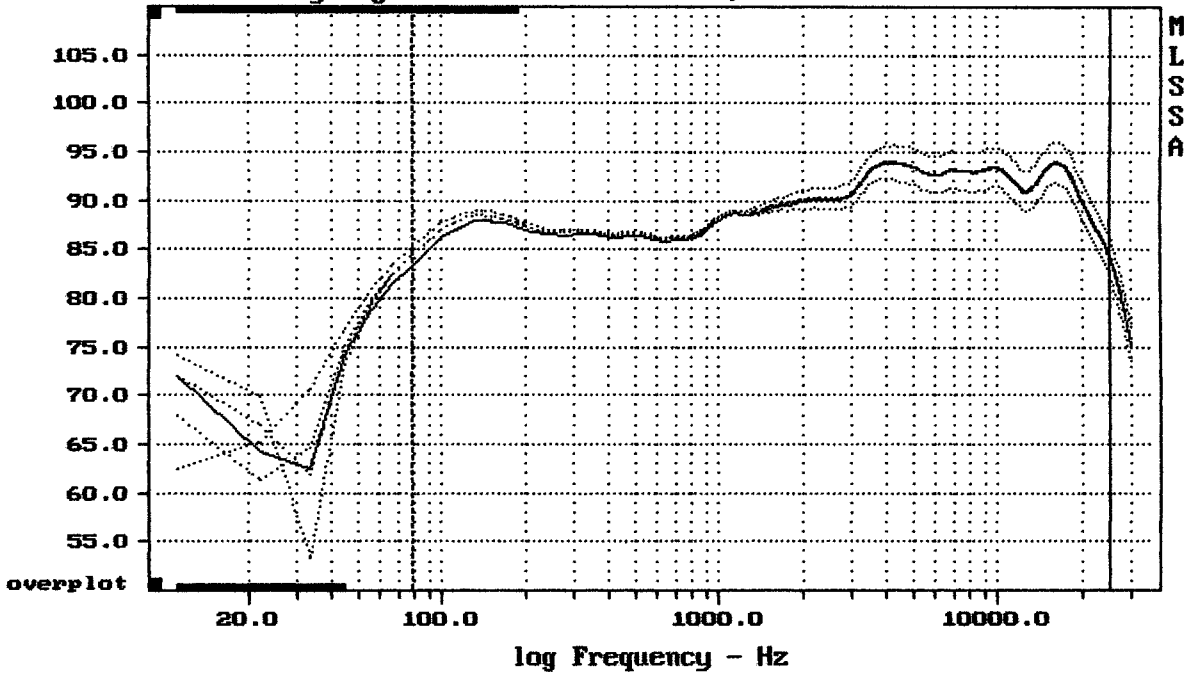
mean: -0.000359, rms: 0.002223, std: 0.002194, max: 0.006484, min: -0.00422

---

MR6 MK3

MLSSA: Time Domain

Sensitivity Mag - dB SPL/watt (4 ohms, @1.40 meters) (0.33 oct)



---

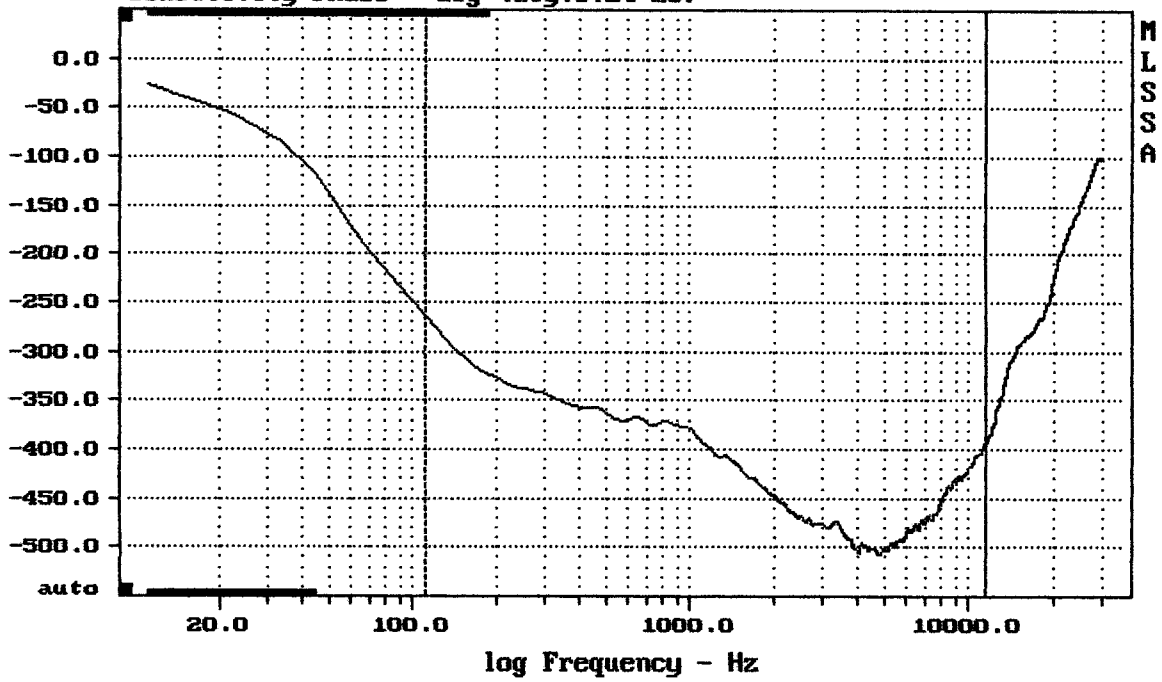
mean: 93.37, rms: 93.69, std: 2.12, max: 96.00, min: 84.47

---

MR6 MK3

MLSSA: Frequency Domain

Sensitivity Phase - deg (dly:0.24 ms)



---

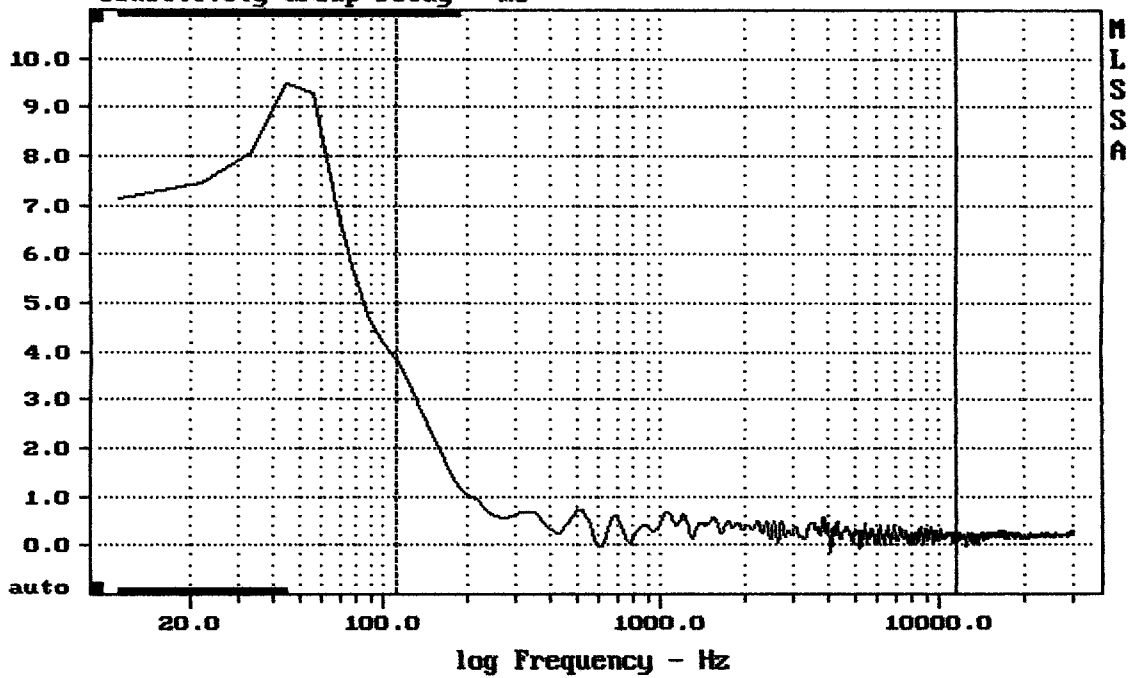
mean: -448.8, rms: 458.8, std: 42.69, max: -263.8, min: -507.3

---

MR6 MK3

MLSSA: Frequency Domain

Sensitivity Group Delay - ms



---

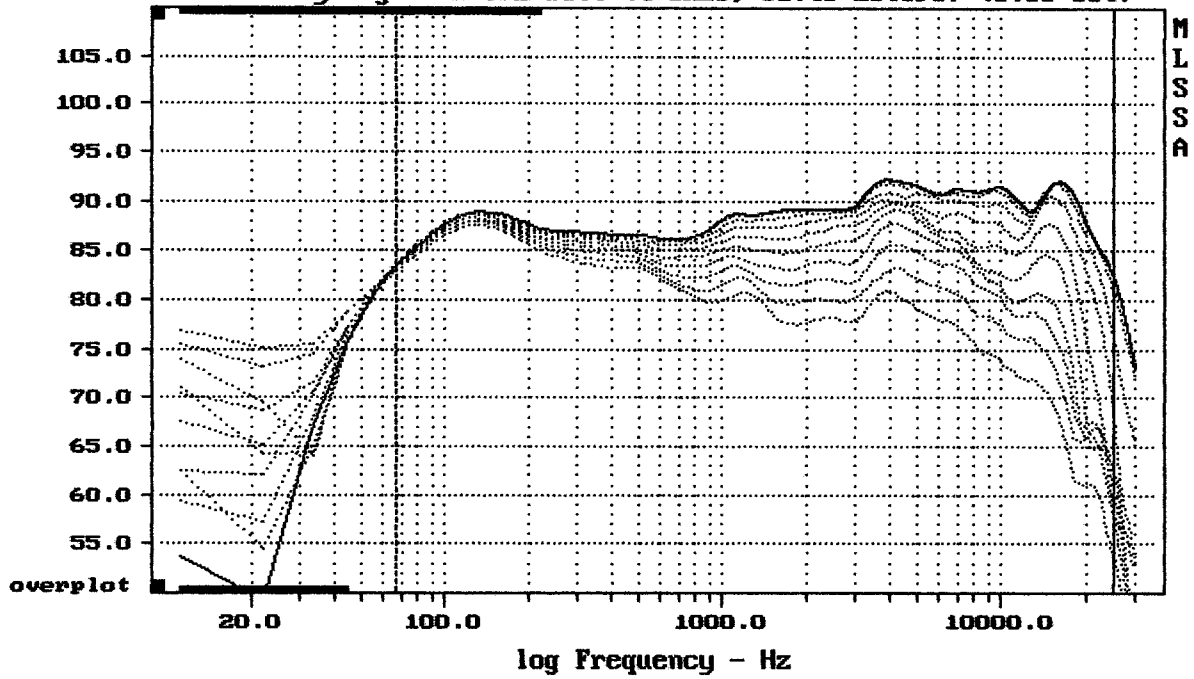
mean: 0.274, rms: 0.3711, std: 0.2502, max: 3.821, min: -0.1562

---

MR6 MK3

MLSSA: Frequency Domain

Sensitivity Mag - dB SPL/watt (4 ohms, @1.40 meters) (0.33 oct)

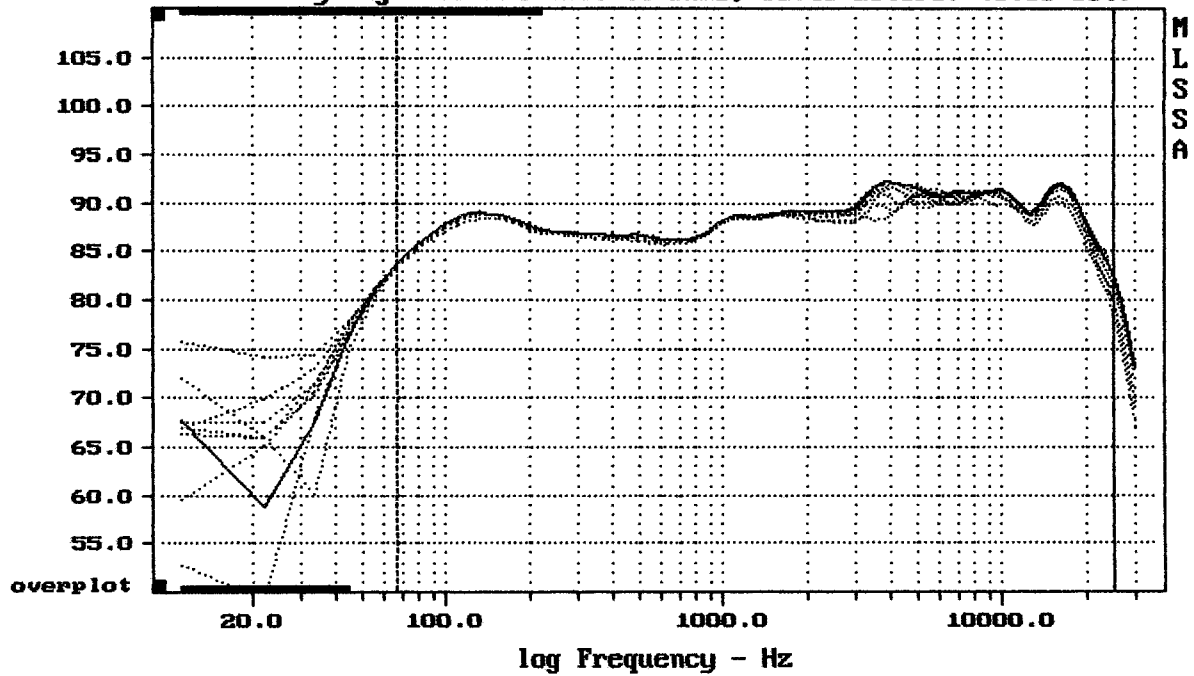


Overlay Compare: dev= +19/-10, std= 6.9, avg= -19

MR6 MK3

MLSSA: Frequency Domain

Sensitivity Mag - dB SPL/watt (4 ohms, @1.40 meters) (0.33 oct)



CURSOR: y = 79.7643 x = 25002.2187 (2253)

MR6 MK3

MLSSA: Frequency Domain