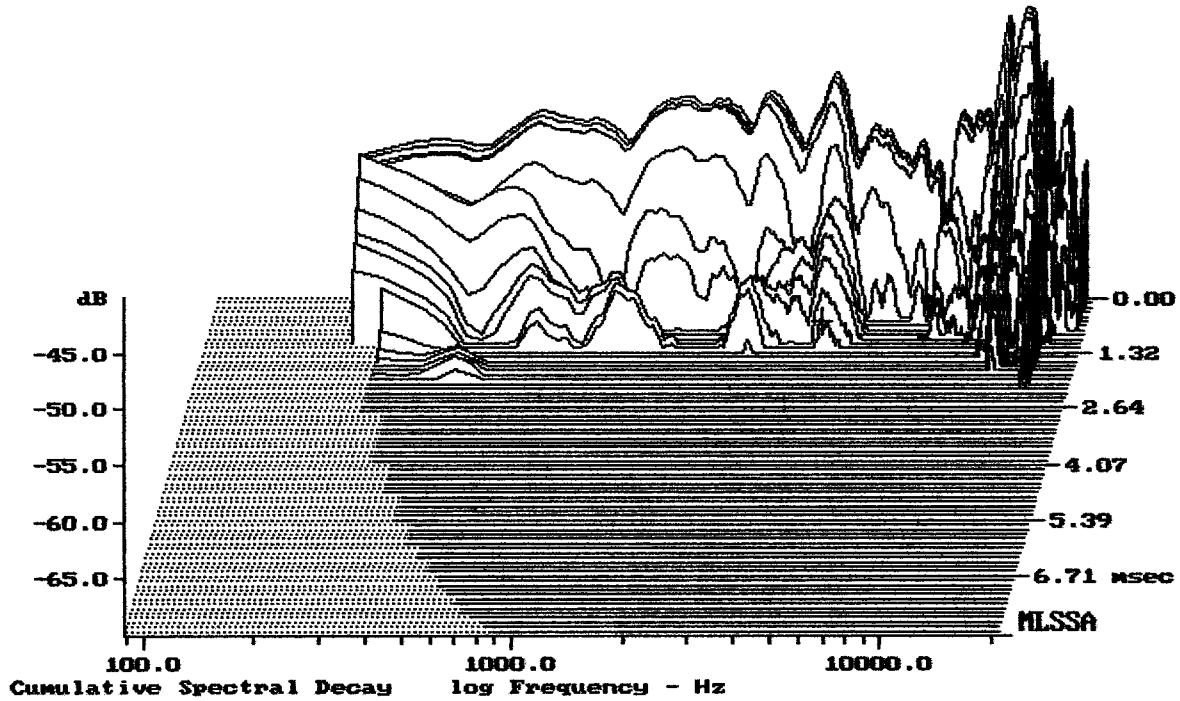


Level (100:10710 Hz) = 92.24 dB SPL/watt (8 ohms, @1.00 meters)

PL6X

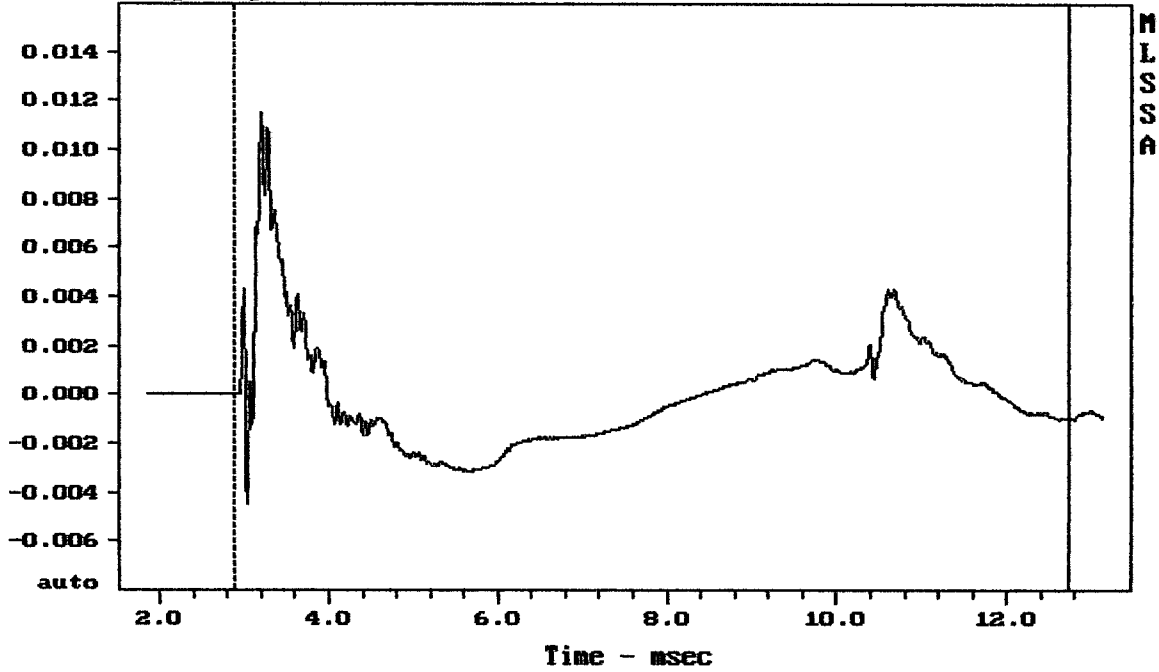
MLSSA: Frequency Domain



-67.54 dB, 4217 Hz (95), 1.218 msec (12)

DTTO

Step Response - volts



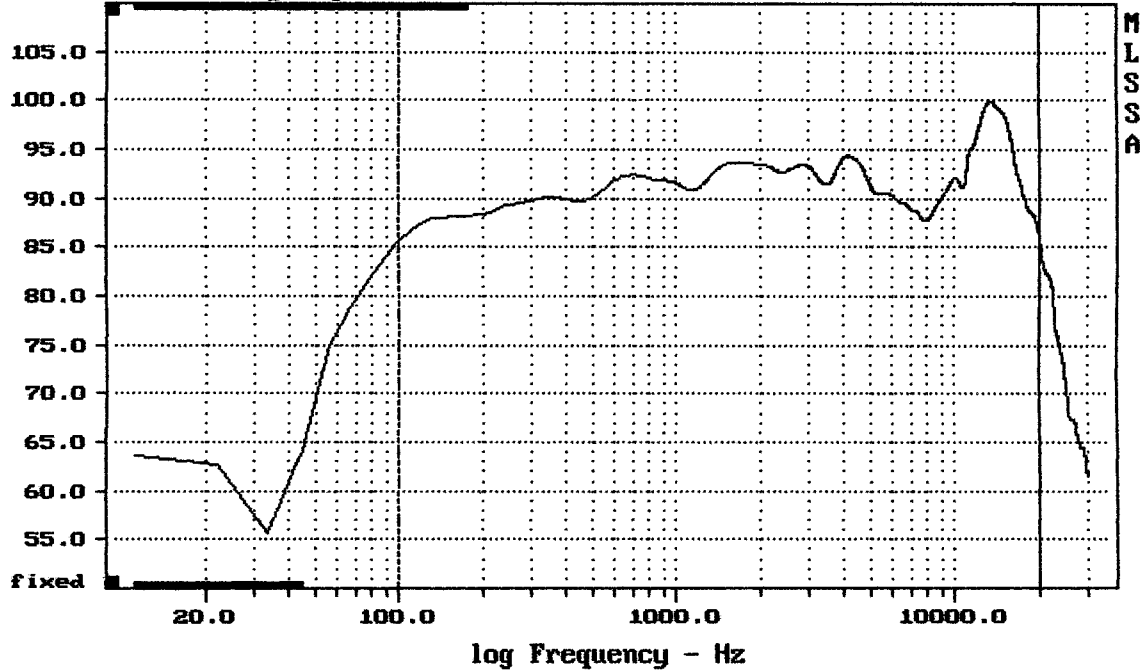
MLSSA

mean: -9.564×10^{-6} , rms: 0.002277, std: 0.002277, max: 0.0115, min: -0.004456

PL6X

MLSSA: Time Domain

Sensitivity Mag - dB SPL/watt (8 ohms, 01.00 meters) (0.33 oct)

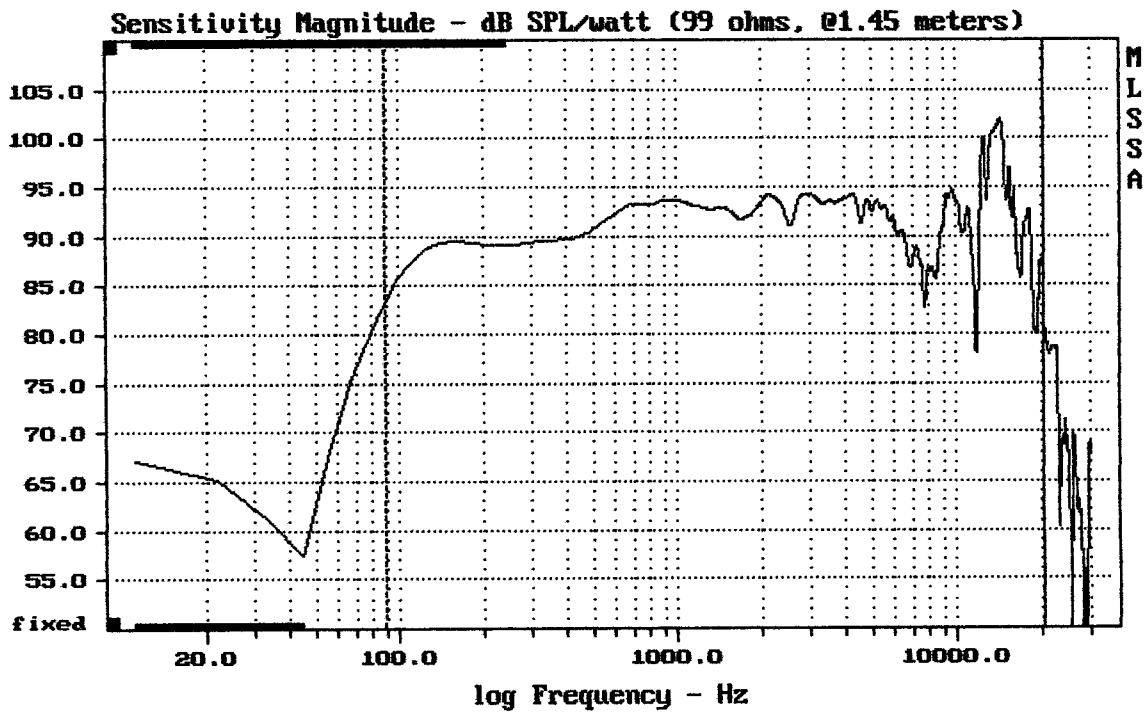


MLSSA

mean: 93.43, rms: 94.27, std: 3.30, max: 99.89, min: 85.65

PL6X

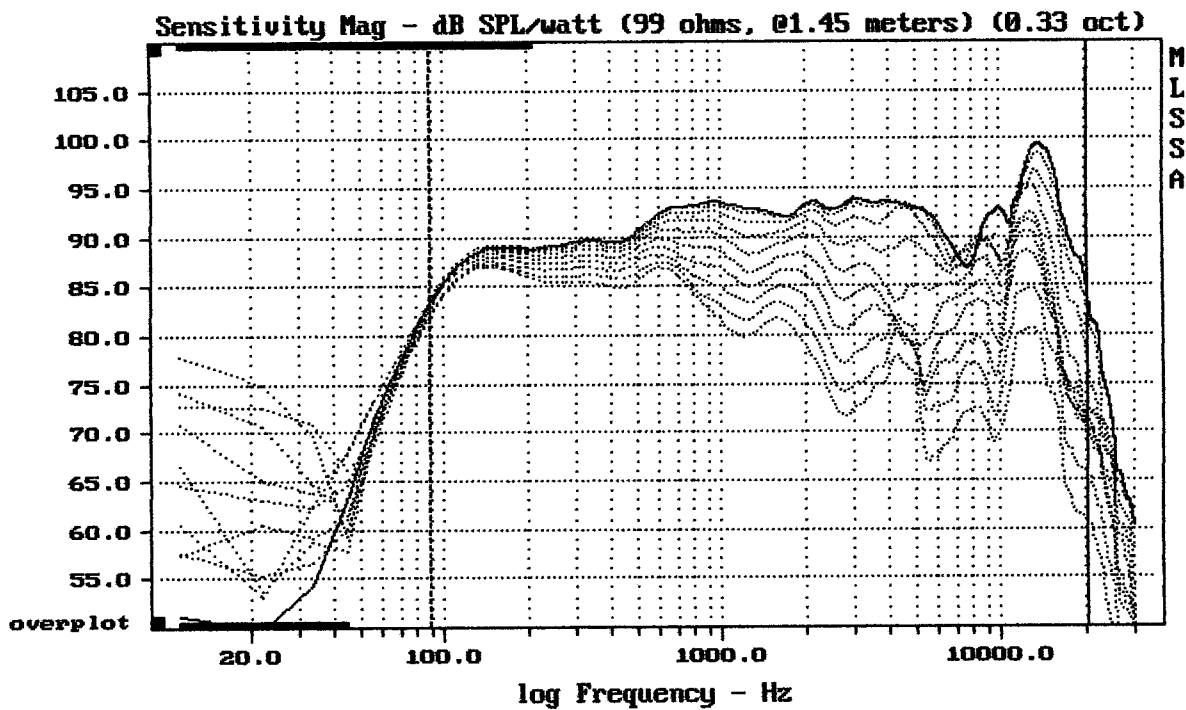
MLSSA: Frequency Domain



Level (89:20500 Hz) = 92.38 dB SPL/watt (99 ohms, @1.45 meters)

PL6X

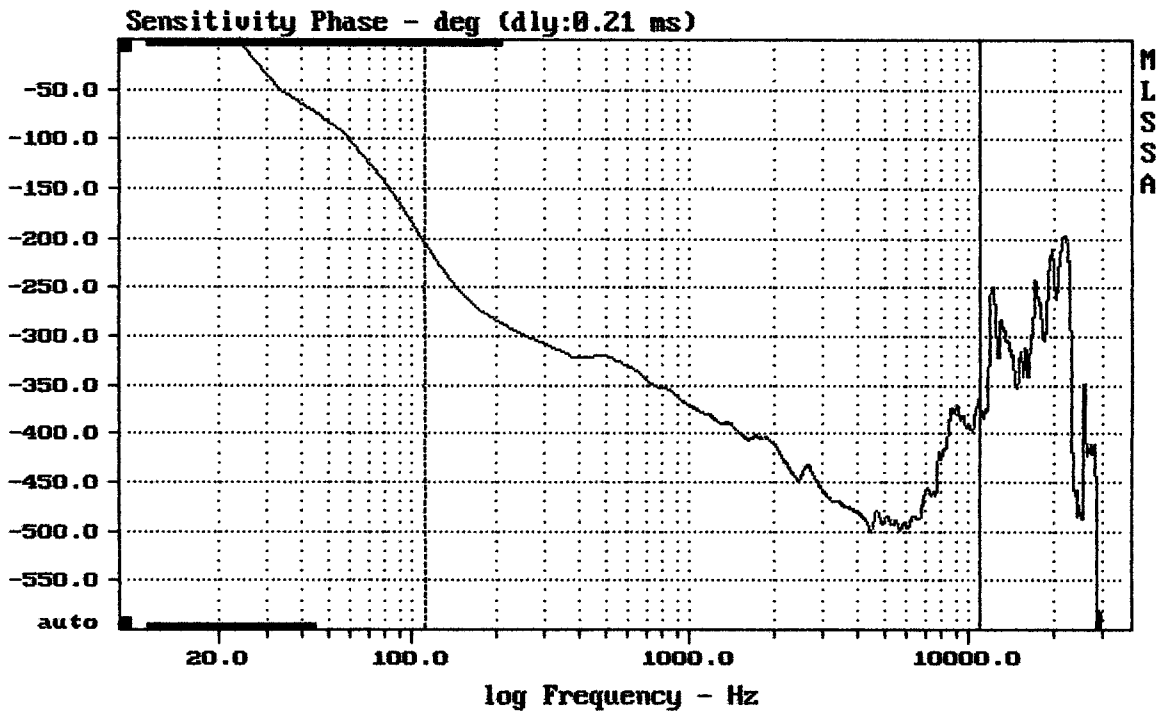
MLSSA: Frequency Domain



Overlay Compare: dev= +19/-7.4, std= 5.2, avg= -20

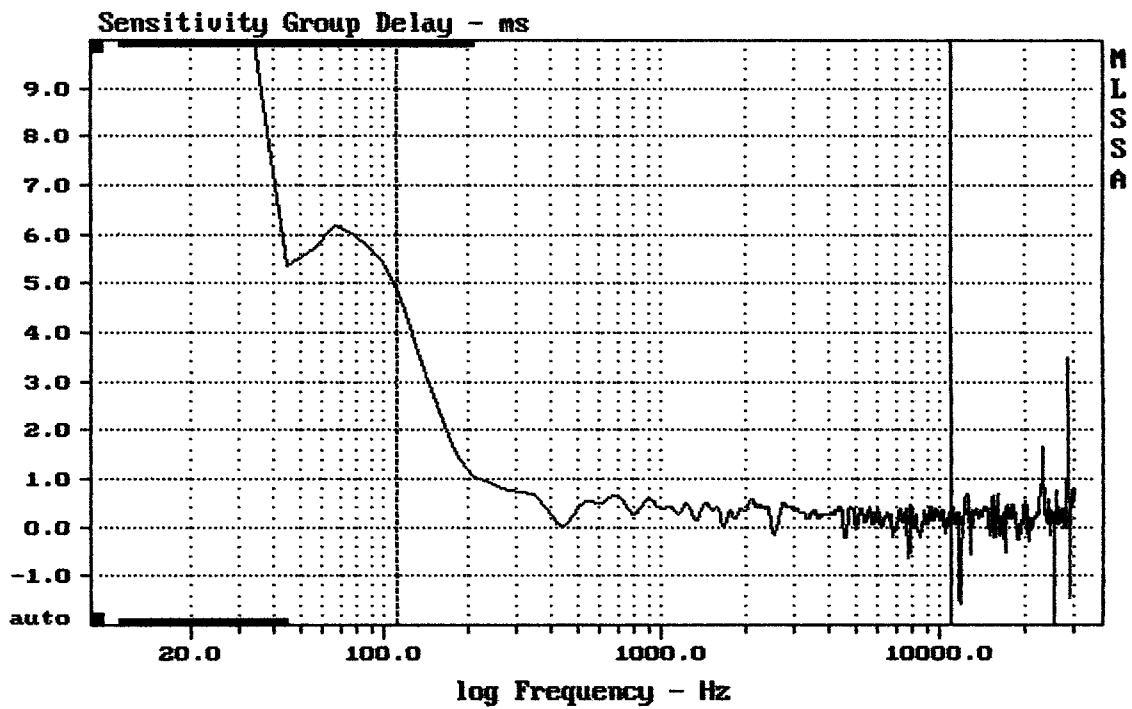
PL6X TRAF0

MLSSA: Frequency Domain



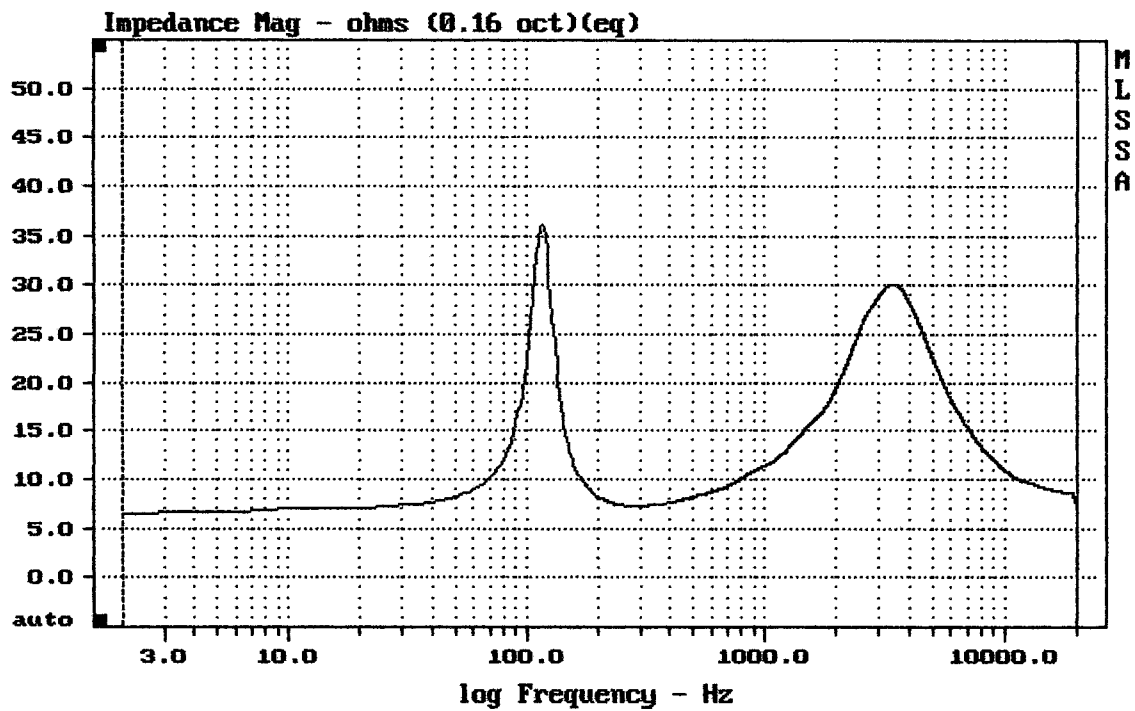
PL6X TRAF0

MLSSA: Frequency Domain



PL6X TRAF0

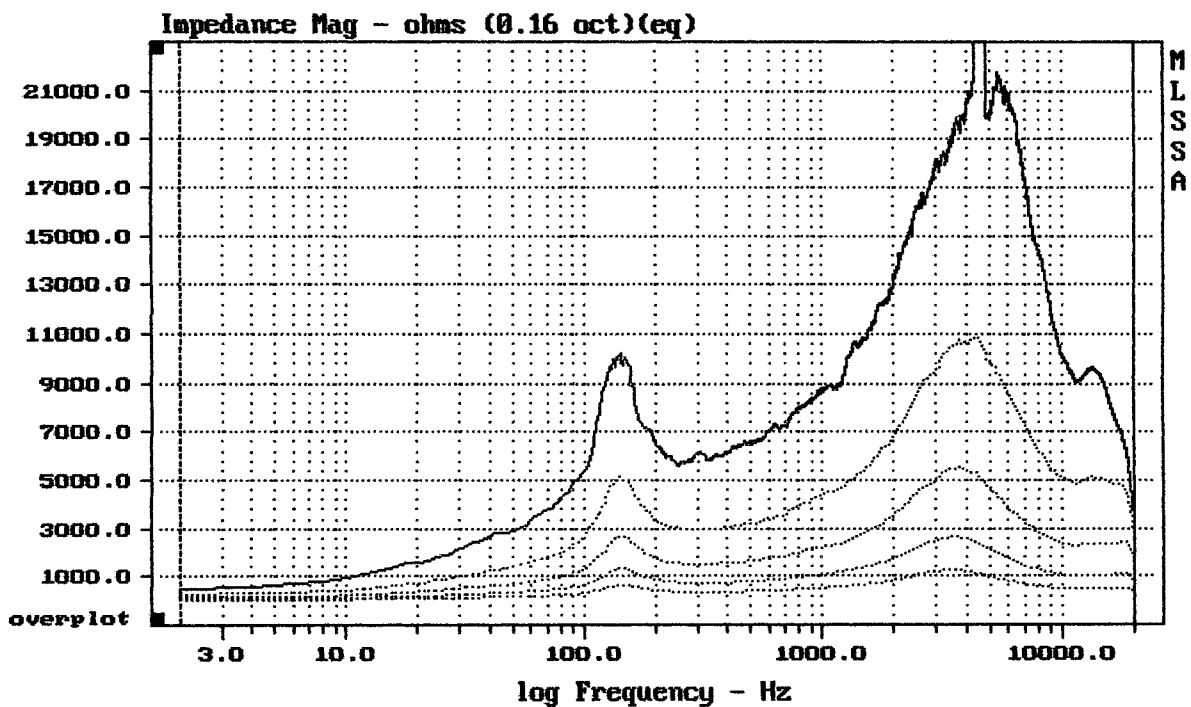
MLSSA: Frequency Domain



mean: 13.64, rms: 15.1, std: 6.48, max: 36.1, min: 6.545

PL6X

MLSSA: Frequency Domain



mean: 628.6, rms: 666.4, std: 242.7, max: 1249, min: 34.65

PL6X

MLSSA: Frequency Domain