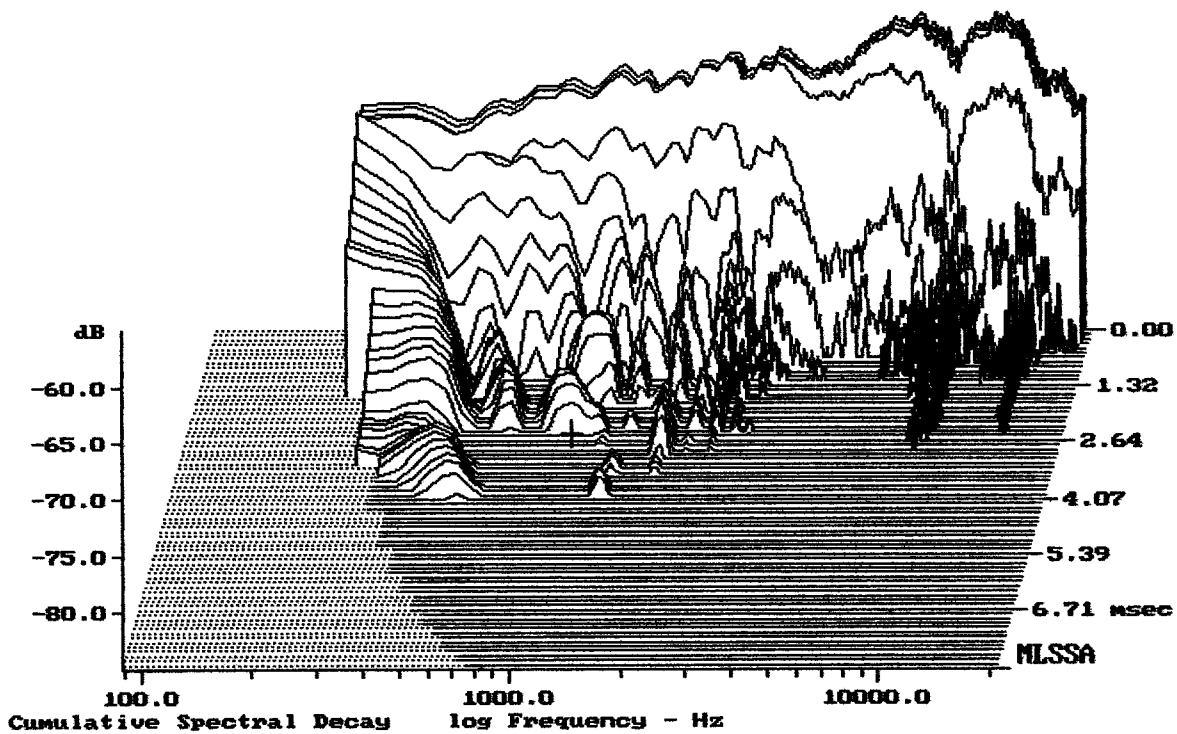


Level (100:24414 Hz) = 89.78 dB SPL/watt (16 ohms, @1.30 meters)

MQ50

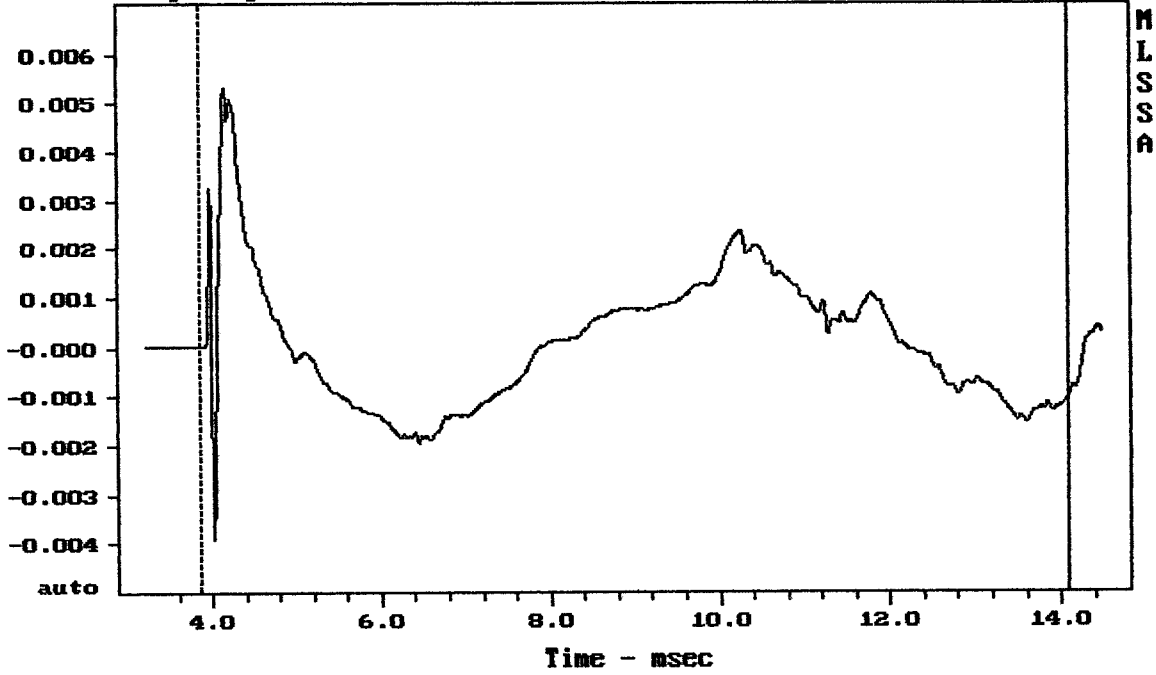
MLSSA: Frequency Domain



-84.73 dB, 977 Hz (22), 2.530 msec (24)

DTTO

Step Response - volts

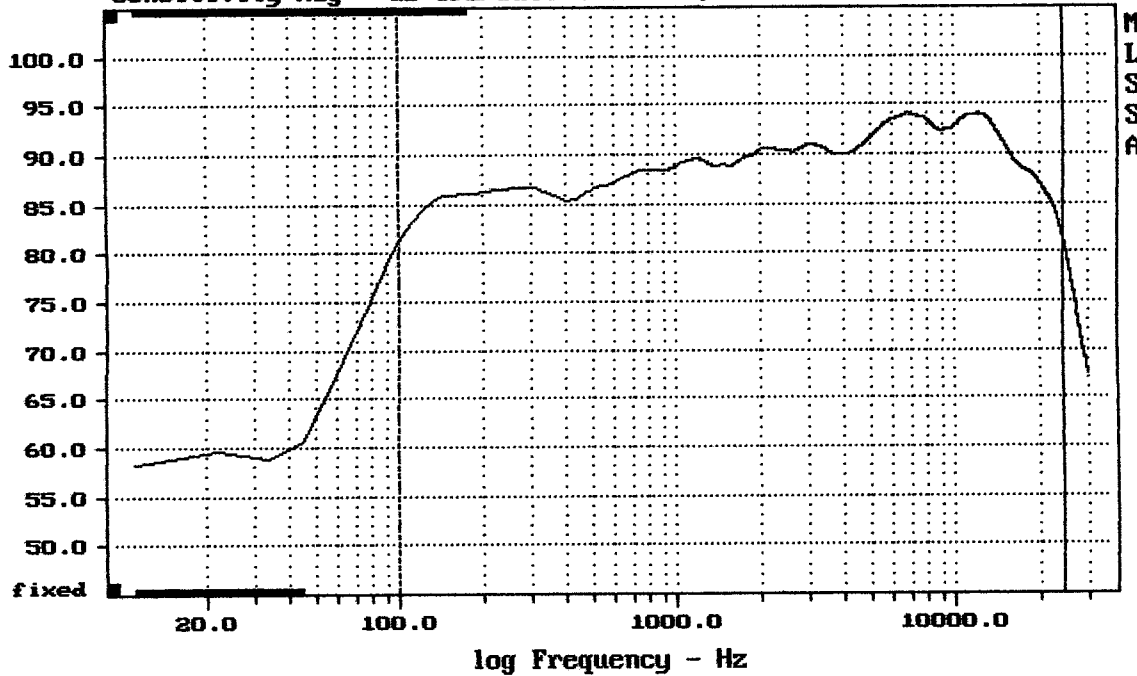


mean: 8.163e-005, rms: 0.001336, std: 0.001333, max: 0.005332, min: -0.003906

MQ50

MLSSA: Time Domain

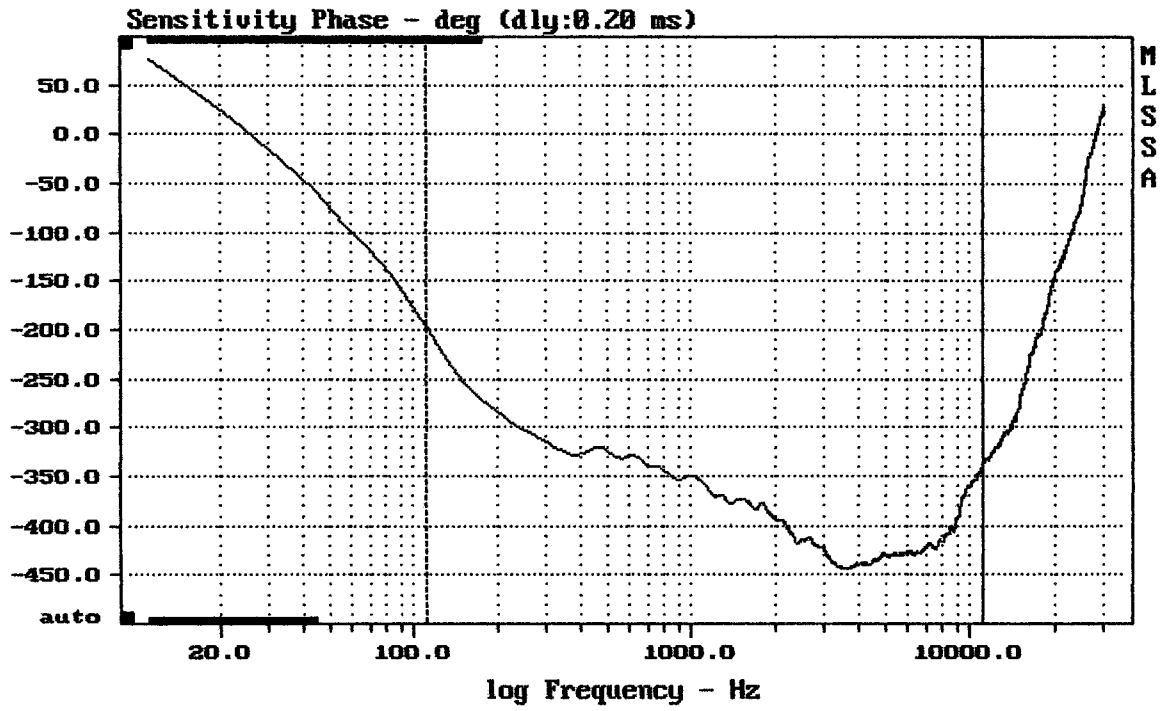
Sensitivity Mag - dB SPL/watt (16 ohms, @1.30 meters) (0.33 oct)



mean: 90.58, rms: 91.05, std: 2.52, max: 94.02, min: 81.26

MQ50

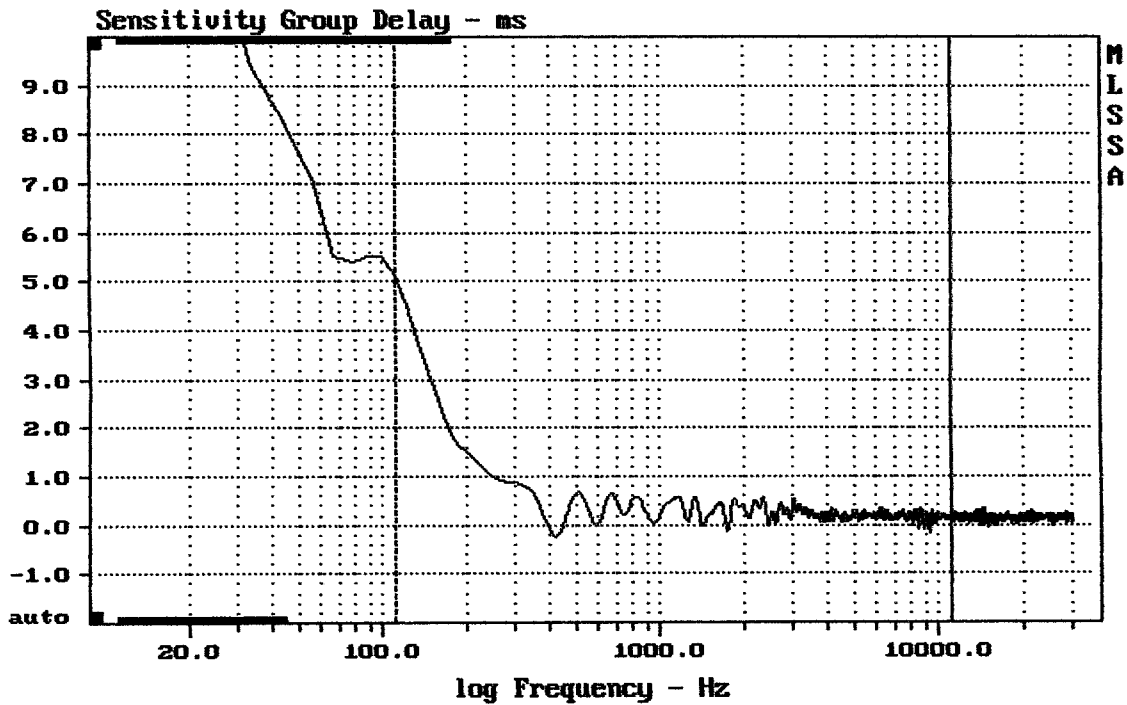
MLSSA: Frequency Domain



mean: -399.1, rms: 400.9, std: 37.68, max: -196.9, min: -444.3

MQ50

MLSSA: Frequency Domain

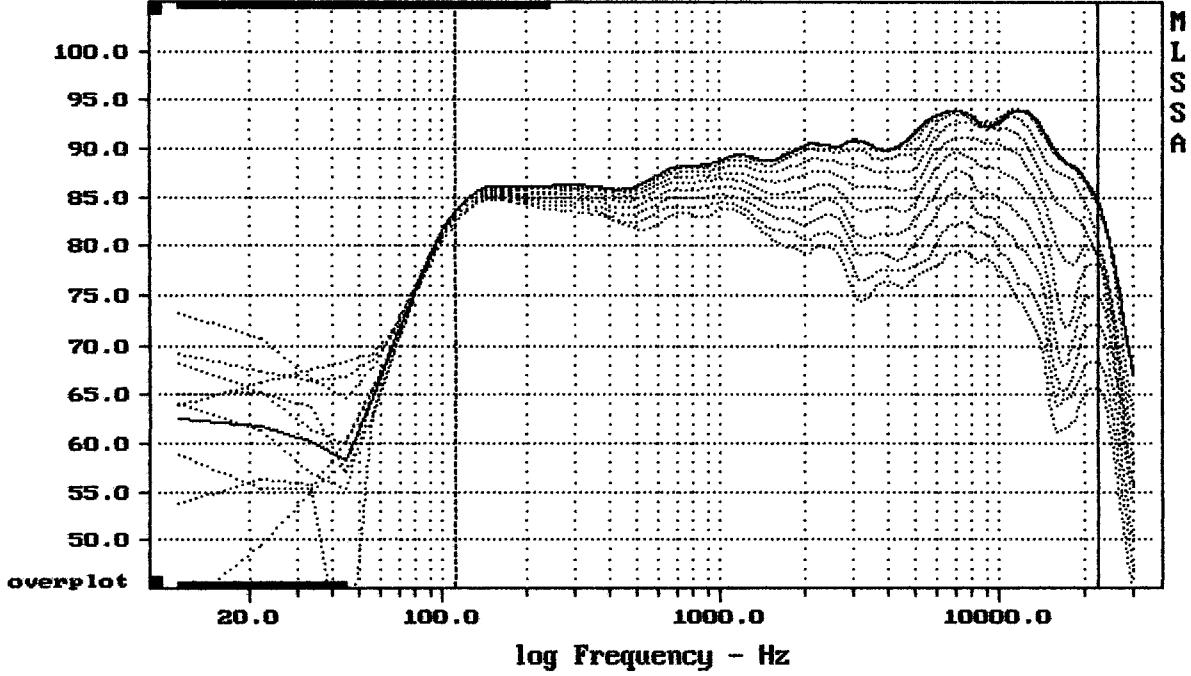


mean: 0.2386, rms: 0.4061, std: 0.3285, max: 5.148, min: -0.2288

MQ50

MLSSA: Frequency Domain

Sensitivity Mag - dB SPL/watt (16 ohms, @1.30 meters) (0.33 oct)

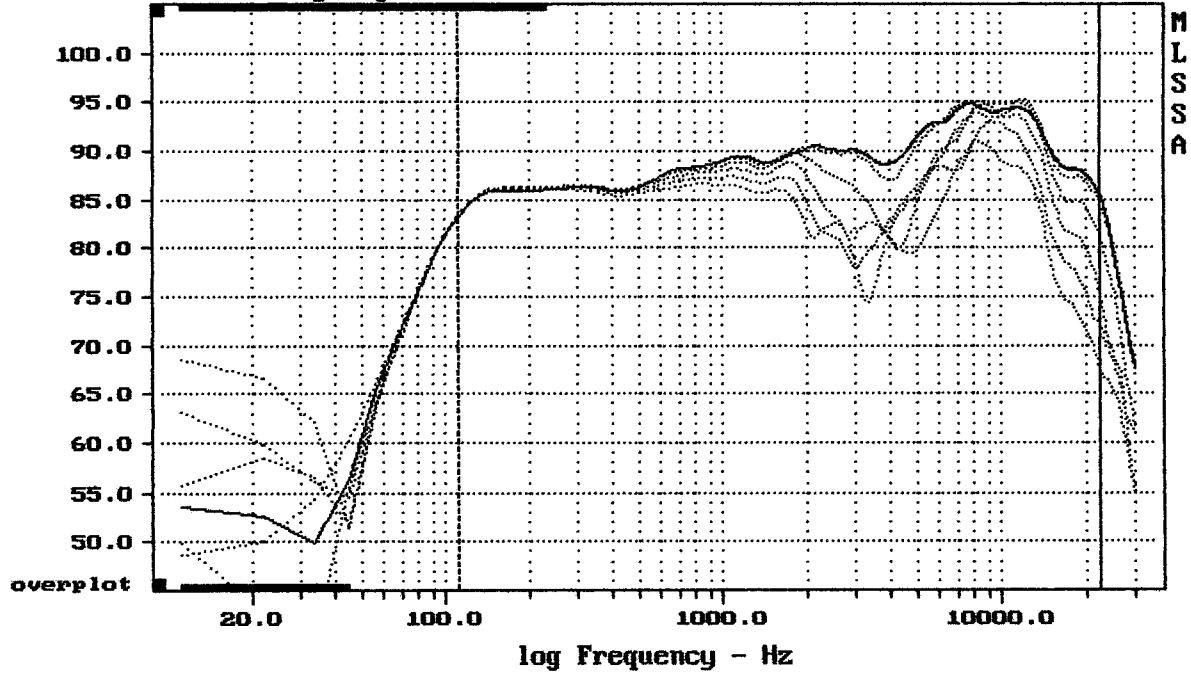


Overlay Compare: dev= +17/-10, std= 6.1, avg= -18

MQ50

MLSSA: Frequency Domain

Sensitivity Mag - dB SPL/watt (16 ohms, @1.30 meters) (0.33 oct)

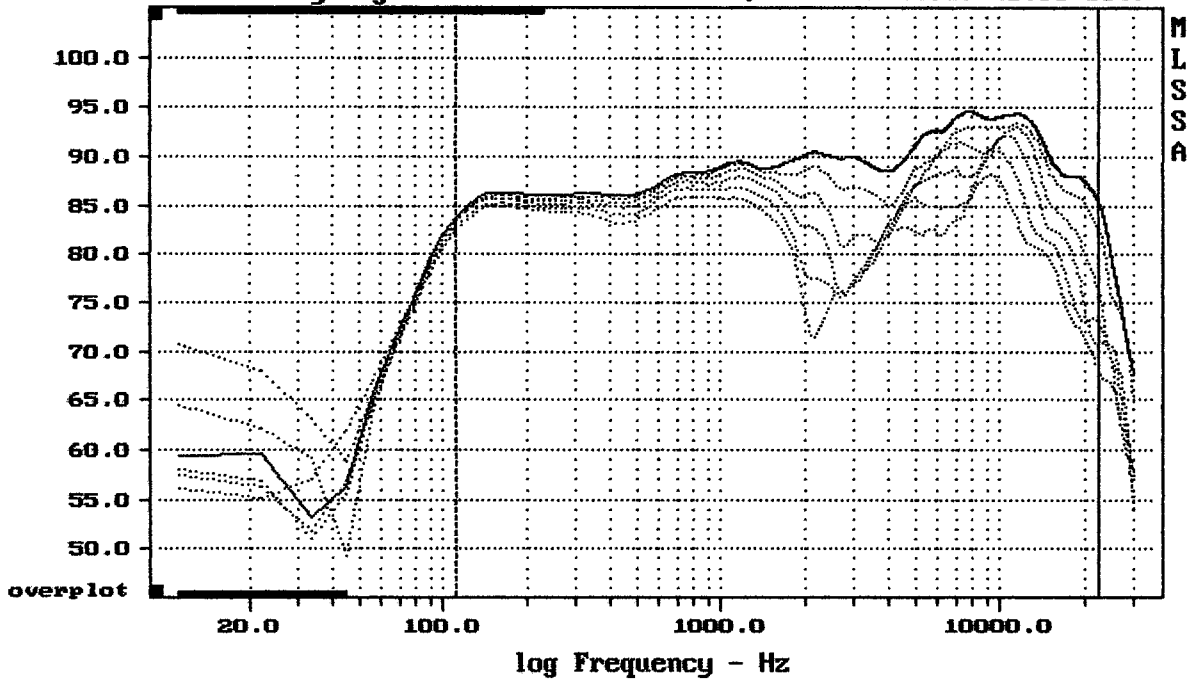


Overlay Compare: dev= +9.5/-8.8, std= 4.6, avg= -9.3

MQ50

MLSSA: Frequency Domain

Sensitivity Mag - dB SPL/watt (16 ohms, @1.30 meters) (0.33 oct)

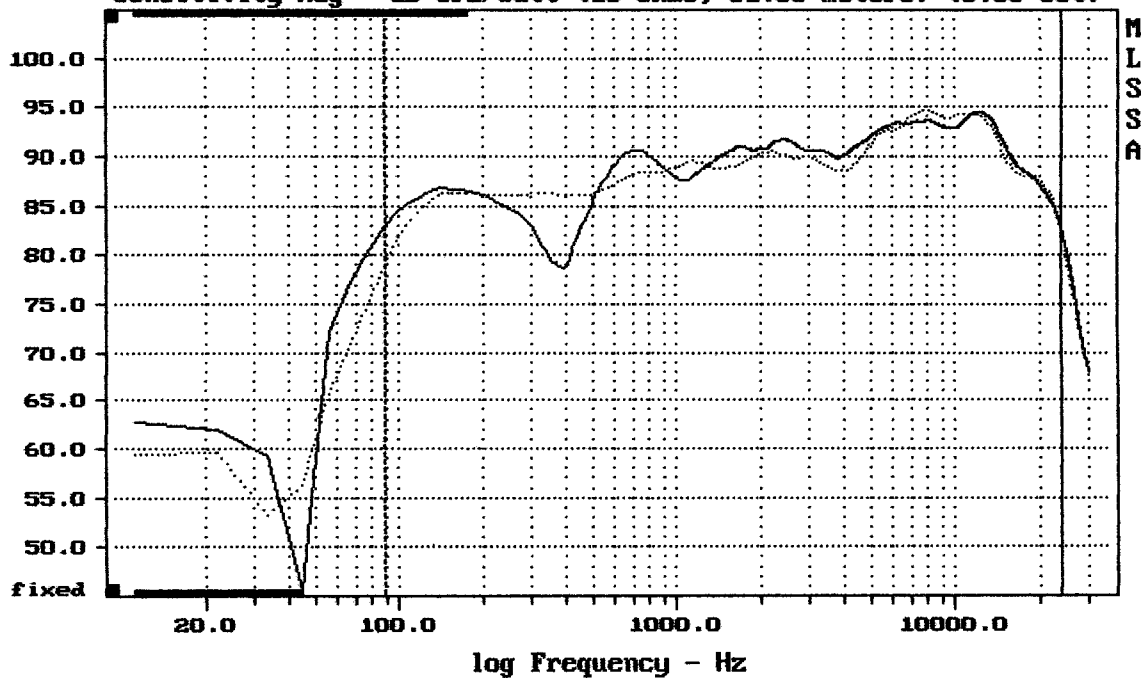


Overlay Compare: dev= +9.8/-7.9, std= 3.9, avg= -11

MQ50

MLSSA: Frequency Domain

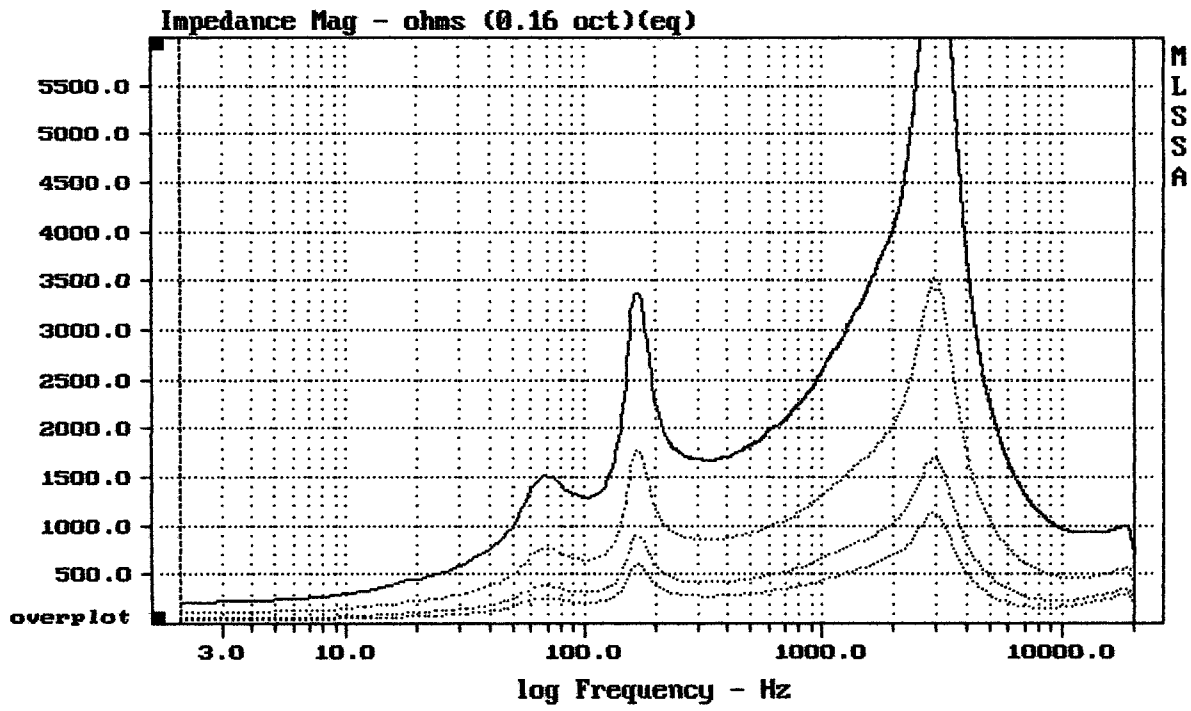
Sensitivity Mag - dB SPL/watt (16 ohms, @1.30 meters) (0.33 oct)



Overlay Compare: dev= +3.8/-7.6, std= 0.96, avg= 0.14

DTTO FLOOR

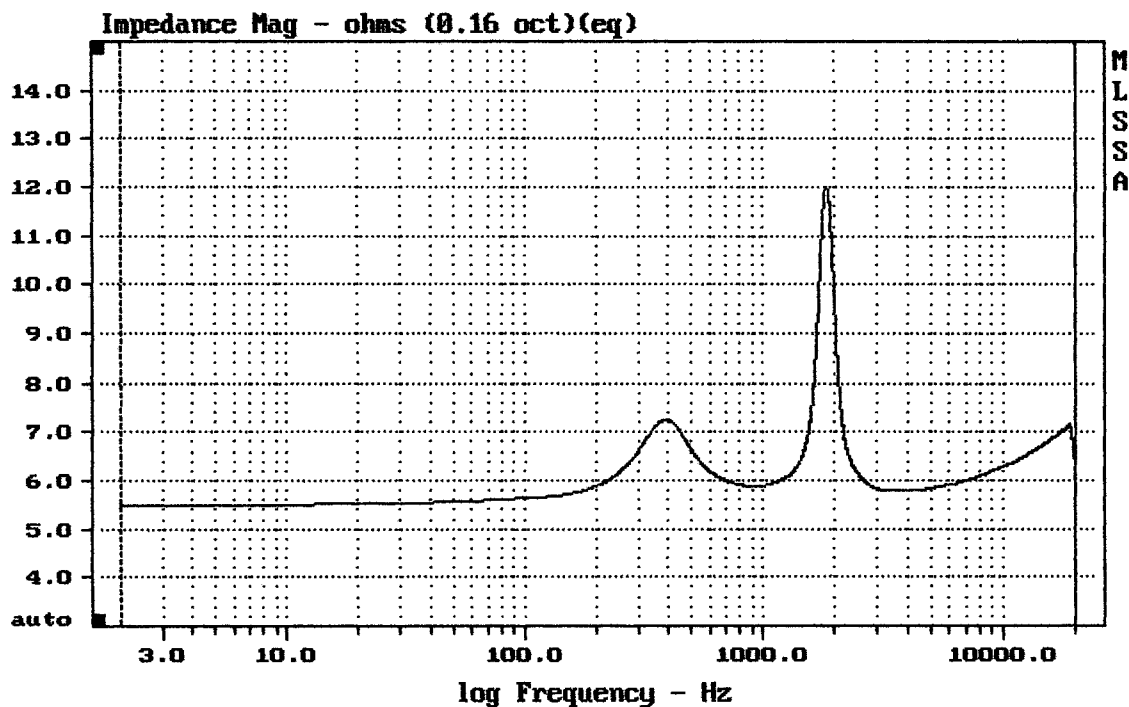
MLSSA: Frequency Domain



mean: 318.3, rms: 385.3, std: 217.1, max: 1129, min: 35.42

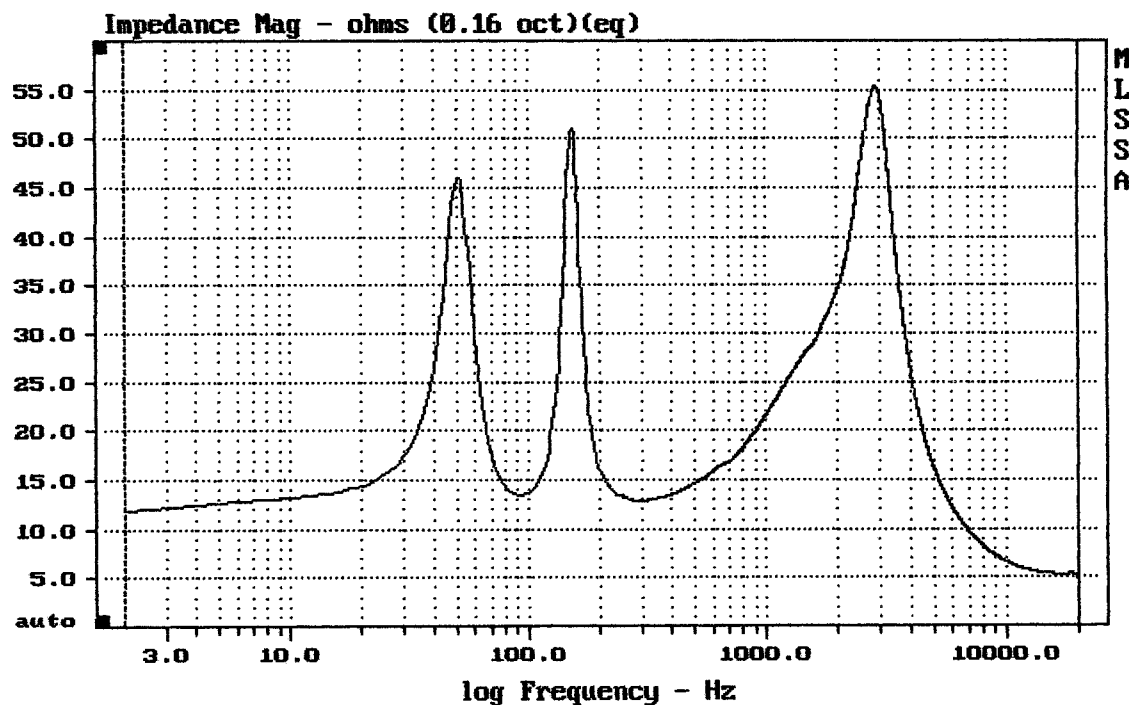
MQ50

MLSSA: Frequency Domain



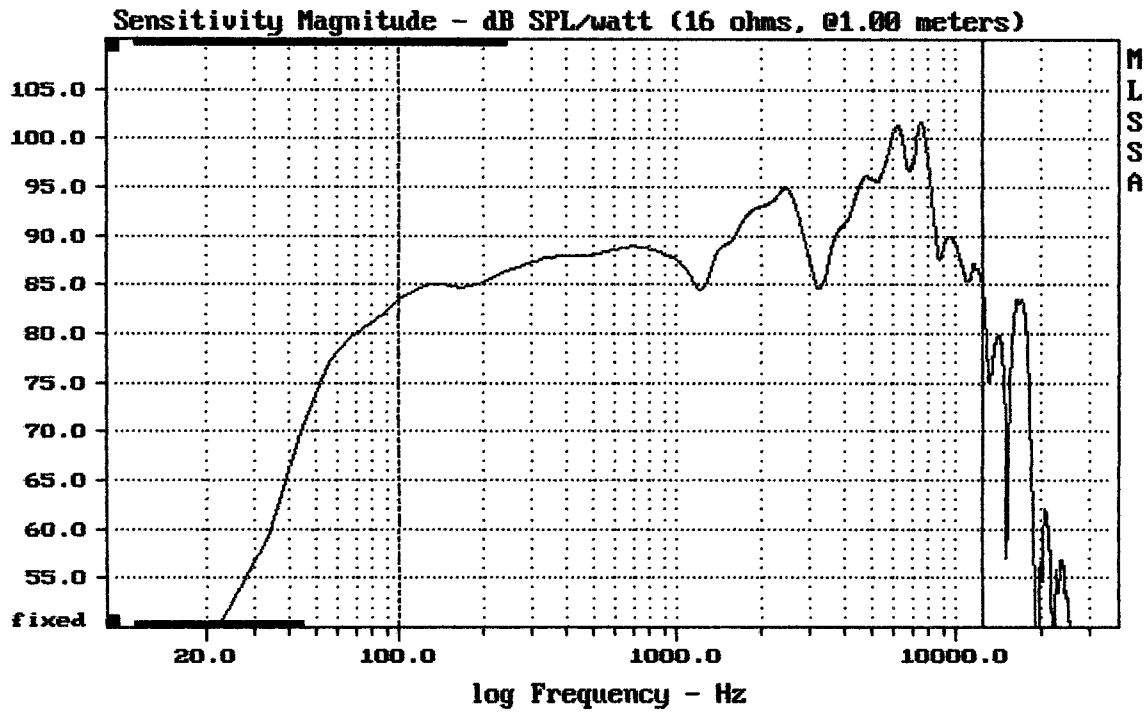
MQ50 TWEETER

MLSSA: Frequency Domain



MQ50

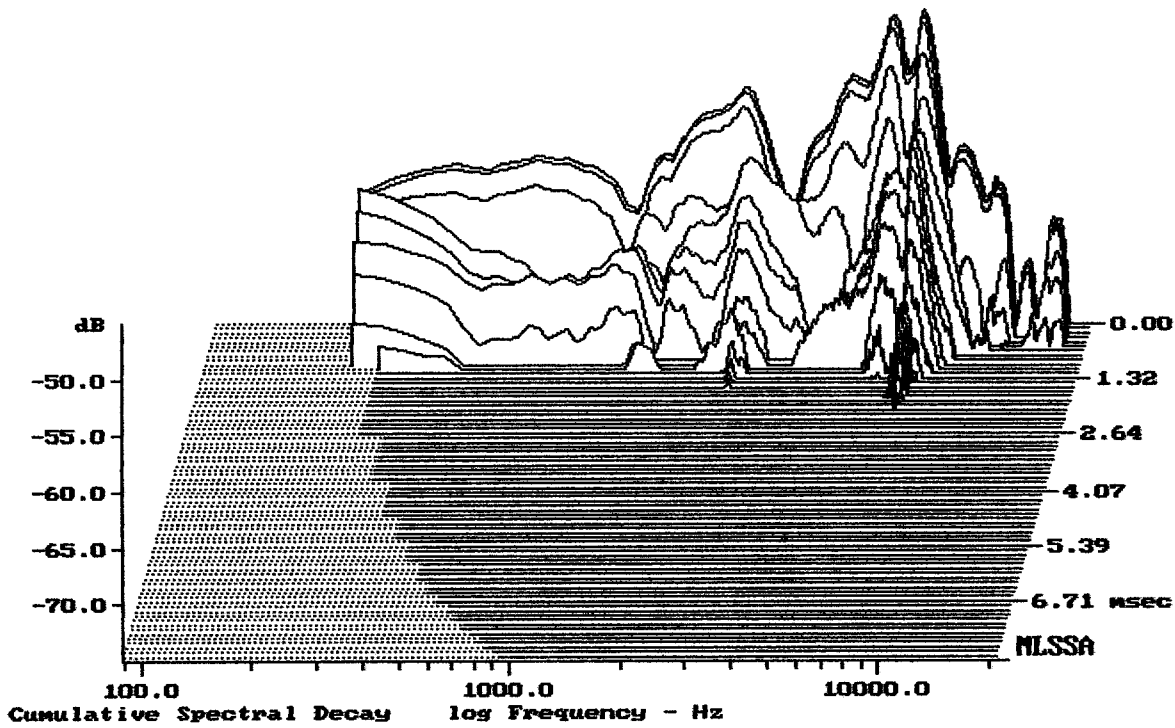
MLSSA: Frequency Domain



Level (100:12507 Hz) = 91.97 dB SPL/watt (16 ohms, @1.00 meters)

NQ50

MLSSA: Frequency Domain



-73.85 dB, 7102 Hz (160), 2.090 msec (20)

DTTO

Measured Data

QC Limits

Line	Parameter	Value	Units
1	RMSE-free	0.49	Ohms
2	Fs	83.20	Hz
3	Re	11.27	Ohms[dc]
4	Res	50.32	Ohms
5	Qms	3.11	
6	Qes	0.70	
7	Qts	0.57	
8	L1	0.66	mH
9	L2	0.73	mH
10	R2	1.75	Ohms
11	RMSE-load	0.27	Ohms
12	Vas(Sd)	5.70	liters
13	Mms	6.76	grams
14	Cms	542	μ M/Newton
15	Bl	7.56	Tesla-M
16	SPLref(Sd)	88.6	dB[Re]
17	Rub-index	0.00	

Method: Mass-loaded (10.00 grams)

Area (Sd): 86.59 sq cm

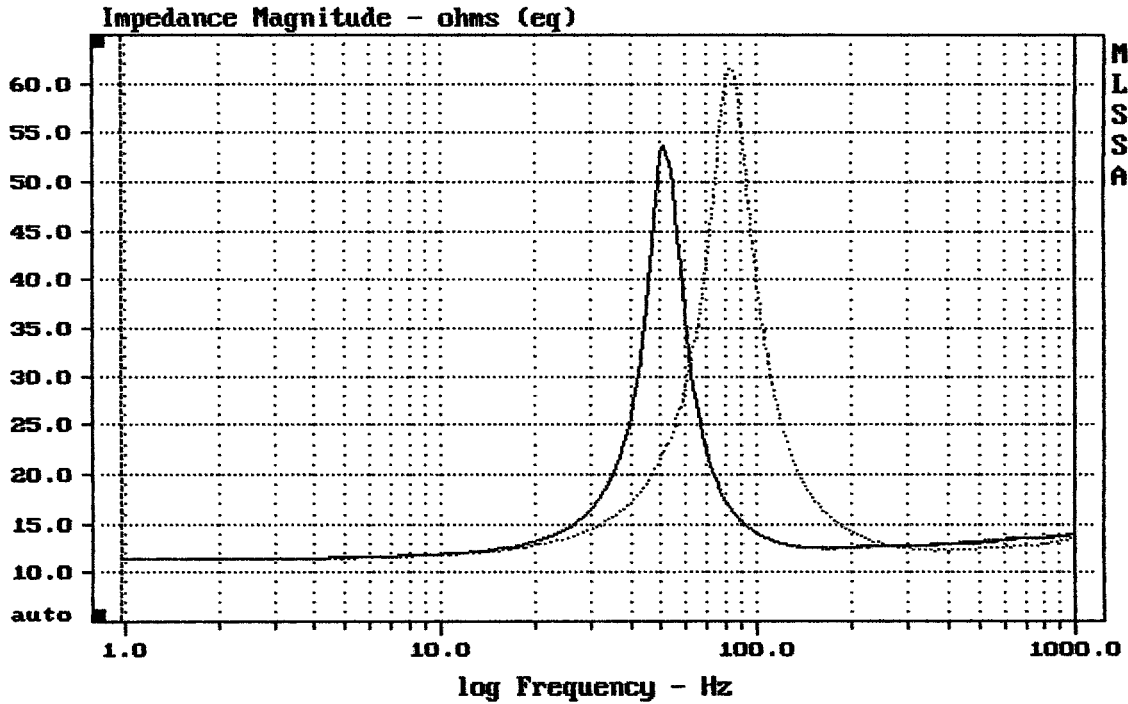
DCR mode: Measure (-0.11 ohms)

QC file: CLOSED

Analysis successful. Shift in Fs = -37.8% (-20% to -50% is recommended).

MQ50

MLSSA: Parameters



mean: 15.21, rms: 17.1, std: 7.828, max: 61.64, min: 11.39

DTTO

MLSSA: Frequency Domain