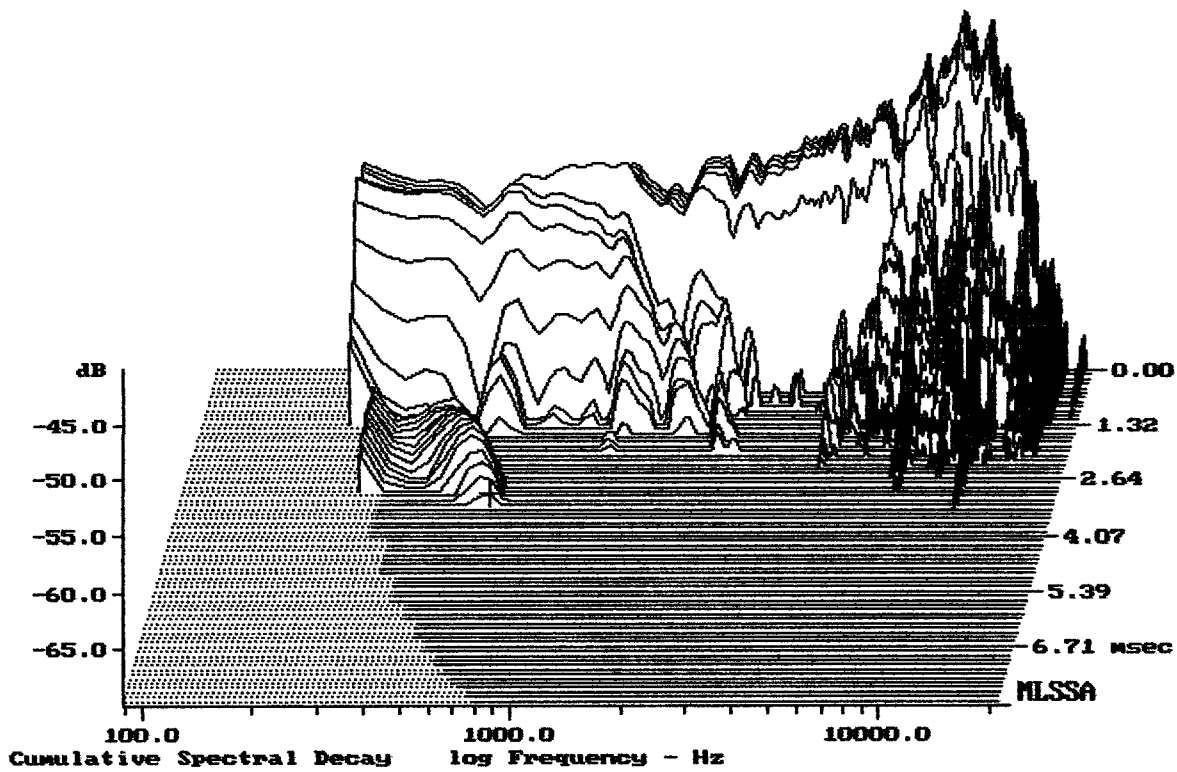


mean: 102.28, rms: 103.39, std: 3.74, max: 109.99, min: 80.60

HDL10-A

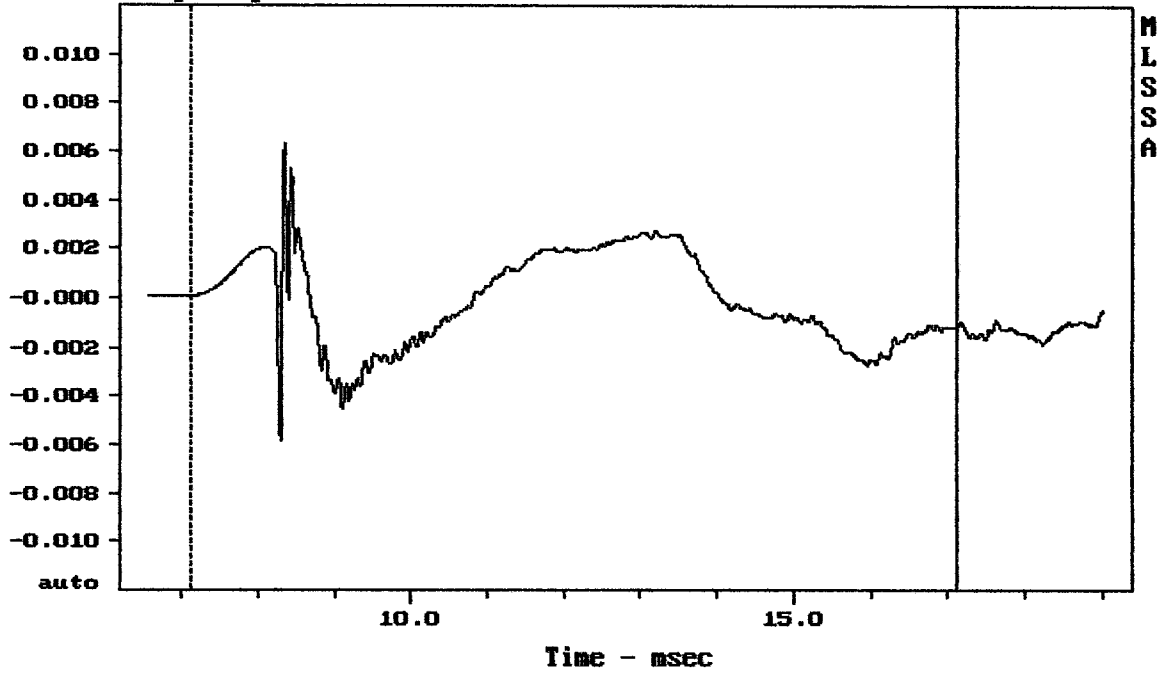
MLSSA: Frequency Domain



-69.02 dB, 621 Hz (14), 3.300 msec (31)

DTTO

Step Response - volts

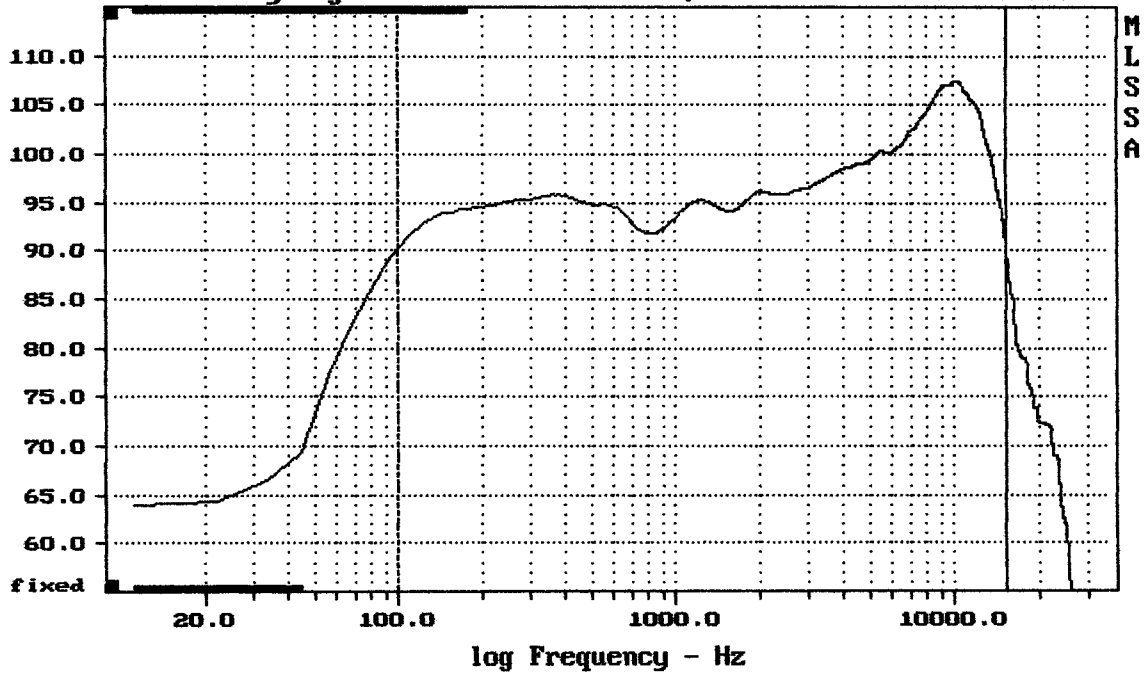


mean: -0.0001, rms: 0.001894, std: 0.001892, max: 0.006314, min: -0.005814

HDL10-A

MLSSA: Time Domain

Sensitivity Mag - dB SPL/watt (4 ohms, @1.80 meters) (0.33 oct)

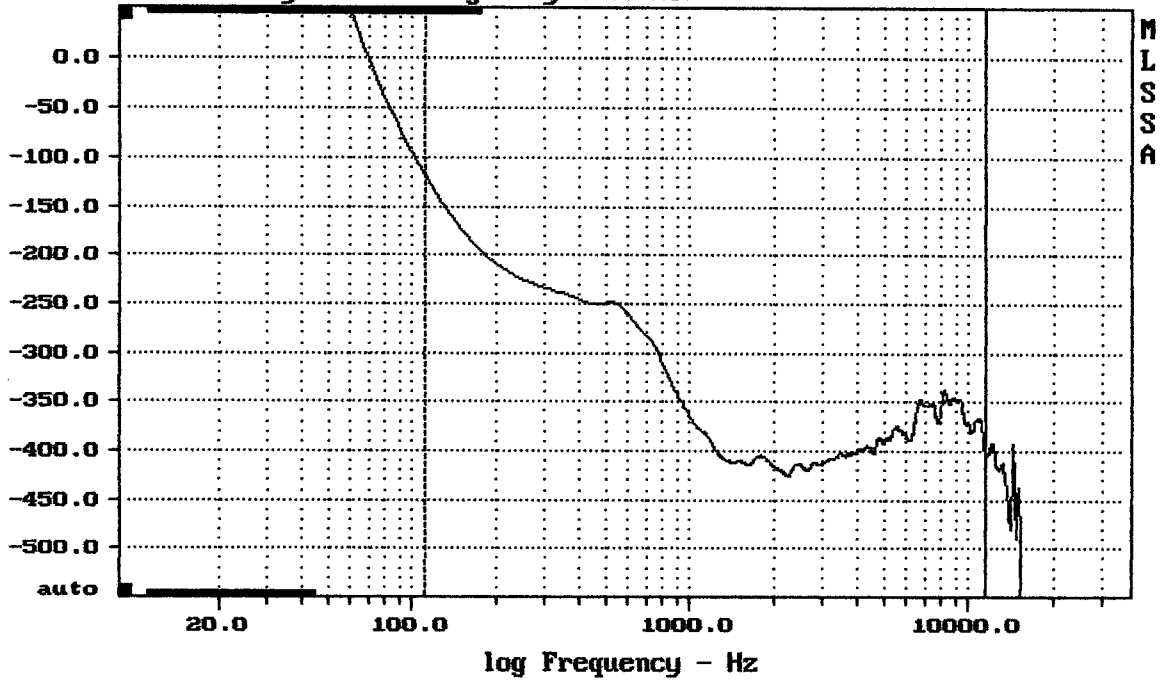


Level (100:15303 Hz) = 99.03 dB SPL/watt (4 ohms, @1.80 meters) (0.33 oct)

HDL10-A

MLSSA: Frequency Domain

Sensitivity Phase - deg (dly:1.19 ms)

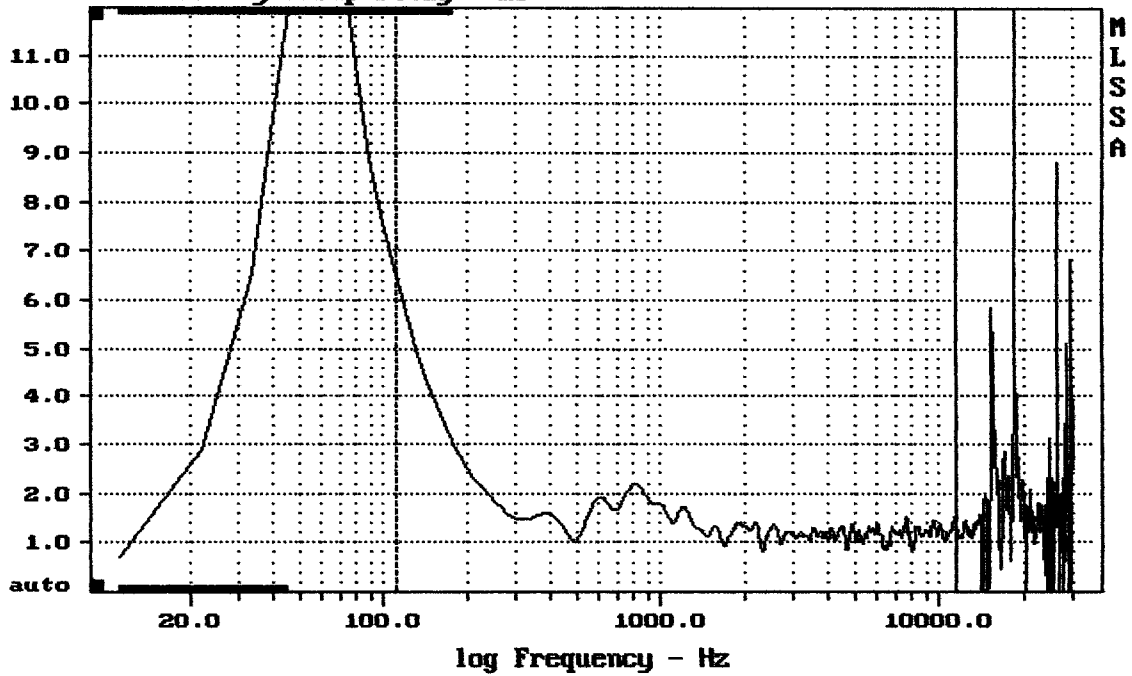


mean: -371.3, rms: 373.6, std: 41.16, max: -118.2, min: -426.2

HDL10-A

MLSSA: Frequency Domain

Sensitivity Group Delay - ms

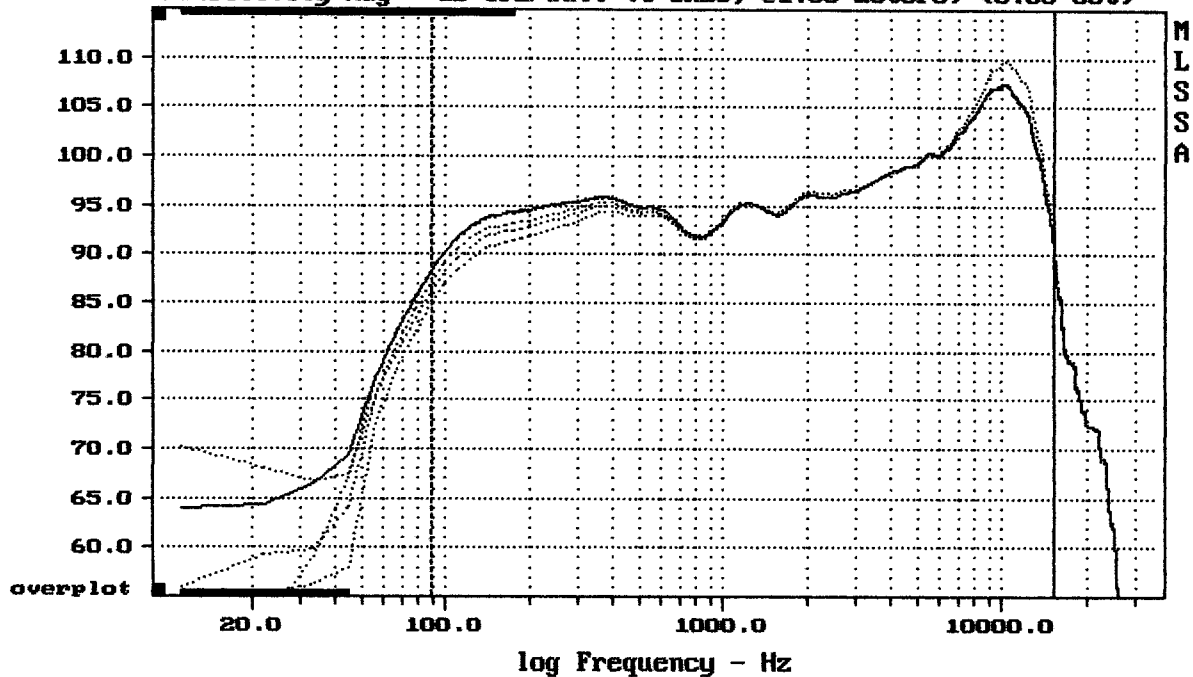


mean: 1.263, rms: 1.314, std: 0.362, max: 6.51, min: 0.8303

HDL10-A

MLSSA: Frequency Domain

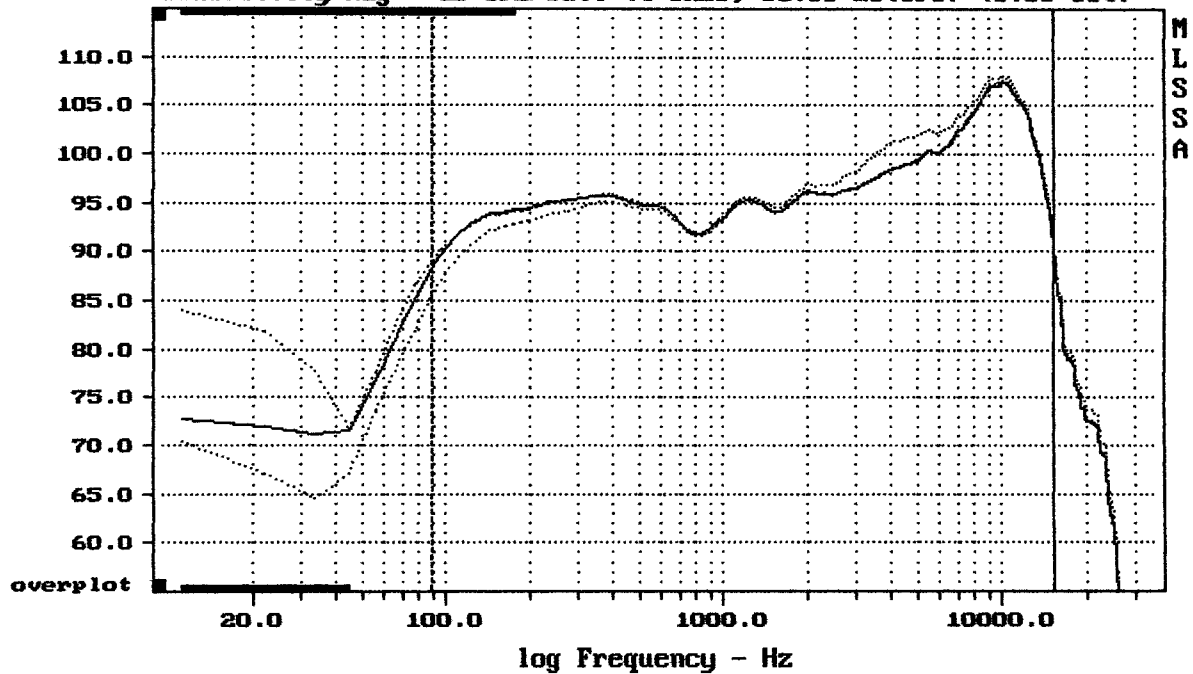
Sensitivity Mag - dB SPL/watt (4 ohms, @1.00 meters) (0.33 oct)



HDL10-A

MLSSA: Frequency Domain

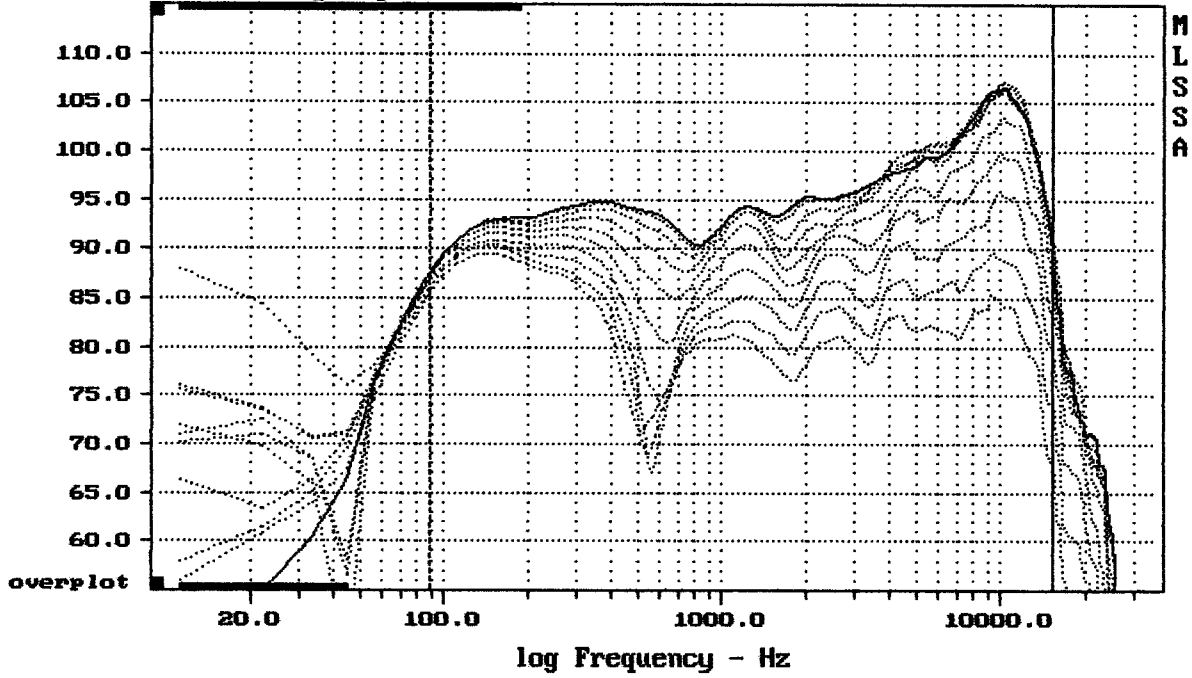
Sensitivity Mag - dB SPL/watt (4 ohms, @1.00 meters) (0.33 oct)



HDL10-A

MLSSA: Frequency Domain

Sensitivity Mag - dB SPL/watt (4 ohms, 01.00 meters) (0.33 oct)

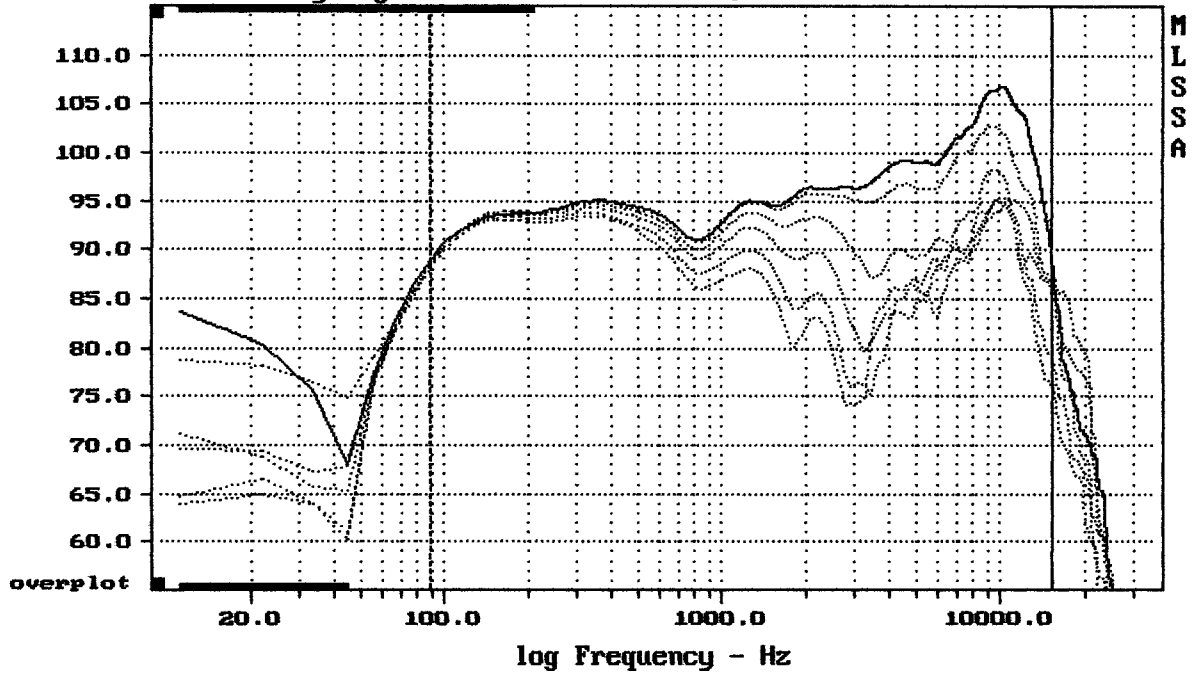


Overlay Compare: dev= +17/-5.5, std= 3.8, avg= -19

HDL10-A

MLSSA: Frequency Domain

Sensitivity Mag - dB SPL/watt (4 ohms, 01.00 meters) (0.33 oct)

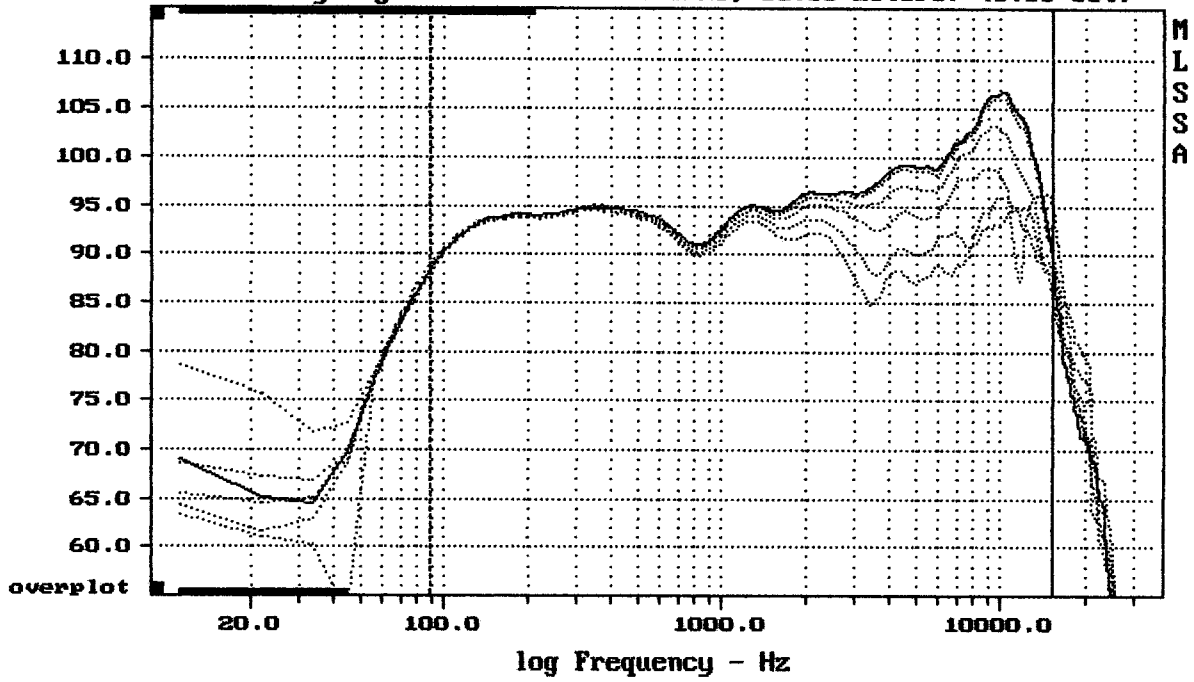


Overlay Compare: dev= +13/-8.7, std= 3.9, avg= -14

HDL10-A

MLSSA: Frequency Domain

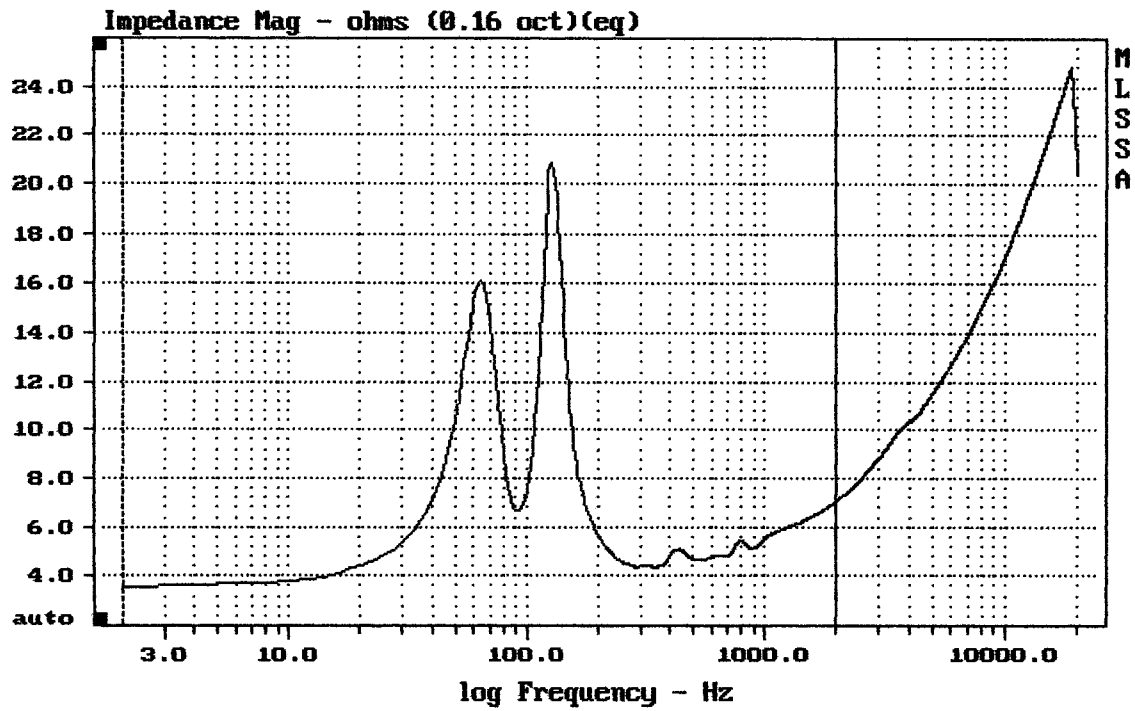
Sensitivity Mag - dB SPL/watt (4 ohms, @1.80 meters) (0.33 oct)



Overlay Compare: dev= +8.9/-4.3, std= 3.7, avg= -8.8

DTTO SDEG.

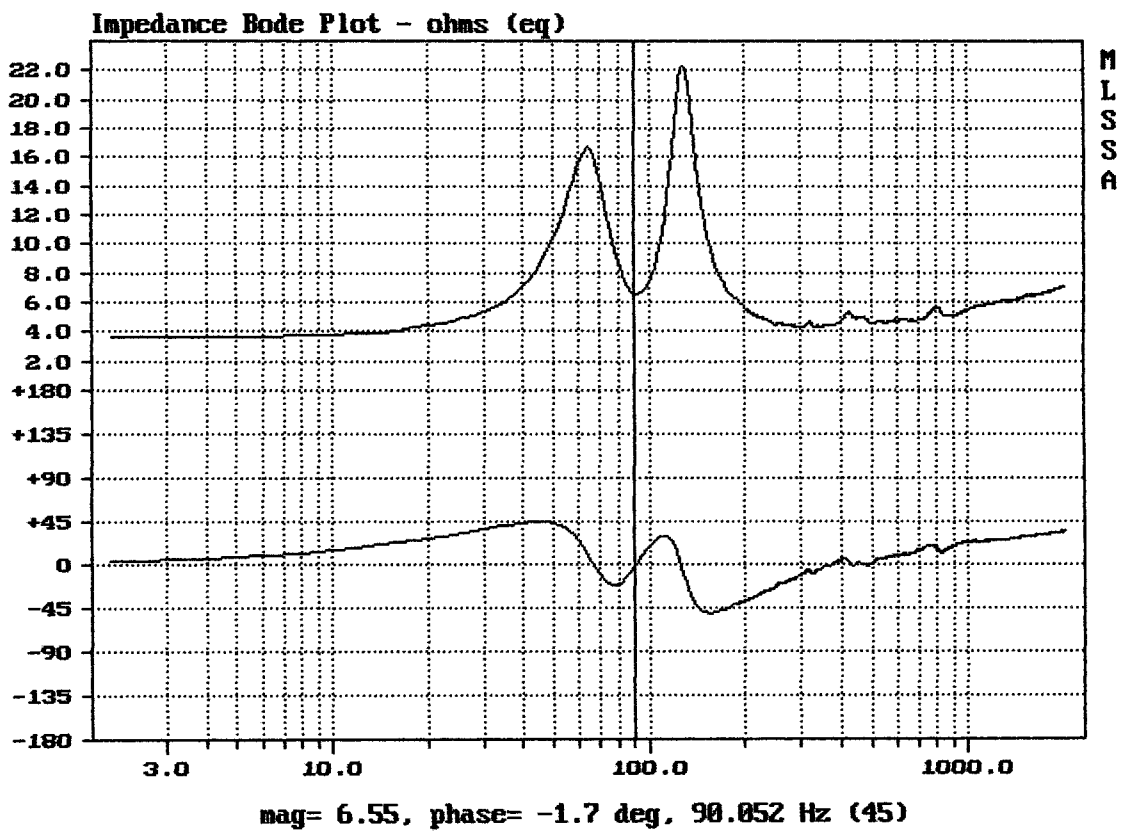
MLSSA: Frequency Domain



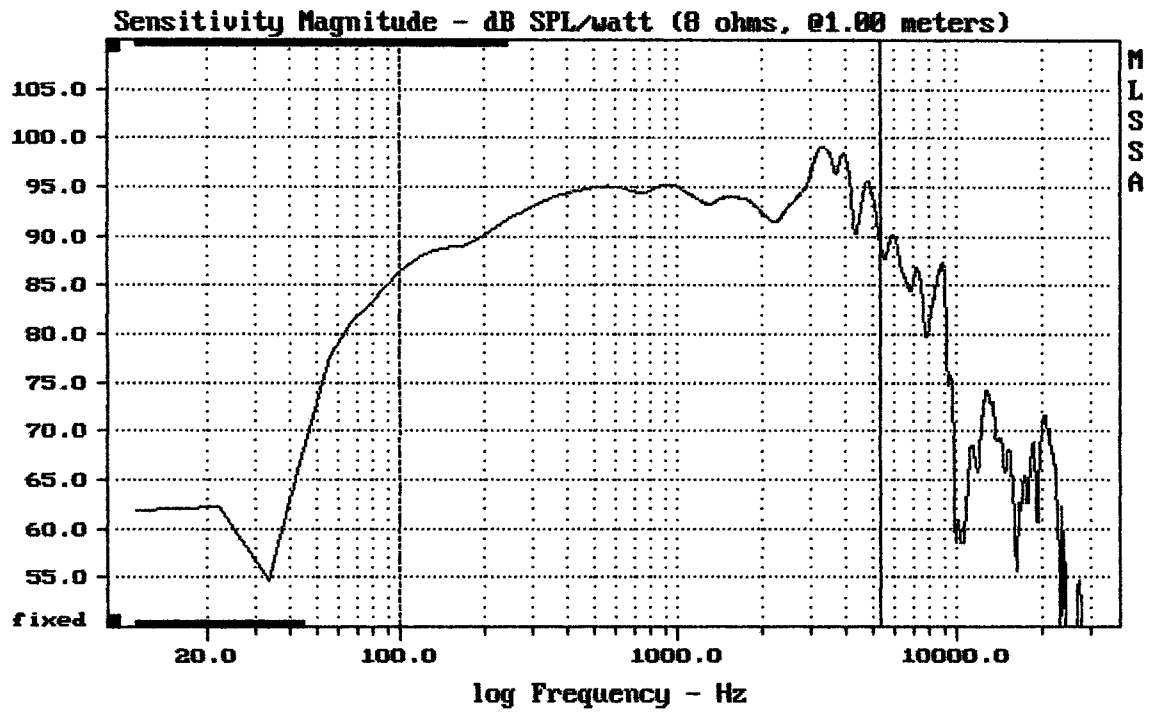
mean: 6.099, rms: 6.448, std: 2.091, max: 20.85, min: 3.595

HDL10-A

MLSSA: Frequency Domain



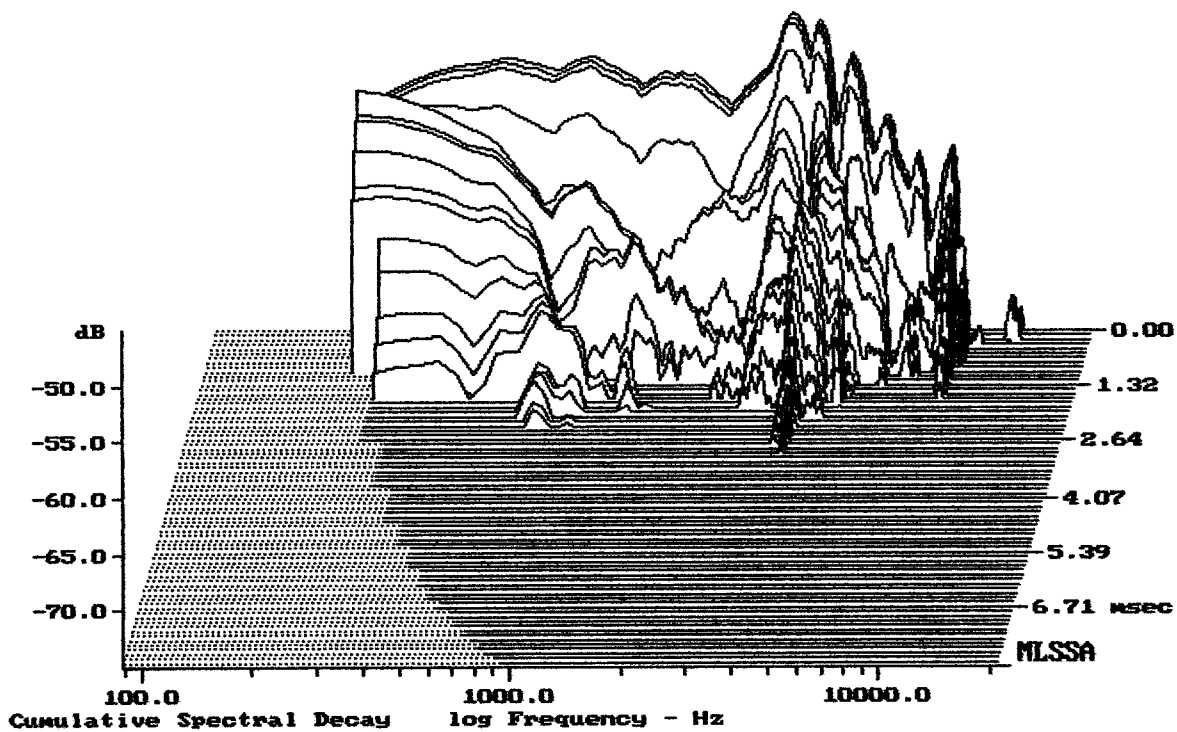
DTTN



Level (100:5305 Hz) = 93.84 dB SPL/watt (8 ohms, @1.00 meters)

HDL10-A

MLSSA: Frequency Domain



-73.83 dB, 3729 Hz (84), 2.860 msec (27)

DTTO

Measured Data

QC Limits

Line	Parameter	Value	Units
1	RMSE-free	0.60	Ohms
2	Fs	90.18	Hz
3	Re	5.60	Ohms[dc]
4	Res	63.62	Ohms
5	Qms	4.07	
6	Qes	0.36	
7	Qts	0.33	
8	L1	0.48	mH
9	L2	1.09	mH
10	R2	5.37	Ohms
11	RMSE-load	1.10	Ohms
12	Vas(Sd)	7.67	liters
13	Mms	29.37	grams
14	Cms	106	μ M/Newton
15	B1	16.14	Tesla-M
16	SPLref(Sd)	93.8	dB[Re]
17	Rub-index	0.00	

Method: Mass-loaded (40.00 grams)

Area (Sd): 226.98 sq cm

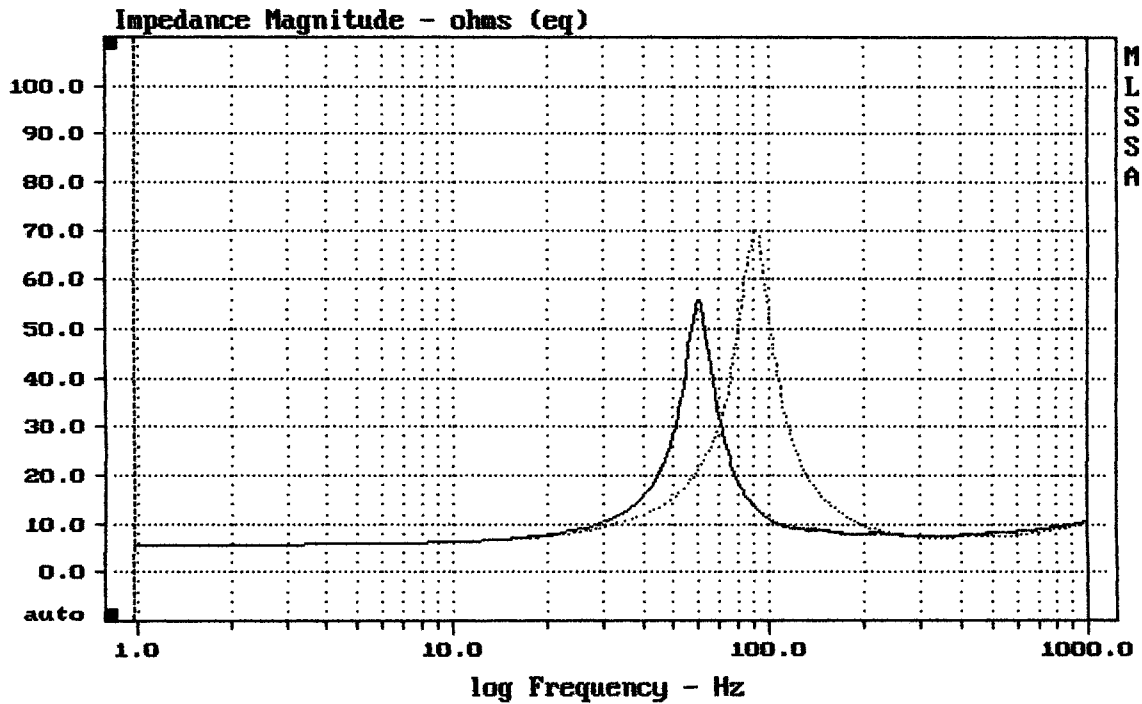
DCR mode: Measure (-0.11 ohms)

QC file: CLOSED

Analysis successful. Shift in Fs = -34.0% (-20% to -50% is recommended).

HDL10-A

MLSSA: Parameters



mean: 11.08, rms: 14.54, std: 9.426, max: 69.65, min: 5.731

DTTO

MLSSA: Frequency Domain