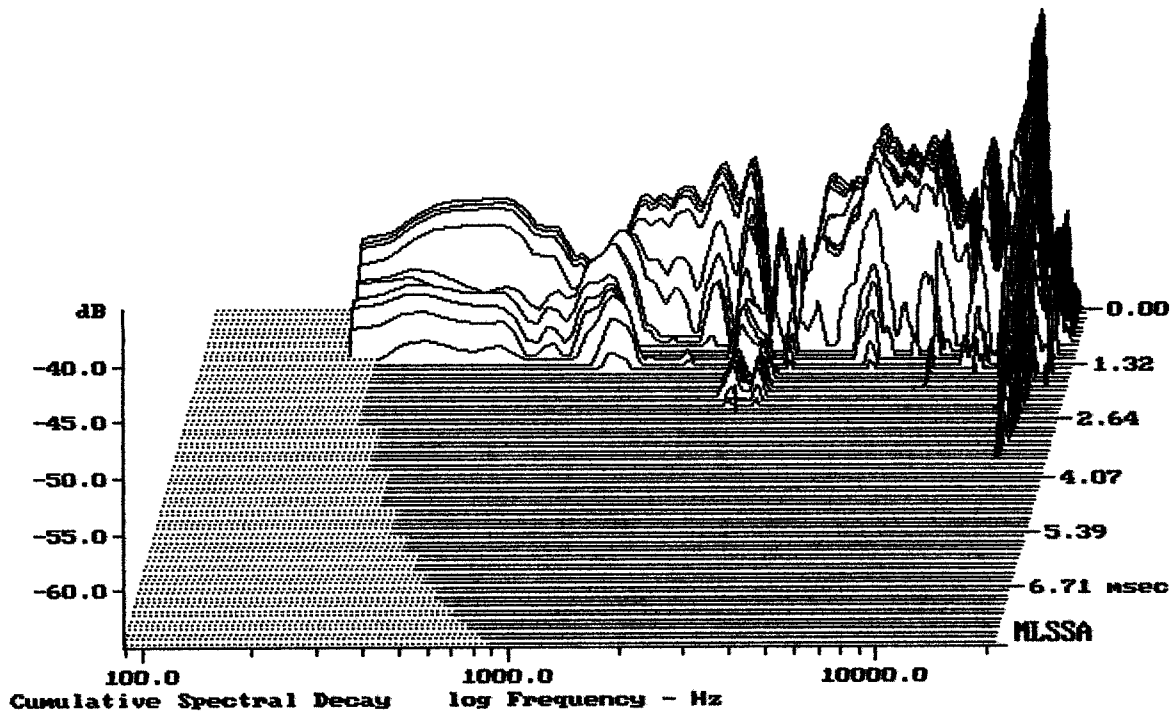


Level (78:18810 Hz) = 96.74 dB SPL/watt (8 ohms, @1.50 meters)

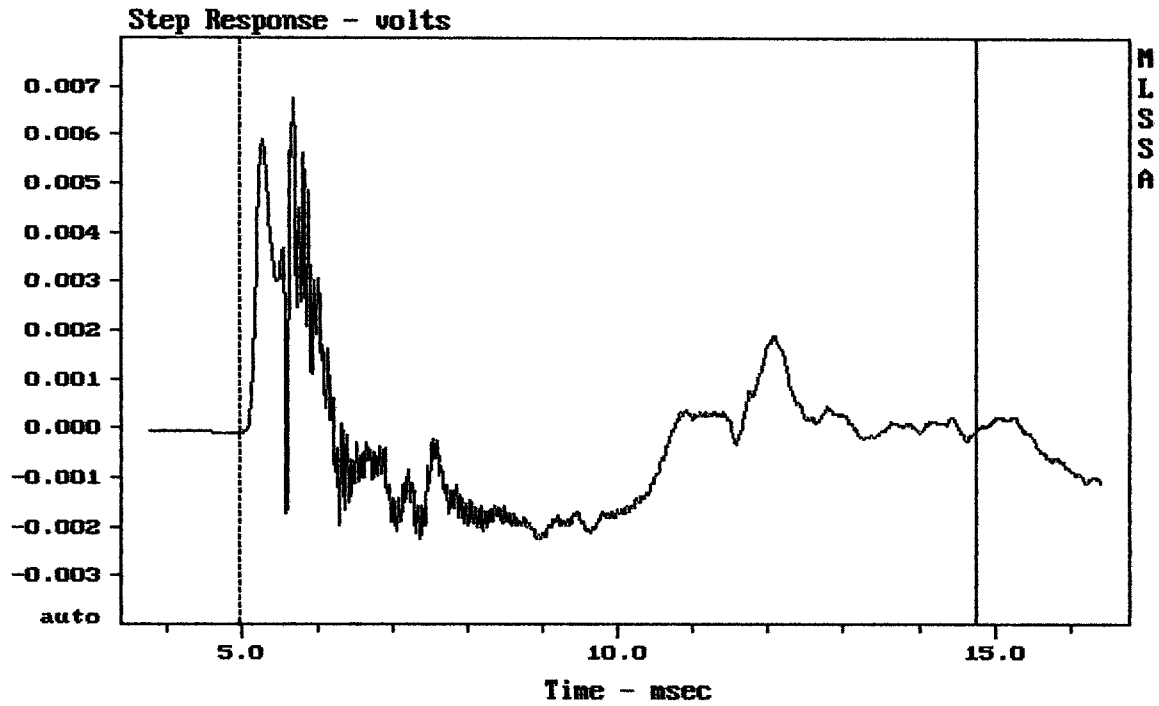
ARX112

MLSSA: Frequency Domain



-64.78 dB, 2700 Hz (61), 2.200 msec (21)

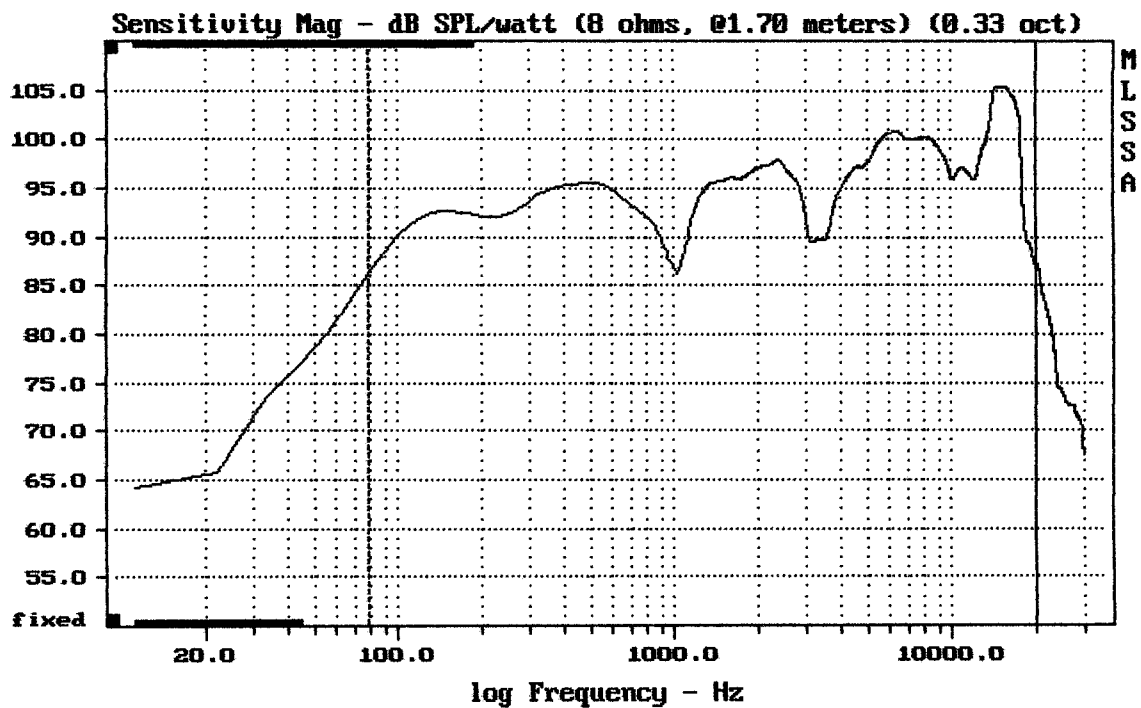
DTTO



mean: -0.0002179, rms: 0.001645, std: 0.00163, max: 0.00677, min: -0.002261

ARX112

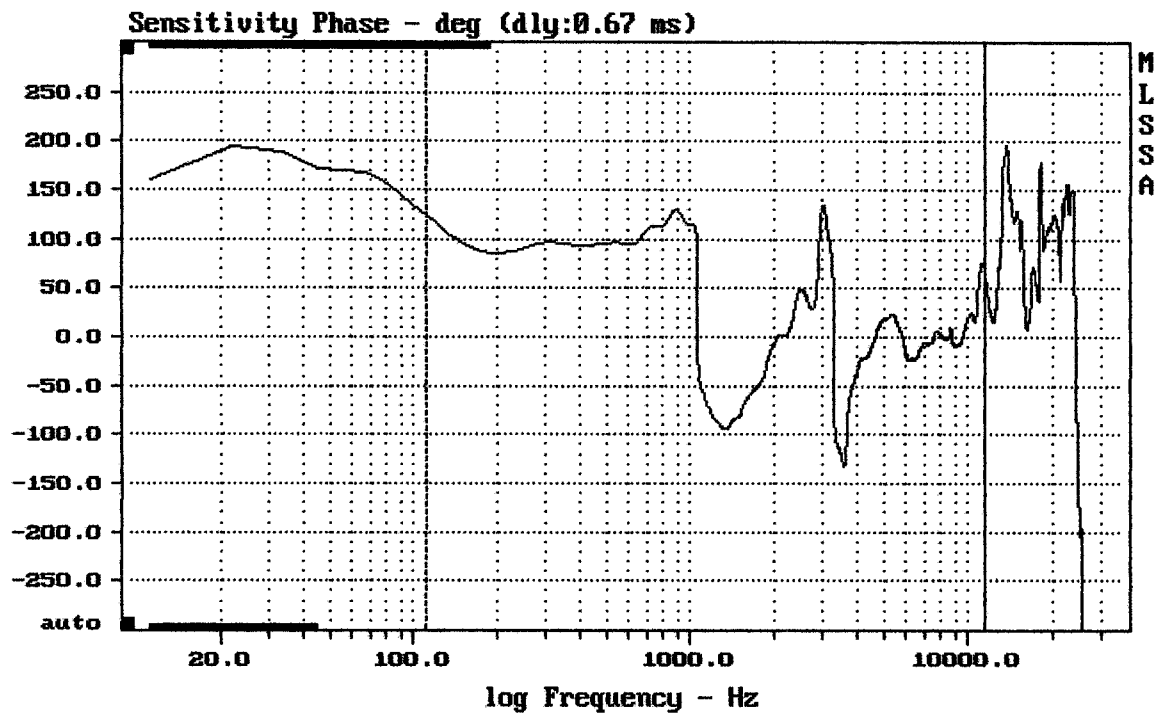
MLSSA: Time Domain



mean: 99.05, rms: 100.08, std: 3.61, max: 105.40, min: 86.19

ARX112

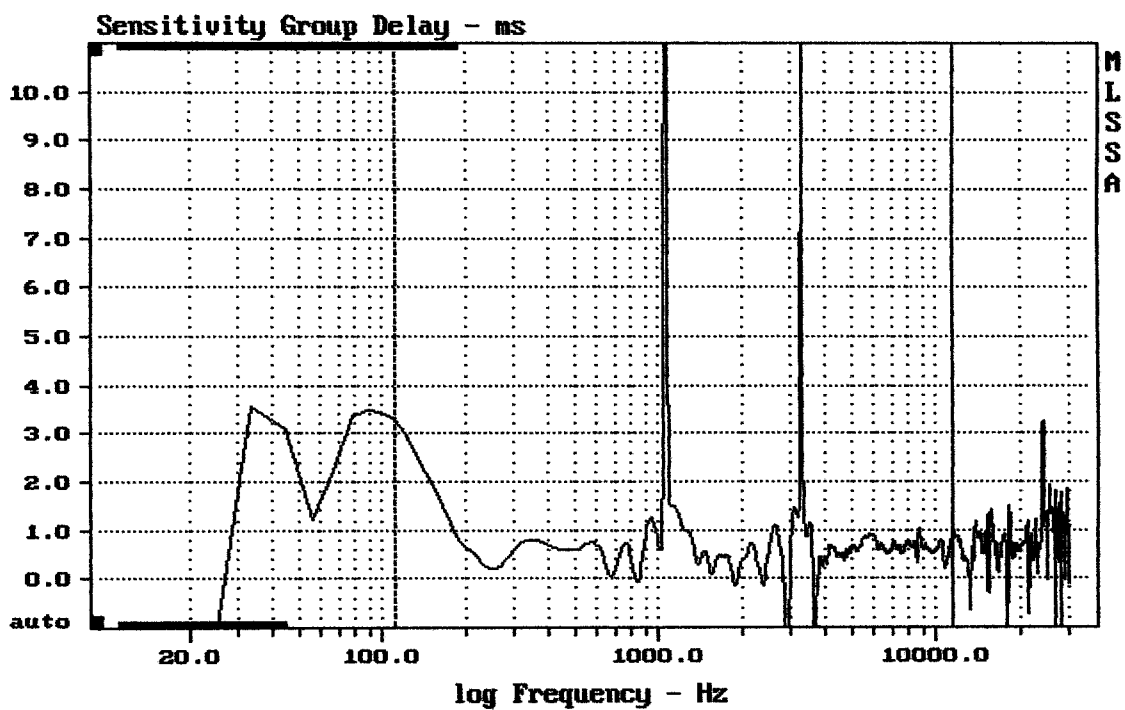
MLSSA: Frequency Domain



mean: 7.714, rms: 52.21, std: 51.64, max: 135, min: -132.3

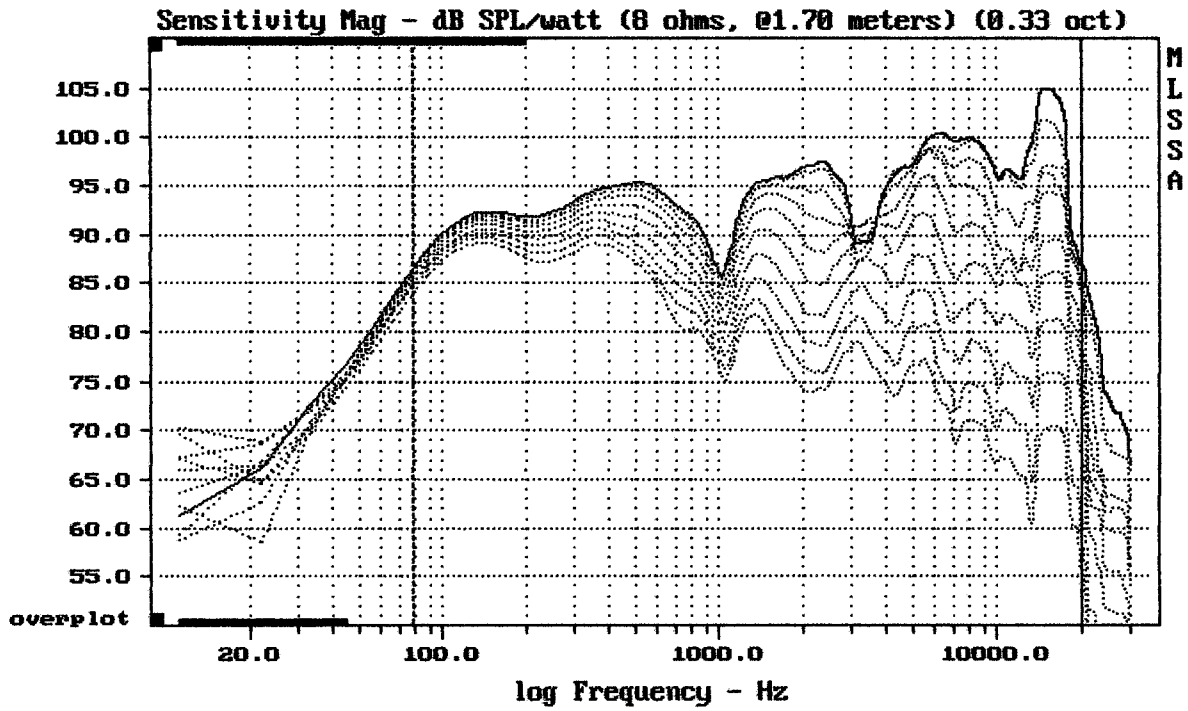
ARX112

MLSSA: Frequency Domain



mean: 0.6854, rms: 1.274, std: 1.074, max: 18.71, min: -1.914

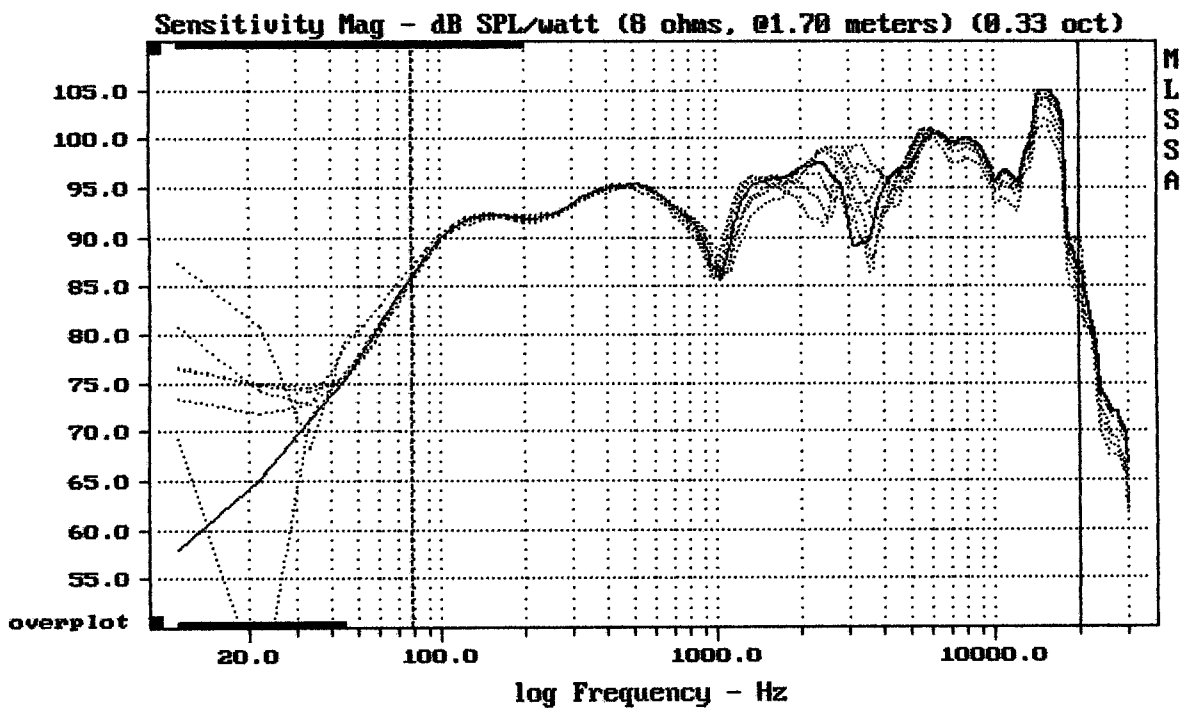
MLSSA: Frequency Domain



Overlay Compare: dev= +25/-11, std= 7.6, avg= -27

ARX112

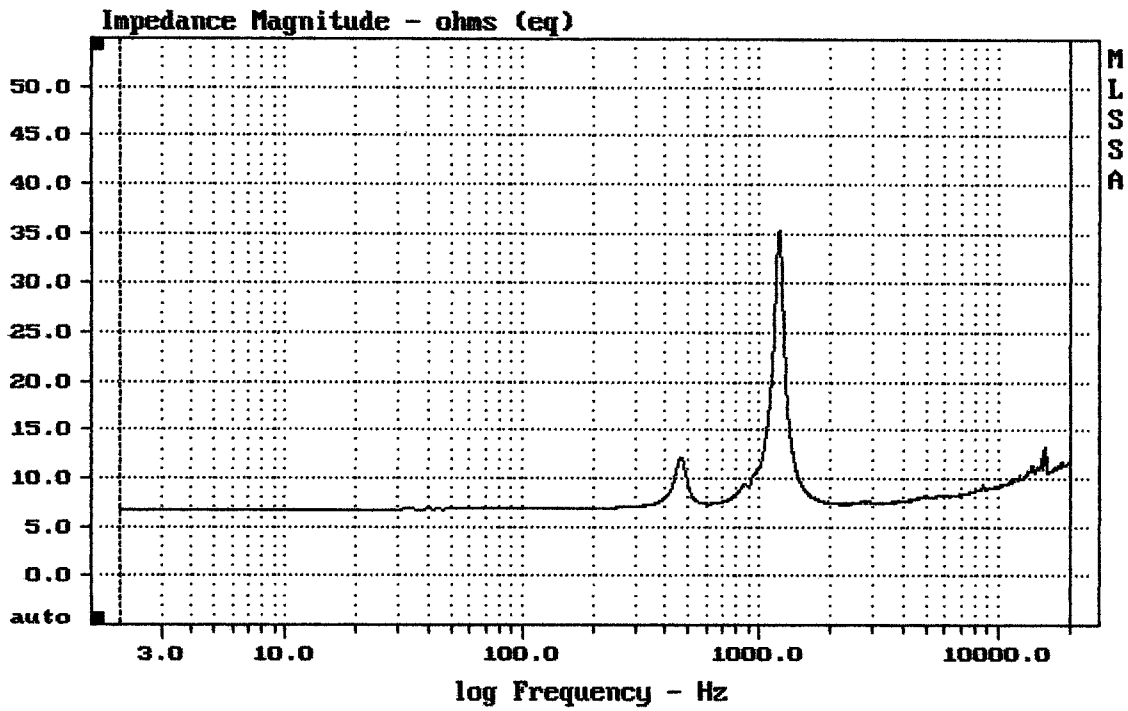
MLSSA: Frequency Domain



mean: 96.73, rms: 97.28, std: 2.72, max: 101.25, min: 86.62

ARX112

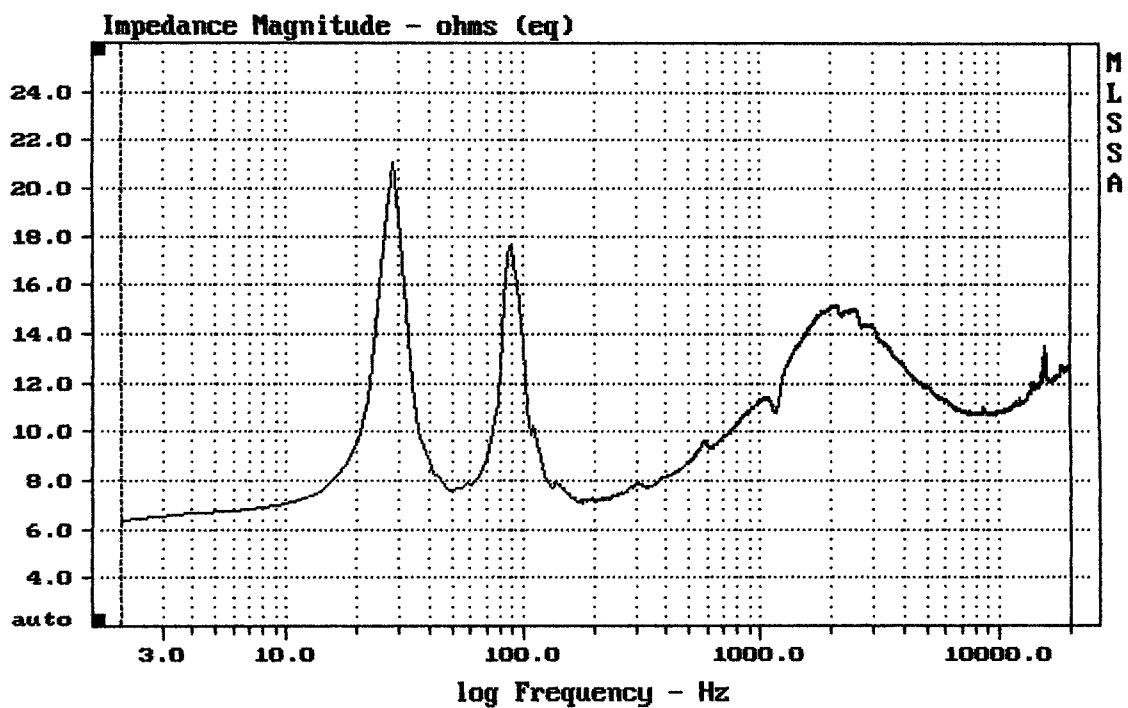
MLSSA: Frequency Domain



mean: 9.744, rms: 10.03, std: 2.387, max: 35.27, min: 6.648

ARX112 + HORN

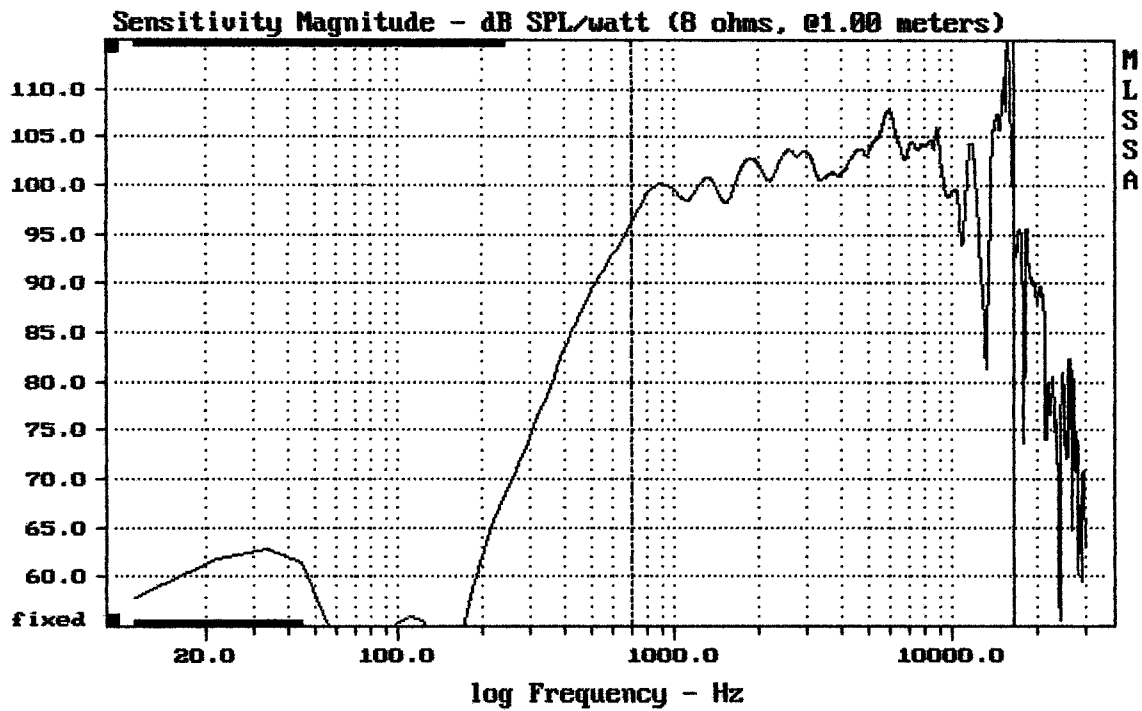
MLSSA: Frequency Domain



mean: 11.85, rms: 11.92, std: 1.295, max: 21.09, min: 6.334

ARX112

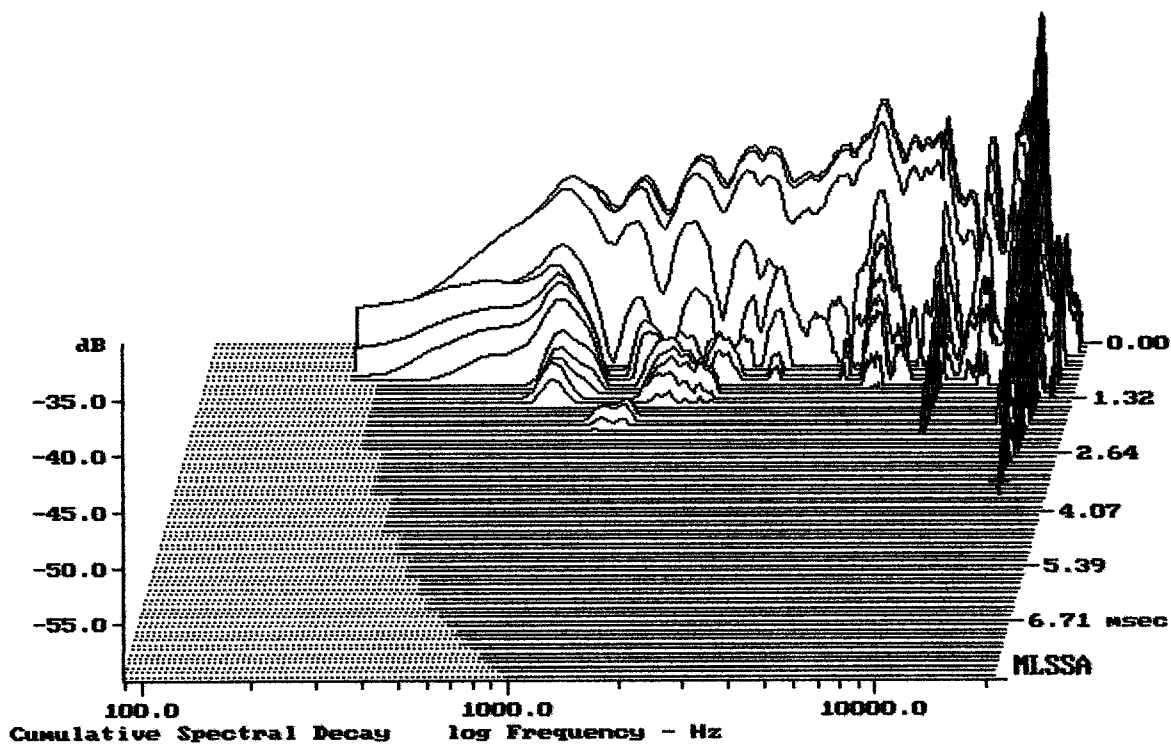
MLSSA: Frequency Domain



Level (699:16602 Hz) = 103.04 dB SPL/watt (8 ohms, @1.00 meters)

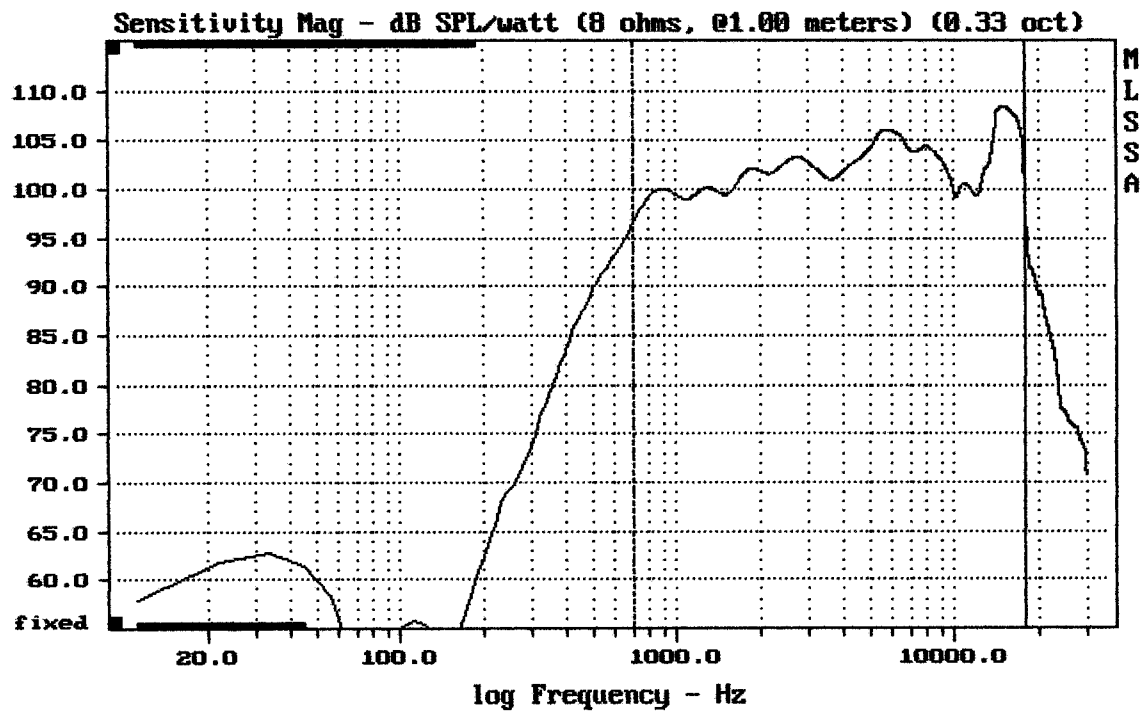
ARX112 + HORN

MLSSA: Frequency Domain



-59.37 dB, 15447 Hz (348), 3.520 msec (33)

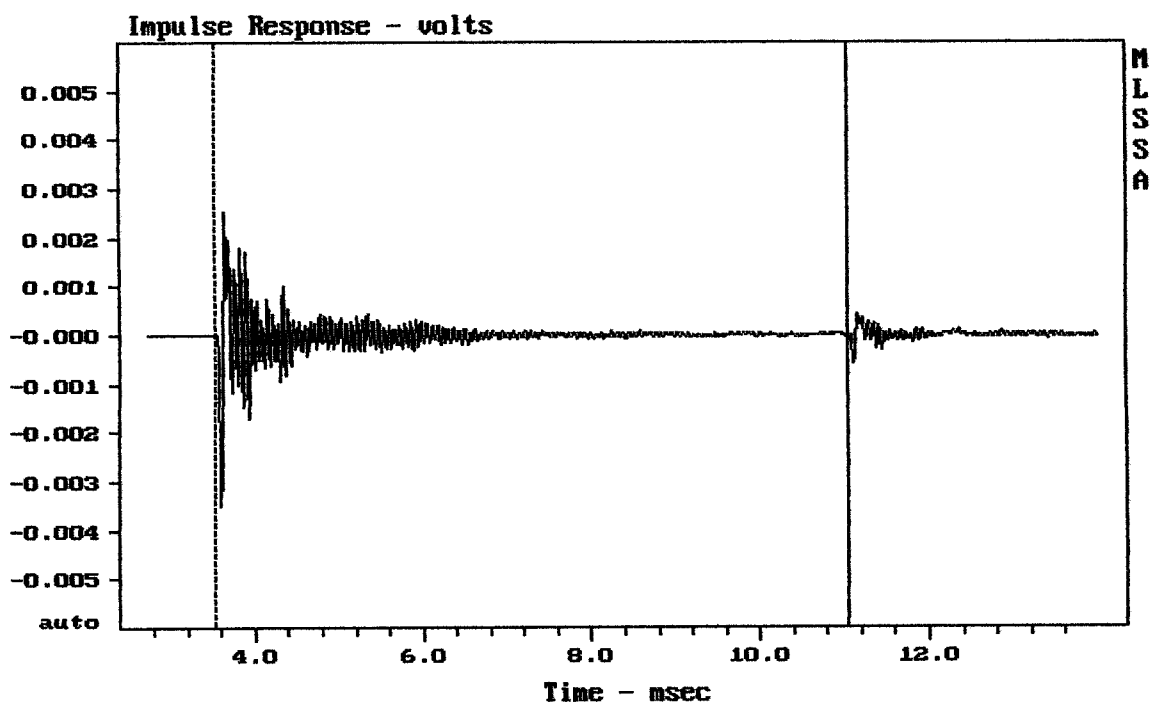
DTIO



mean: 103.94, rms: 104.40, std: 2.50, max: 108.35, min: 96.50

ARX112 + HORN

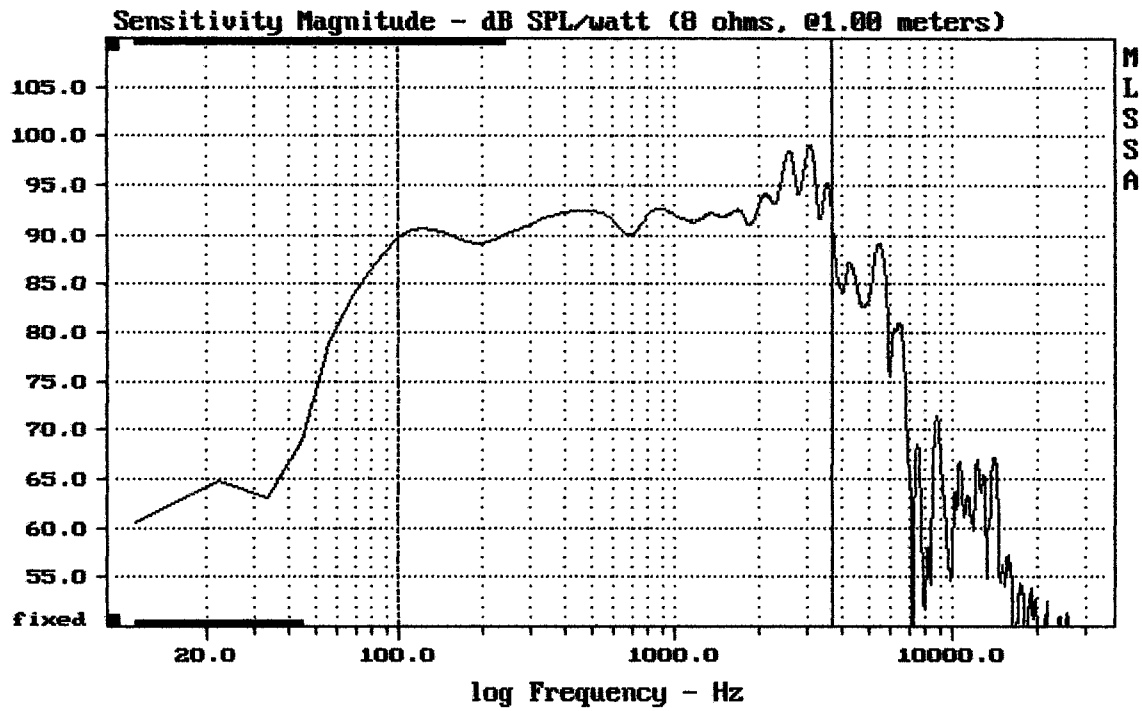
MLSSA: Frequency Domain



mean: 2.639e-007, rms: 0.0003713, std: 0.0003713, max: 0.002515, min: -0.003497

ARX112 + HORN

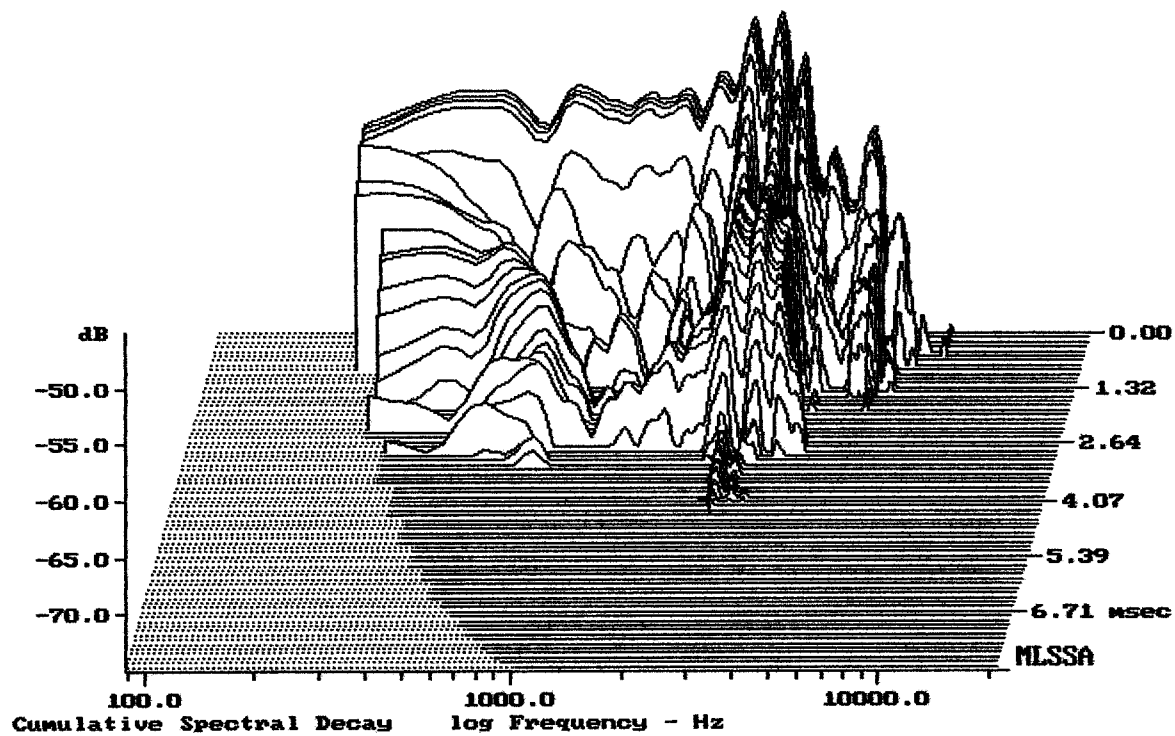
MLSSA: Time Domain



Level (100:3706 Hz) = 92.42 dB SPL/watt (8 ohms, @1.00 meters)

ARX112

MLSSA: Frequency Domain



-74.45 dB, 2619 Hz (59), 4.188 msec (39)

DTTO

Measured Data

QC Limits

Line	Parameter	Value	Units
1	RMSE-free	0.20	Ohms
2	Fs	47.82	Hz
3	Re	6.02	Ohms[dc]
4	Res	33.09	Ohms
5	Qms	4.94	
6	Qes	0.90	
7	Qts	0.76	
8	L1	0.64	mH
9	L2	0.90	mH
10	R2	3.91	Ohms
11	RMSE-load	0.14	Ohms
12	Vas(Sd)	86.47	liters
13	Mms	50.71	grams
14	Cms	218	$\mu\text{M}/\text{Newton}$
15	B1	10.10	Tesla-M
16	SPLref(Sd)	92.0	dB[Re]
17	Rub-index	0.00	

Method: Mass-loaded (80.00 grams)

Area (Sd): 530.93 sq cm

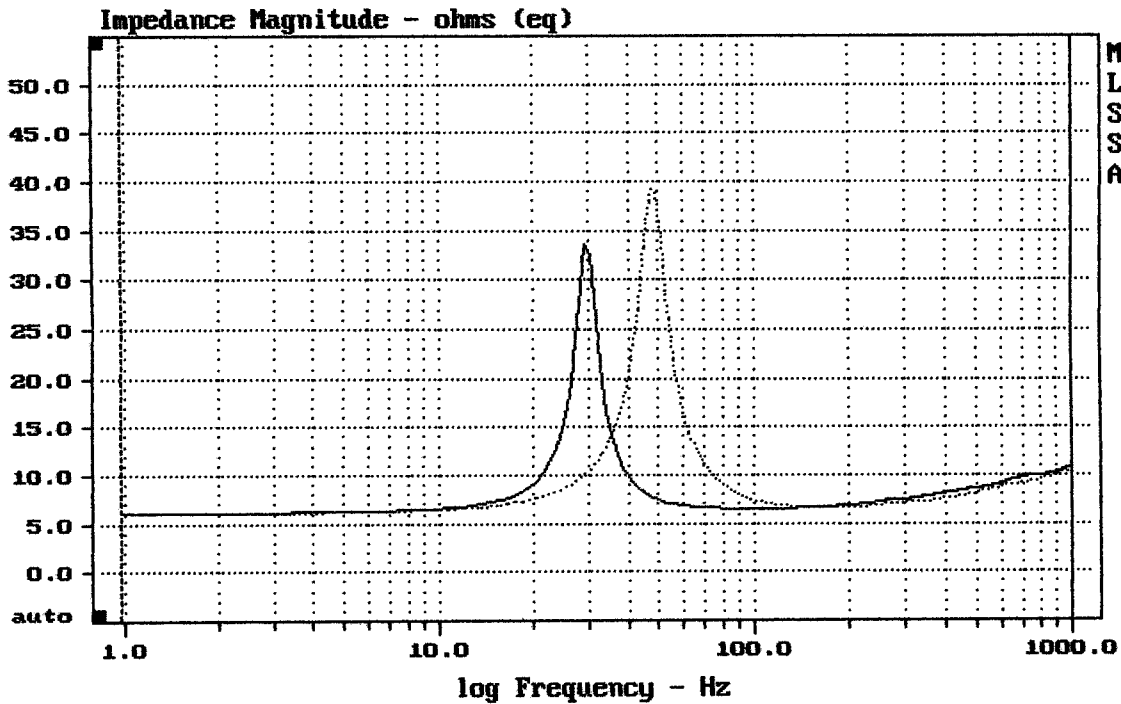
DCR mode: Measure (-0.11 ohms)

QC file: CLOSED

Analysis successful. Shift in Fs = -38.1% (-20% to -50% is recommended).

ARX112

MLSSA: Parameters



mean: 8.927, rms: 9.588, std: 3.273, max: 39.2, min: 6.132

DITO

MLSSA: Frequency Domain