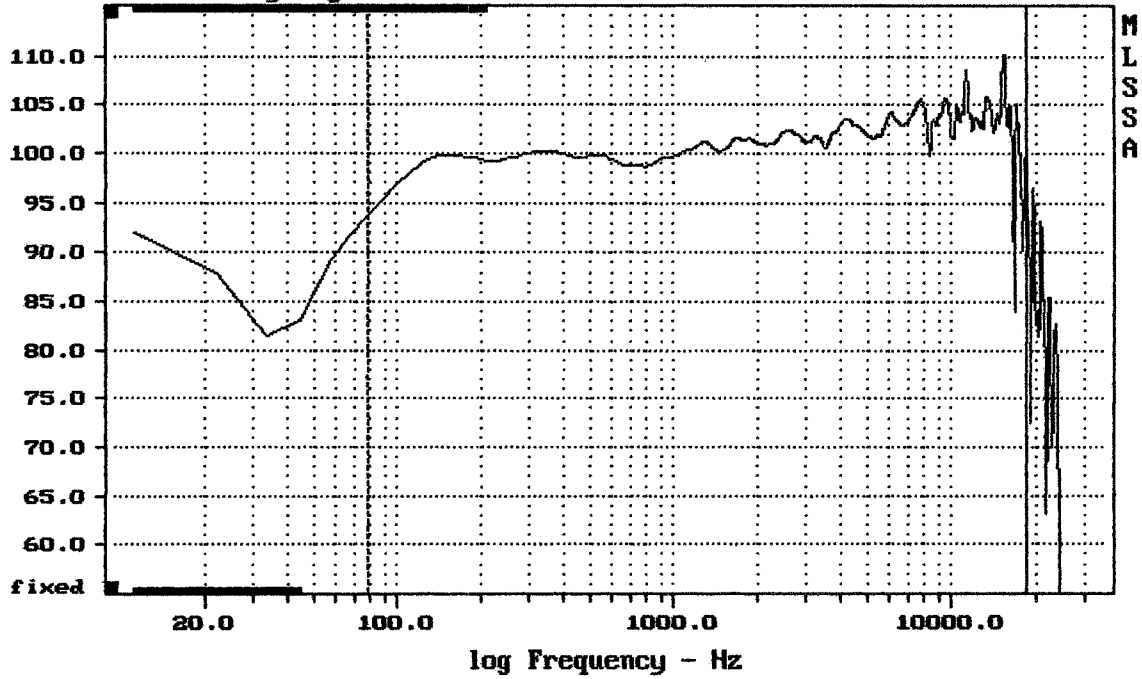


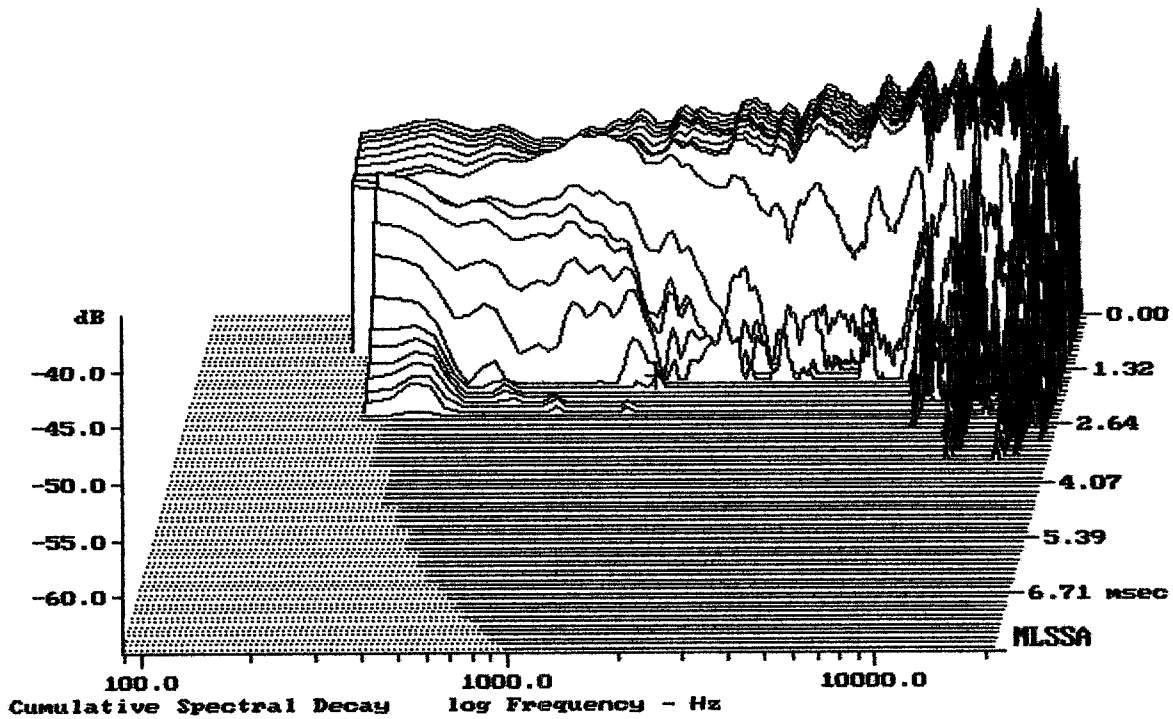
Sensitivity Magnitude - dB SPL/watt (4 ohms, @1.00 meters)



mean: 103.02, rms: 103.40, std: 2.30, max: 110.09, min: 83.96

ART745-A

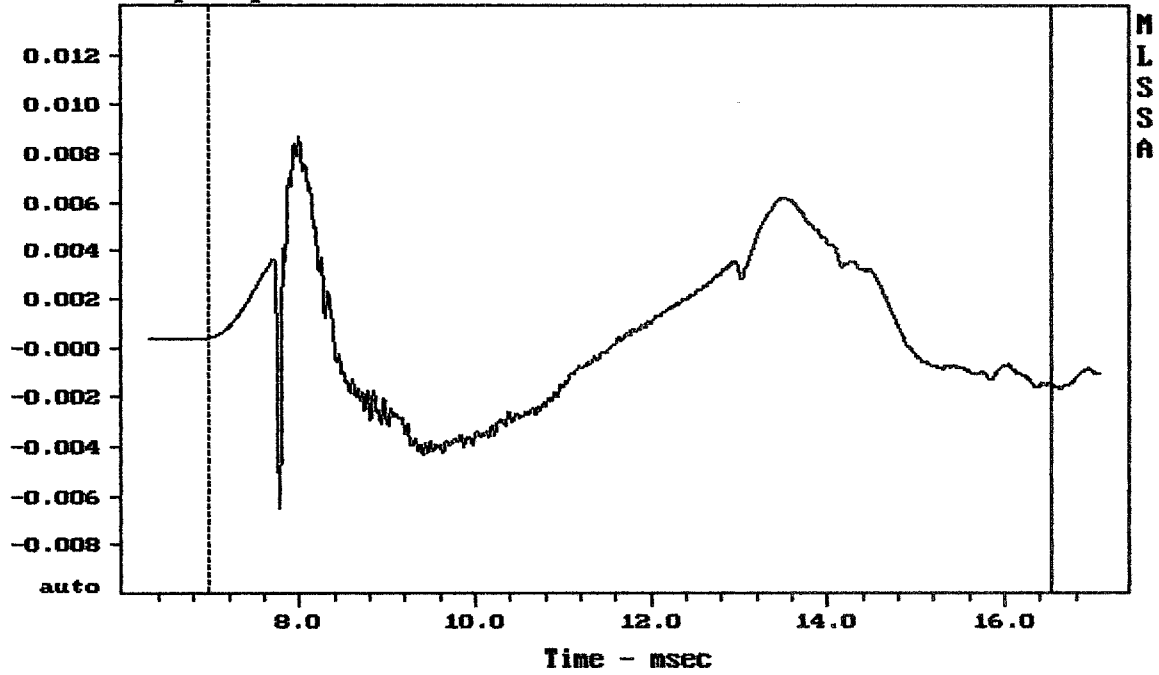
MLSSA: Frequency Domain



-63.85 dB, 1598 Hz (36), 1.760 msec (17)

DTTO

Step Response - volts

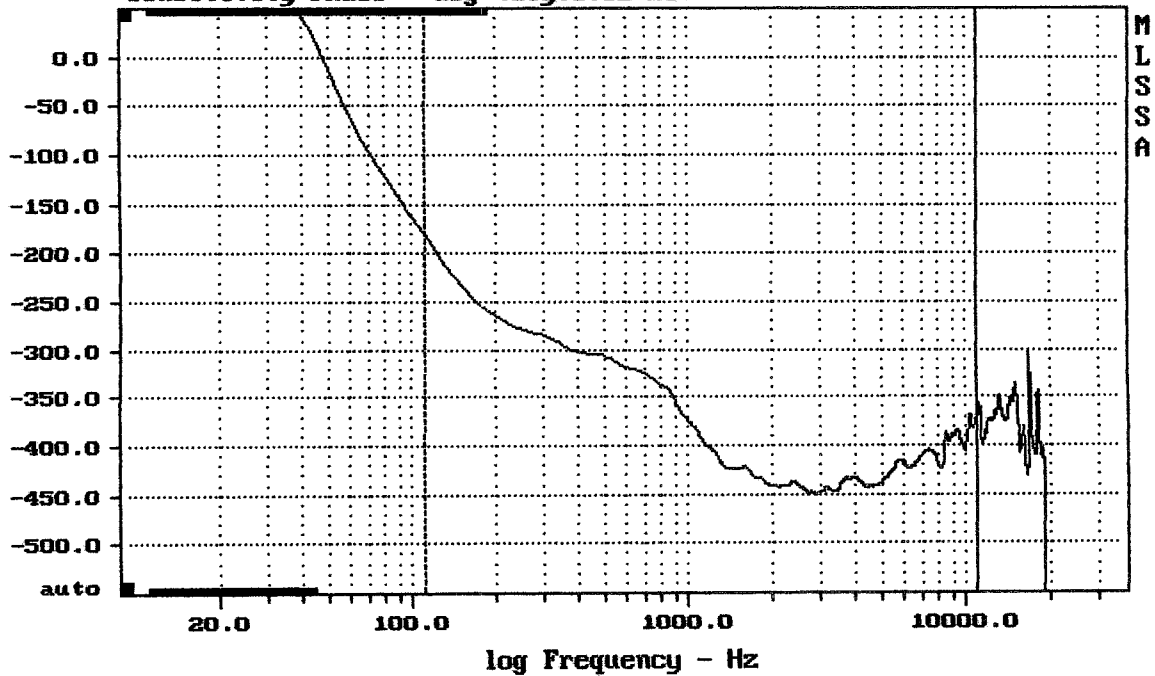


mean: 0.0005265, rms: 0.003069, std: 0.003023, max: 0.008732, min: -0.006479

ART745-A

MLSSA: Time Domain

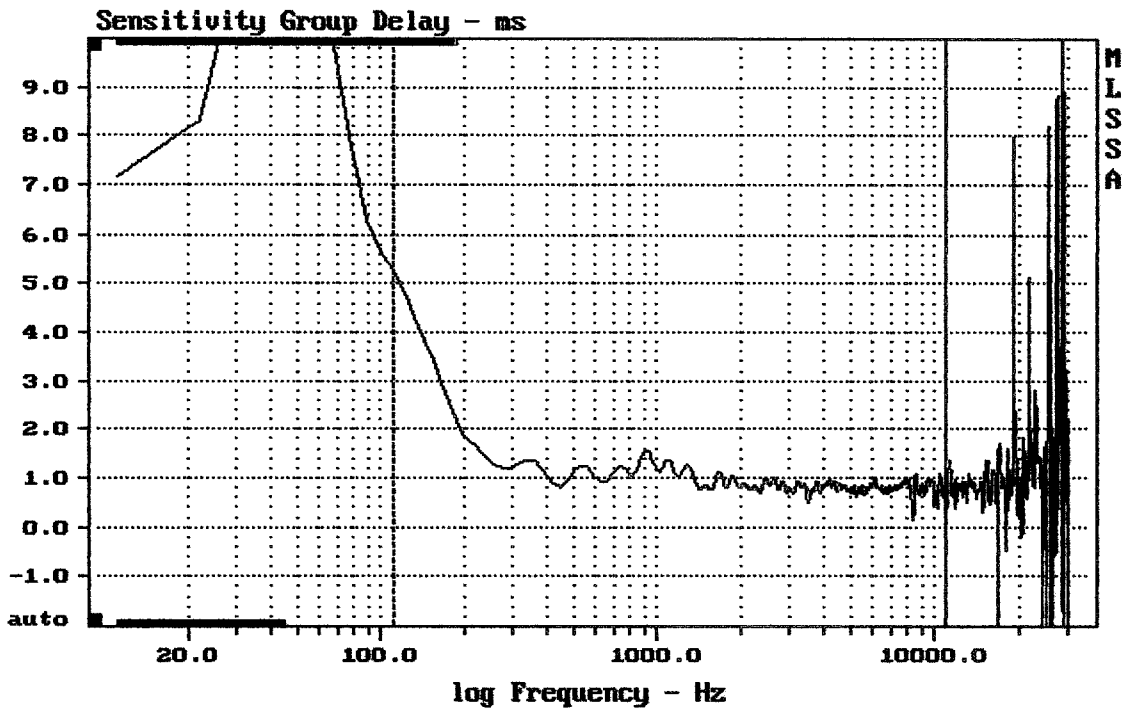
Sensitivity Phase - deg (dly:0.82 ms)



mean: -408.1, rms: 409.9, std: 38, max: -100.2, min: -450.5

ART745-A

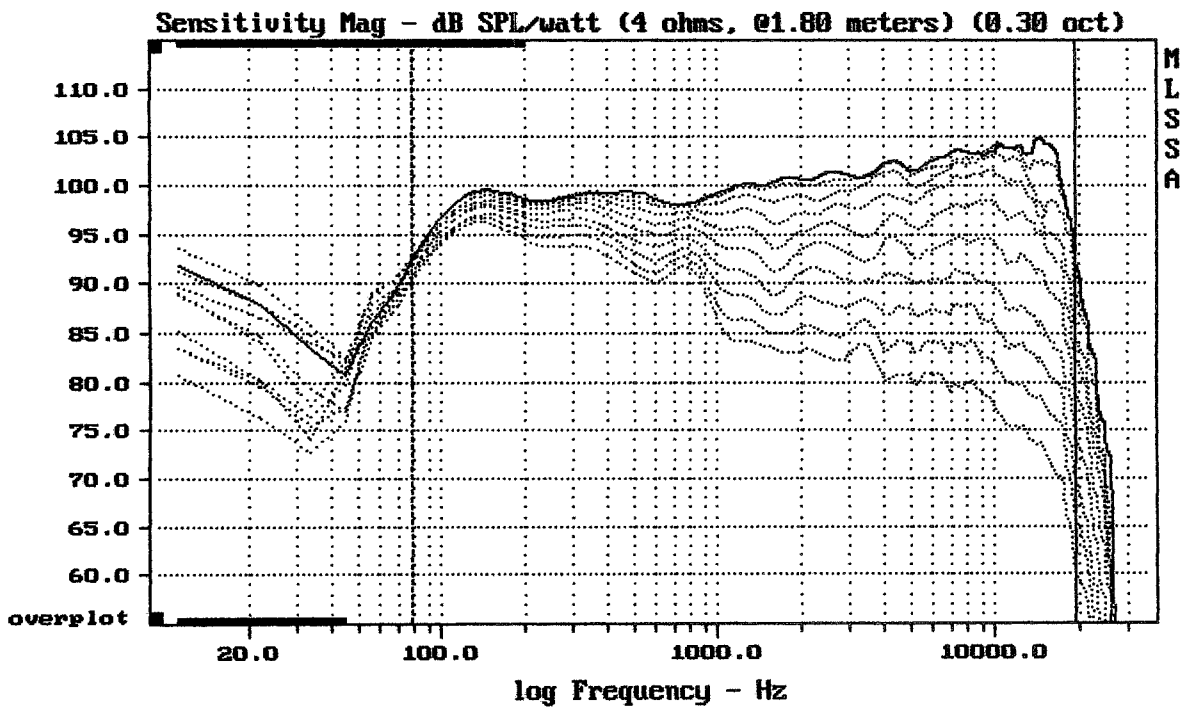
MLSSA: Frequency Domain



mean: 0.8693, rms: 0.9291, std: 0.3279, max: 5.276, min: 0.1297

ART745-A

MLSSA: Frequency Domain

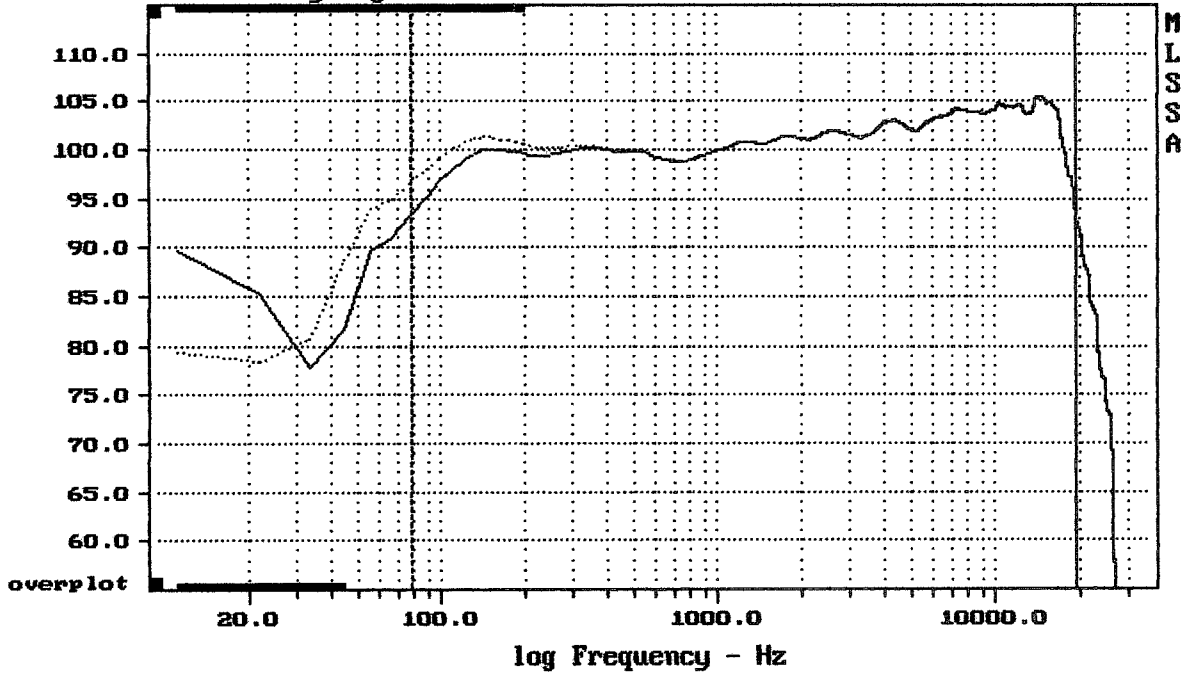


Overlay Compare: dev= +23/-8.2, std= 6.5, avg= -25

ART745-A

MLSSA: Frequency Domain

Sensitivity Mag - dB SPL/watt (4 ohms, @1.80 meters) (0.30 oct)

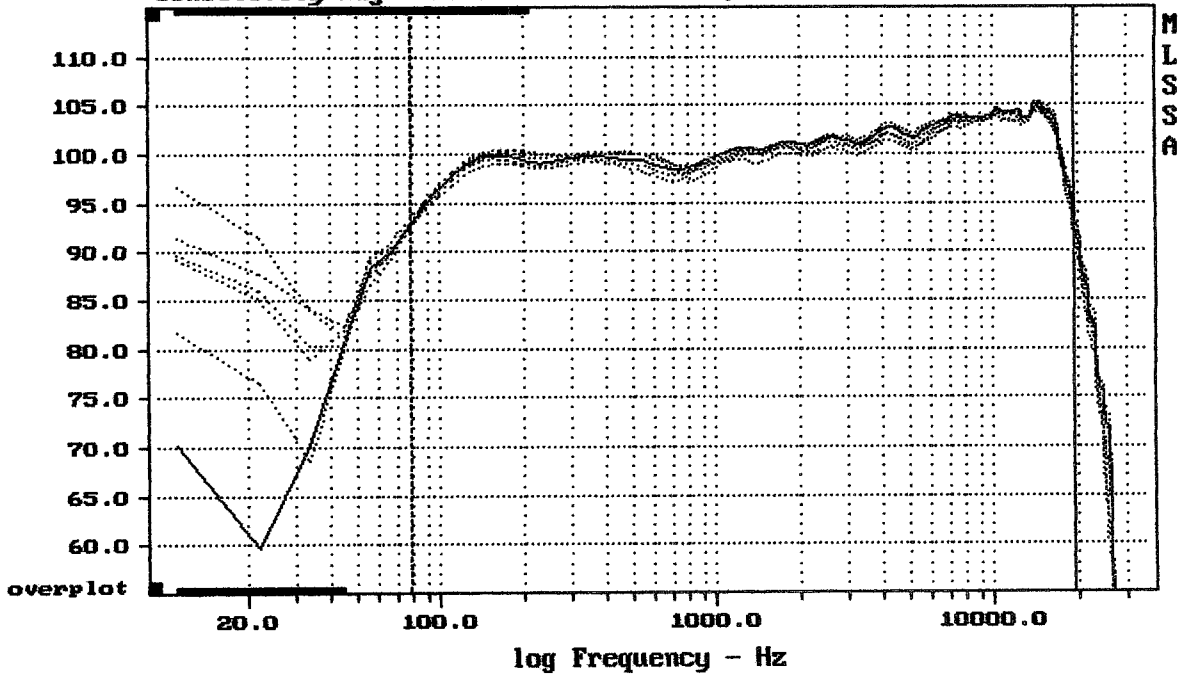


Overlay Compare: dev= +3.4/-0.087, std= 0.18, avg= -0.045

ART745-A

MLSSA: Frequency Domain

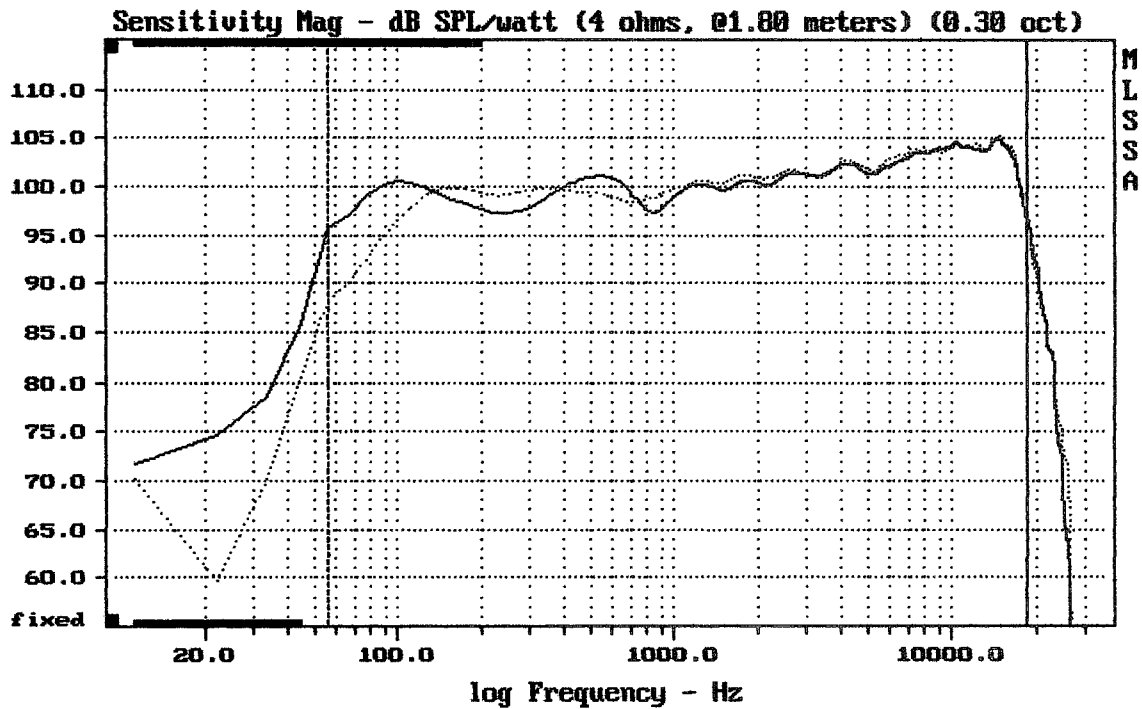
Sensitivity Mag - dB SPL/watt (4 ohms, @1.80 meters) (0.30 oct)



mean: 102.80, rms: 102.23, std: 1.81, max: 104.47, min: 92.78

ART745-A

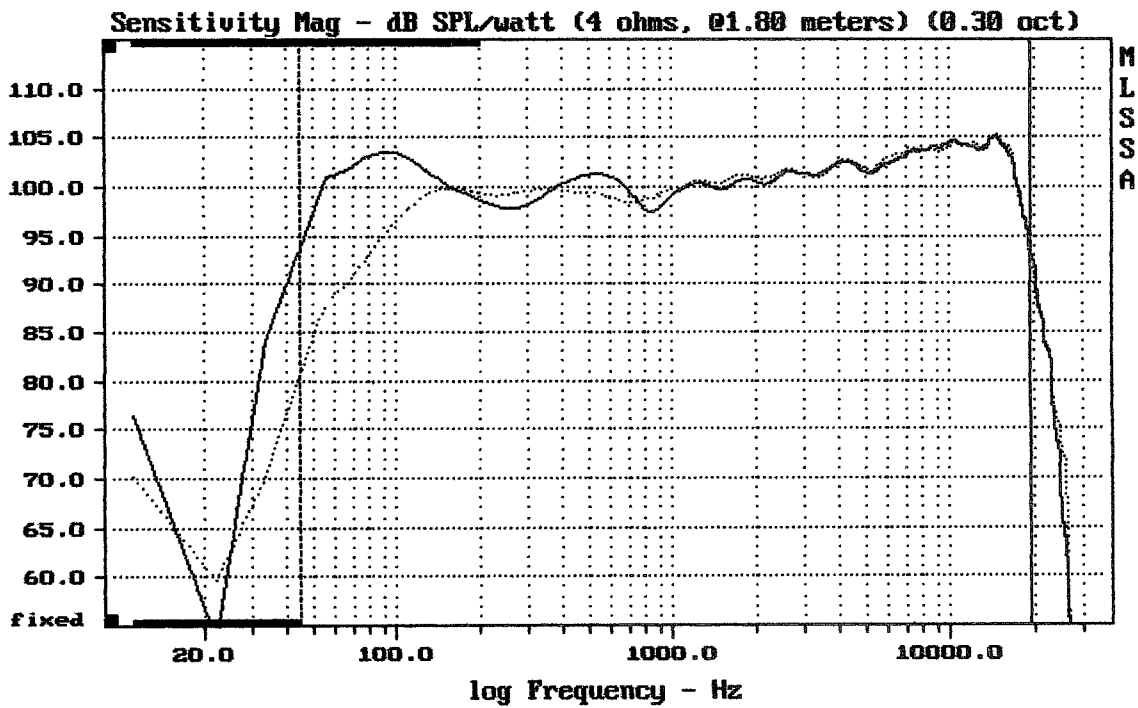
MLSSA: Frequency Domain



Overlay Compare: dev= +7.6/-1.8, std= 0.55, avg= -0.18

ART745-A

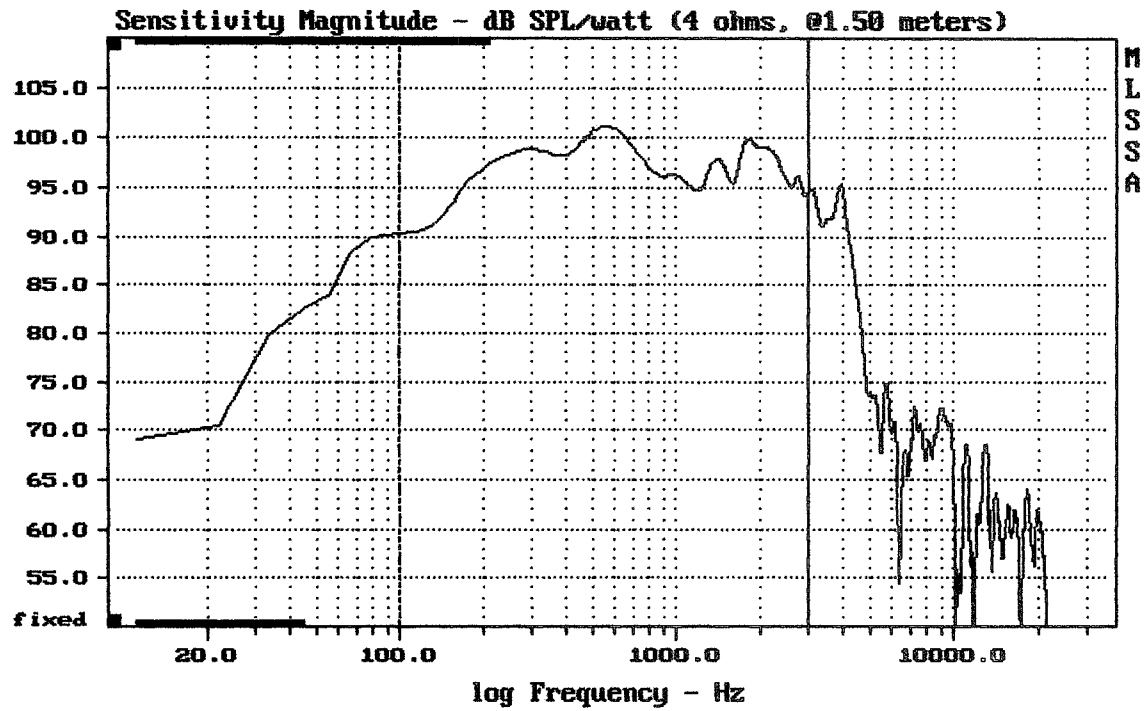
MLSSA: Frequency Domain



CURSOR: dy = -0.752487 x = 19589.0548 (1758)

ART745-A

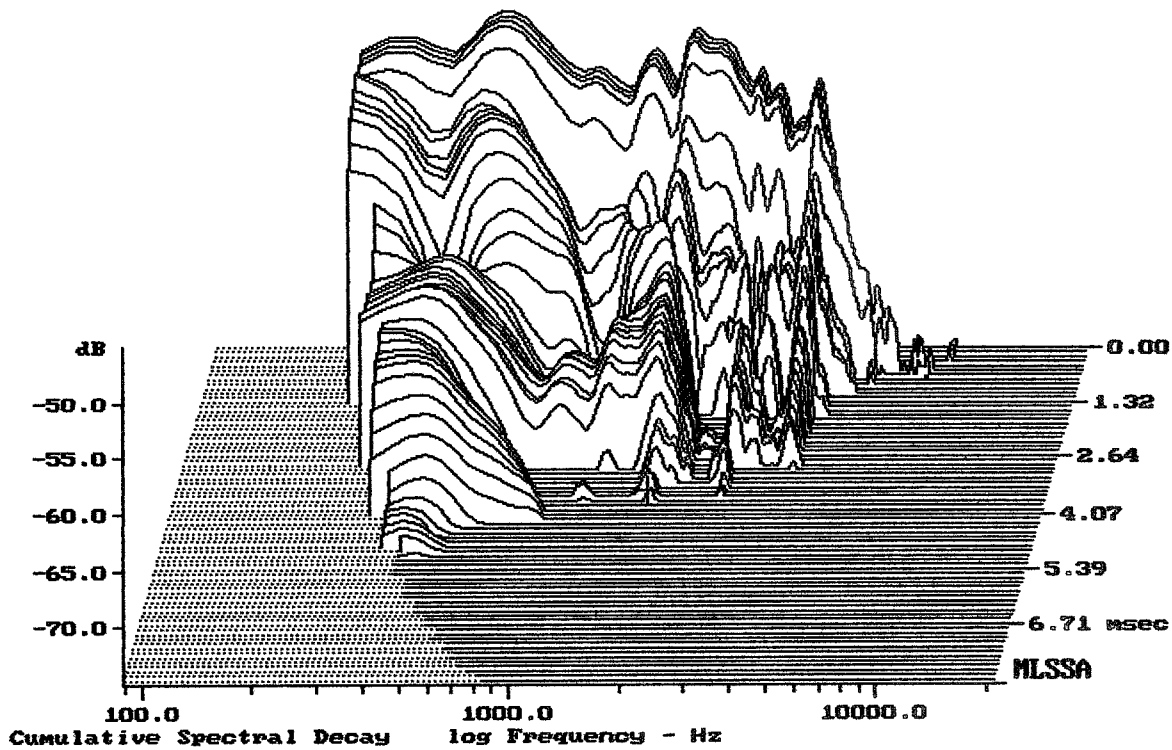
MLSSA: Frequency Domain



Level (100:2996 Hz) = 97.61 dB SPL/watt (4 ohms, @1.50 meters)

ART745-A

MLSSA: Frequency Domain



-74.03 dB, 1731 Hz (39), 3.740 msec (35)

DT10

Measured Data

QC Limits

Line	Parameter	Value	Units
1	RMSE-free	0.28	Ohms
2	Fs	48.47	Hz
3	Re	3.05	Ohms[dc]
4	Res	69.57	Ohms
5	Qms	5.31	
6	Qes	0.23	
7	Qts	0.22	
8	L1	0.67	mH
9	L2	1.17	mH
10	R2	4.04	Ohms
11	RMSE-load	0.29	Ohms
12	Vas(Sd)	126.33	liters
13	Mms	87.69	grams
14	Cms	123	$\mu\text{M}/\text{Newton}$
15	B1	18.70	Tesla-M
16	SPLref(Sd)	99.7	dB[Re]
17	Rub-index	0.01	

Method: Mass-loaded (80.00 grams)

Area (Sd): 855.30 sq cm

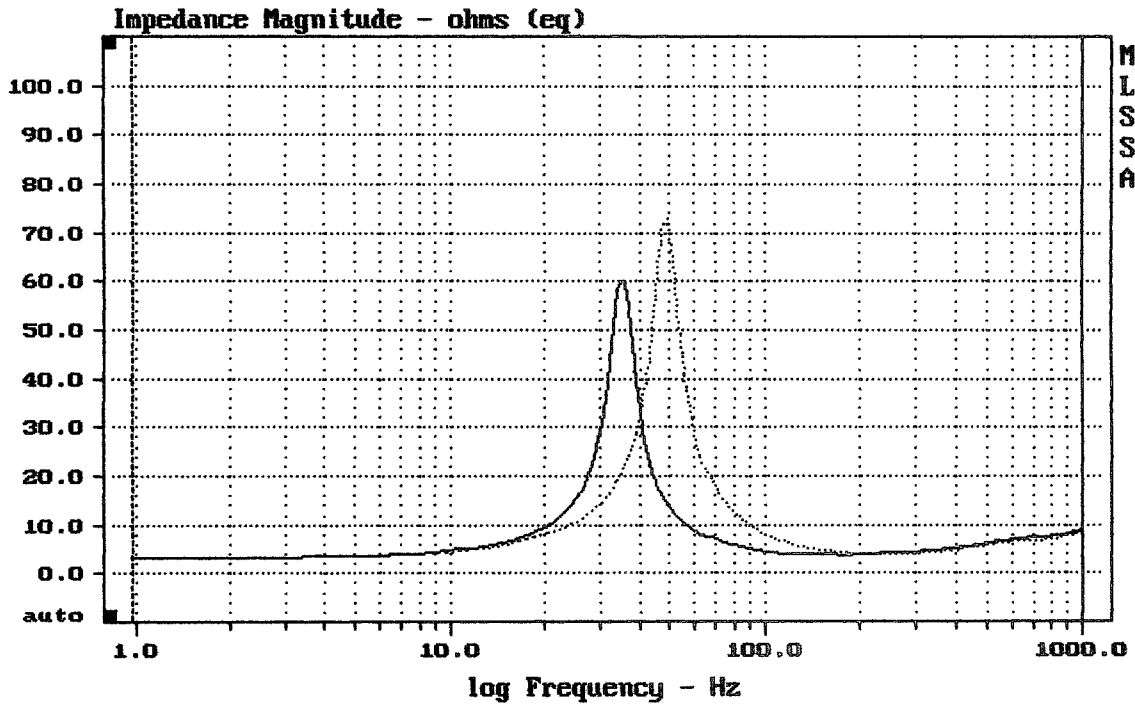
DCR mode: Measure (-0.11 ohms)

QC file: CLOSED

Analysis successful. Shift in Fs = -27.3% (-20% to -50% is recommended).

ART745-A

MLSSA: Parameters



mean: 7.481, rms: 10.28, std: 7.051, max: 73.01, min: 3.193

MLSSA: Frequency Domain