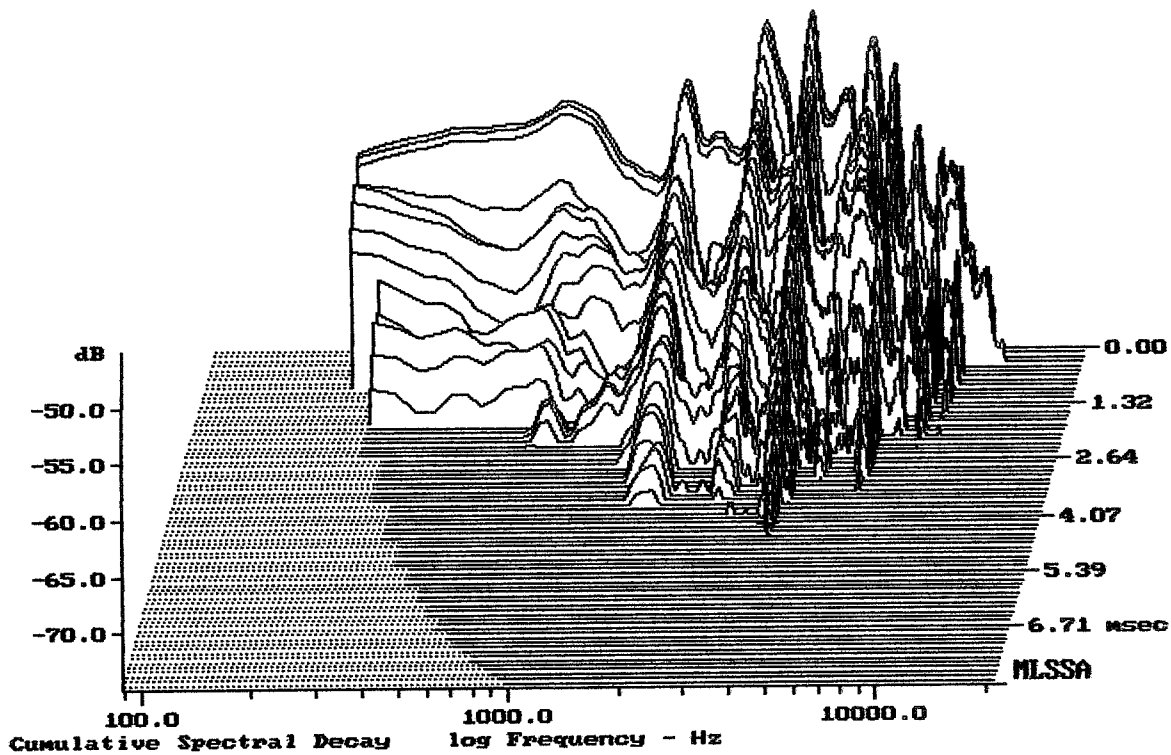


Level (180:6603 Hz) = 92.15 dB SPL/watt (8 ohms, @1.00 meters)

EMINENCE BASSLITE CA2010

MLSSA: Frequency Domain



-74.31 dB, 3986 Hz (88), 4.400 msec (41)

DTTO

Measured Data

QC Limits

Line	Parameter	Value	Units
1	RMSE-free	0.20	Ohms
2	Fs	57.14	Hz
3	Re	5.45	Ohms[dc]
4	Res	52.50	Ohms
5	Qms	6.88	
6	Qes	0.71	
7	Qts	0.65	
8	L1	0.58	mH
9	L2	0.56	mH
10	R2	2.52	Ohms
11	RMSE-load	0.19	Ohms
12	Vas(Sd)	32.98	liters
13	Mms	39.64	grams
14	Cms	196	$\mu\text{M}/\text{Newton}$
15	B1	10.42	Tesla-M
16	SPLref(Sd)	91.2	dB[Re]
17	Rub-index	0.00	

Method: Mass-loaded (40.00 grams)

Area (Sd): 346.36 sq cm

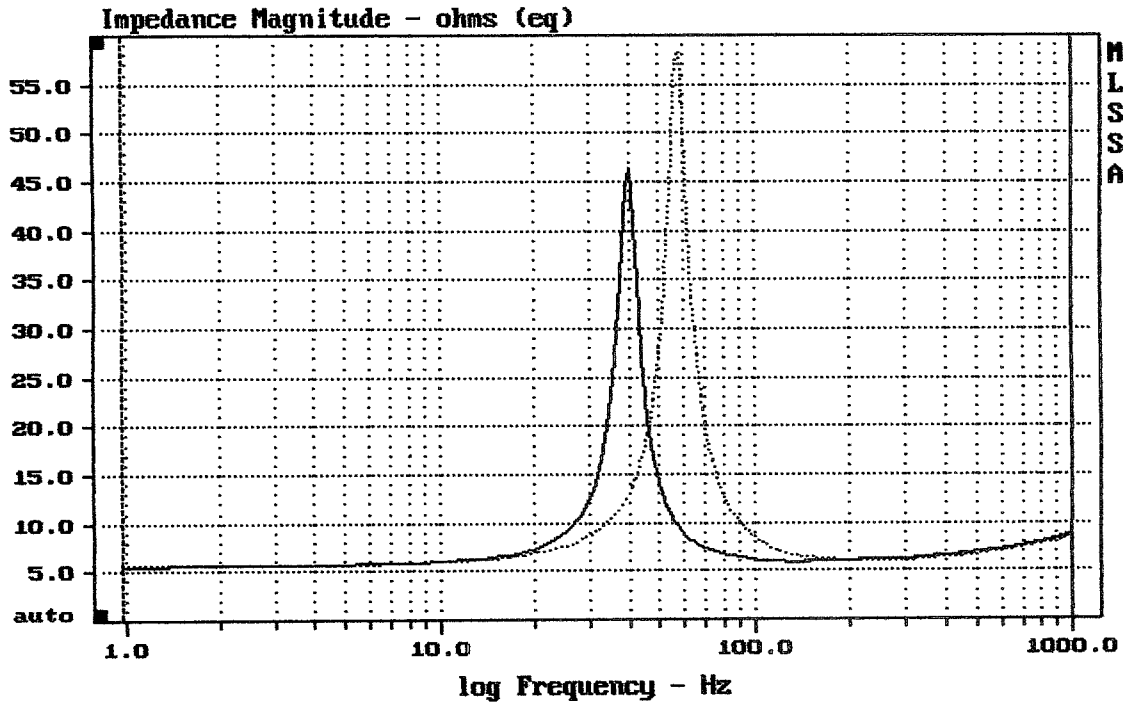
DCR mode: Measure (-0.11 ohms)

QC file: CLOSED

Analysis successful. Shift in Fs = -30.3% (-20% to -50% is recommended).

EMINENCE BASSLITE CA2010

MLSSA: Parameters



mean: 7.996, rms: 9.443, std: 5.023, max: 58.24, min: 5.565

MLSSA: Frequency Domain