

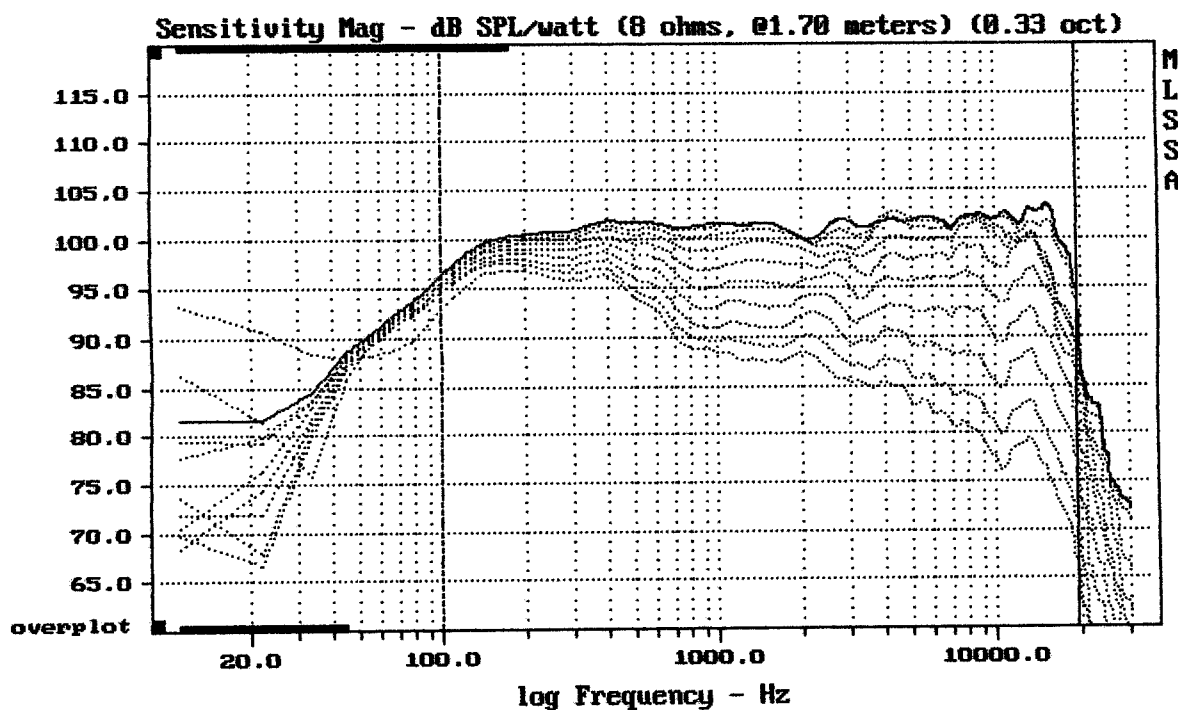

---

Level (122:18122 Hz) = 101.64 dB SPL/watt (8 ohms, @1.70 meters)

---

NDM124 + DSP

MLSSA: Frequency Domain

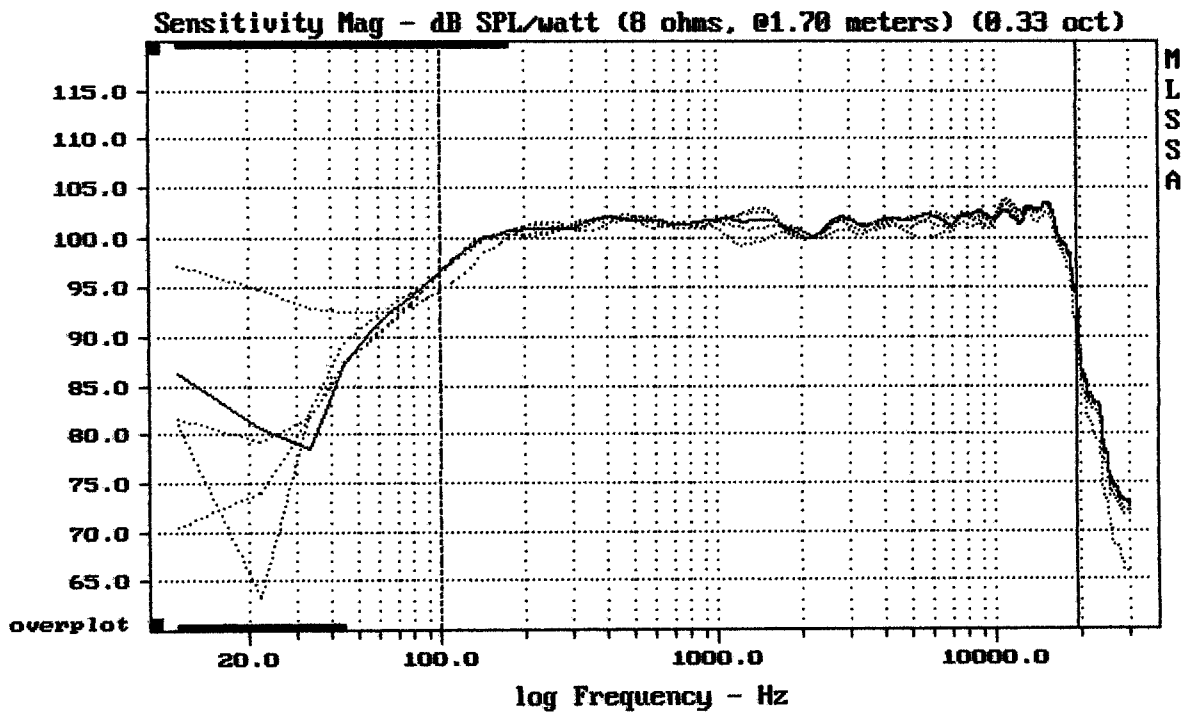



---

Overlay Compare: dev= +18/-6.5, std= 5.5, avg= -22

---

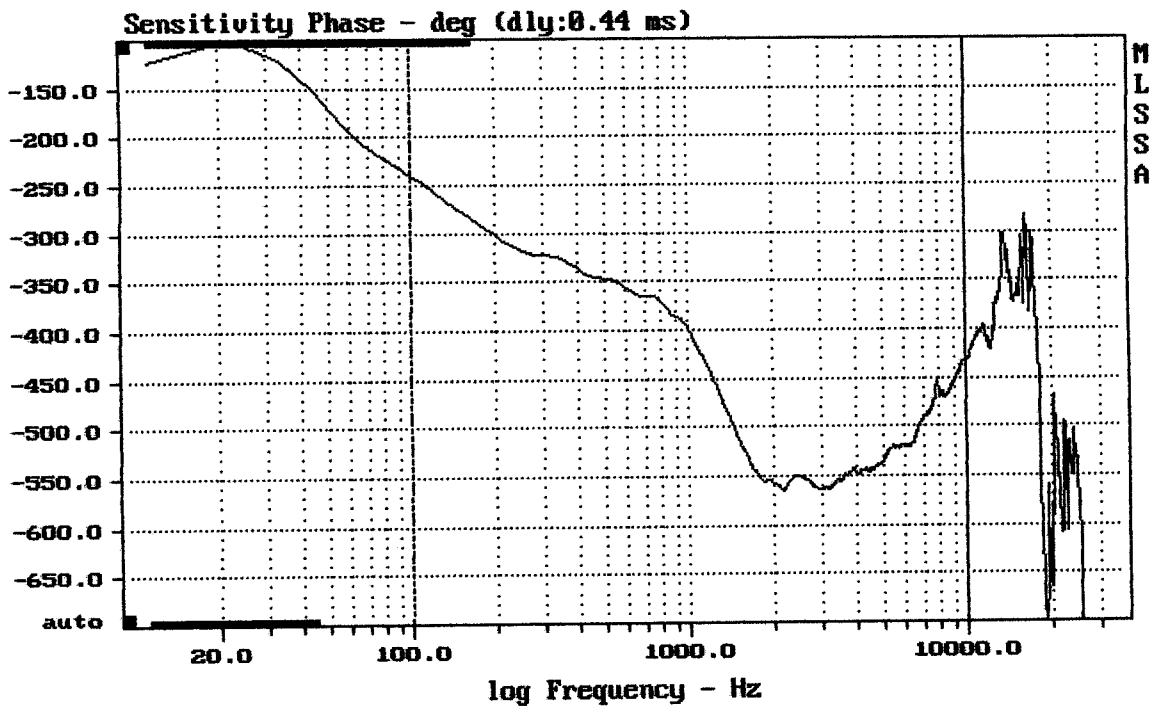
MLSSA: Frequency Domain



Overlay Compare: dev= +2.2/-2.2, std= 0.96, avg= -0.79

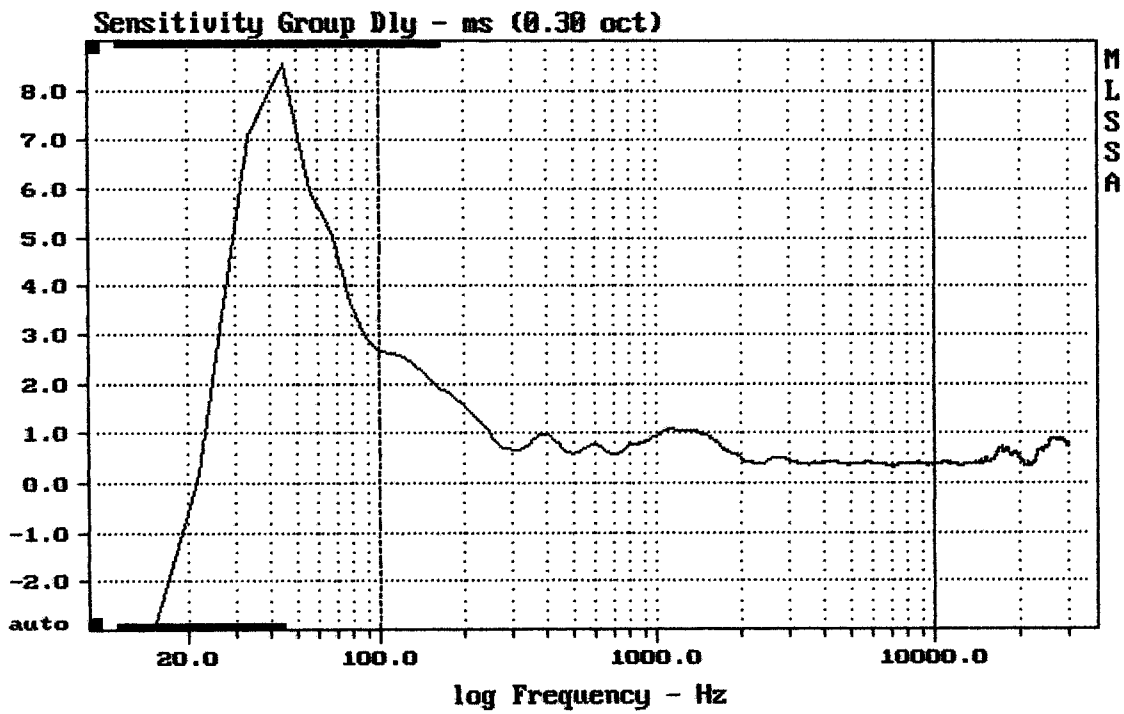
NDM124 + DSP

MLSSA: Frequency Domain



mean: -493, rms: 497, std: 62.91, max: -239.3, min: -565

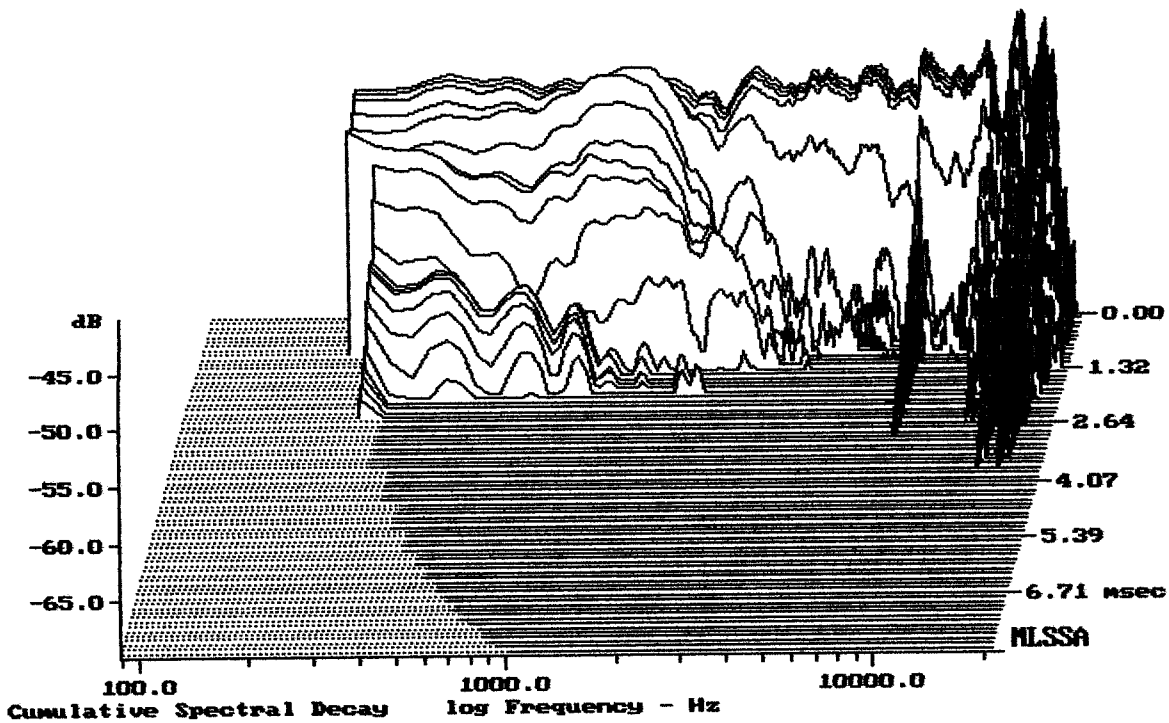
MLSSA: Frequency Domain



mean: 0.4969, rms: 0.5614, std: 0.2614, max: 2.657, min: 0.3221

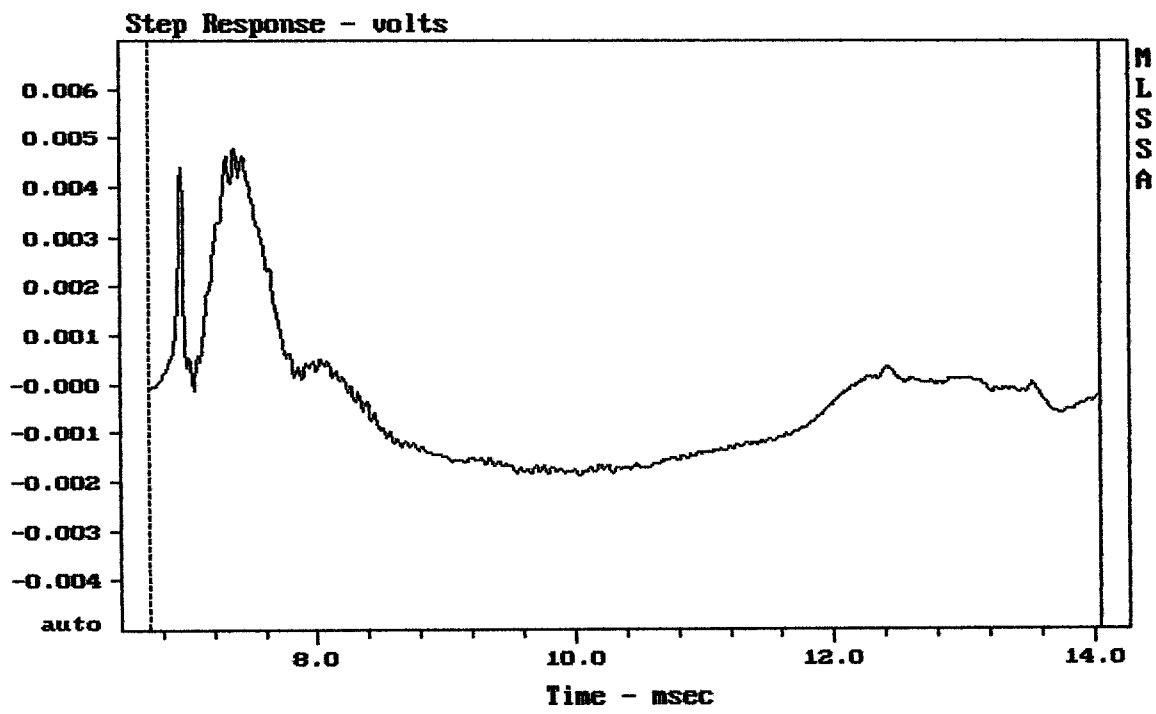
NDM124 + DSP

MLSSA: Frequency Domain



-68.58 dB, 7812 Hz (176), 2.530 msec (24)

DTTO



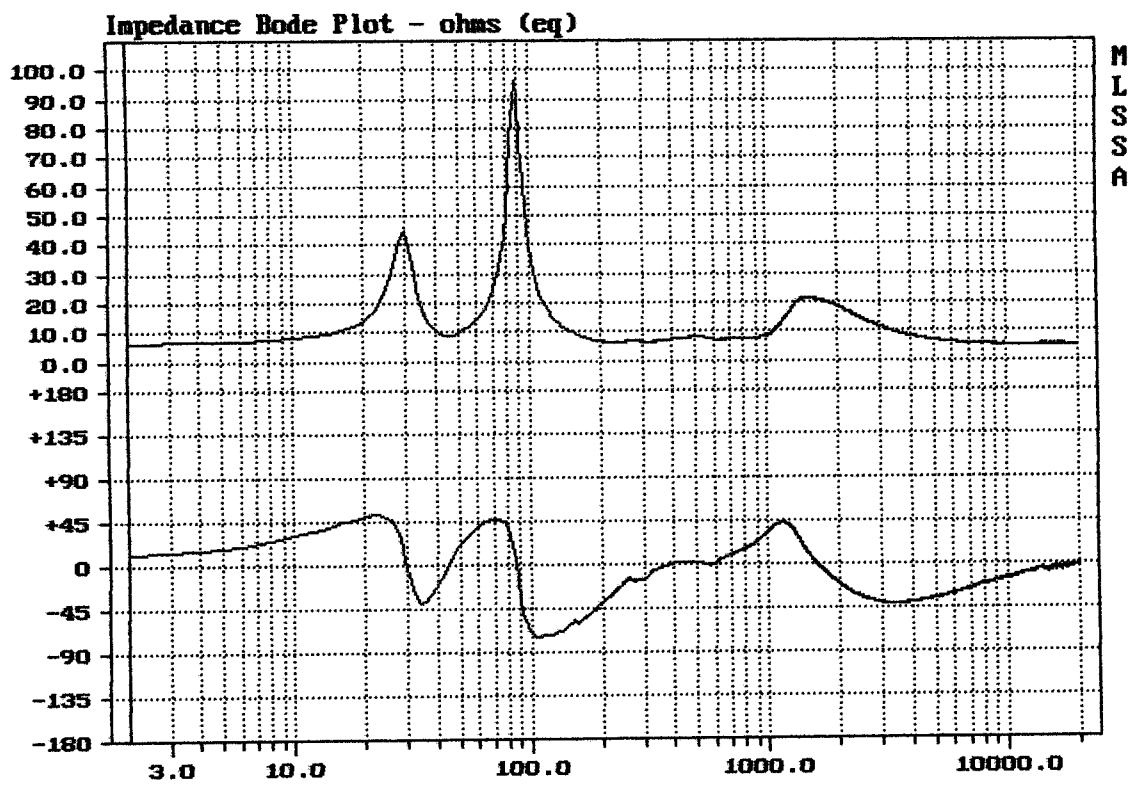
---

CURSOR: y = -0.000263375 x = 14.0470 (1277)

---

NDM124 + DSP

MLSSA: Time Domain



mag= 6.54, phase= 12.4 deg, 2.001 Hz (1)

DTTO

NDM124 + DSP